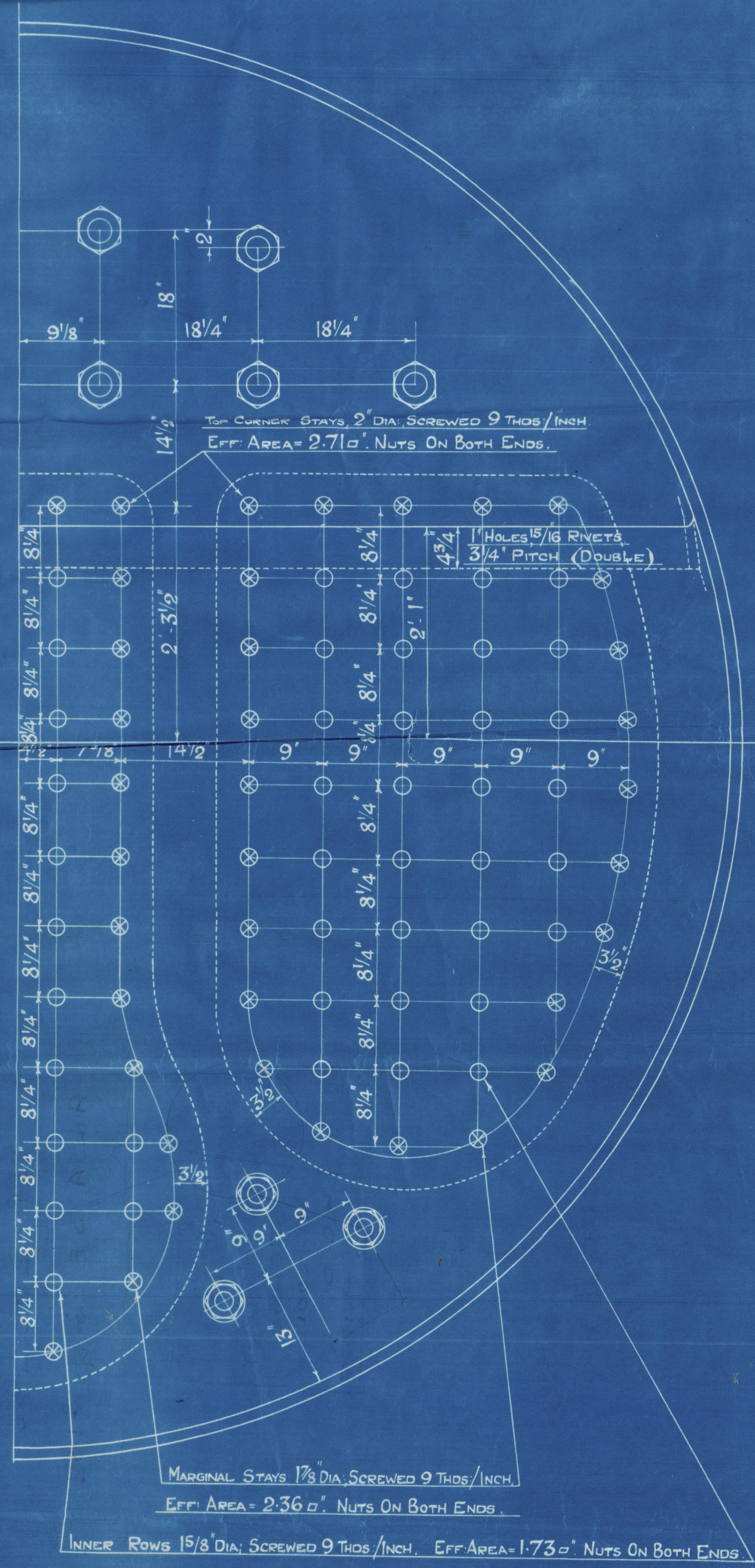
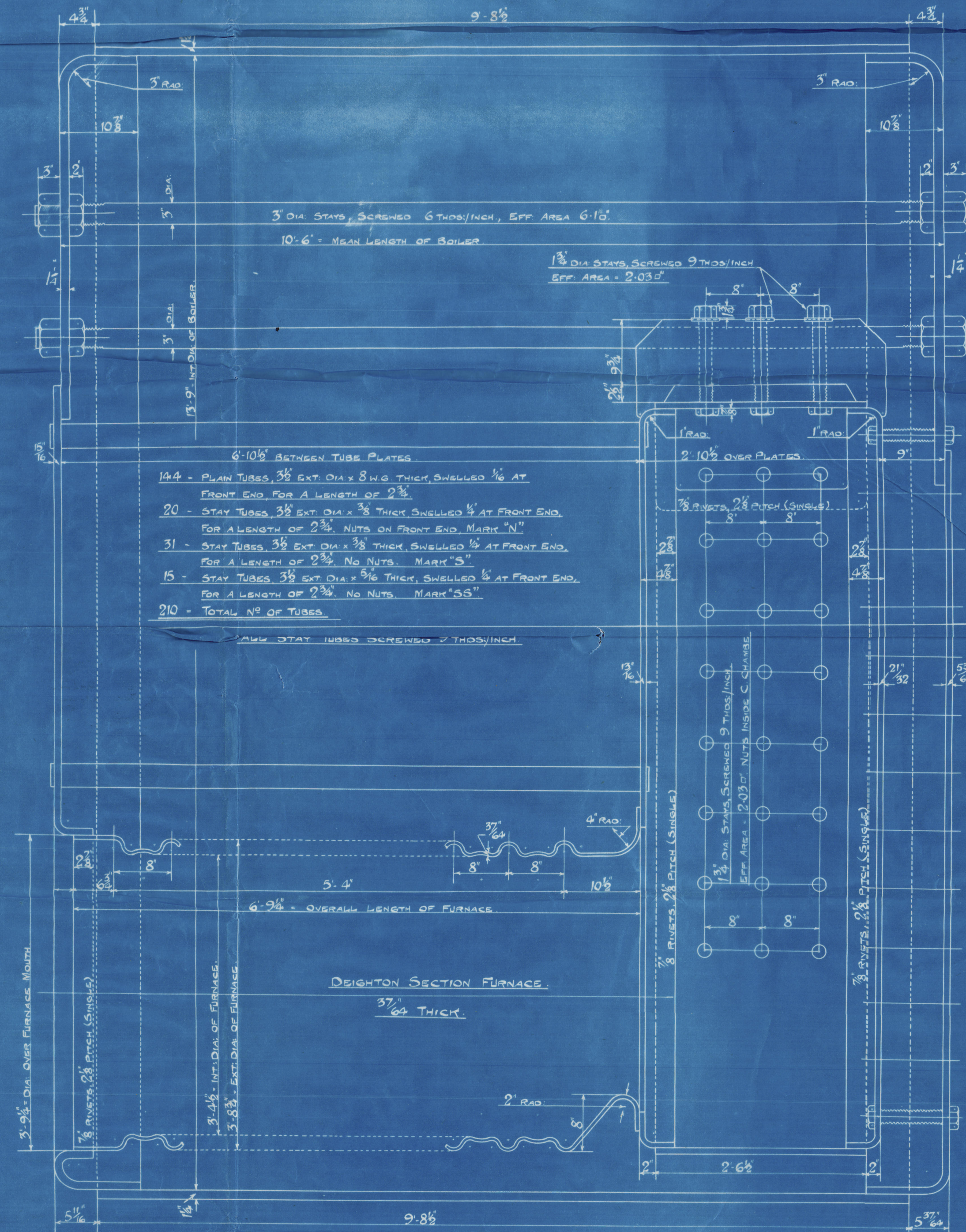
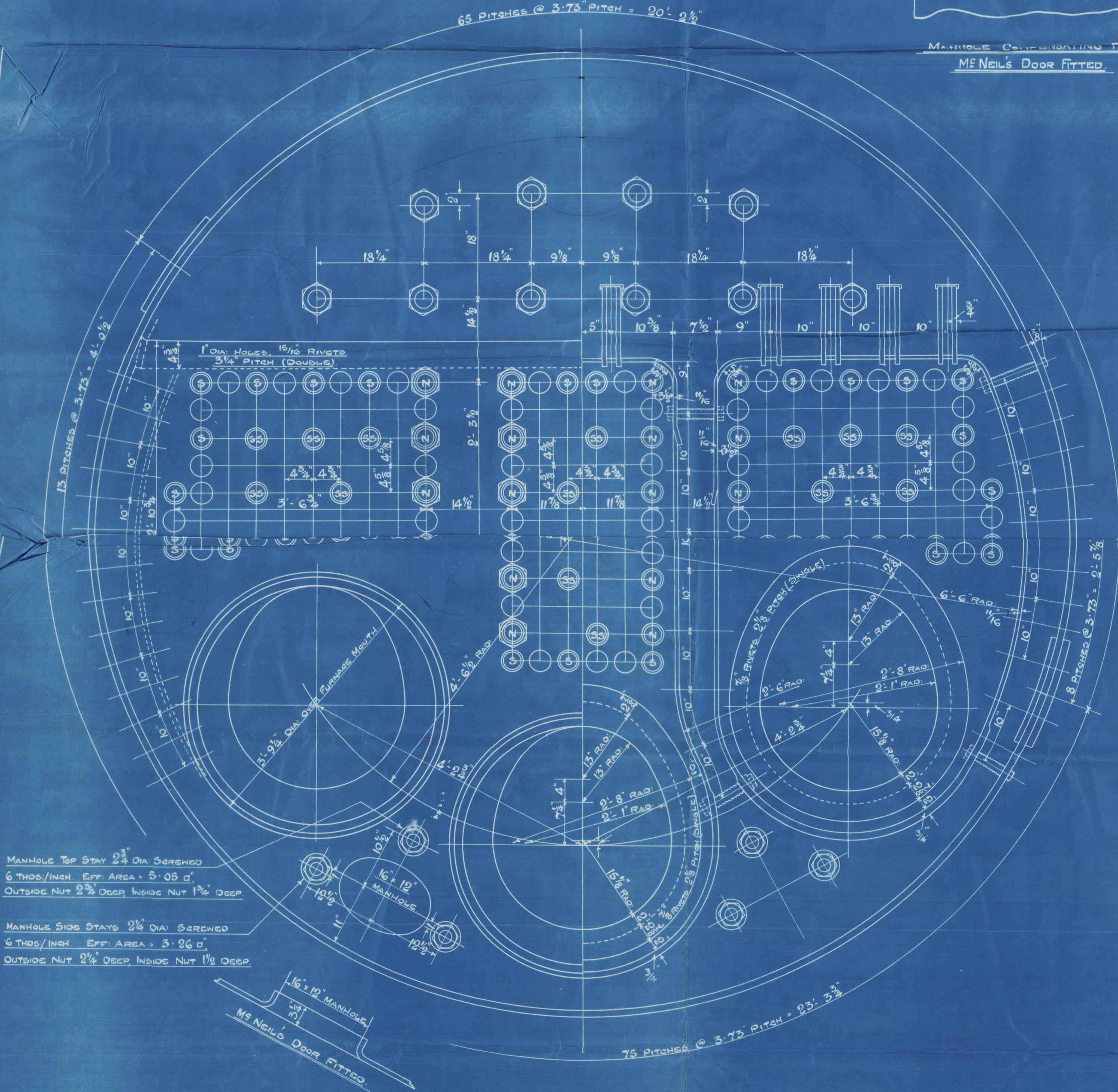
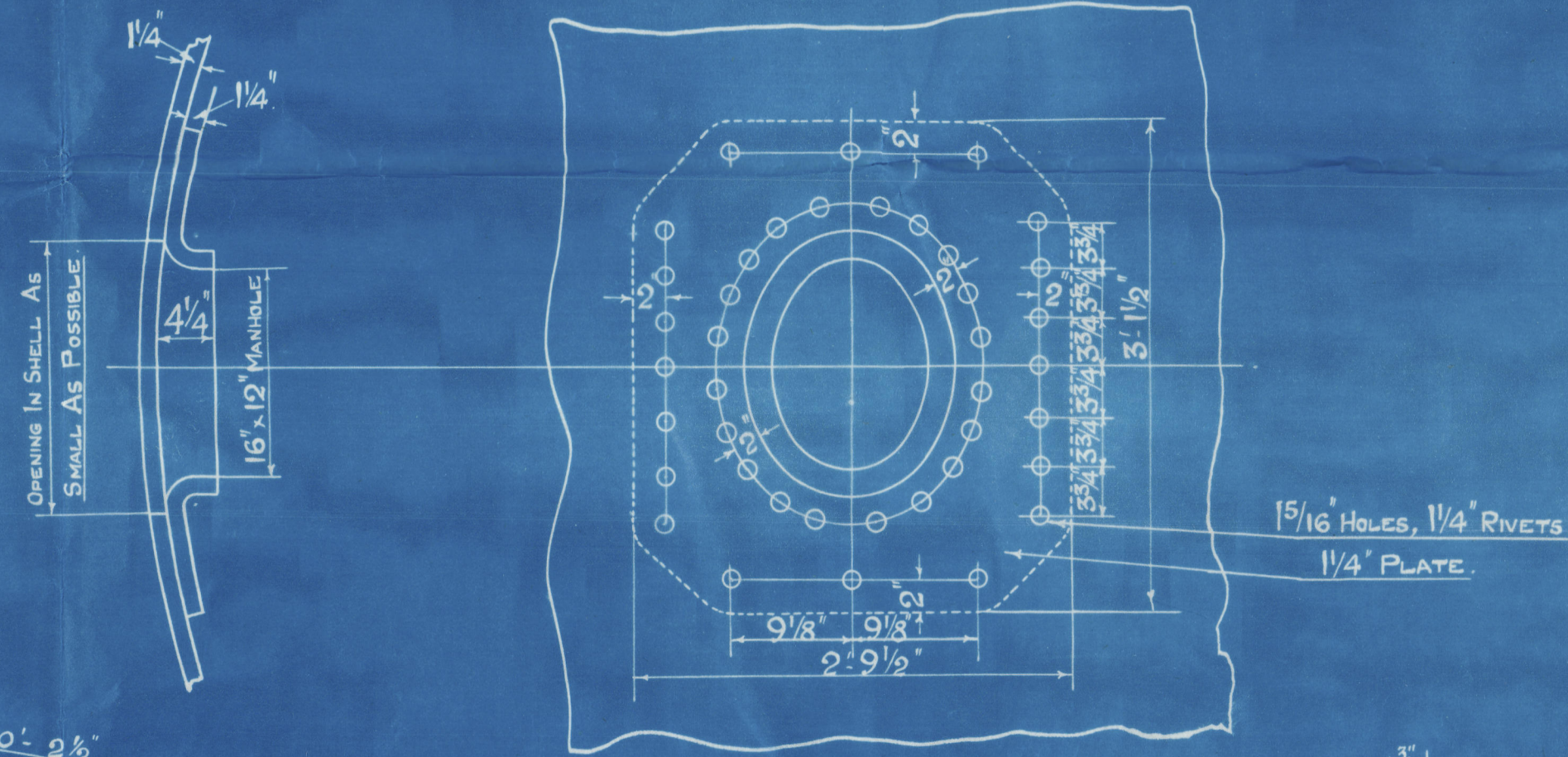


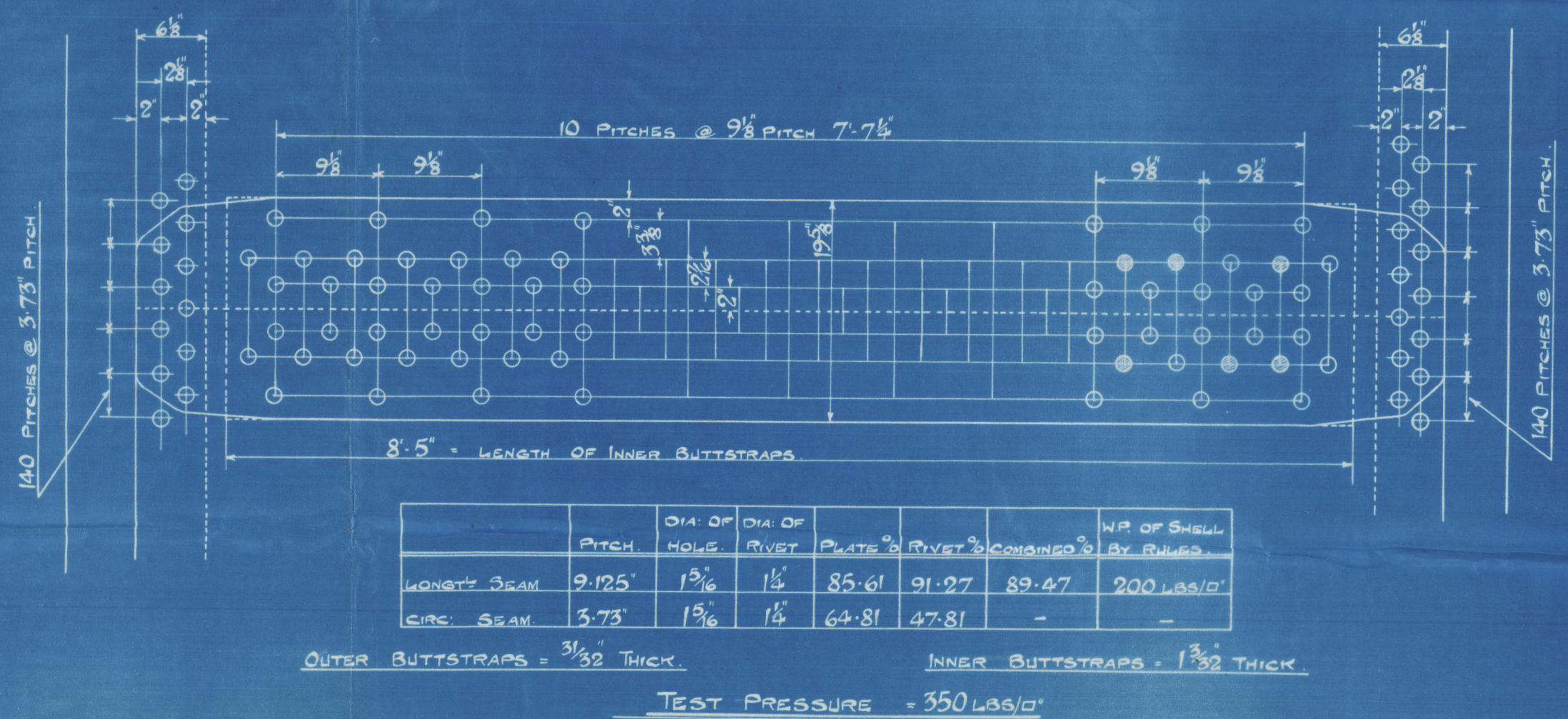
25/8/25



	1- BOILER	2- BOILER
HEATING SURFACE OF TUBES	1322 SQ. FT.	
FURNACES	134	
C.C. TOP & SIDES	137	
C.C. BACKS	66	
C.C. TUBEPLATES	48	
TOTAL HEATING SURFACE	1702 SQ. FT.	3404 SQ. FT.
GRATE AREA (5' 0" GABE)	51 SQ. FT.	102 SQ. FT.
RATIO H.P./G.A.	35.2	

	TENSILE STRENGTH	MATERIAL
SHIELD PLATES	28-32 TONS / Q"	
BUTTSTRAPS	28-32	
GIRDER PLATES	28-32	
MANHOLE COMP. PLATE	28-30	
ALL OTHER PLATES	26-30	
FURNACES	26-30	
LONGIT. STAY BARS	28-32	
SCREWED STAY BARS	26-30	
RIVET BARS	26-30	

TUBES OF LAPWELDED WROG' IRON



21/6/25

18-8-25

BARCLAY, LITTLE & CO. LTD.
18 AUG 1925
28 Finnieston St.
GLASGOW

BOILERS - AILSA N° 5.

13' 9" INT. DIA. X 10' 6" MEAN LENGTH, TO PASS LLOYD'S

TESTS & REQUIREMENTS FOR A WORKING PRESSURE OF 200 LBS./Q"

2-OFF REQUIRED.

SCALE :- 1" = 1 FOOT

Lloyd's Register

W 70-0195

GLASGOW

BARCLAY CURLE & Co. L^d

2 BOILERS N^o AILSA 5

WP-200 LBS

AILSA S B Co & S N^o 132

N^o 16999

LLOYD'S TEST

350 LBS

WP-200 LBS

L.C.D.

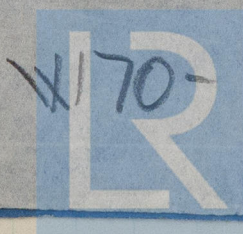
9.12.25

GLASGOW REPORT No. 45228

attach to

s/o Grebe

GLASGOW REPORT No. 45481



© 2020

0195

Lloyd's Register
Foundation