

Telephones : Central 9280 (18 Lines)  
 Telex : Central 8215  
 Telegrams : "Colvillett, Glasgow"

# COLVILLES LTD.,

195 WEST GEORGE STREET,  
 GLASGOW, C.2.

All Steel tested before leaving the Works

CODES USED  
 A.B.C. 5th & 6th Editions,  
 Bentley's Phrase, 1st.  
 2nd.  
 Lieber's 5 Letter.  
 Western Union.  
 " 5 Letter.  
 Engineering.  
 Marconi International.  
 Acme Selwyn's.  
 Universal Trade, Etc.

WORKS:  
 DALZELL STEEL WORKS, Motherwell.  
 CLYDEBRIDGE STEEL WORKS, Cambuslang.  
 GLENGARNOCK IRON & STEEL WORKS, GLENGARNOCK.  
 CALDERBANK STEEL WORKS, Calderbank.  
 CLYDE IRON WORKS, Tollcross, Glasgow, E.2.

K.

PRIORITY  
 GRADE 6

Boiler Steel Plates Branded



Ship Steel Sections Branded

COLVILLES



DALZELL STEEL

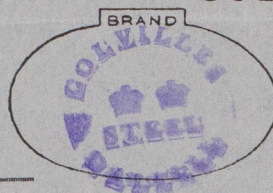
BRITISH-STEEL

LONDON OFFICE:  
 6 Spring Gardens.  
 Cockspur Street, S.W.1.

12th October, 1939

SOLD TO Messrs. Cochran & Co., Annan, Ltd., ANNAN.

PRIORITY  
 GRADE 6



WAGON No: \_\_\_\_\_ Carriage: \_\_\_\_\_

Tests: LLOYDS

W.O. 1088

To: Newbie Siding, ANNAN.

DATE AND No. OF ORDER	MARKS	NO. OFF	DIMENSIONS	TONS CWT. Q. LBS.	TONS CWT. Q. LBS.	TONS CWT. Q. LBS.	TONS CWT. Q. LBS.	RATE	£	S.	D.
15.9.39 8670/PB 267	8670/ 1444	1	STEEL BOILER PLATE. 4'10.1/2 Dia. 3/4	5 1 12	2008 ✓	26/30 ✓	44 ✓	6240	3 1 ✓	1	



D.L.



© 2020

Lloyd's Register  
 Foundation



Lloyd's Register  
Foundation