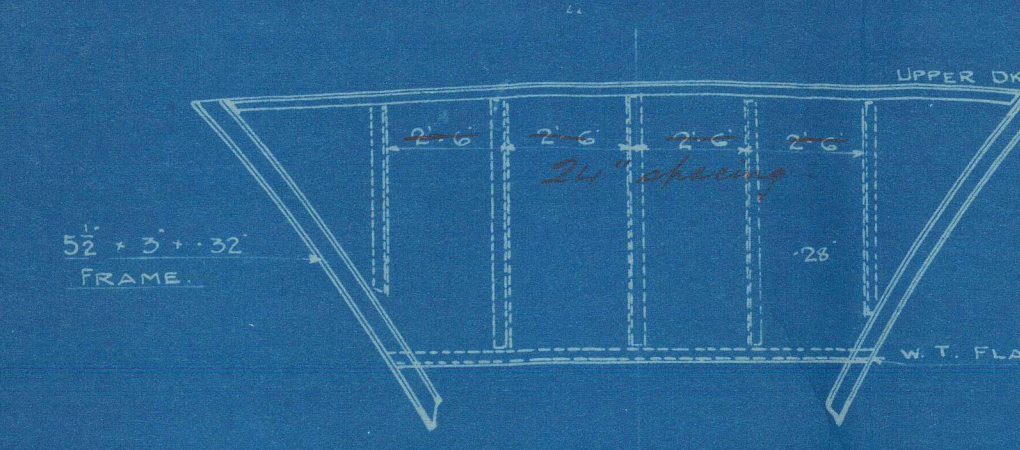
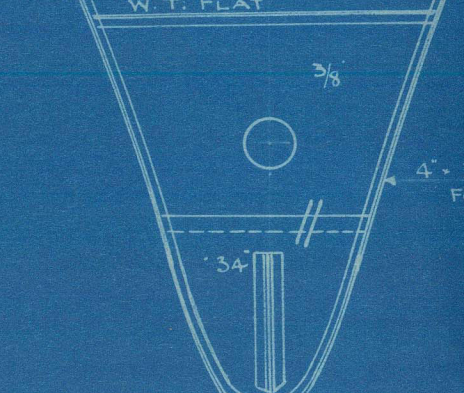


15/9/19

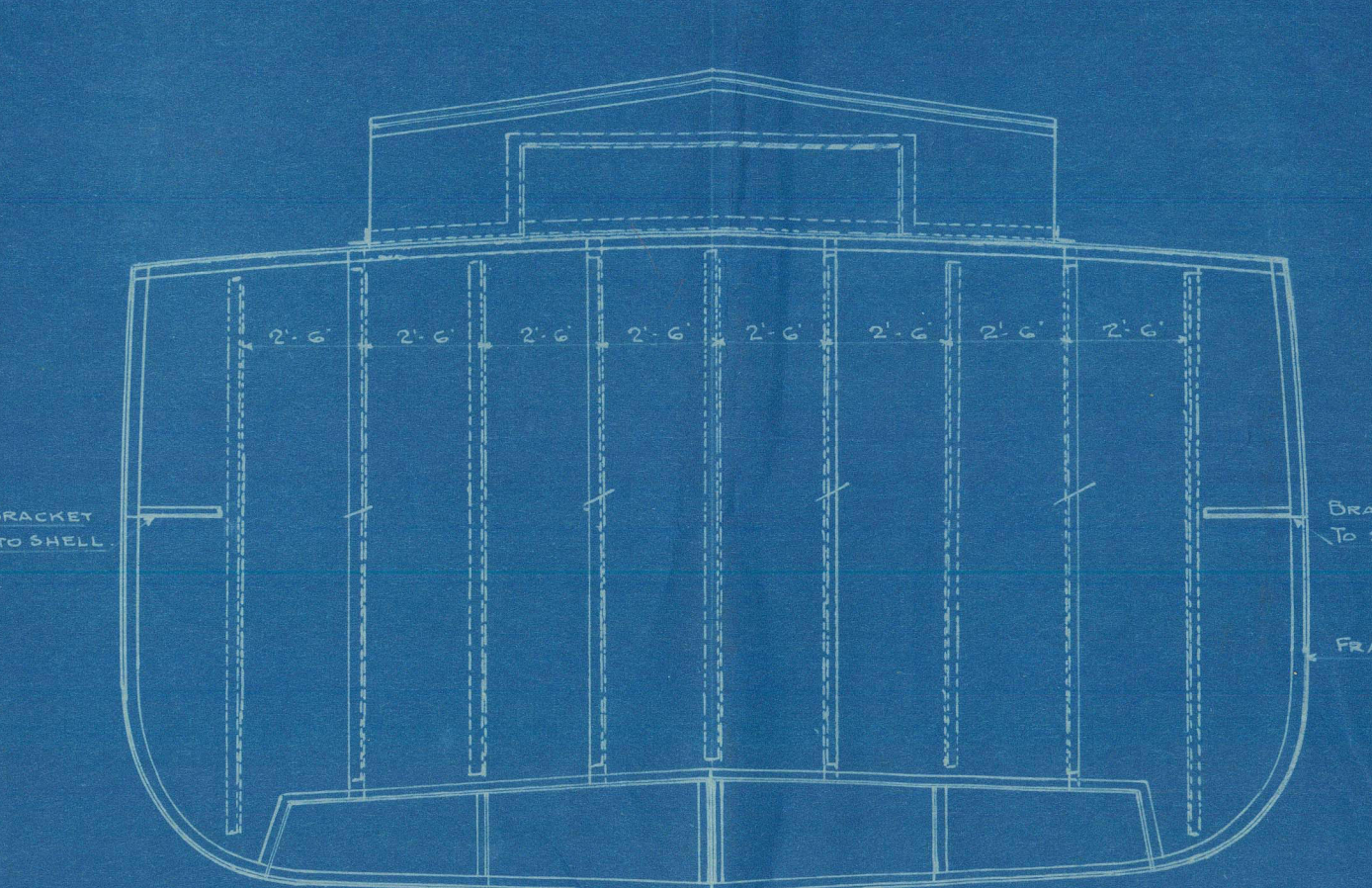
W.T. BULKHEAD FRAMING
LOOKING AFT
STIFFS 5 1/2" x 3" x 30' 8A



W.T. BULKHEAD FRAMING
LOOKING AFT
STIFFS 5 1/2" x 3" x 30' 8A



W.T. BULKHEAD FR 32
LOOKING AFT
STIFFS 5 1/2" x 3" x 40' 8A

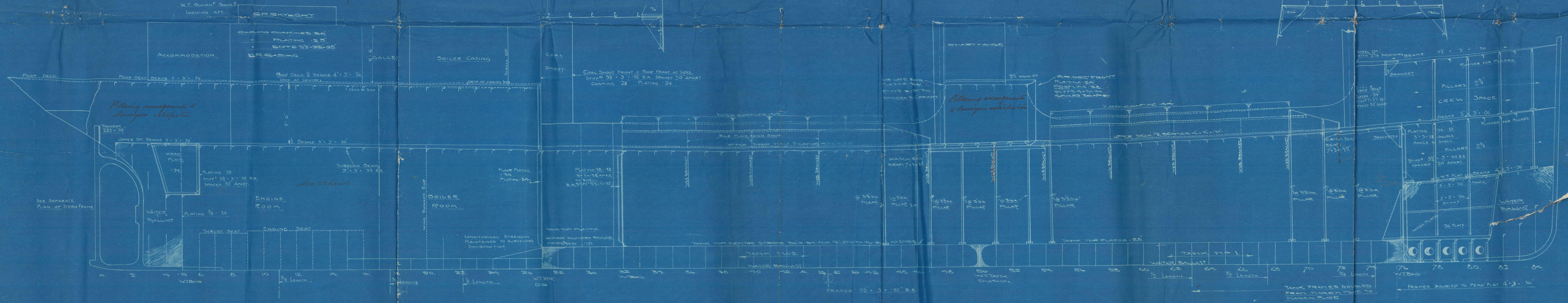
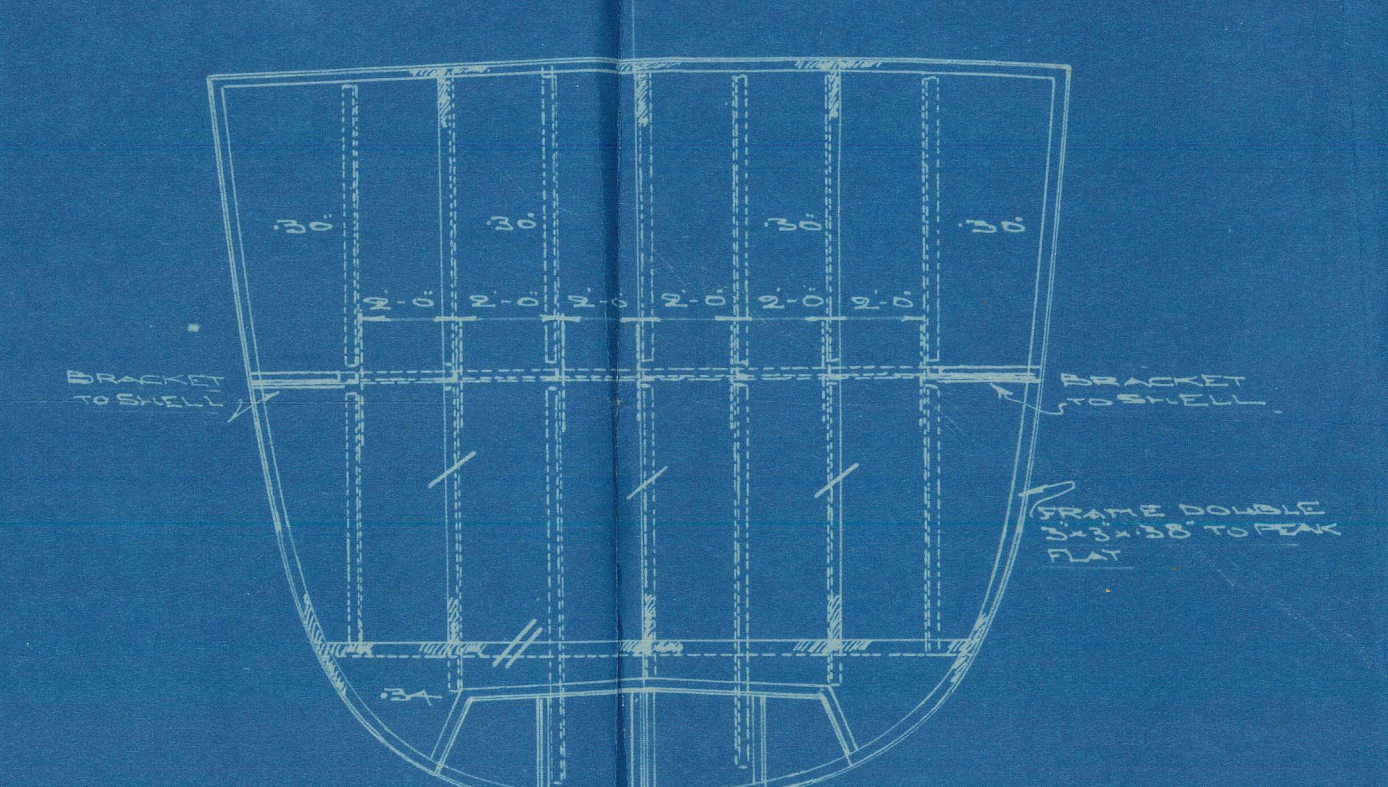


SHIP No 107 PROFILE

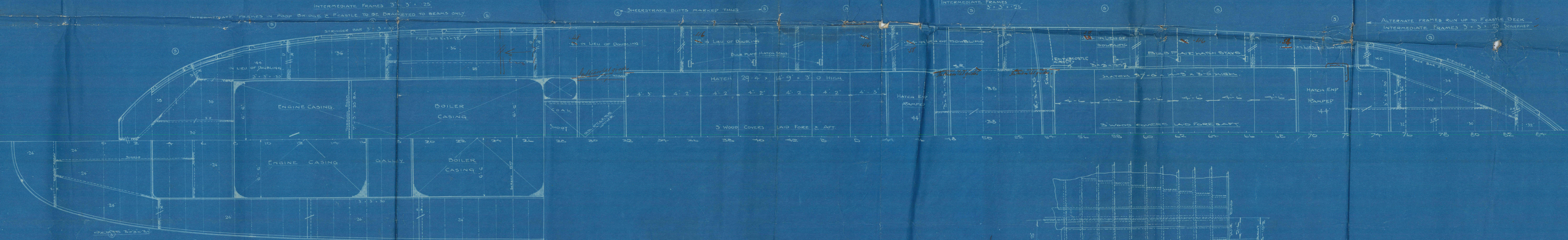
Scale 1/4" = 1 Foot.
Dimensions 164' 10" x 24' 11" x 13' 3" ME



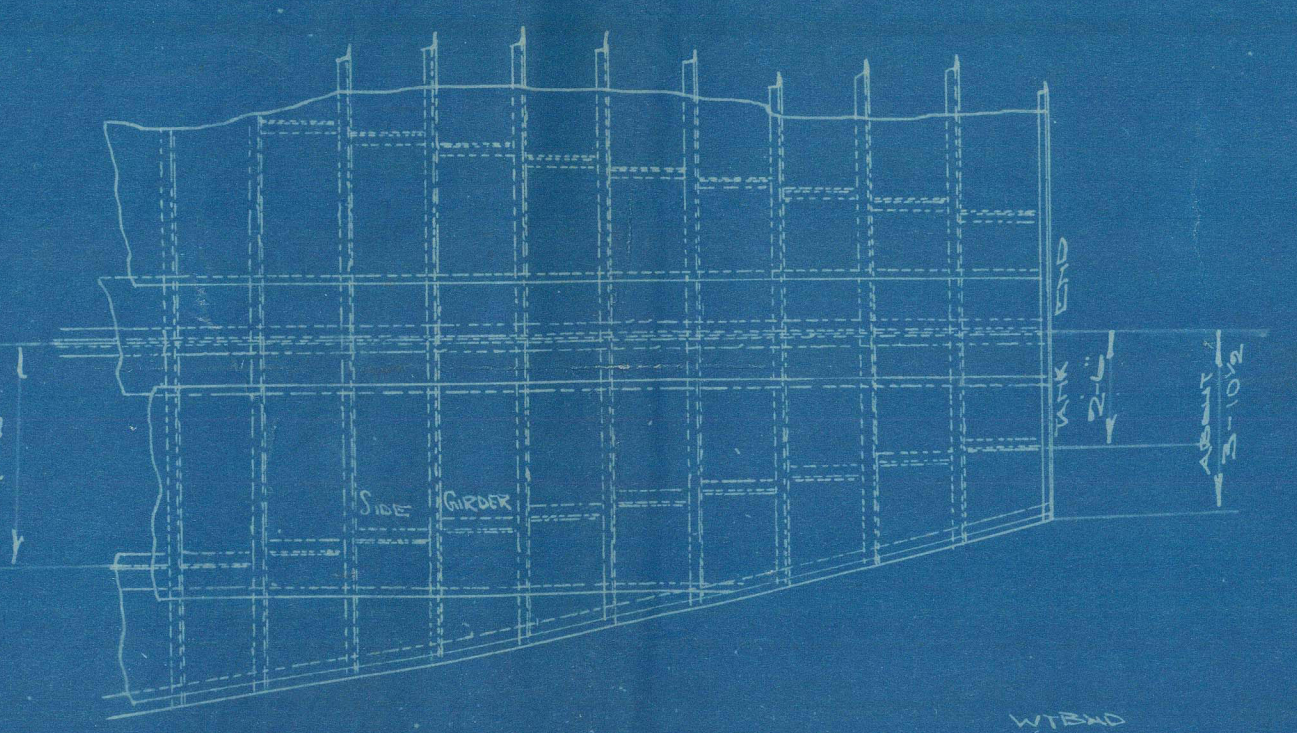
W.T. BULKHEAD No 76
LOOKING FORWARD
STIFFS 5 1/2" x 3" x 30' 8A



UPPER DECK.



POOP DECK.

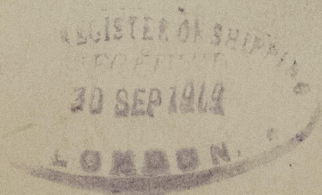


PLAN OF TANK TOP (FORE END)
SHOWING SIDE GIRDS FORWARD

COLBY BROS

Nº 107

PROFILE



MAIN



© 2021

Lloyd's Register
Foundation

W717 - 0099

S. S. "Tudal"

^{2nd} Lon. Rpt. No 84049

|||||

W 717-0099



© 2021

Lloyd's Register
Foundation