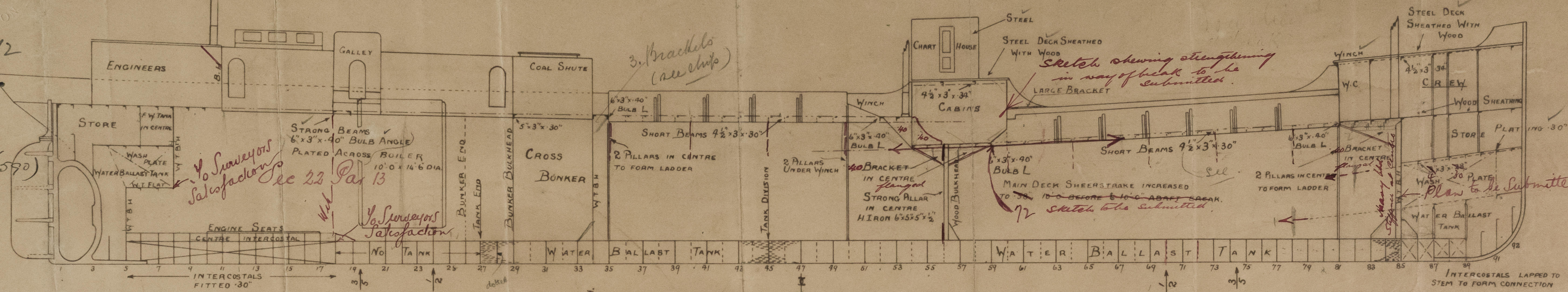


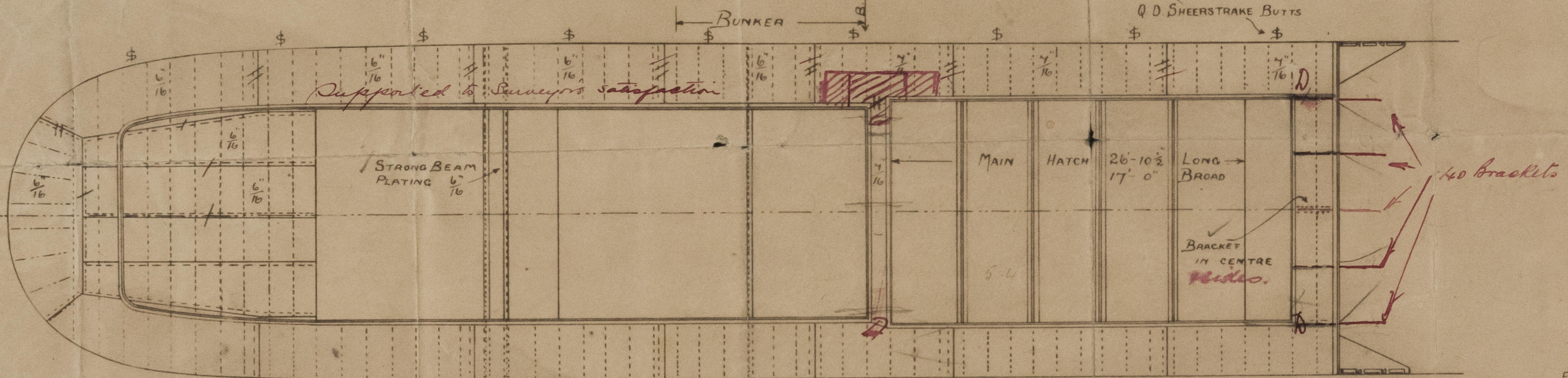
3.9.12
16.9.12
7.11.12
24.2.13
19.2.20 (590)

Keels supported to Surveyor's satisfaction

Pillaring throughout to Surveyor's satisfaction



BOTTOM FORWARD STRENGTHENED AS PER RULE & as per requirements of Circular 1235.



DECK PLATES & DECK STRINGERS IRON
— QUARTER DECK —

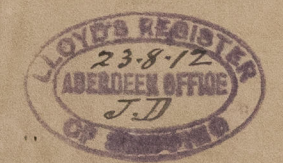


— MAIN DECK —

LLOYDS PROFILE & DECK PLAN
— No 487 —
— SCALE 1/8" = 1 FOOT —

ALEX HALL & Co, Ltd.
SHIPBUILDERS, ENGINEERS & BOILERMAKERS,
ABERDEEN.

C.B.
3.9.12.



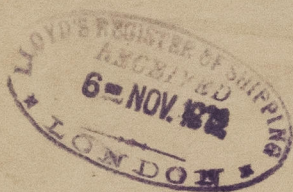
W737-0082

A. Hall & boy. L^a

No. 487.

- Profile & Deck Plan-
S.S. "Bairnside"

Abn. Rpt. No. 11213.



RETAIN

A Hall & boy Ld

No. 590.

S.S. "Bairnside"

Abn. FE. Rpt. No. 12809.

W737-0082

Foundation