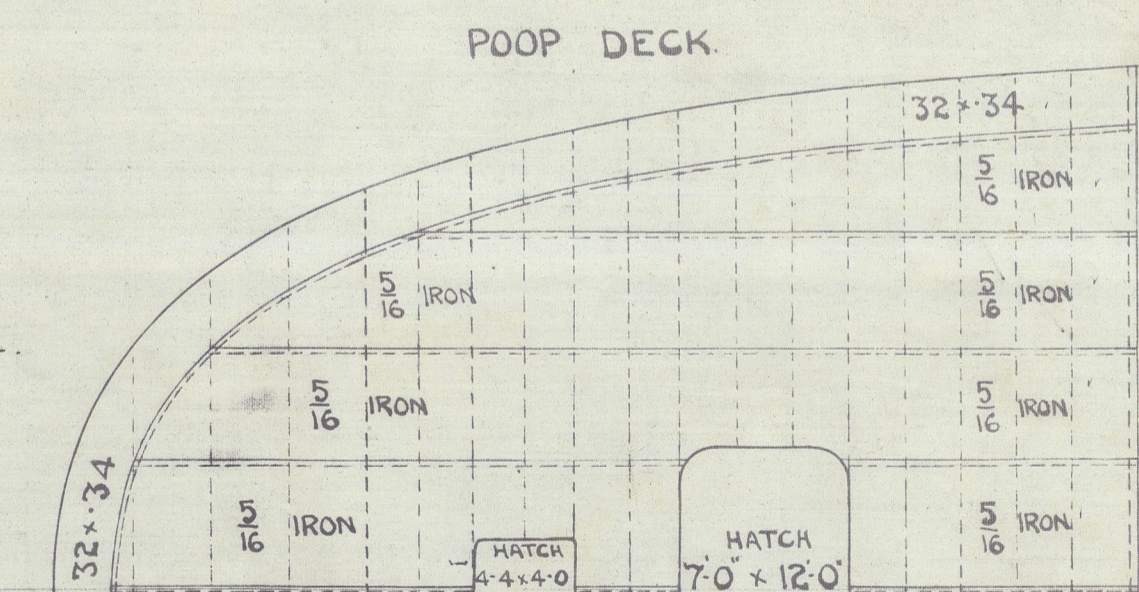
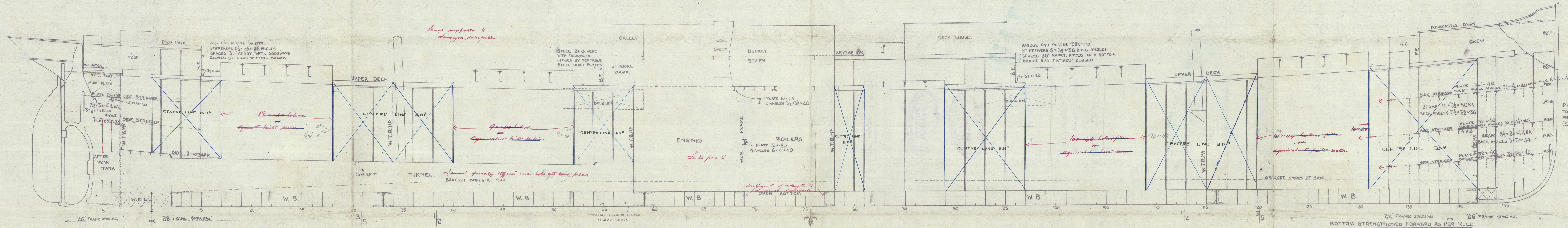
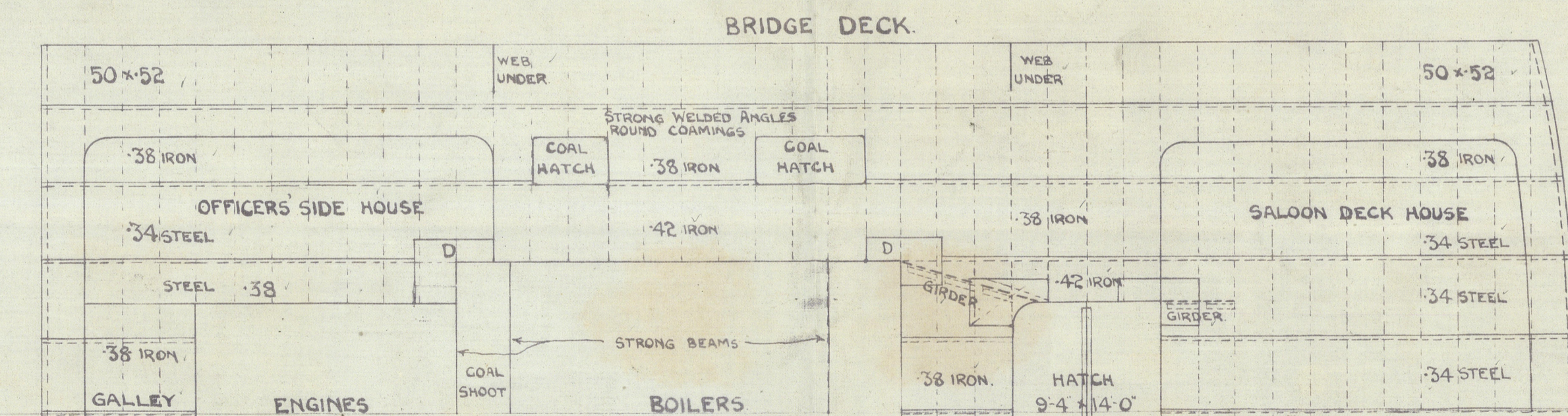


# PROFILE AND DECK PLANS N<sup>o</sup> 449.

DIMENSIONS AS PER RULE  
 LENGTH 347.00'  
 BREADTH 48.79'  
 DEPTH 26.70'  
 CLASS 100 A.1.

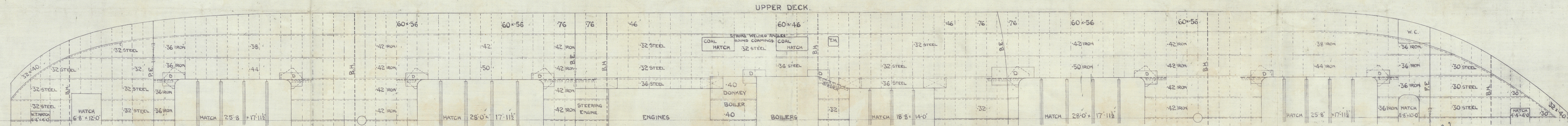
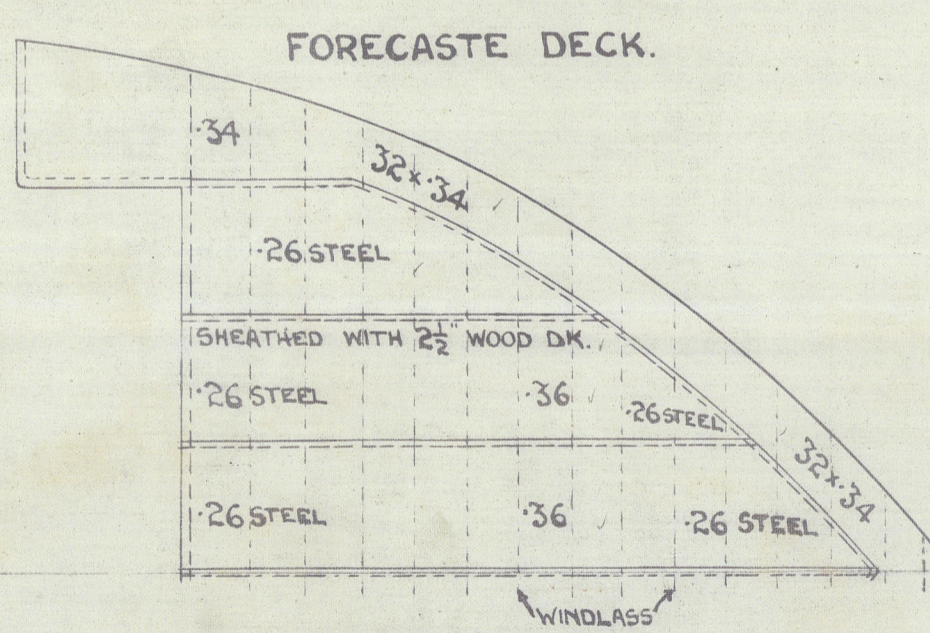


JOHN READHEAD & SONS,  
 Iron & Steel Ship Builders,  
 Engineers & Boiler Makers,  
 SOUTH SHIELDS.



PARTICULARS FOR FREEBOARD.

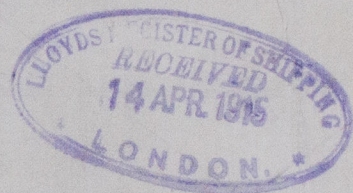
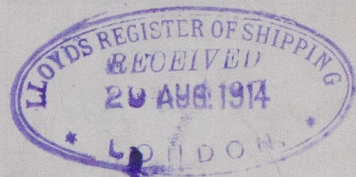
LENGTH BETWEEN PERPENDICULARS	347.0
BREADTH EXTREME	49.0
DEPTH MOULDED TO UPPER DK. AT MIDDLE OF LENGTH	26.8 1/2
OF HOLD (CELL DOUBLE BOTTOM TO UPPER DK.)	24.4 1/2
TONNAGE UNDER UPPER DECK	3475 TONS.
COEFFICIENT OF FINENESS	
LENGTH OF POOP	31.11' AT SIDE. 31.11' AT CENTRE. 7'0" HIGH
BRIDGE	93.4' 95.8' 7'0"
FORECASTLE	39.9' 32.9' 7'0"
SCANTLINGS CLASS 100 A.1.	
ROUND OF BEAM	11 1/2
SHEER, AFT SIDE STERN POST	= 4'5". FORE SIDE STEM 8'6"
LEN. FROM	= 2'5". LEN. FROM 4'6"
UPPER DECK NOT SHEATHED WITH WOOD.	



Meyers J. Readhead & Sons Ltd

449

Profile & deck plans



RETAIN

S.S. "STEELVILLE"  
NEWCASTLE-ON-TYNE

Report No 67897

RETAIN



© 2021

Lloyd's Register  
Foundation

2018-0069