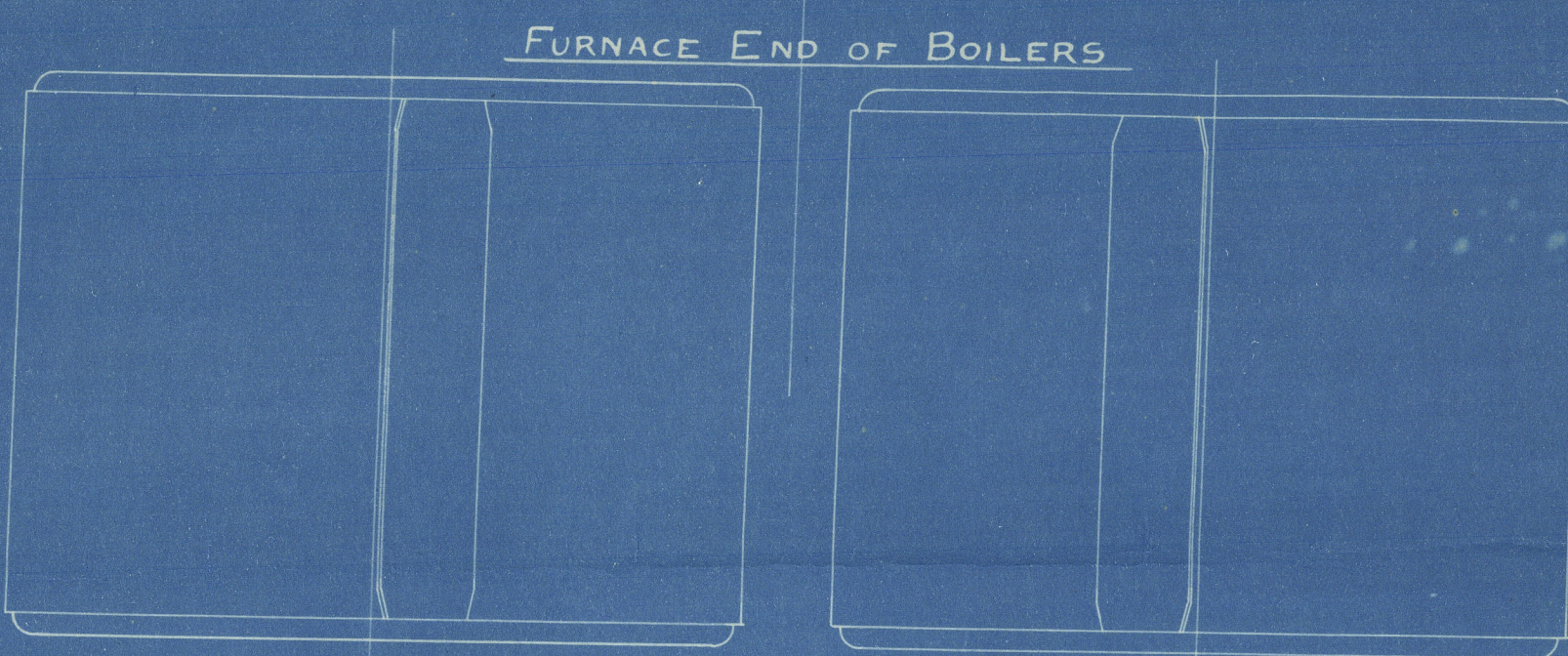
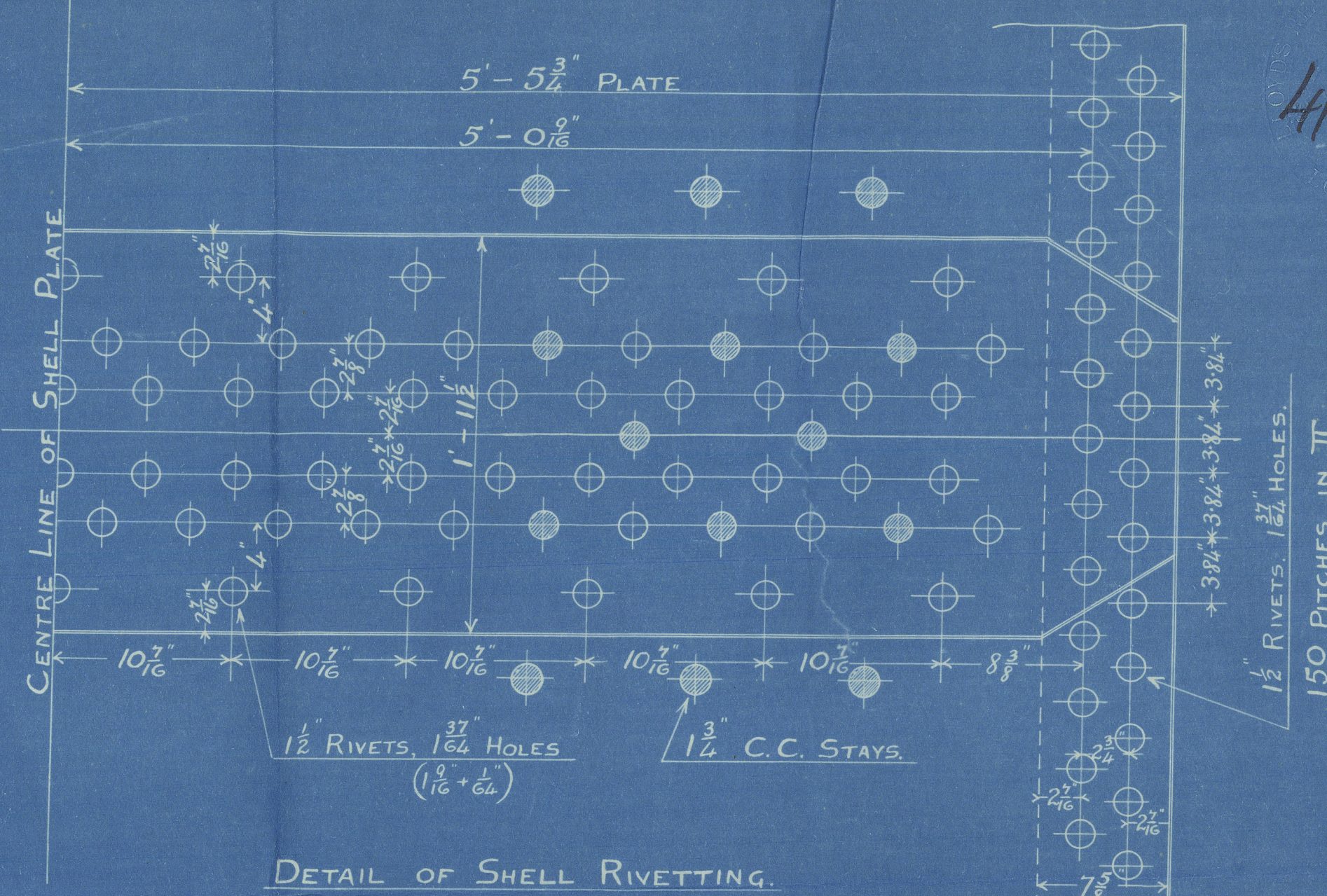


FURNACE END OF BOILER



POSITION OF BUTT STRAPS AND MANHOLE DOORS.

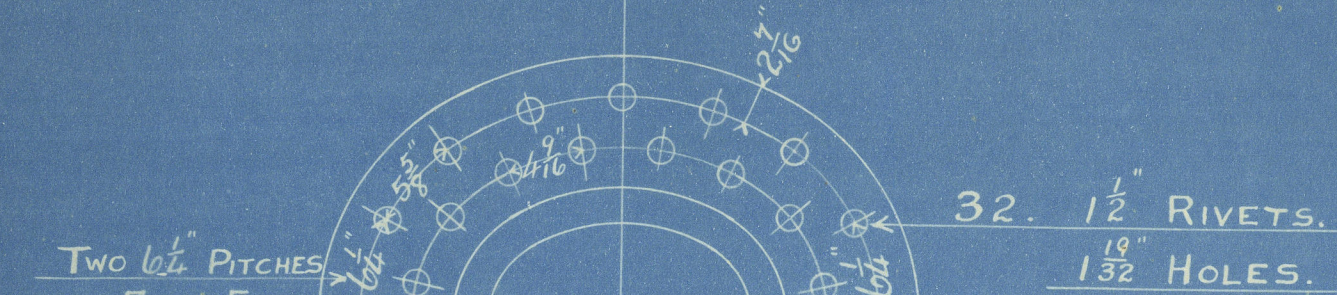
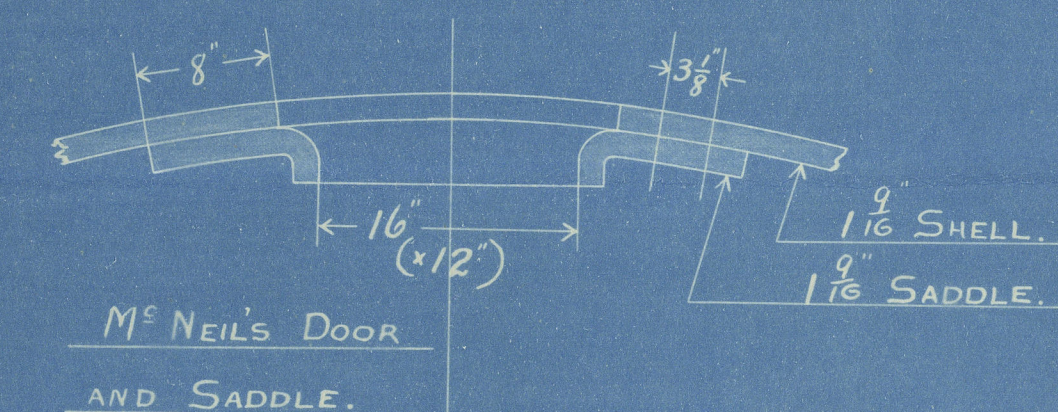
PARTICULARS	
HEATING SURFACE IN 284 TUBES	1751 sq. ft.
" " " 3 COMB. CHS.	316 "
" " " 3 FURNACES	162 "
" " " TOTAL	2229 "
GRATE SURFACE (3'-6" BARS)	59.81 "
AREA THROUGH TUBES	11.86 "
RATIO HEATING SURFACE GRATE SURFACE	37.3
" GRATE SURFACE AREA THRO' TUBES	5.04
STEAM SPACE CUB. FEET FOR 3 BOILERS	500
HEATING SURFACE	6687 sq. ft.
GRATE SURFACE	179.43 "



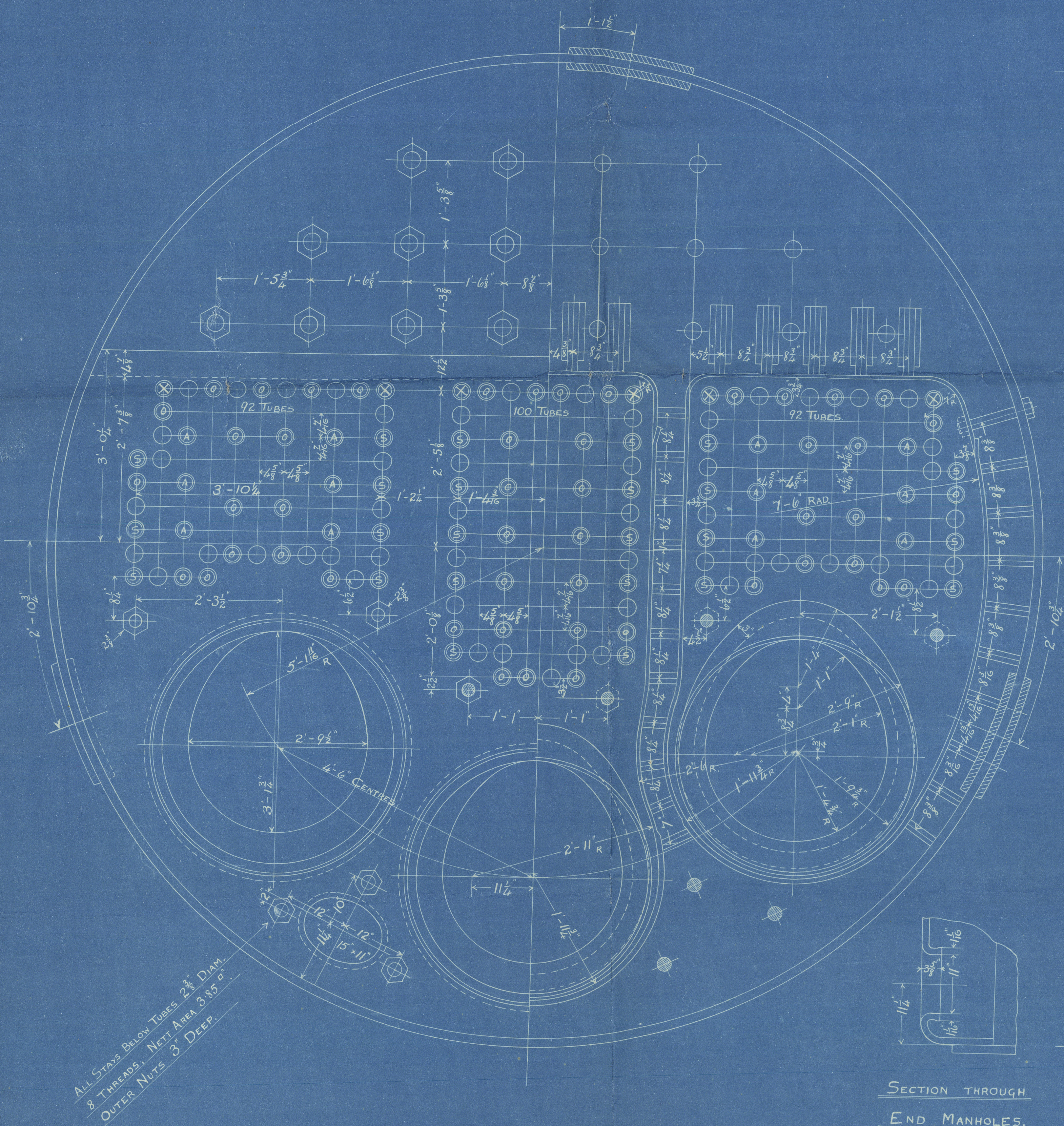
DETAIL OF SHELL RIVETTING.

SCALE 1/2"

RIVETTING	
LONGITUDINAL SEAMS	B.O.T. LLOYDS
SHELL 1 1/2", RIVETS 1 1/2", HOLES 1 3/4", PITCH 10 1/2", PLATE 5/16", RIVETS 7/8", 86.2; 83 1/2	
BUTT STRAPS 1 1/2" THICK, SHELL PLATES AND STRAPS TO HAVE A TENSILE STRENGTH OF 30 TO 33 TONS PER SQ. INCH.	
CIRCUMFERENTIAL SEAMS	B.O.T. LLOYDS
RIVETS 1 1/2", HOLES 1 3/4", PITCH 3 3/4", PLATE 5/16", RIVETS 50%; 51 3/4%	
ALL HOLES DRILLED IN PLACE, BOILER STEEL, TUBES AND GIRDERS OF IRON.	
UNDER BOARD OF TRADE AND LLOYDS SURVEY FOR A WORKING PRESSURE OF 215 LBS. PER SQ. IN.	

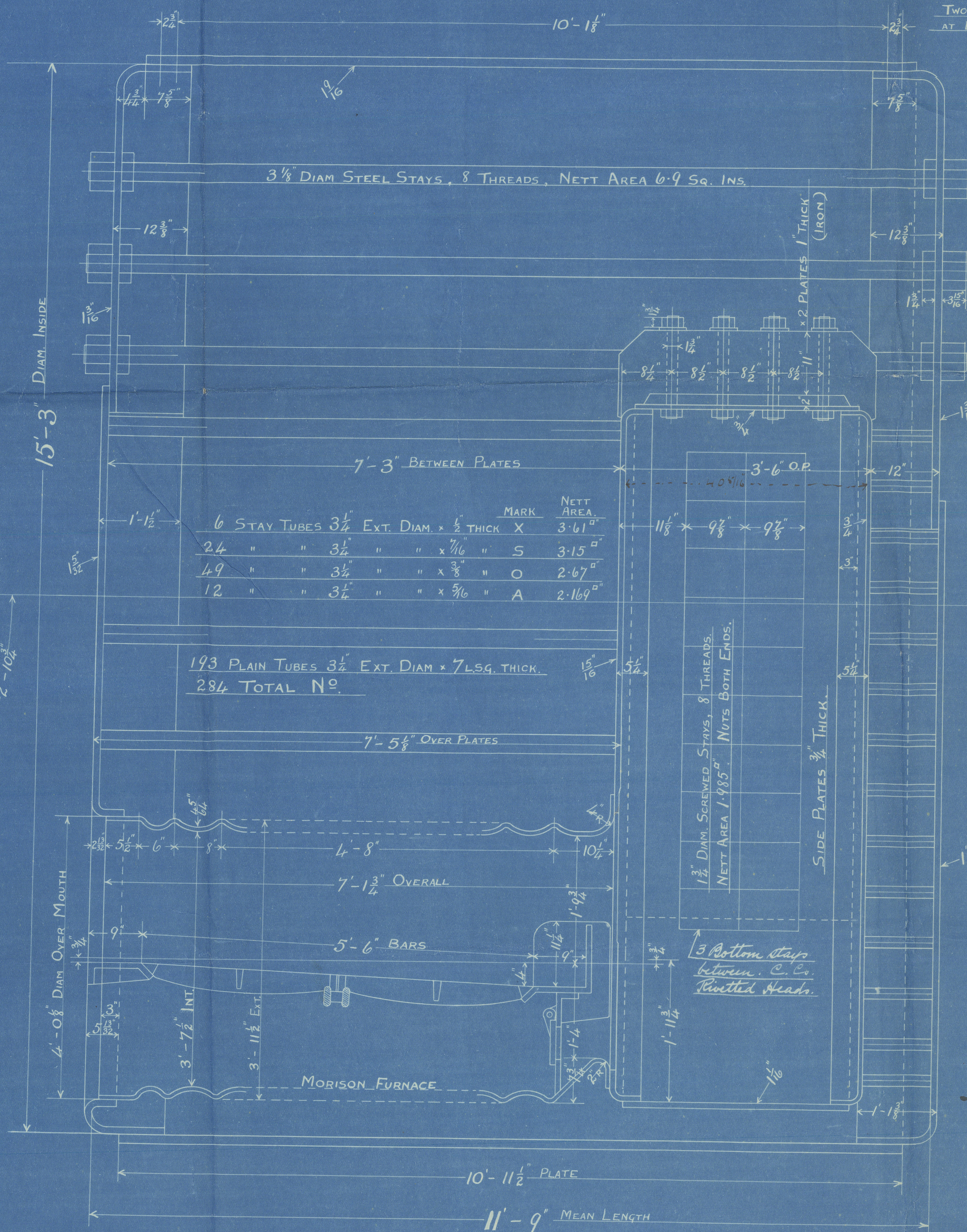


RIVETTING AT
SHELL MANHOLE.



ALL STAYS BELOW TUBES, 2 3/8" DIAM.
8 THREADS, NET AREA 3.65"
OUTER NUTS 3" DEEP.

SECTION THROUGH
END MANHOLES.



3 BOILERS FOR N° 441

SCALE 1" = ONE FOOT.

1-4-13.

mm 3/4/13
APP
4-4-13

MARGINAL STAYS IN COMB. CH. BACKS.
MARKED ● 2 1/2" DIAM. 8 THREADS, NET AREA 3.43"
" ○ 2" " 8 " " " 2.66"
ALL TO HAVE NUTS BOTH ENDS.

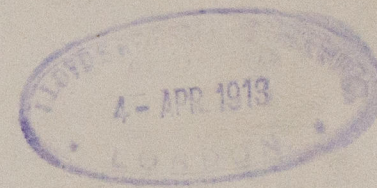


Dunbarri Jackson
Bols No 441. (3 Bols)

WP. 215. 3-4-13.

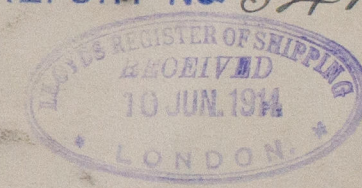
Cornell S/S No 359

(Tig Harmon.)



S/S "Spectator"

GLASGOW REPORT No 34100.



RETAIN

RETAIN



© 2021

Lloyd's Register
Foundation

W757-0128