

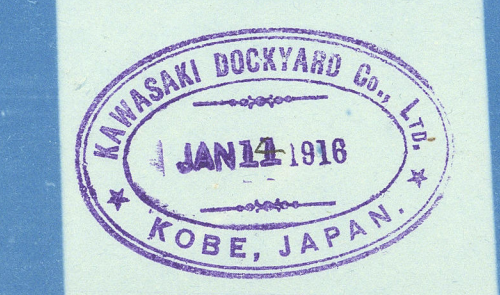
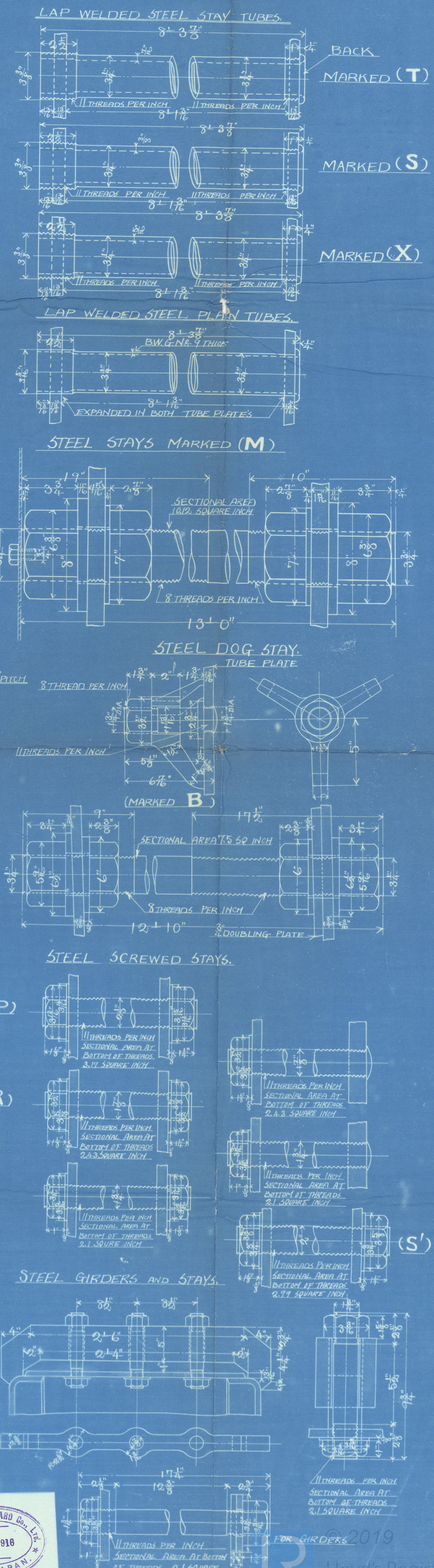
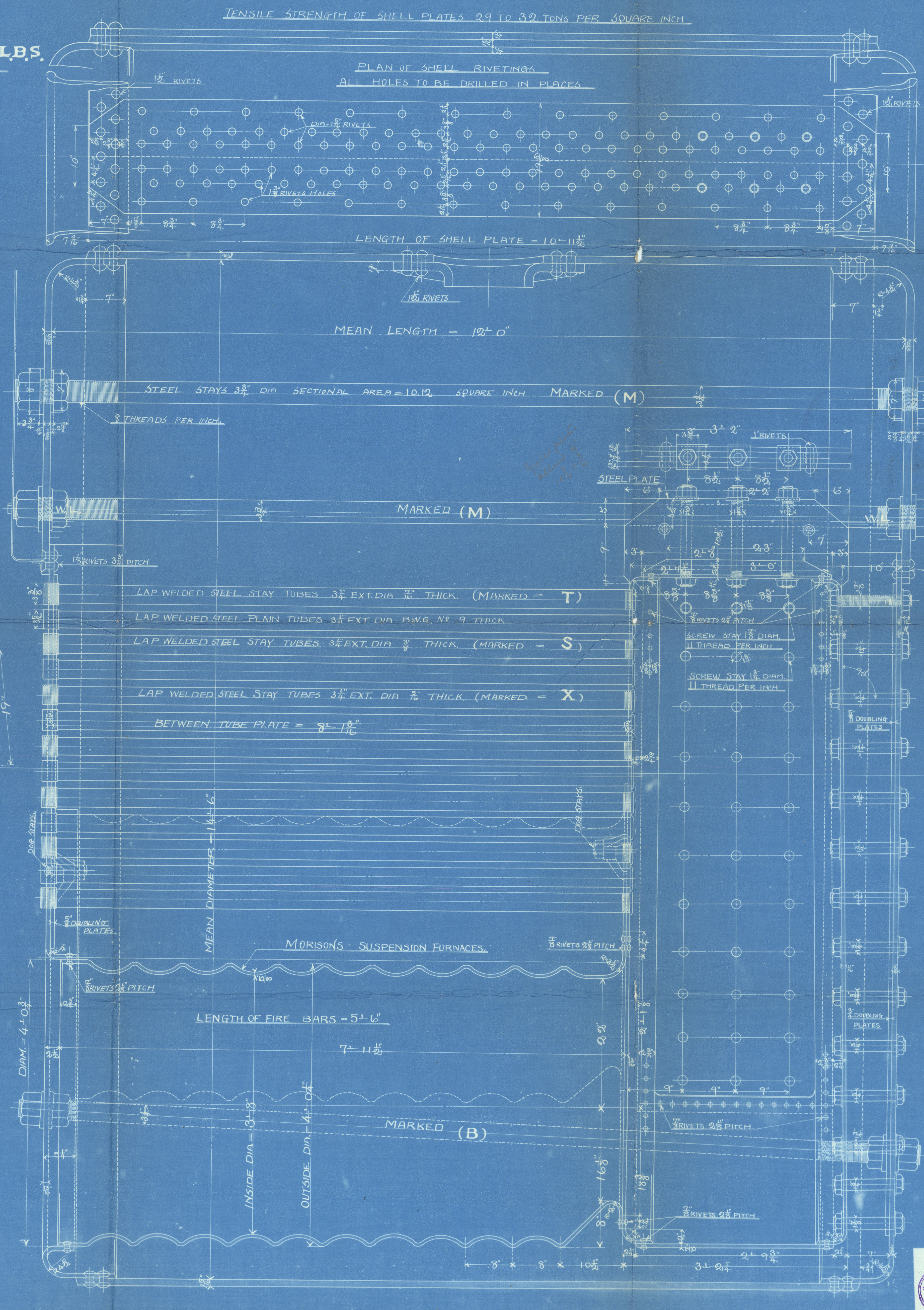
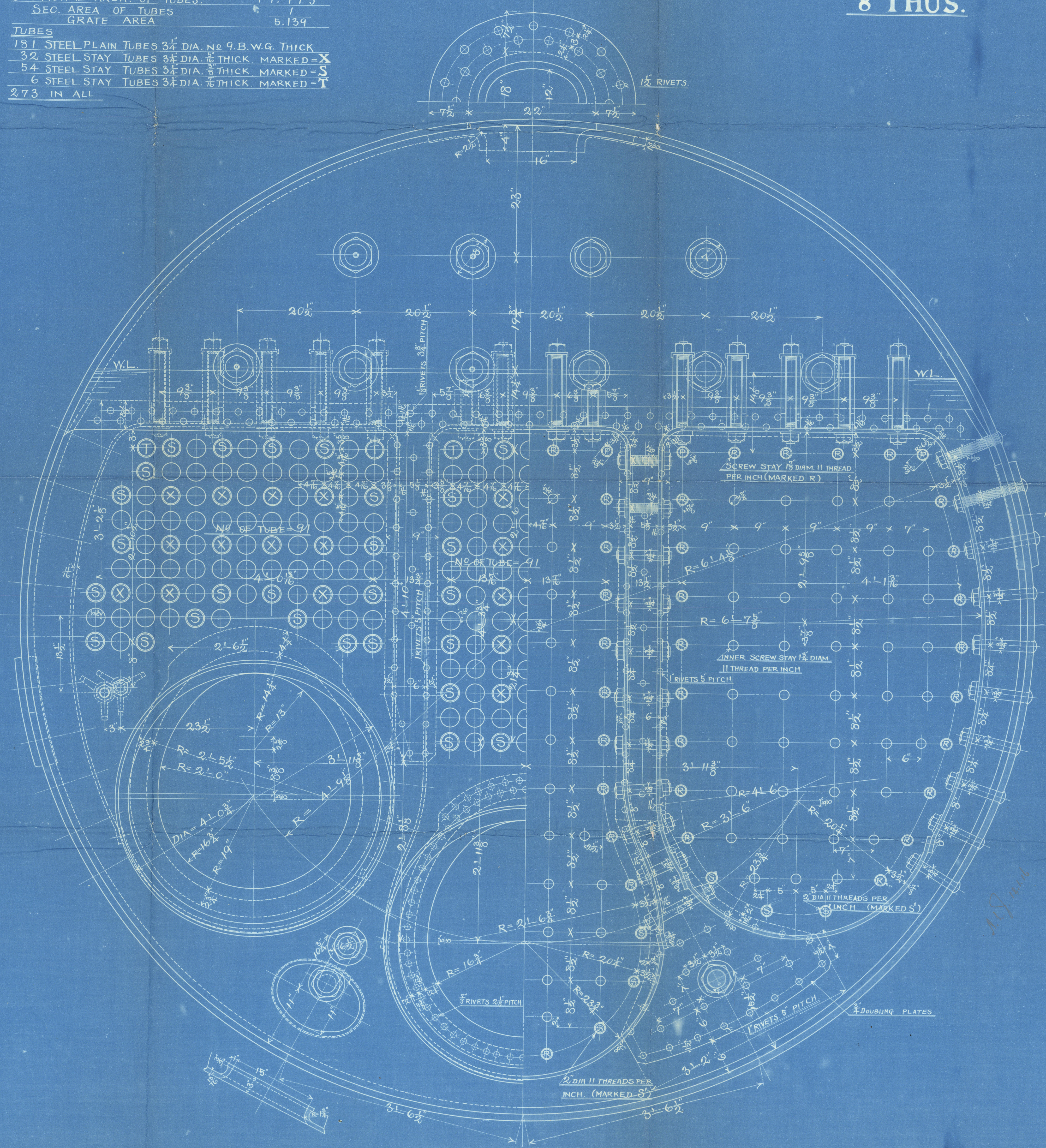
No. 2.

STEEL BOILERS FOR BUILDERS NO 391.2.3 & 4.

HEATING SURFACES.	
TUBES.	1881.221 ^{sq. ft.}
FLUES.	161.053 ["]
FIRE BOXES.	216.345 ["]
BACK TUBE PLATES.	46.205 ["]
TOTAL.	2304.824 ["]
GRATE AREA.	60.500 ["]
RATIO OF ¹ / _G	38.096
SECTIONAL AREA OF TUBES.	11.773 ["]
SEC. AREA OF TUBES.	1
GRATE AREA	5.139

TUBES
 131 STEEL PLAIN TUBES 3 1/4" DIA. NO 9 B.W.G. THICK
 32 STEEL STAY TUBES 3 1/4" DIA. 1/2" THICK MARKED = X
 54 STEEL STAY TUBES 3 1/4" DIA. 3/8" THICK MARKED = S
 6 STEEL STAY TUBES 3 1/4" DIA. 1/2" THICK MARKED = T
 273 IN ALL

(LARGE)
 DIA. 14'-6" x 12'-0" LONG.
 WORKING PRESSURE 200 LBS.
 SCALE 1 1/2 INCHES TO A FOOT.
 8 THUS.



Kawasaki no 391-2-3-4

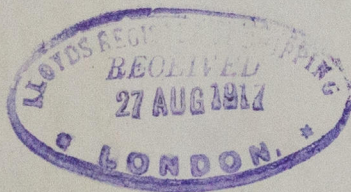
Steel Boiler. No. 2

(Large)

S. S. War Council

Kawasaki Dryd No 395

1 Pk Rpt No 2046



RETAINT



W964 2010132

Lloyd's Register
Foundation