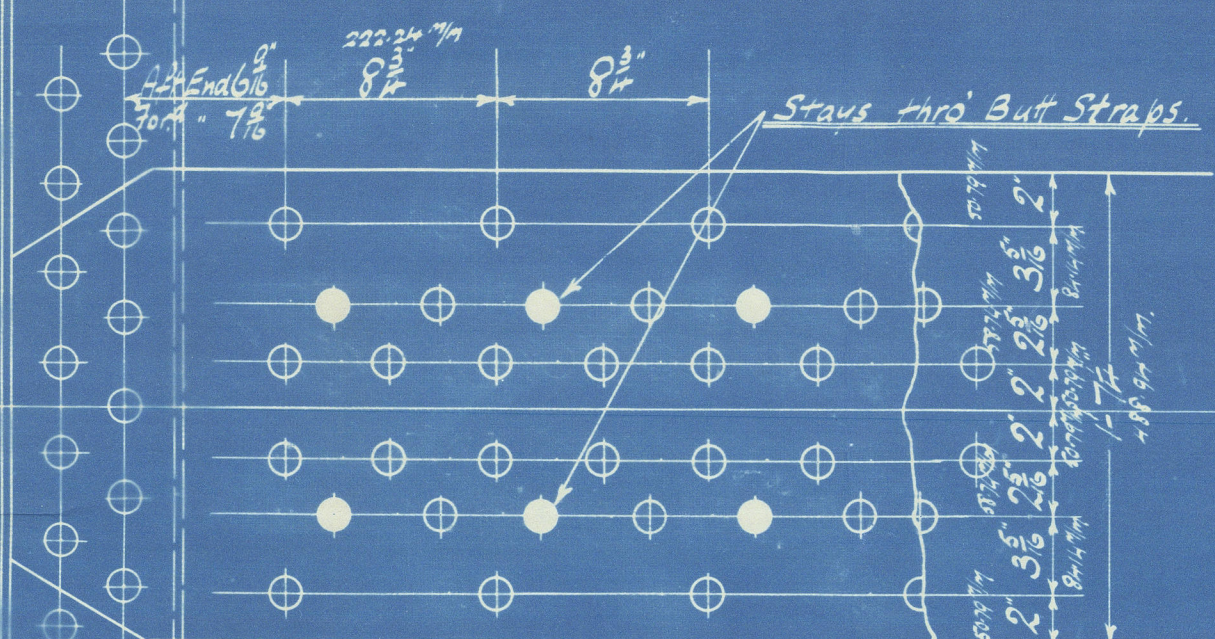


Circumferential Seams 1/8" Rivet No 16



Longitudinal Seams fitted with double butt straps.
Straps 1/8" thick. Rivet Holes 1 1/8" Dia. Scale 1/8" inches per foot.
Holes drilled in place. Hydraulic riveted.
Tensile strength of Shell Plates, Butt Straps, Manhole Stiffening Rings 28 to 32 Tons.
Tensile strength of Girders 28 to 32 Tons.
All other Plates & Furnaces 20 to 30 Tons.

RIVETING Tensile strength of Rivets 28 to 30 Tons.
Front & Back Seams Double Riveted. Rivet Holes 3/4" Dia. 5/8" gap.
Comb Ch^{ns} Bottoms. 28 to 30 Tons.
Comb Ch^{ns} & Furnaces Single. 28 to 30 Tons.

STEEL BOILERS

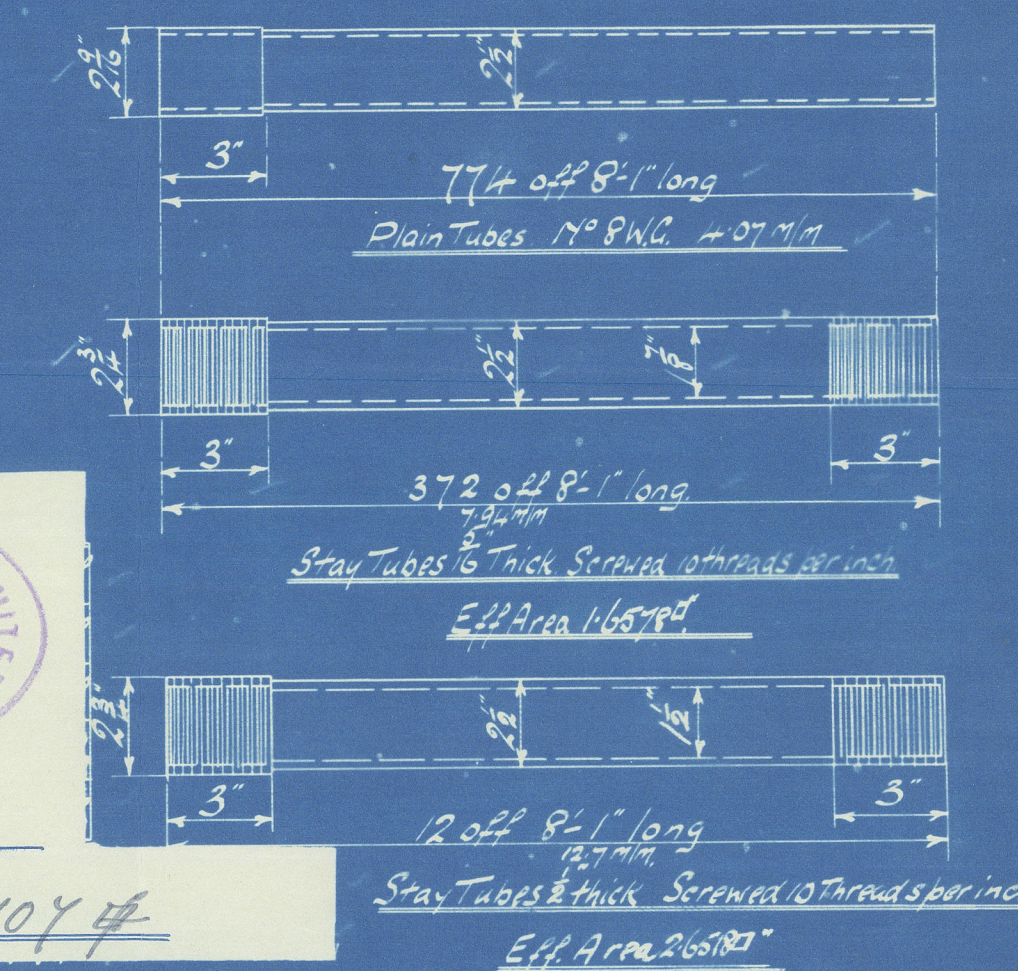
To Hamburg Police & Lloyd's requirements for a Working Pressure of 180 lbs per square inch. 1855 tons per sq in.
All Plates, Rivets, Girders & Through Stays of Steel.
Scale 1 inch per foot. T.A.B.

30/1/13

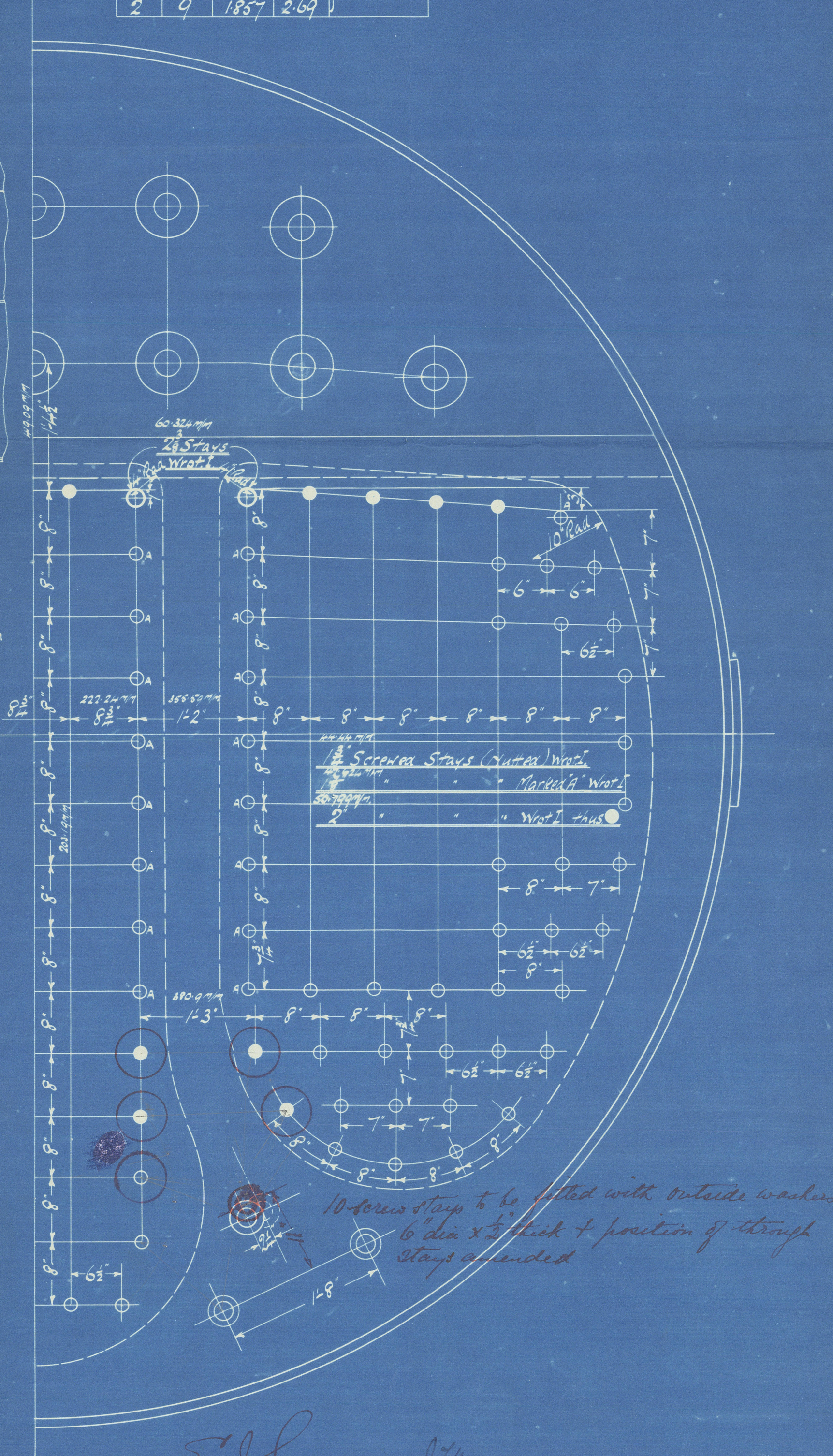
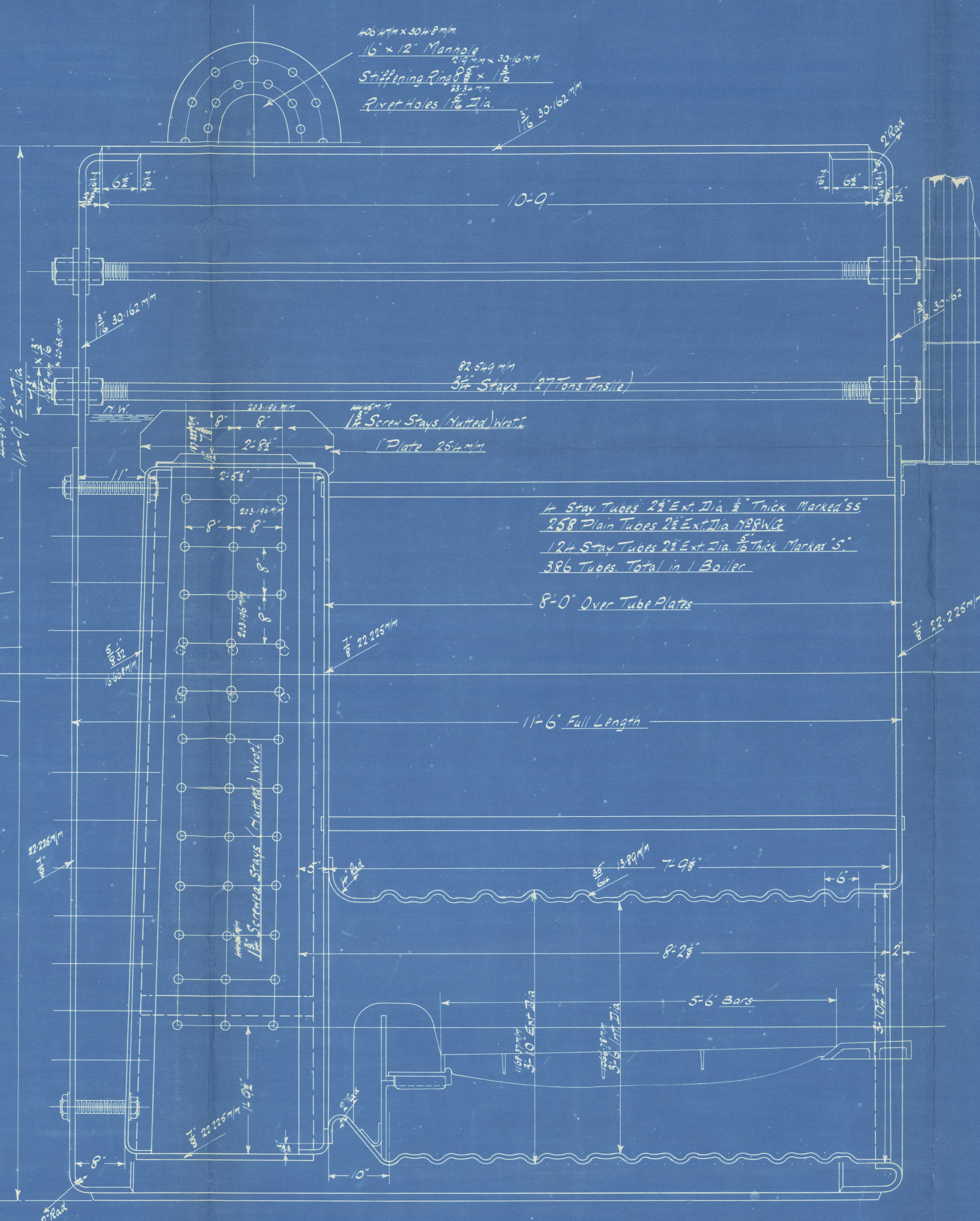
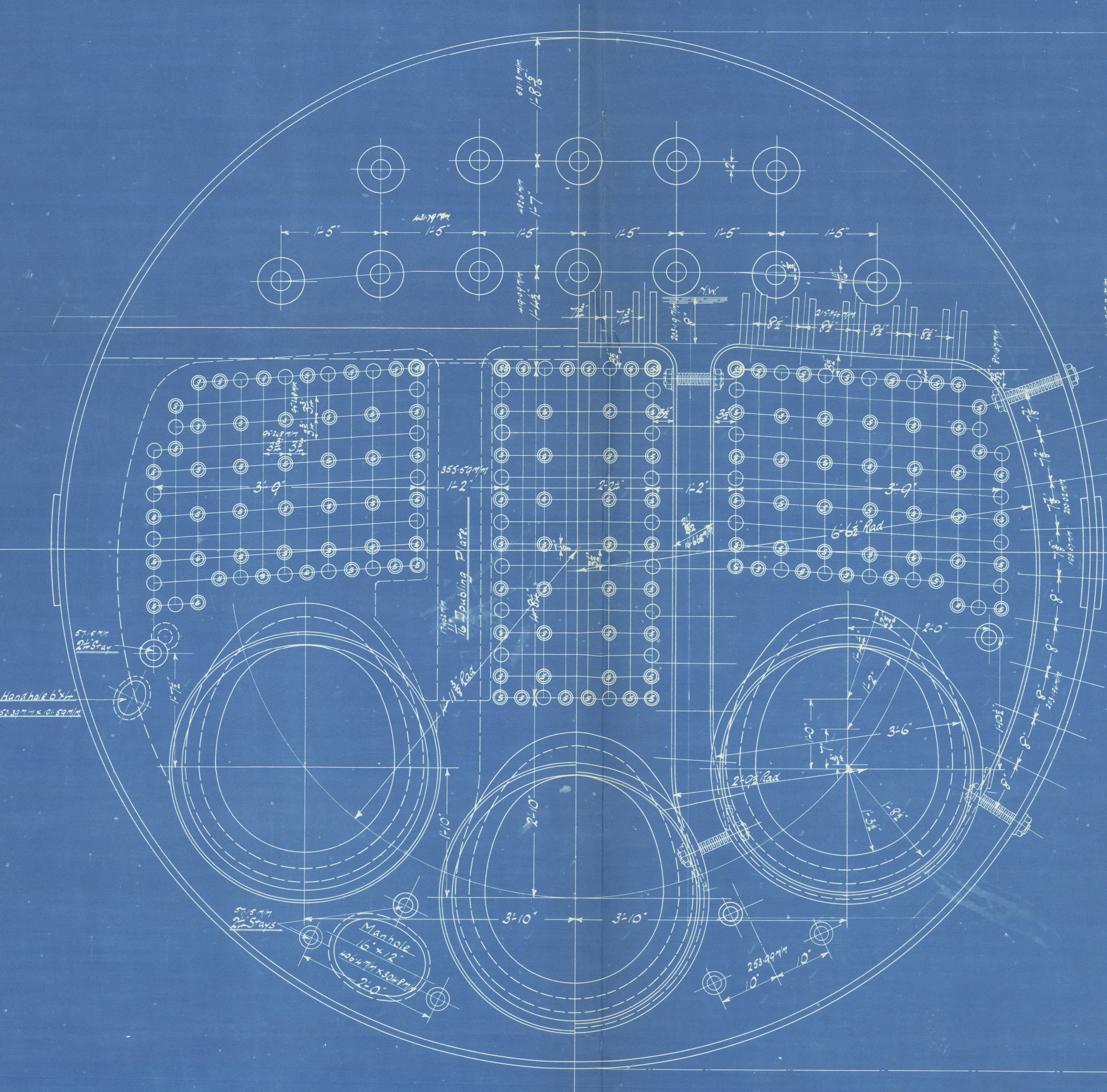
ENGINE			FURNACE DATE		
755	3	OFF	Intended for Messrs the Sunderland Shipbuilding Co ^{ys} Ltd	Leighton's	Jan 6 1913



Heating Surface
in 3 Boilers = 1104 sq ft



STAYS				
Diam	Thru	Ext	Area	Tensile
3"	6	2.036	7.22	24,500 lbs
2"	6	2.036	3.25	11,000 lbs
1 1/2"	6	2.161	3.68	12,200 lbs
1"	9	1.738	2.355	8,500 lbs
3/4"	9	1.607	2.081	7,800 lbs
5/8"	9	1.857	2.69	10,000 lbs



E.J.S.
30.7.13.

S.M.

Sld 276
758

S'land. S. B 6°
276

J. Dickinson & Sons
758

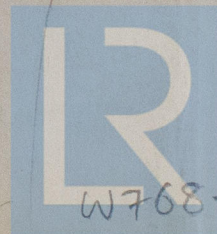
W. P. 180th



Shirley

Sld Rpt. no 25823

RETAIN



© 2020

Lloyd's Register
Foundation

W768-0023