

MIDSHIP SECTION.

S.S. No. 911.

SCALE 1/2" = 1 FOOT.

DIMENSIONS: 435' 0" B.P. x 56' 6" EXT. x 56' 3" MLD. x 32' 2" MLD. TO UPPER DECK.
TO CLASS 100, A.I. AT LLOYD'S SPECIAL SURVEY.

EQUIPMENT	NUMBER	
HULL		38458
FORECASTLE	41.75 x 7.95 x .75	242
BRIDGE	143.75 x 7.95 x .75	858
POOP	49.50 x 7.95 x .75	271
BRIDGE DECKHOUSES	93.5 x 7.5 x .50	331
BRIDGE DECKHOUSES	29.0 x 7.5 x .50	108
		40275

EQUIPMENT	NUMBER	
3 BOWER ANCHORS EACH 64.83 CWT'S STOCKLESS		
1 STREAM ANCHOR 12 CWT'S EX-STOCK		
270 FATHOMS OF 2 1/8" STUD CHAIN CABLE		
90 FATHOMS OF 5" STEEL STREAM WIRE 6 x 12		
120 FATHOMS OF 4 3/4" SPECIAL FLEX. STEEL WIRE TOWING 6 x 24		
2 AT 90 FATHOMS 2 3/4" STEEL WIRE HAWSERS 6 x 12		
2 AT 90 FATHOMS 2 1/2" STEEL WIRE WARPS 6 x 12		

RIVETING NOTE.
RIVETS IN FRAMES TO FLOORS AND CROSS TIE PLATES IN AFT PEAK SPACED 5 DIAM. APART C^R TO C^R.
RIVETS IN FRAMES TO SHELL AT PLAT OF DOUBLE BOTTOM 1/2" HALF LENGTH FOR^D SPACED 3/2 DIAM. (TWO COMPLETE ROWS).
RIVETS IN FRAMES TO FLOORS AT PLAT OF DOUBLE BOTTOM 1/2" HALF LENGTH FOR^D SPACED 3/2 DIAM. (TWO COMPLETE ROWS).
RIVETS IN SIDE FRAMES TO SHELL SPACED 7 DIAM. APART, 3/2 DIAM. APART IN WAY OF FORE AND AFT PEAK TANKS.
DEEP TANK AND DEEP FRAMING FORWARD.
RIVETS IN BOTTOM FRAMES TO SHELL AFT HALF LENGTH FORWARD SPACED 7 DIAM. C^R TO C^R.
RIVETS IN 2 R BUTTS OF OUTSIDE PLATING AND OF DECK STRINGER PLATES SPACED 3/2 DIAM. APART C^R TO C^R.
RIVETS IN 4 R BUTTS OF OUTSIDE PLATING AND OF DECK STRINGER PLATES SPACED 4 DIAM. APART C^R TO C^R.
RIVETS IN 5 R BUTTS OF OUTSIDE PLATING AND OF DECK STRINGER PLATES SPACED 4 1/2 DIAM. APART C^R TO C^R.
RIVETS IN BEAMS OF SHELL PLATING, DECK PLATING AND INNER BOTTOM PLATING AS PER TABLE 40.
RIVETS IN BUTTS OF DECK PLATING, INNER BOTTOM AND MARGIN PLATING SPACED 4 DIAM. APART C^R TO C^R.
RIVETS IN BEAMS AND BUTTS OF BULKHEAD AND TUNNEL PLATING, MARGIN ANGLES AND WEATHER DECK STRINGER ANGLES AND BULKHEAD FRAME TO BULKHEAD SPACED 4 1/2 DIAM. APART C^R TO C^R.
RIVETS IN FLAT KEEL ANGLES, VERTICAL ANGLES CONNECTING FLOORS TO CENTRE GIRDER AND SHELL FLANGE OF WATERTIGHT BULKHEAD FRAME SPACED 5 DIAM. APART C^R TO C^R.
RIVETS IN FRAMES TO FLOORS AFT HALF LENGTH FORWARD REVERSE FRAMES TO FLOORS AND INNER BOTTOM PLATING VERTICAL ANGLES TO FLOORS AND SIDE GIRDERS, IN BULKHEAD STIFFENERS (EXCEPT PEAK AND DEEP TANK BULKHEADS) AND IN DECK PLATING TO BEAMS ON EVERY FRAME SPACED 7 DIAM. APART C^R TO C^R.
RIVETS IN DECK PLATING TO BEAMS ON ALTERNATE FRAMES AND IN BULKHEAD STIFFENERS AT DEEP TANK AND PEAK TANK BULKHEADS SPACED 6 DIAM. APART C^R TO C^R.
RIVETS IN CENTRE GIRDER TOP ANGLES SPACED 5 DIAM. APART C^R TO C^R WATERTIGHT.
RIVETS IN CENTRE GIRDER TOP ANGLES SPACED 7 DIAM. APART C^R TO C^R NON-WATERTIGHT.

SIDE FRAMING.
FRAMES SPACED 27' APART, 24' APART IN FORE AND AFT PEAKS.
MAIN SIDE FRAMES ABOARD HALF LENGTH FORWARD CLEAR OF DEEP TANK & PEAK TANKS 10 x 3 1/2 x 40 B.A. ON EVERY FRAME TO SECOND DECK.
MAIN SIDE FRAMES FOR^D HALF LENGTH FORWARD CLEAR OF DEEP FRAMING 11 x 3 1/2 x 42 B.A. (FR^D 146-155) - 11 x 3 1/2 x 42 B.A. (FR^D 157-169).
MAIN SIDE FRAMES IN FORE & AFT PEAK TANKS 8 x 3 1/2 x 35 B.A. ON EVERY FRAME TO UPPER DECK AND ALTERNATELY TO POOP & FORECASTLE DECKS IN WAY OF SHELL.
MAIN SIDE FRAMES IN DEEP TANK 10 x 3 1/2 x 50 B.A. ON EVERY FRAME TO SECOND DECK.
MAIN SIDE FRAMES IN WAY OF DEEP FRAMING FORWARD (FR^D 166-183) - 10 x 3 1/2 x 46 B.A. ON EVERY FRAME TO SECOND DECK WITH 6 x 3 1/2 x 54 REVERSE ANGLE FITTED TO MAIN FRAMES FORMING 12 GIRDER.
TWEEN DECK FRAMES 8 x 3 1/2 x 36 B.A. 8 x 3 1/2 x 36 B.A. BETWEEN FRAMES 157-183 SCARPHED 12 TO MAIN FRAMES AT SECOND DECK AND CARRIED TO UPPER DECK ON EVERY FRAME AND CARRIED TO POOP, BRIDGE & FORECASTLE DECKS ON ALTERNATE FRAMES IN WAY OF SHELL. THE FOUR FRAMES AT FORE AND AFT ENDS OF BRIDGE DECK 8 x 3 1/2 x 36 B.A. ALL EXTENDING TO BRIDGE DECK.
INTERMEDIATE FRAMES IN POOP 4 x 3 x 35 O.A. HAUSING FRAMES.
INTERMEDIATE FRAMES IN FORECASTLE 5 x 3 x 34 O.A. SCARPHED OR BRACKETED.
FRAMES IN BOLER ROOM & PERMANENT BUNKERS (HOLD & TWEEN DECKS) TO BE INCREASED .05.

OWNERS REQUIREMENTS (NOT INCLUDED IN SCANTLING)

FLOORS INTERCOSTALS & REVERSE FRAMES IN THE STOCKHOLD AND BOLER SPACES TO BE 1/20 THICKER THAN LLOYD'S RULES.
TANK TOP 1" THICK UNDER EUGINES, REMAINDER OF EUGINE & BOLER SPACE 3/4" THICK.
MARGIN PLATES IN EUGINE & BOLER SPACE 3/4" THICK.
SHAFT TUNNEL UNDER HATCHWAYS TO BE 1/20 THICKER THAN LLOYD'S RULES.

CENTRE GIRDER.
44 x 54 FOR 1/2 LEN. & TO 44 AT ENDS.
160 IN B.O. BUTTS LAPPED 5 R FOR 6 AFT.
VERTICAL ANGLES 3 1/2 x 3 1/2 x 48 SINGLE - 52 B.S.
5 x 5 x 42 SINGLE UNDER EUGINE SPACE & THRUST BEATING - 5 x 5 x 52 UNDER BOLER BEARERS.

INNER BOTTOM PLATING 1/4" FOR 1/2 LEN. & TO 1/4 AT ENDS.
38 FOR 1/2 LEN. 50 IN B.S.
50 IN BOLER SPACE BUTTS LAPPED 5 R TO 1 R AT ENDS BEAMS 1 R.

TANK TOP CENTRE STRAKE 50 x 50 FOR 1/2 LEN. & TO 48 AT ENDS.
50 IN EUGINE SPACE.
50 IN BOLER SPACE BUTTS LAPPED 5 R TO 2 R AT ENDS.

DOUBLE TOP ANGLES 3 1/2 x 3 1/2 x 96 FOR 1/2 LEN. & TO 48 AT ENDS.
60 IN BOLER SPACE.
2 1/2 CEILING UNDER HATCHES LID ON BATTERS.

REVERSE FRAMES 2 1/2 x 2 1/2 x 42 B.S. 3 1/2 x 3 1/2 x 42 B.S. 3 1/2 x 3 1/2 x 42 B.S. 3 1/2 x 3 1/2 x 42 B.S.

INTERCOSTALS 30 x 40 FOR 1/2 LEN. & TO 40 UNDER EUGINES - 50 IN B.S.
3 1/2 x 3 1/2 x 42 - DOUBLE BET. FR^S 145-155.

DOUBLE KEEL ANGLES 4 x 4 x 58 FOR 1/2 LEN. & TO 54 AT ENDS.

ADDITIONAL SIDE GIRDERS IN WAY OF EUGINE & THRUST BEATING.

NO MANHOLES TO BE OUT IN FLOORS OR INTERCOSTALS UNDER PILLARS.

THICKNESS OF BOTTOM SHELL PLATING FROM FORWARD HALF LENGTH FORWARD TO RULE POSITION OF COLLISION BULKHEAD .70.

FIRST LONGITUDINAL NUMBER L x D = 435.0 x 32.16	= 3969.60
SECOND LONGITUDINAL NUMBER L x (B+D) = 435.0 x (56.25 + 32.16)	= 38458.35
PROPORTION 1/2 D TO UPPER DECK = 435.0 x 32.16	= 13.82
PROPORTION 1/2 D TO BRIDGE DECK = 435.0 x 40.12	= 10.84
D MOULDED DEPTH	= 32.12
d = 32.12 - (11.0 + 3.66)	= 17.46
d AT HALF LENGTH FORWARD	= 20.30
ERECTIONS	= 53.7%

BRIDGE DECK PLATING
1/4" ABREAST OPENINGS
38 INSIDE LINE OF OPENINGS
BUTTS LAPPED 5 R

BRIDGE DECK STRINGER PLATE
64 x 50 FOR 6 AFT
BUTTS LAPPED 5 R
STRINGER ANGLE 5 x 5 x 50

FORECASTLE DECK STRINGER PLATE 35 x 50
BUTTS LAPPED 5 R STRINGER ANGLE 3 1/2 x 3 1/2 x 50
DECK PLATING 3/4" (UNHEATED) BUTTS LAPPED 5 R
BEAMS ON EVERY FRAME AS PER PROFILE
5 DECK PLAN

POOP DECK STRINGER PLATE 37 x 50
BUTTS LAPPED 5 R STRINGER ANGLE 3 1/2 x 3 1/2 x 50
DECK PLATING 3/4" (UNHEATED) BUTTS LAPPED 5 R
BEAMS ON EVERY FRAME AS PER PROFILE
6 DECK PLAN

M' OUT
BRIDGE .61 POOP .40 FOR 1/2 LEN. & TO 48 AT ENDS.
BUTTS LAPPED 5 R IN BRIDGE
1 R IN POOP & FORECASTLE

L' IN
BRIDGE .61 POOP .40 FOR 1/2 LEN. & TO 48 AT ENDS.
BUTTS LAPPED 5 R IN BRIDGE
1 R IN POOP & FORECASTLE

K' OUT
SHEERSTRAKE 62 x 93 FOR 1/2 LEN. & TO 48 AT ENDS.
INSIDE DOUBLER AT BREAKS 50 x 50
BUTTS LAPPED 5 R FOR 1/2 LEN. & TO 4 R AT ENDS 3 R IN BRIDGE

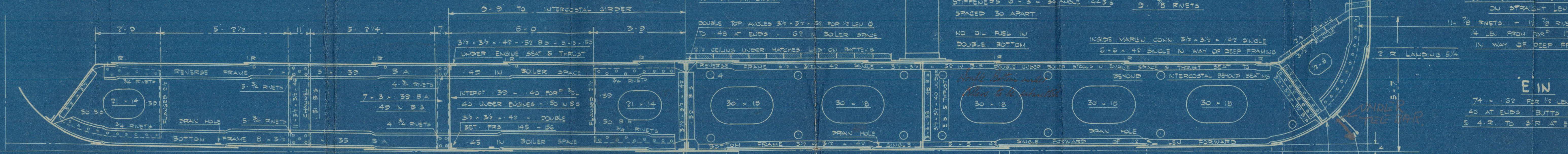
J' IN
78 x 162 FOR 1/2 LEN. & TO 48 AT ENDS.
BUTTS LAPPED 5 R FOR 1/2 LEN. & TO 3 R AT ENDS (NOT EXCEED .68)
3 R IN BRIDGE

H' OUT
78 x 162 FOR 1/2 LEN. & TO 48 AT ENDS.
BUTTS LAPPED 5 R

G' IN
78 x 162 FOR 1/2 LEN. & TO 48 AT ENDS.
BUTTS LAPPED 5 R

F' OUT
78 x 162 FOR 1/2 LEN. & TO 48 AT ENDS.
BUTTS LAPPED 5 R
FLUSH BUTTS WITH STRAP INSIDE ON STRAIGHT LEN. &

E' IN
74 x 162 FOR 1/2 LEN. & TO 48 AT ENDS.
BUTTS LAPPED 5 R TO 4 R AT ENDS



SPECIAL PLAN OF BOTTOM STRENGTHENING FORWARD TO BE SUBMITTED LATER

DISPOSITION OF FLOORS.
SOLID FLOORS ON EVERY FRAME UNDER THRUST EUGINES, BOLER BEARERS BULKHEADS AND FORWARD 2/3 LENGTH FORWARD ELSEWHERE SOLID FLOORS ON EVERY THIRD FRAME BRACKET FLOORS INTERMEDIATE

KEEL OUT

51 x 62 FOR 1/2 LEN. & TO 72 AT ENDS.
72 x 62 FOR 1/2 LEN. & TO 48 AT ENDS BUTTS LAPPED 5 R TO 3 R AT ENDS

A' IN

72 x 62 FOR 1/2 LEN. & TO 48 AT ENDS BUTTS LAPPED 5 R TO 3 R AT ENDS

THICKNESS OF BOTTOM SHELL PLATING FROM FORWARD HALF LENGTH FORWARD TO RULE POSITION OF COLLISION BULKHEAD .70.

B' OUT

73 x 62 FOR 1/2 LEN. & TO 48 AT ENDS BUTTS LAPPED 5 R TO 3 R AT ENDS

C' IN

73 x 62 FOR 1/2 LEN. & TO 48 AT ENDS BUTTS LAPPED 5 R TO 3 R AT ENDS

D' OUT

73 x 62 FOR 1/2 LEN. & TO 48 AT ENDS BUTTS LAPPED 5 R TO 3 R AT ENDS

MARGIN PLATE TO RULE 35 x 52 FITTED ABOUT 37 x 52 - 50 IN B.S. BUTTS LAPPED 5 R THROUGHOUT

APPROVED
LLOYD'S REGISTER OF SHIPPING
Hudson
6.5.27

LITHGOWS LTD

Nº 911

MIDSHIP SECTION.

S. S. SCIENTIST

GREENOCK FIRST ENTRY

REPORT Nº 20614.

W77- 0022



© 2020

Lloyd's Register
Foundation