

	DIA. OF RIVET	DIA. OF HOLE	PITCH	PLATE	RIVET	W.P. OF SHELL BY RULE
LONGITUDINAL JOINT	1 1/8"	1 3/8"	10 1/2"	34.22	91.7	201 LBS/SQ. IN.
CIRC. JOINT ENDS	1 1/8"	1 3/8"	4.816	64.79	16.3	
MIDDLE	1 1/8"	1 3/8"	4.816	66.2	66.5	

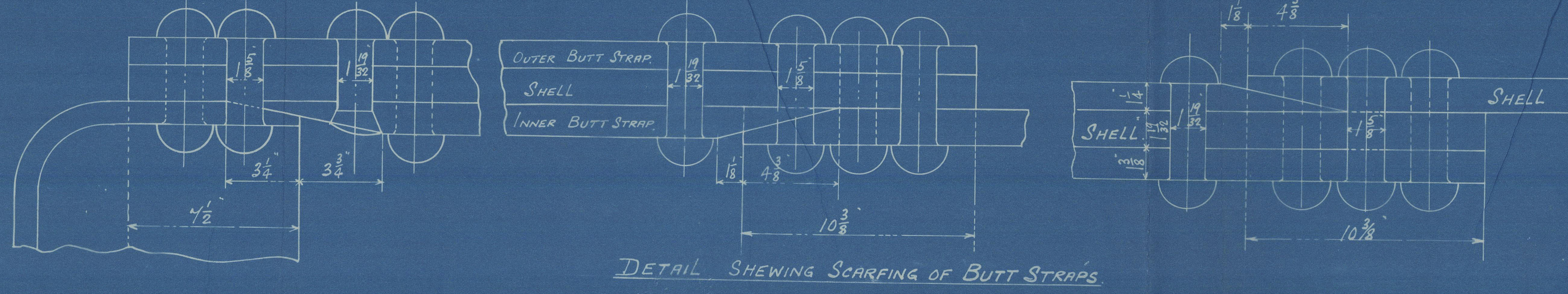
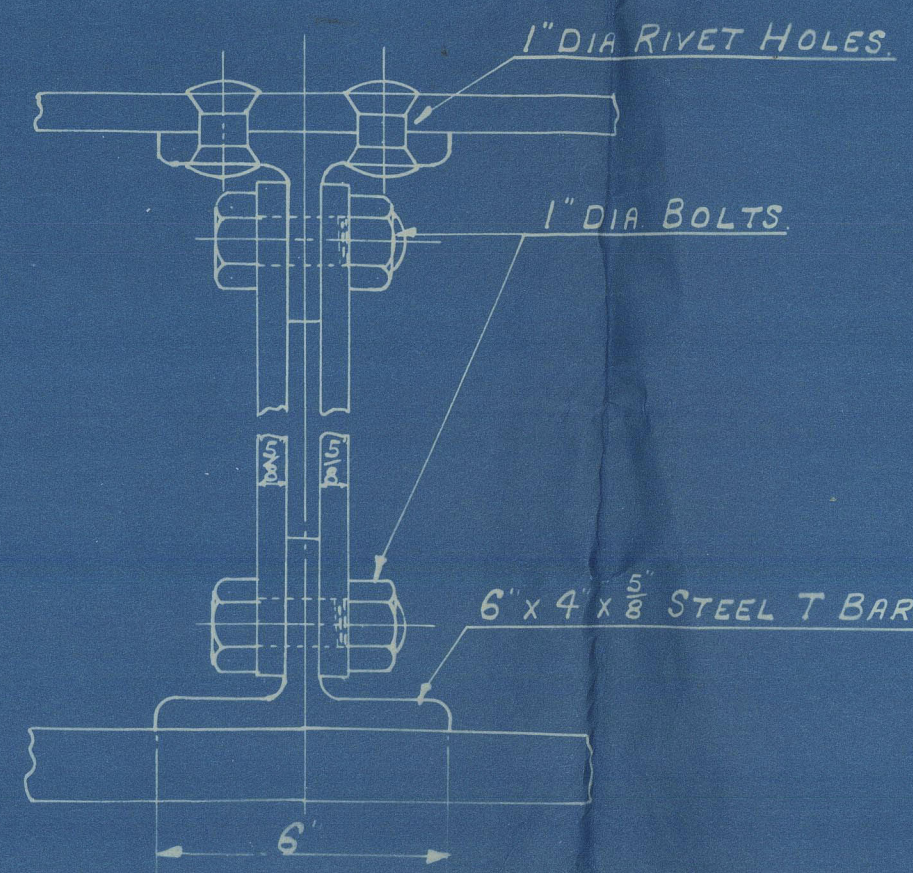
OUTER BUTT STRAP 1 1/2" THICK  
INNER 1 1/8"

ALL PLATES, LONGITUDINAL STAYS & RIVETS OF SIEMENS-MARTIN MILD STEEL  
COMBUSTION CHAMBER SCREWED STAYS WROT IRON  
TUBES - LAP WELDED WROT IRON  
LONGITUDINAL JOINTS - DOUBLE BUTT STRAPS TREBLE RIVETED  
END CIRC. SEAMS - DOUBLE RIVETED LAP JOINT  
MIDDLE - TREBLE  
WORKING PRESSURE - 200 LBS. PER SQ. INCH  
TEST - 350 LBS.  
ALL HOLES TO BE DRILLED AFTER PLATES ARE BENT & FITTED TOGETHER  
THEN PLATES TAKEN APART & BURRS REMOVED  
RIVETING DONE BY HYDRAULIC PRESSURE WHERE PRACTICABLE  
OIL OR COAL FIRED IN CONJUNCTION WITH HOWDEN'S FORCED DRAUGHT  
SPARE GEAR - 12 PLAIN TUBES

	THICK	TENSILE LIMITS
SHELL PLATES	1 1/8"	28-32 TONS
INNER BUTT STRAPS	1 1/8"	
OUTER BUTT STRAPS	1 1/2"	
GIRDER PLATES	1 1/4"	
TOP END PLATES	1 1/2"	28-30
BOTT	1 1/2"	
BACK TUBE PLATES	3/32"	
WRAPPER PLATES	3/16"	
FURNACES	1 1/4"	
CRUTCH PLATES	5/8"	28-32
ANGLES & T BARS	3/4"	
HANGING STAYS	26-30	
STEAM SPACE STAYS	28-32	
WATER		
RIVET BARS	26-30	
COMB. CH. STAYS (WROT IRON)	2 1/2 TONS	

HEATING SURFACE	50 FEET
1244 TUBES 2 1/2" DIA X 8' 0" LONG	6513
8 FURNACES	463
COMBUSTION CHAMBERS	556
TOTAL IN ONE BOILER	7532
TWO BOILERS	15,064

BOILERS OIL OR COAL BURNING	
SIZE OF SAFETY VALVES 3 1/2" TREBLE SPRING (200 LB)	



## D. E. BOILERS ENCINES N° 627-8

17' 6" MEAN DIA. X 21' 6" MEAN LENGTH X 200 LBS/SQ. IN. W.P.  
2 OFF FOR EACH N°  
TO PASS LLOYDS TESTS & REQTS  
SCALE: 1" = 1 FOOT  
17th JUNE, 1925

DRC. N° 3981



JOHN G. KINCAID & CO. LTD.  
(DRAWING OFFICE)  
24 JUN. 1925  
ENGINEERS & BOILERMAKERS,  
GREENOCK.

ENCLOSURE  
No 961  
"JUSTO"

W77-0161