

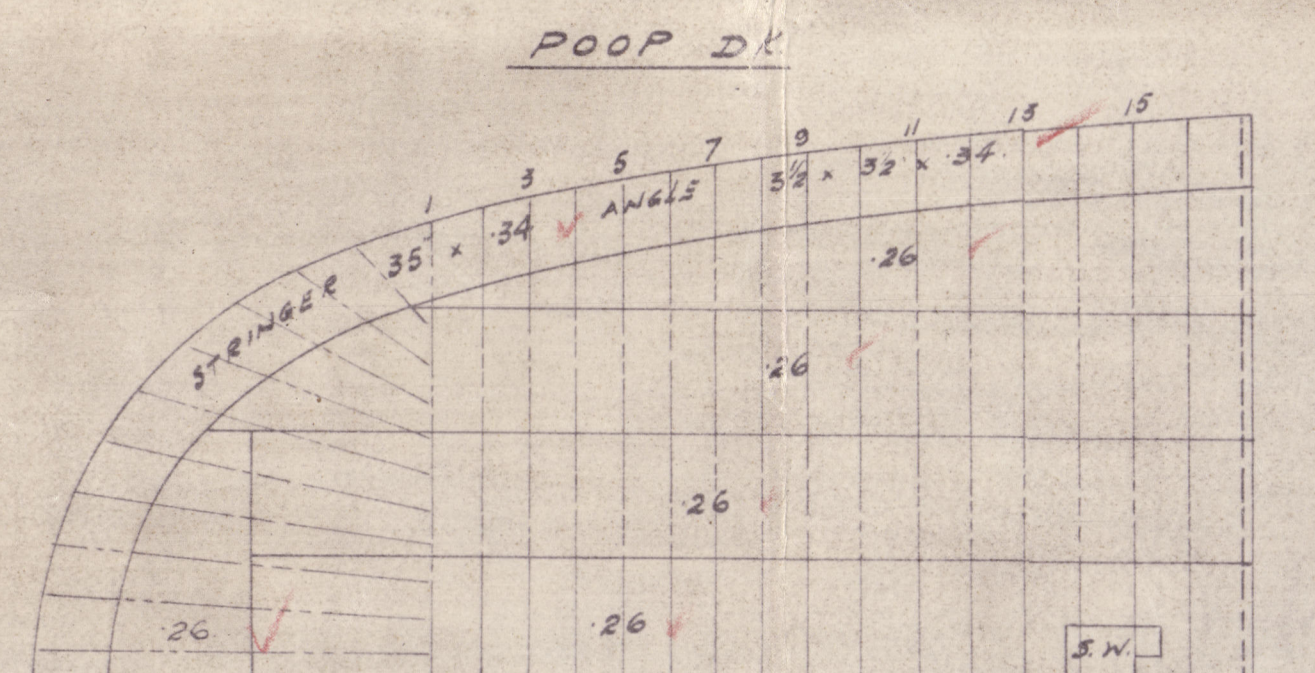
18/10/87

[illegible]

PROFILE & DECK PLANS. N° 235.

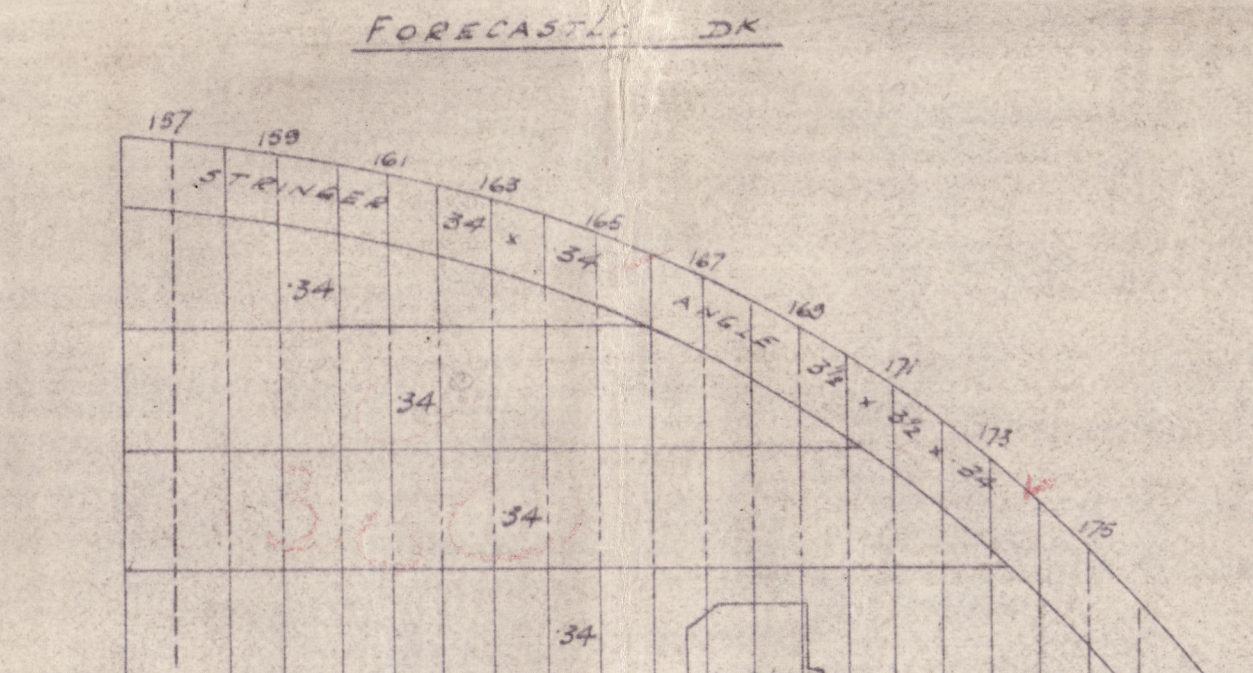
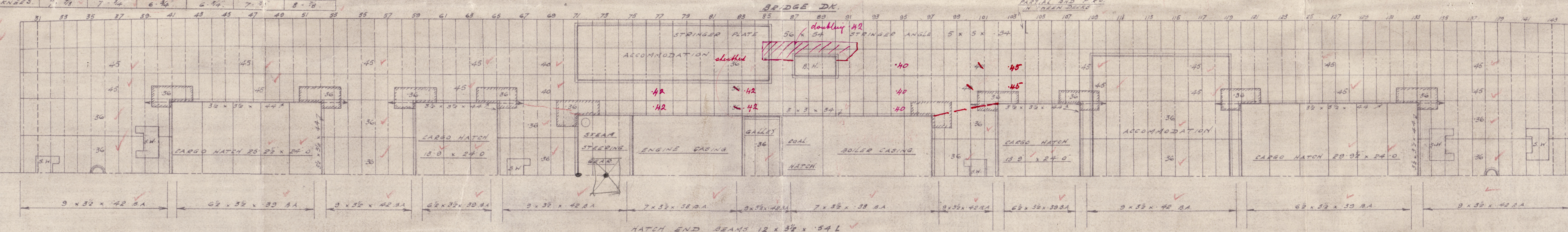
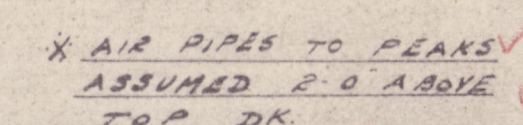
LENGTH B.P. 400' 0" BREADTH EXT. 54' 0" DEPTH M^{LD} TO UPPER DK. 29' 0"
CLASS 100 A.I. LLOYDS " " " LOWER " 21' 0"

SCALE $\frac{1}{8}'' = 1 \text{ FT.}$

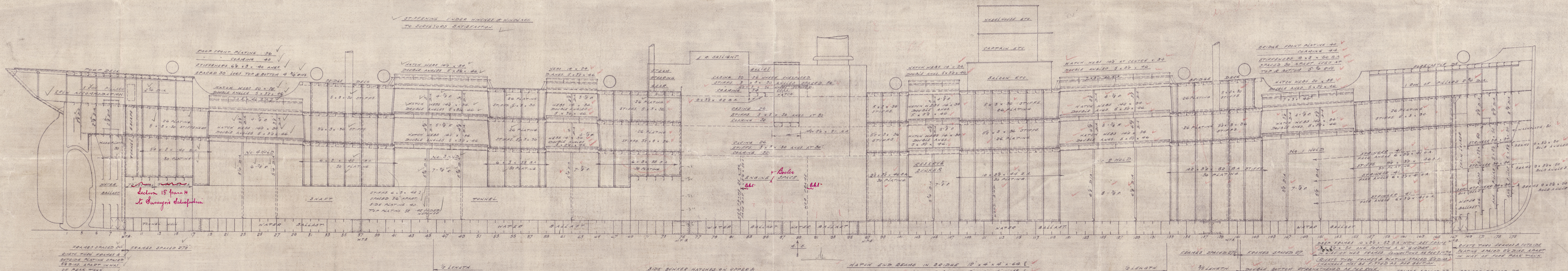


BEAMS 7 x 3 x .41 B.A.
KNEES 2 1/2" x .40

POOP DECK SHEATHED WITH 5' x 2 1/2' P.P.



BEAMS $8\frac{1}{2} \times 3\frac{1}{2} \times 45$ B.A. $6\frac{1}{2} \times 3 \times 44$ B.A.



Section 18 para H
to Surgeon's Satisfaction

SIDE BUNKER HATCHES ON UPPER & LONGER DECKS TO BE ARRANGED

UPPER DECK

Sectional area of decks in way of same to be maintained to

HATCH END BEAMS IN BRIDGE 12' x 4' x 4' 64' ✓

✓ CLEAR OF BRIDGE 12' x 4' x 4' 48' ✓

PARTIAL SHD. BAS.

HATCH END BEAMS IN BRIDGE 12" x 4" x 4" x 64 [
CLEAR OF BRIDGE 12" x 4" x 4" x 48 [

3/5 LENGTH. DOUBLE BOTTOM STRENGTHENED AS PER SEE SEPARATE PLAN.

FRAMES SPACED 27' FRAMES SPACED 24'



Escapa latohes See Section 25 para 11b

LOWER DECK

HATCH END BEAMS $12 \times 4 \times 4 \times 68$ [

17.10.27

A circular purple ink stamp from Golden Age Engineering & Sintering Co., Ltd. The stamp contains the following handwritten information:

- Top: #49/235.
- Left: Item No.
- Center: 13.10.27
- Bottom: Date.
- Bottom right: A signature.

 The outer ring of the stamp reads "GOLDEN AGE ENGINEERING & SINTERING CO., LTD." and the bottom center features the word "BLATH." flanked by two stars.

(19)

Cowper S.B.C^o.

No 235-

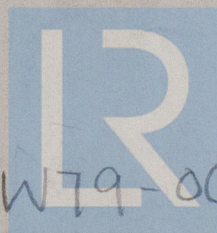
Profile & decks.

(further amended)

S.S. "ISLEWORTH"

NEWCASTLE ON TYNE.

Report No. 89429.



© 2020

Lloyd's Register
Foundation

W79-0051