

# PROFILE & DECK PLANS. S.S. N<sup>o</sup> 235. S.S. "ISLEWORTH."

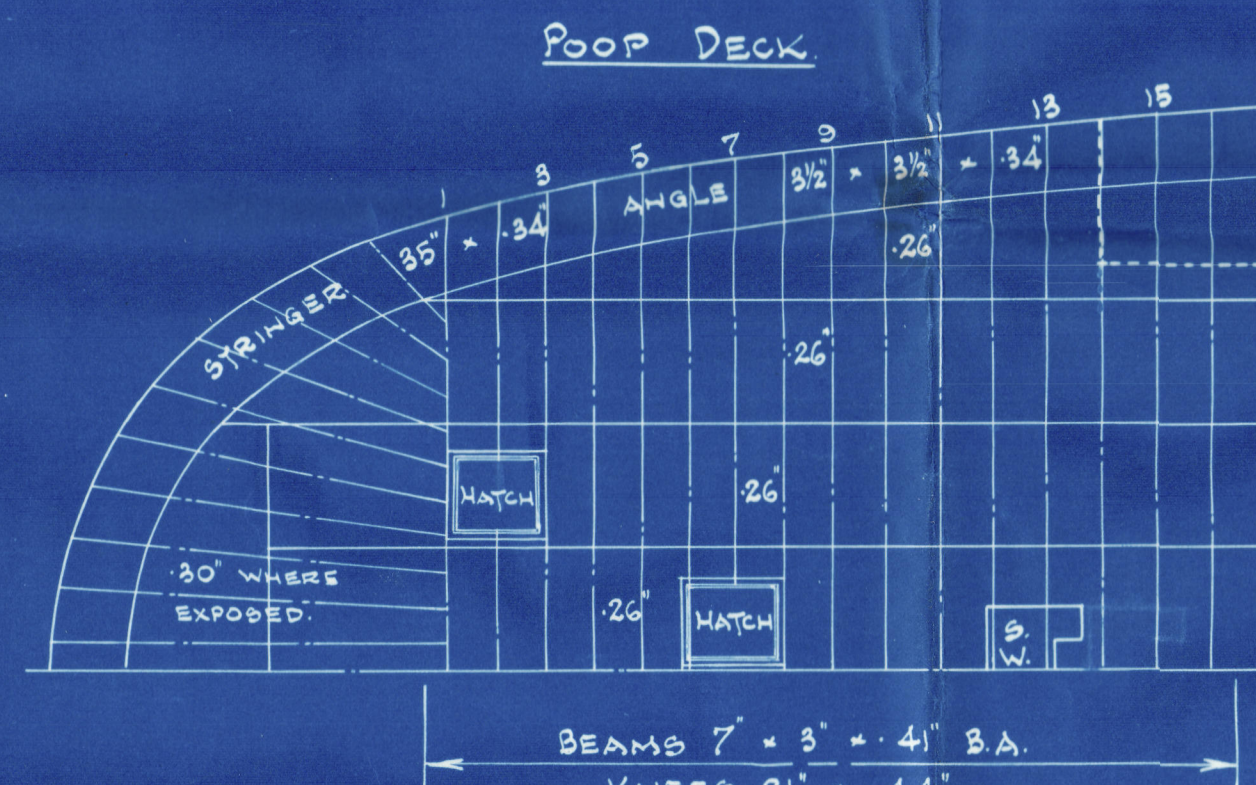
WT BULKHEAD COUNTINGS

| BUD. FRAMES        | N <sup>o</sup> 9   | N <sup>o</sup> 37   | N <sup>o</sup> 75   | N <sup>o</sup> 97   | N <sup>o</sup> 140  | N <sup>o</sup> 167  |
|--------------------|--------------------|---------------------|---------------------|---------------------|---------------------|---------------------|
| TANK TOP ANGLE     | 3 1/2 x 3 1/2 - 49 | 3 1/2 x 3 1/2 - 46  | 3 1/2 x 3 1/2 - 44  | 3 1/2 x 3 1/2 - 45  | 3 1/2 x 3 1/2 - 47  | 3 1/2 x 3 1/2 - 50  |
| UPPER DECK ANGLE   | 3 1/2 x 3 1/2 - 36 | 3 1/2 x 3 1/2 - 36  | 3 1/2 x 3 1/2 - 36  | 3 1/2 x 3 1/2 - 36  | 3 1/2 x 3 1/2 - 36  | 3 1/2 x 3 1/2 - 36  |
| LOWER DECK ANGLE   | 3 1/2 x 3 1/2 - 40 | 3 1/2 x 3 1/2 - 40  | 3 1/2 x 3 1/2 - 40  | 3 1/2 x 3 1/2 - 40  | 3 1/2 x 3 1/2 - 40  | 3 1/2 x 3 1/2 - 40  |
| PLATING EX. COMING | 35 - 20            | 35 - 20             | 35 - 20             | 35 - 20             | 35 - 20             | 35 - 20             |
| COAMING            | 40                 | 40                  | 40                  | 40                  | 40                  | 40                  |
| T.W. DECK STIFFER  | 4 1/2 x 3 1/2 - 34 | 4 1/2 x 3 1/2 - 34  | 4 1/2 x 3 1/2 - 34  | 4 1/2 x 3 1/2 - 34  | 4 1/2 x 3 1/2 - 34  | 4 1/2 x 3 1/2 - 34  |
| LOWER STIFFERS     | 11 x 3 1/2 - 50    | 10 1/2 x 3 1/2 - 52 | 10 1/2 x 3 1/2 - 52 | 10 1/2 x 3 1/2 - 52 | 10 1/2 x 3 1/2 - 52 | 10 1/2 x 3 1/2 - 52 |
| SPACING            | 24                 | 30                  | 30                  | 30                  | 30                  | 24                  |
| KNEES              | 3 1/2 x 3 1/2 - 34 | 3 1/2 x 3 1/2 - 34  | 3 1/2 x 3 1/2 - 34  | 3 1/2 x 3 1/2 - 34  | 3 1/2 x 3 1/2 - 34  | 3 1/2 x 3 1/2 - 34  |
| RIVETS IN KNEES    | 7 - 7/8            | 7 - 3/4             | 6 - 3/4             | 7 - 3/4             | 7 - 7/8             | 7 - 3/4             |

BULKHEAD LINGER PLATED  
INCREASED AS PER SEC 17 PAR. 4 (C)

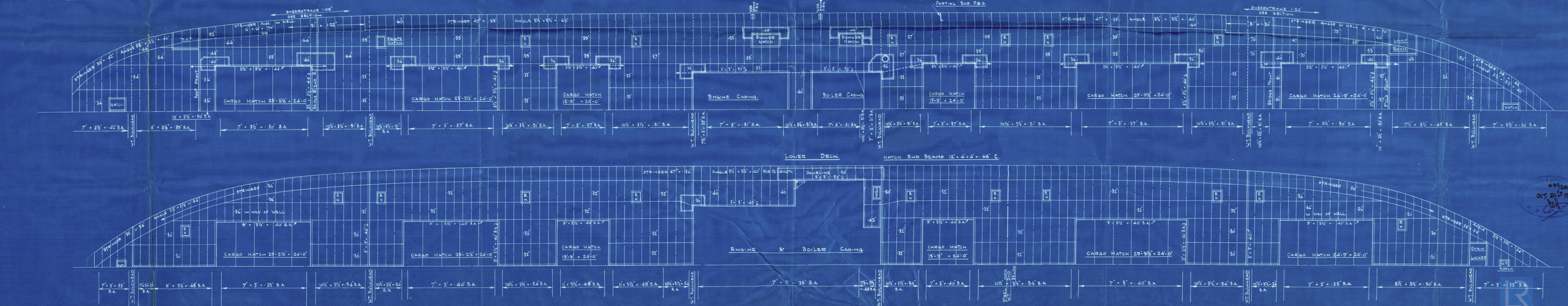
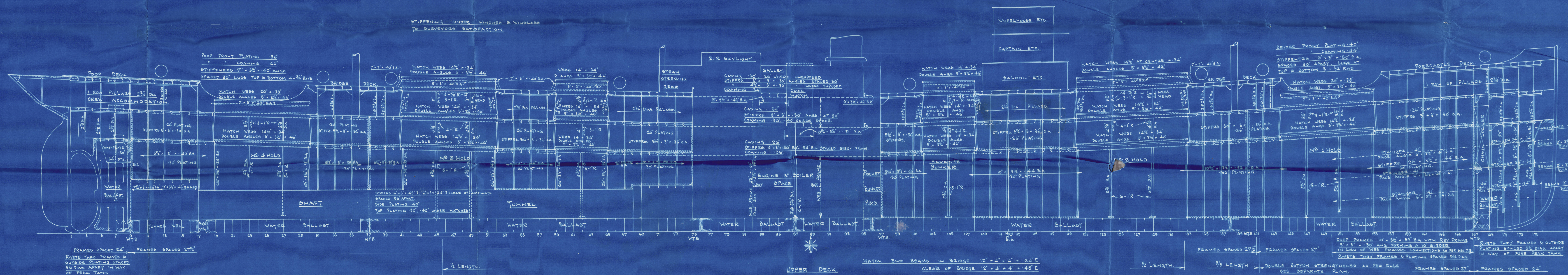
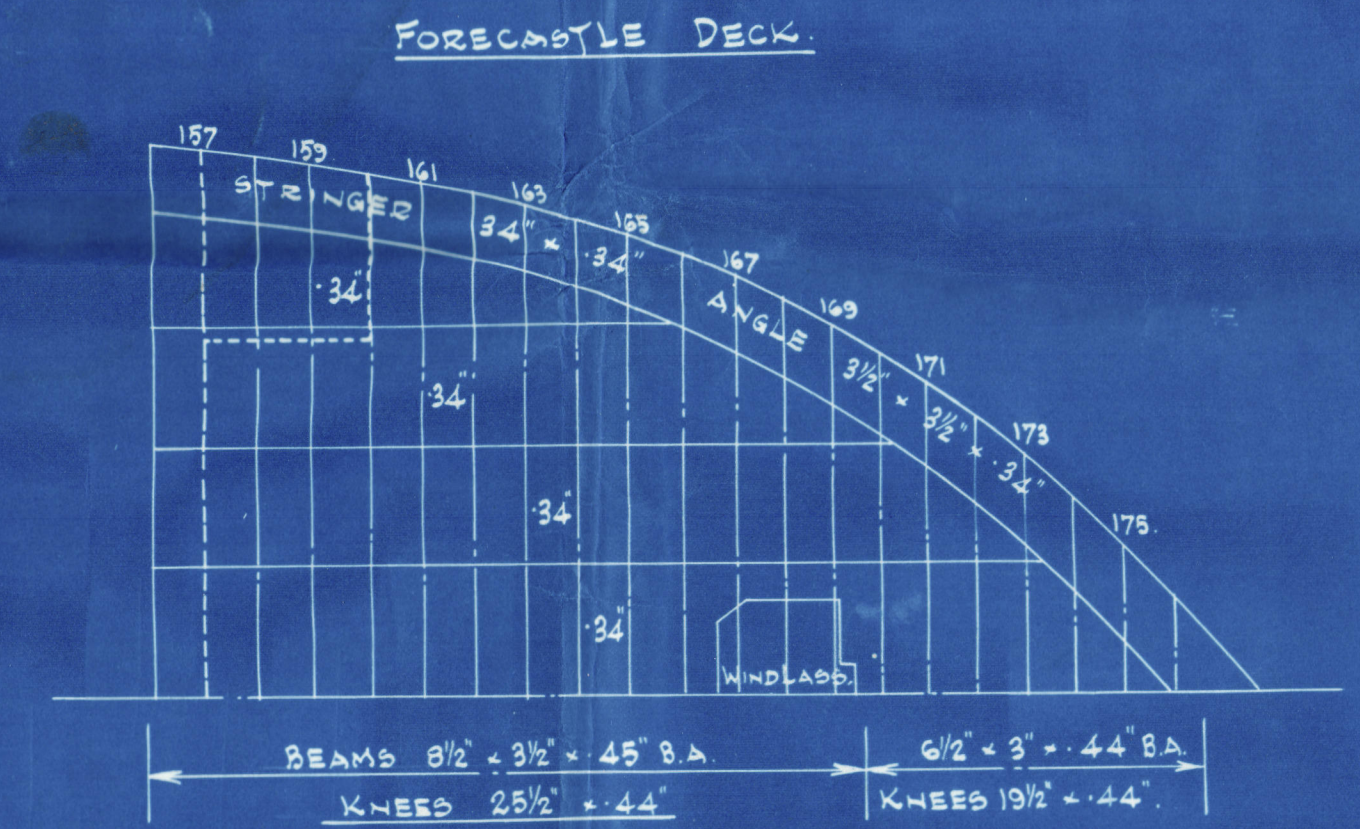
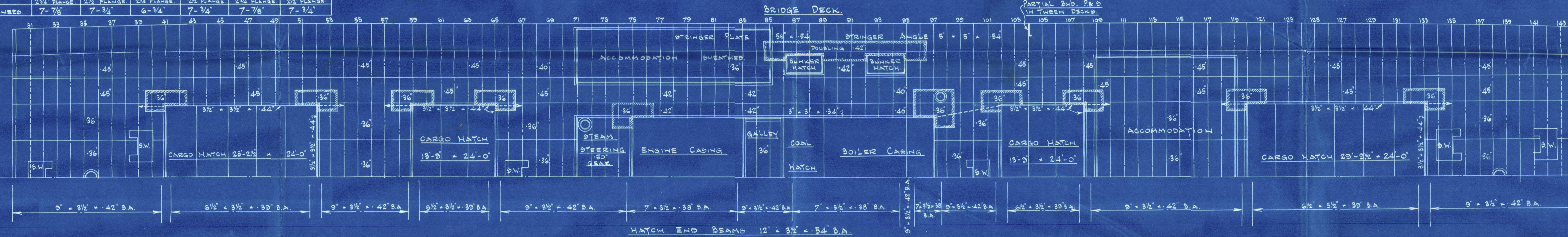
LENGTH B.P. 400'-0" BREADTH EXT. 54'-0" DEPTH M.B. TO UPPER DK. 29'-0"  
CLASS 100 A.I. LLOYD'S

SCALE 1/8" = 1 FOOT



POOP DECK SHEATHED WITH 5' x 2 1/2" P.P.

AS AIR PIPES TO PEAKS  
TAKEN AT 2'0" ABOVE  
TOP DECK



88% 286  
OCT. 26th 1928  
J.B.



(24)

Cowpen. D.D & S.B. CO. L<sup>d</sup>

---

No. 235.

S. S. "Isleworth."

---

Profile & decks. (as built)

---

S. S. 'ISLEWORTH'

NEWCASTLE ON TYNE.

Report No. 83429.

---



© 2020

Lloyd's Register

W79-005' Foundation