

No 8

STEEL DONKEY BOILER

FOR

BUILDERS No 384&5

DIA. 9'-6" x 10'-0" LONG.

WORKING PRESSURE 120 LBS.

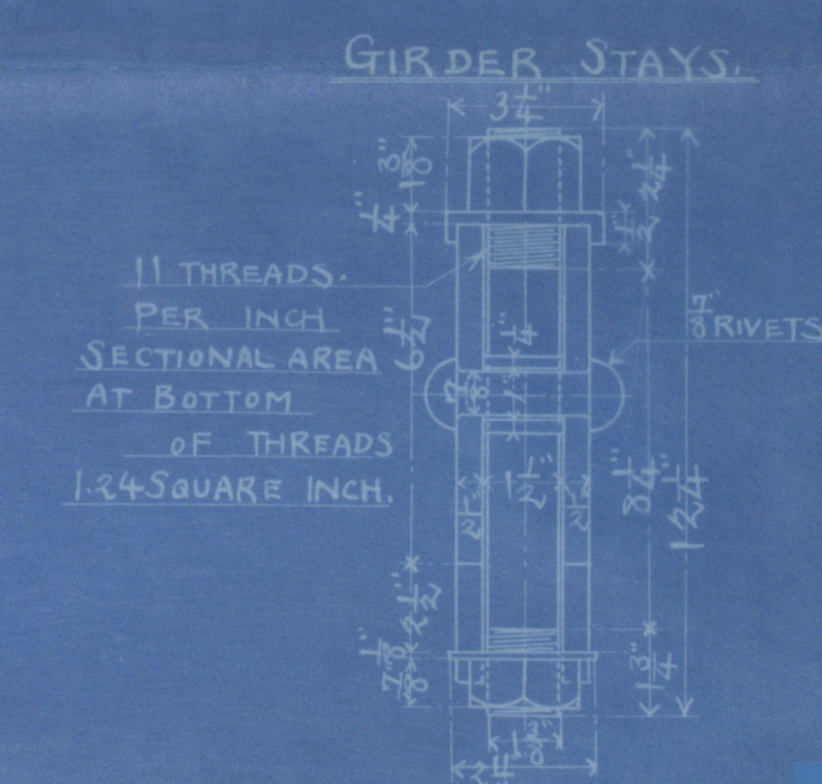
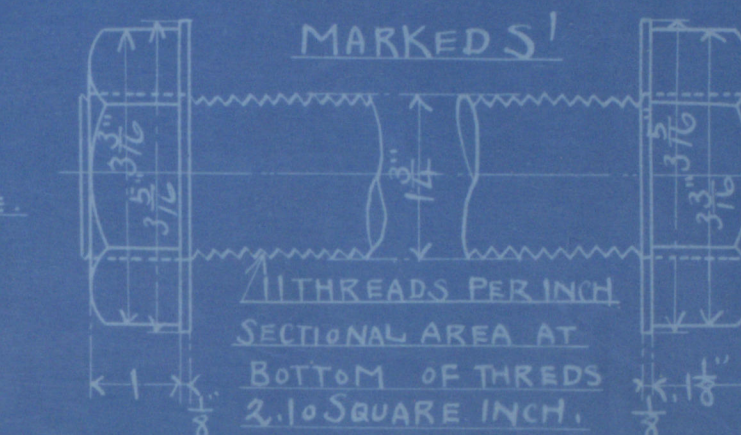
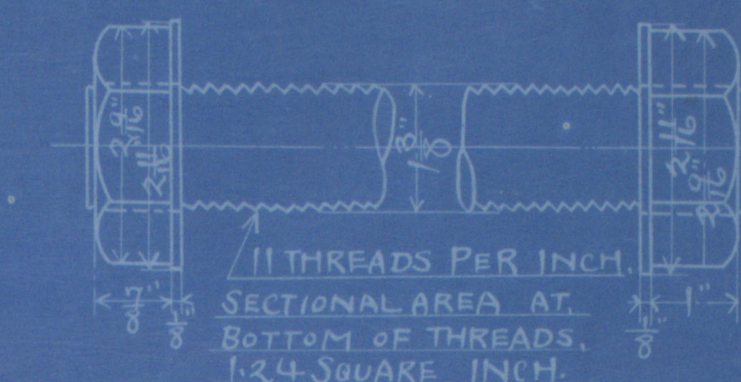
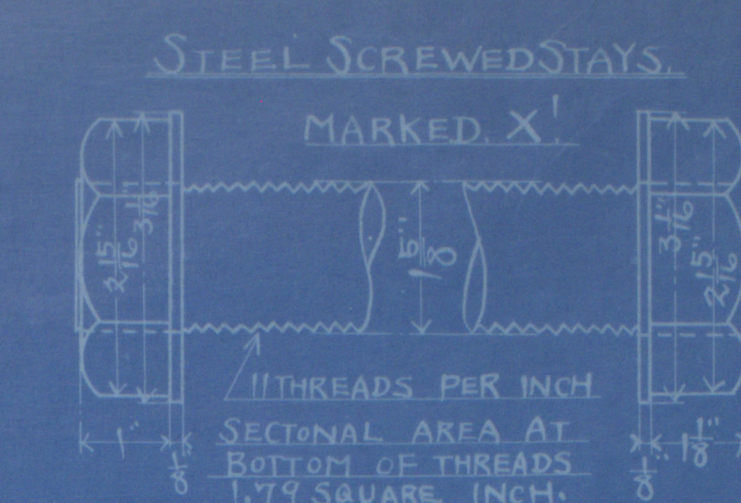
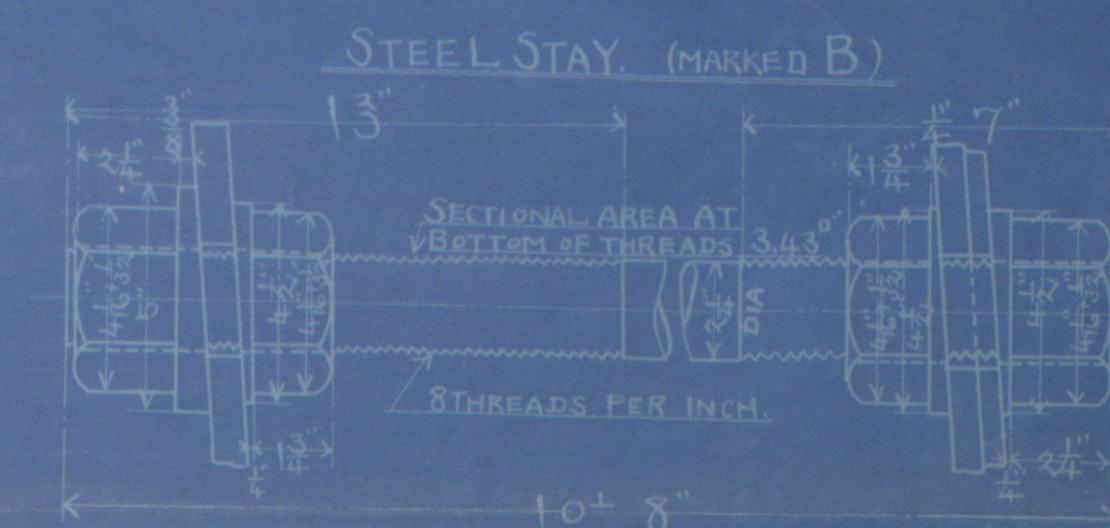
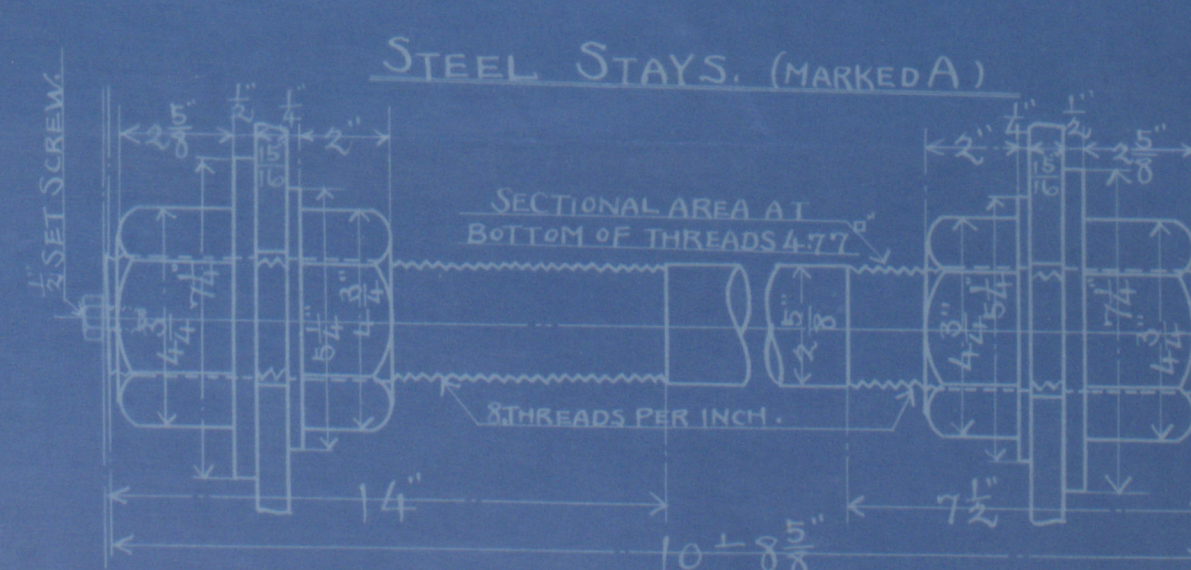
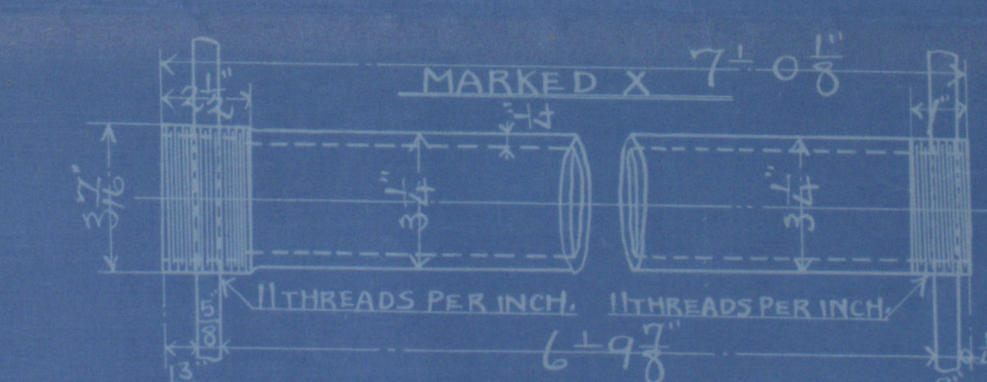
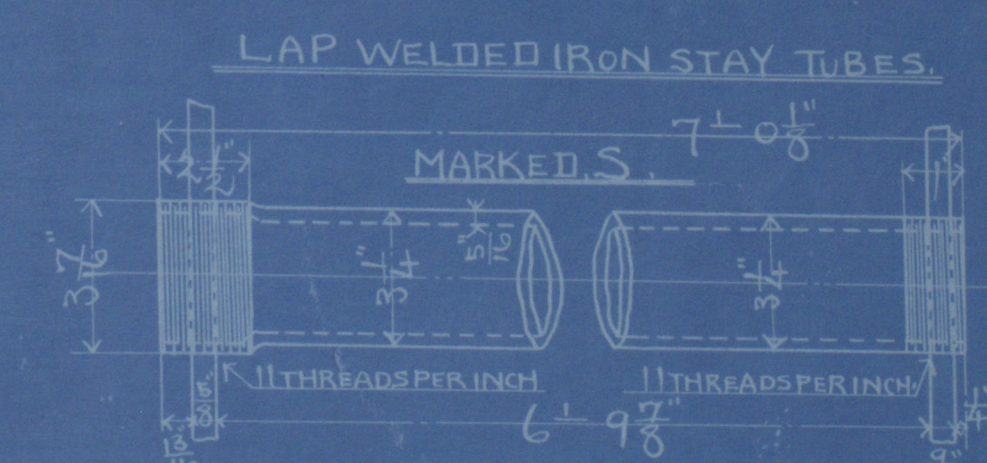
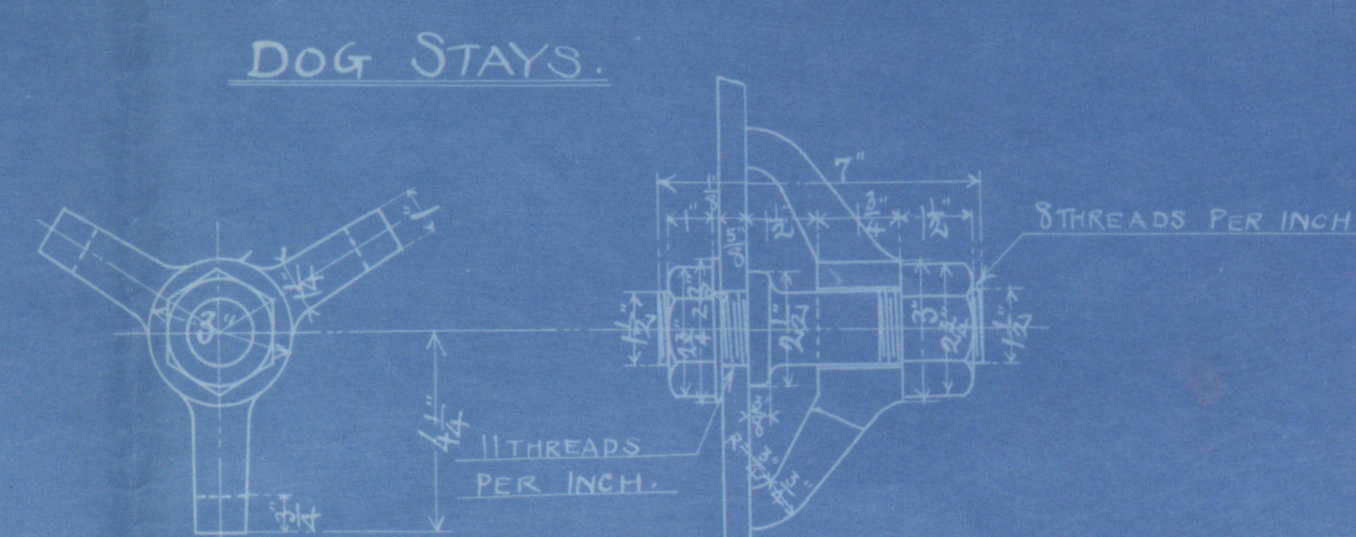
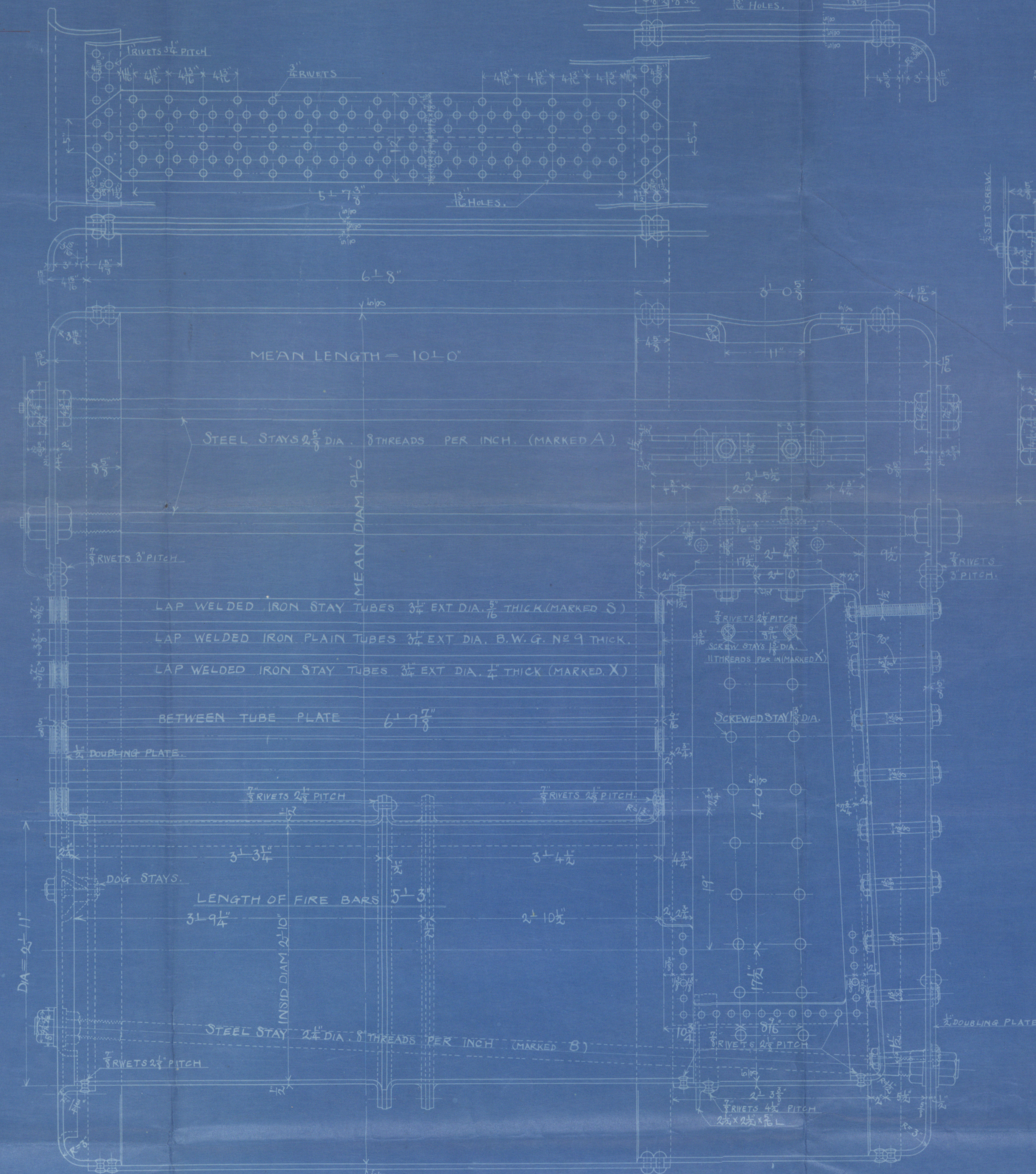
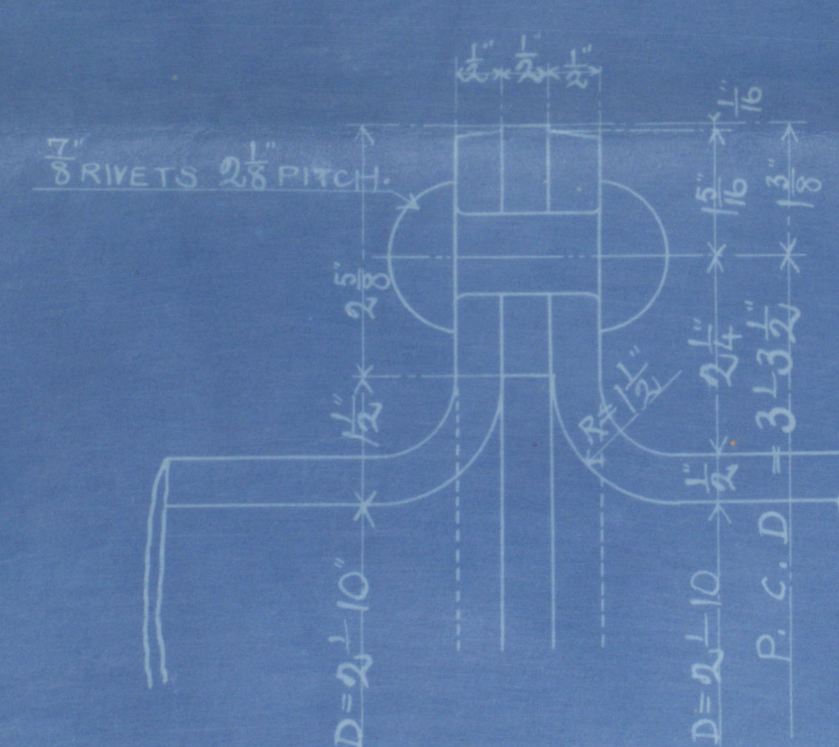
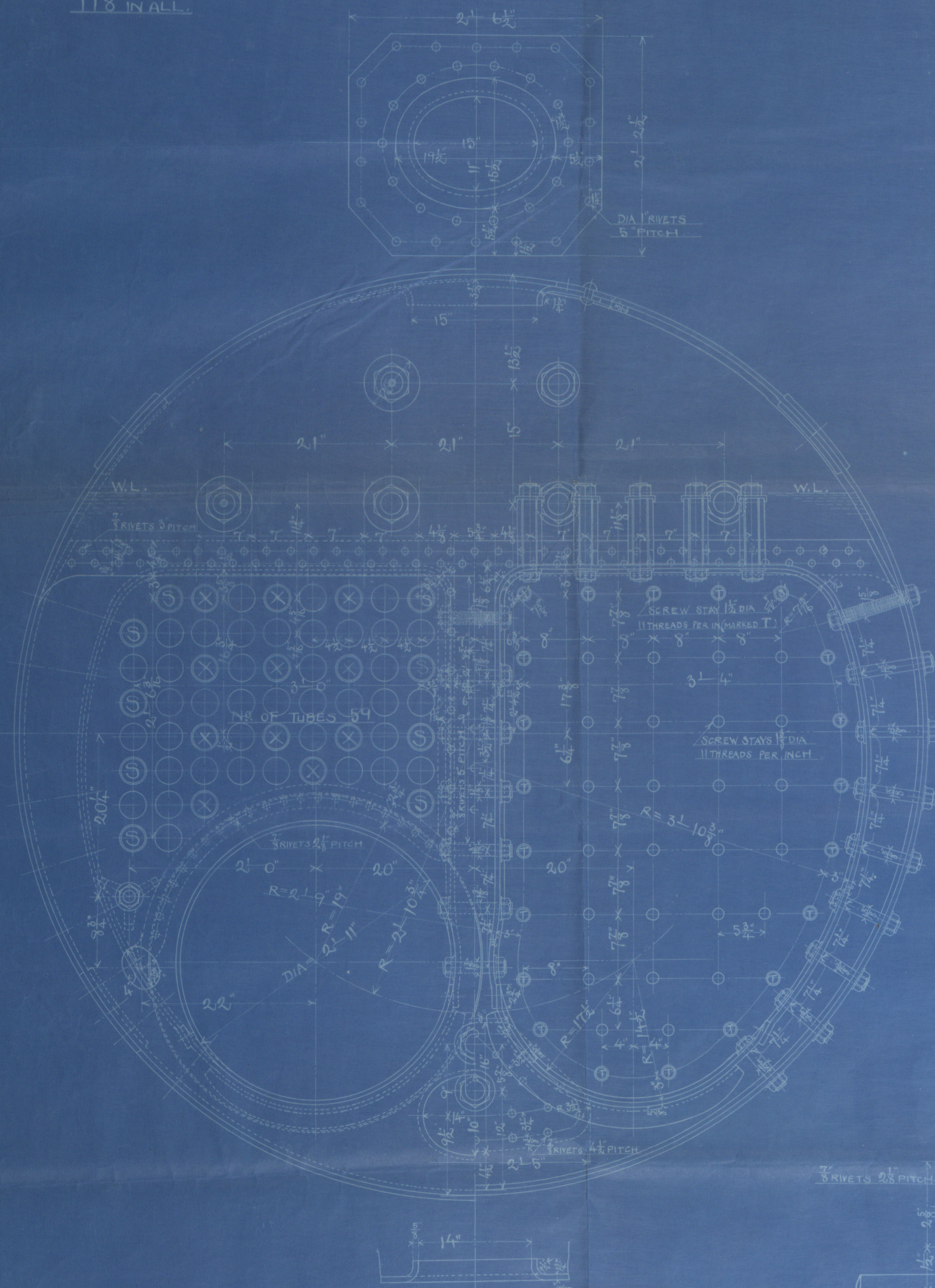
SCALE 1/2 INCH TO A FOOT.



HEATING SURFACES	
TUBES	682.4 SQ. FT.
FLUES	61.38 "
FIRE BOXES	27.11 "
BACK TUBE PLATES	10.71 "
TOTAL	841.61 "
GRATE AREA	29.75 "
RATIO OF H/G	28.29
SECTIONAL AREA OF TUBES	5.27 SQ. FT.
SEC. AREA OF TUBES	1
GRATE AREA	5.65

TUBES
78 IRON PLAIN TUBES 3/4" DIA. No 9 BWG THICK.
18 IRON STAY TUBES 3/4" DIA. 1/2" THICK MARKED S.
22 IRON STAY TUBES 3/4" DIA. 1/2" THICK MARKED X.
118 IN ALL.

REFINED DRAWING



川崎造船所設計部
部長 工事部 384-5
課長 船務部 8
主任 船務部 5412
製図 田 安

Kawasaki No. 384-5.

Steel Donkey Boiler.

S. S. Siam Marn K. 384 $\frac{7}{8}$

Robt Rep to 1916 1922



RETAIN



© 2021

Lloyd's Register

W797 0133 Foundation