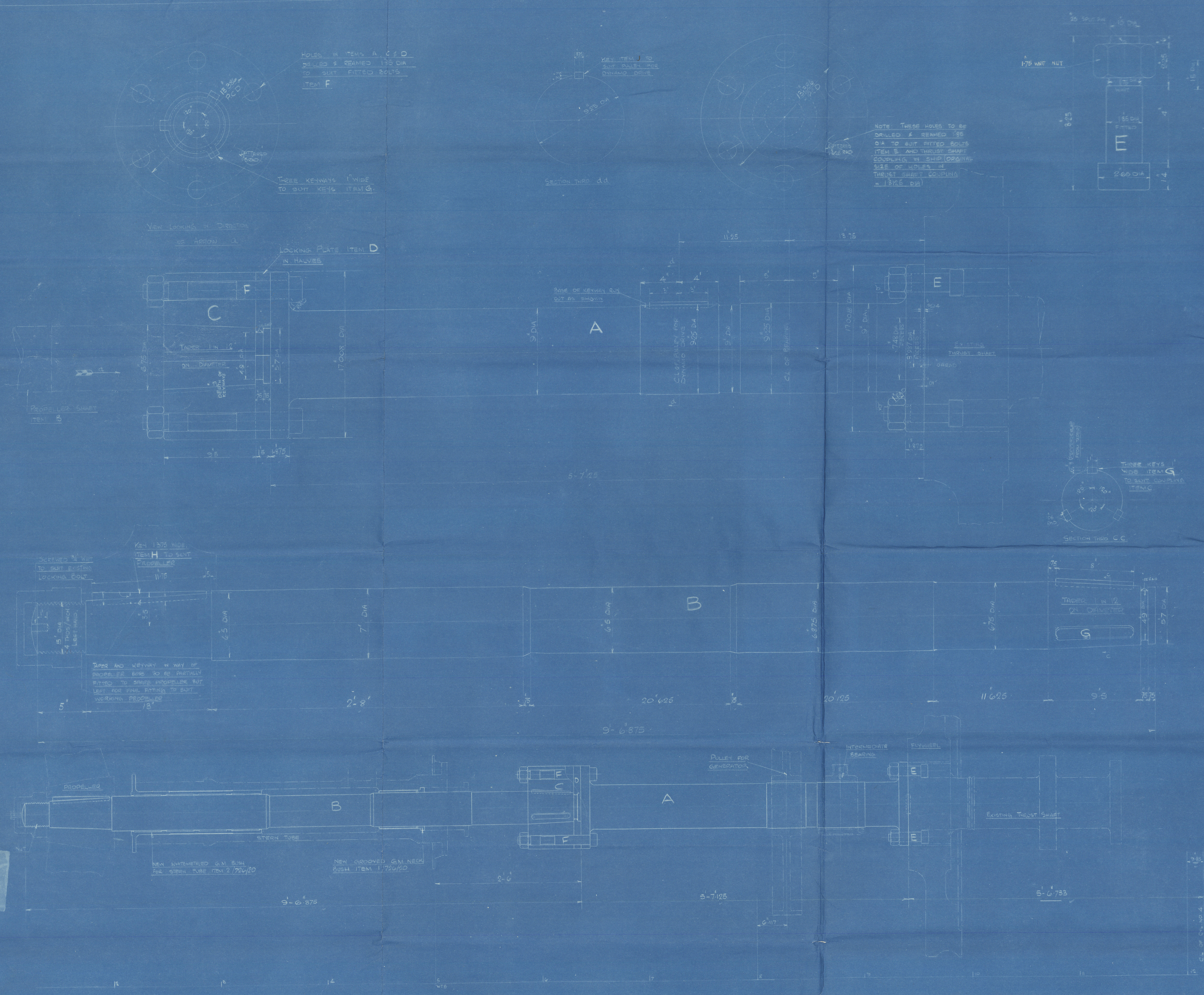


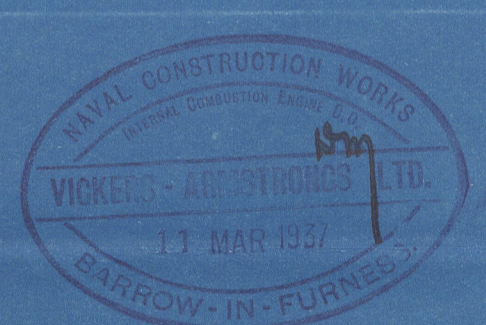
17 MAR 1937



ITEM	DESCRIPTION	QUALITY	MARK	MATERIAL	NO. OFF.	REMARKS
1	INTERMEDIATE SHAFT	STEEL	1	DRP ON SK NO 1000 (Framing)		
2	PROPELLER SHAFT	STEEL	1	DRP ON SK NO 1000 (Framing)		
3	LOOSE COUPLING	STEEL	1	DRP ON SK NO 1000 (Framing)		
4	LOCKING PLATE	STEEL	1	IN HALVES DRP ON SK NO 1000 (Framing)		
5	FITTED BOLT	STEEL	6	BAR WITH NUTS & SPLIT PIN		
6	KEY FOR COUPLING	STEEL	3	BAR		
7	KEY FOR PROPELLER	STEEL	1	BAR		
8	KEY FOR PULLEY	STEEL	1	BAR		

ITEMS MARKED THUS MACHINED ALL OVER REMAINDER WHERE
TIMED RED
MATERIAL TESTS TO LLOYD'S REQUIREMENTS (28-32 TONS PER SQ IN TENSILE)
QUANTITIES MARKED ARE TOTAL REQUIRED

DRAWN BY	W.P.
CHECKED BY	
ISSUED BY	



ORDER NO
2552A

ARRANGEMENT & DETAILS OF SHAFTING FOR M.V. "SHOAL FISHER"

SCALE - 1/2" = 1'00"

16-3-37

NOTED AS APPROVED BY LLOYD'S
SEE LETTER DATED 19TH MARCH 1937

DRAWING NO 726/18

M/S "SHOAL
FISHER"

(VAN 726)

REPLACE

TAIL-SHAFT
+
COUPLING

appd 17/3/31

0F00-18M



© 2021

Lloyd's Register
Foundation