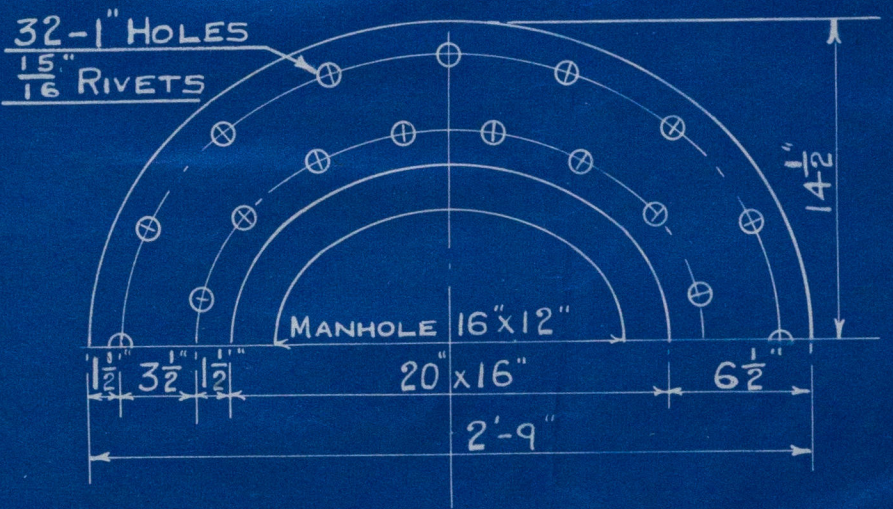
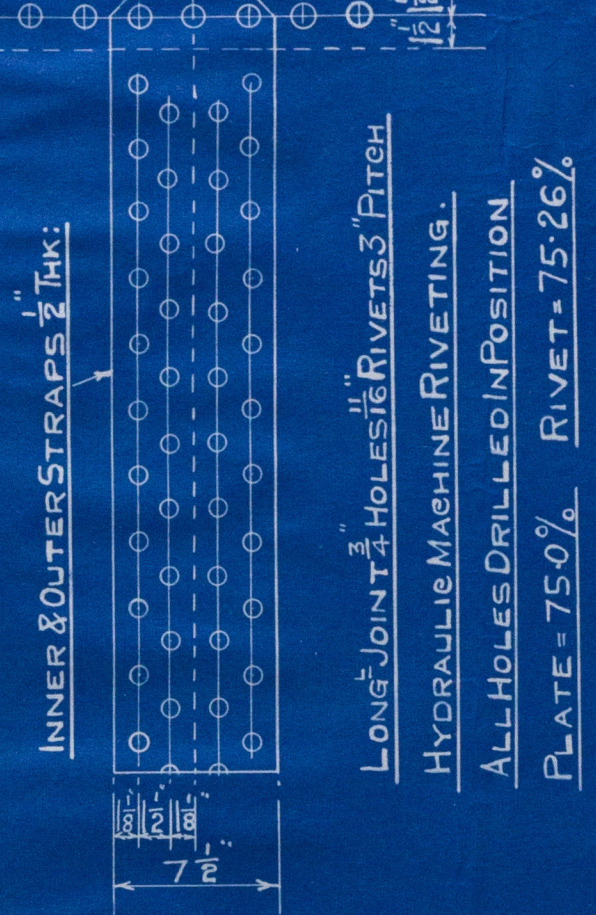


CIR: JOINT 1" HOLES  $\frac{15}{16}$  RIVETS 2.50 PITCH  
(76 PITCHES) PLATE = 60.0% RIVET = 42.76%



#### LIST OF PLATES

- 2 PLATES 15' 11 1/2" x 6'-0" x 1/8" SHELLS
  - 2 " 6'-0" x 8" x 1/2" OUTER STRAPS
  - 2 " 5'-9 1/2" x 8" x 1/2" INNER STRAPS
  - 1 " 2'-7" x 1'-6 1/2" x 1" MANHOLE DOORS
  - 2 " 2'-10 1/2" x 2'-6 1/2" x 1 1/8" MANHOLE DOUBLINGS
- 1- 8 1/2" x 1'-9 1/2" x 1" MANHOLE DOOR  
DISHED ENDS ORDERED OUTSIDE

#### TENSILE STRENGTH OF MATERIAL

CYL: SHELL PLATE & BUTT STRAPS	30 To 34 TONS/□
END PLATES & MANHOLE DOORS	26 " 30 " "
MANHOLE DOUBLING	27 " 30 " "
STEEL RIVET BARS	26 " 30 " "

ALL TIME & MATERIAL FOR MAKING THESE  
TANKS & FOR MAKING & FITTING PADS TO BE  
CHARGED TO COST NO TK 79.

CAPACITY OF EACH TANK	= 137.5 CUB FT
WORKING PRESSURE	= 213 LBS/□
TEST	" = 370 " "

To LLOYDS SURVEY.

1 TANK THUS.

1 TANK THUS FOR AFT.  
1 To OFF HAND FOR F.

**STARTING AIR  
TANKS.**

SCALE: 1/2" = 1 FOOT.

Nº	DATE
1254	6.3.28
ORDER NO	To RED
395	

SWAN, HUNTER, &  
WICHAM RICHARDSON LTD  
ENGINEERING DEPARTMENT.  
NEPTUNE WORKS.  
NEWCASTLE-ON-TYNE.

2513.

LLOYDS E.R.



Swan Hunter & Wigham  
Richardson

Spare starting air  
tank for

the Motor Vessel  
"British Pluck"

---

Is "BRITISH PLUCK"

NEWCASTLE ON TYNE.

Report No. 84093.

---

W81-0185



© 2021

Lloyd's Register  
Foundation