

STEEL BOILERS

To Lloyd's Requirements for a Working Pressure of 180 Lbs per sq. in.
All plates, rivets, stays & girders of Steel. Tubes of Wrought Iron.

Scale 1" = 1 Foot.

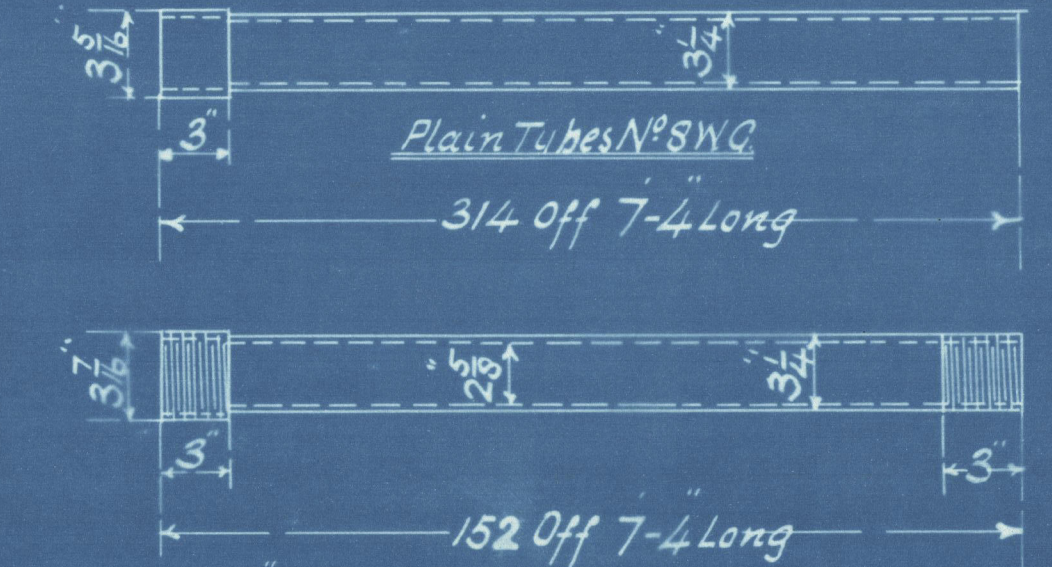
T.H.

ENGINE	DATE
7132 OFF	Intended for Messrs S.P. Austin & Sons S.S.Nº258 Jan 6-1911

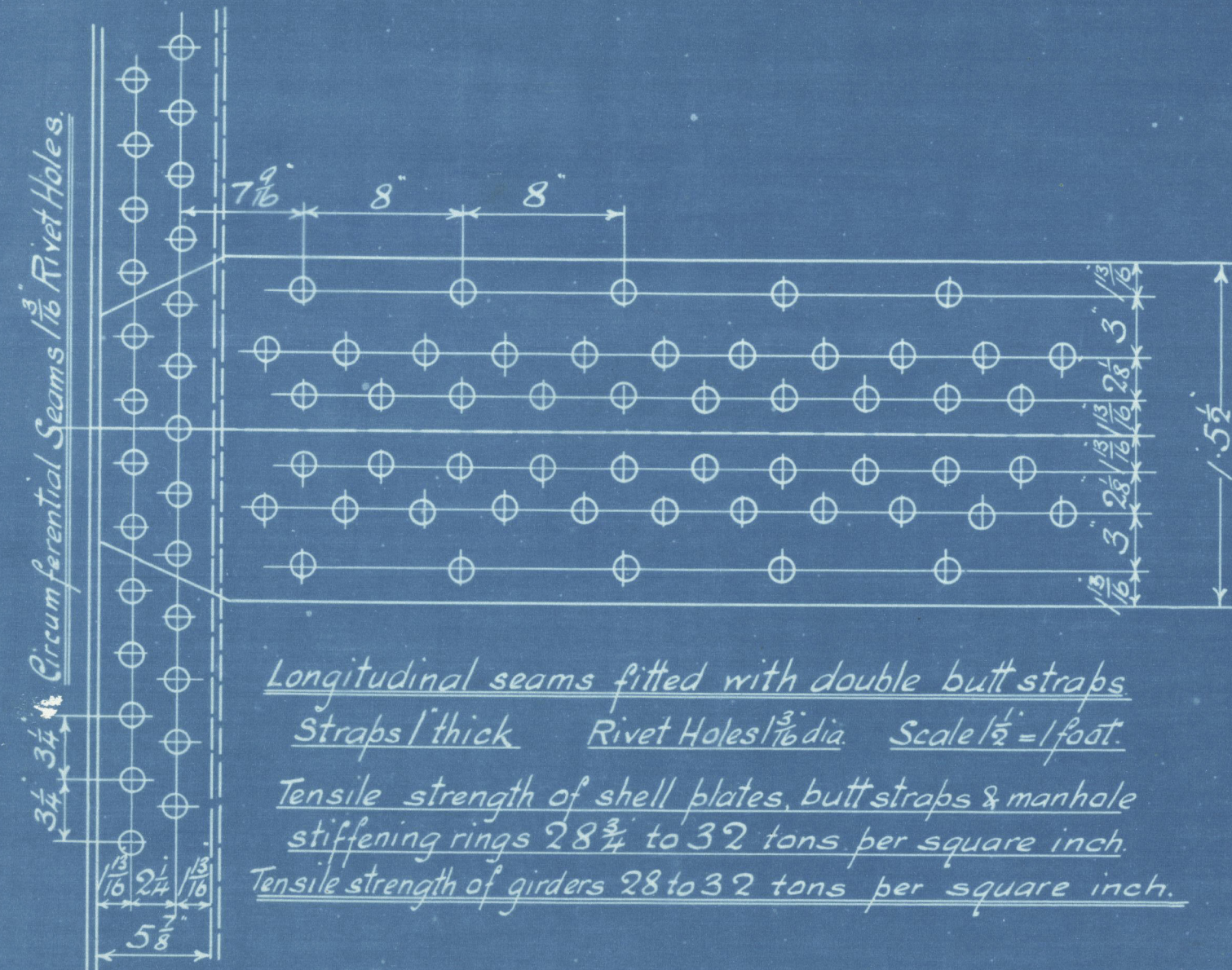
Heating Surface in 2 Boilers = 3446 sq. ft.



THICKNESS	NUMBER	EFF. DIA.	EFF. AREA
1 1/2"	9	16.078	2.031
1 3/8"	9	17.927	2.355
2"	9	18.577	2.69
2 1/2"	6	22.868	4.13
3"	6	27.86	6.1

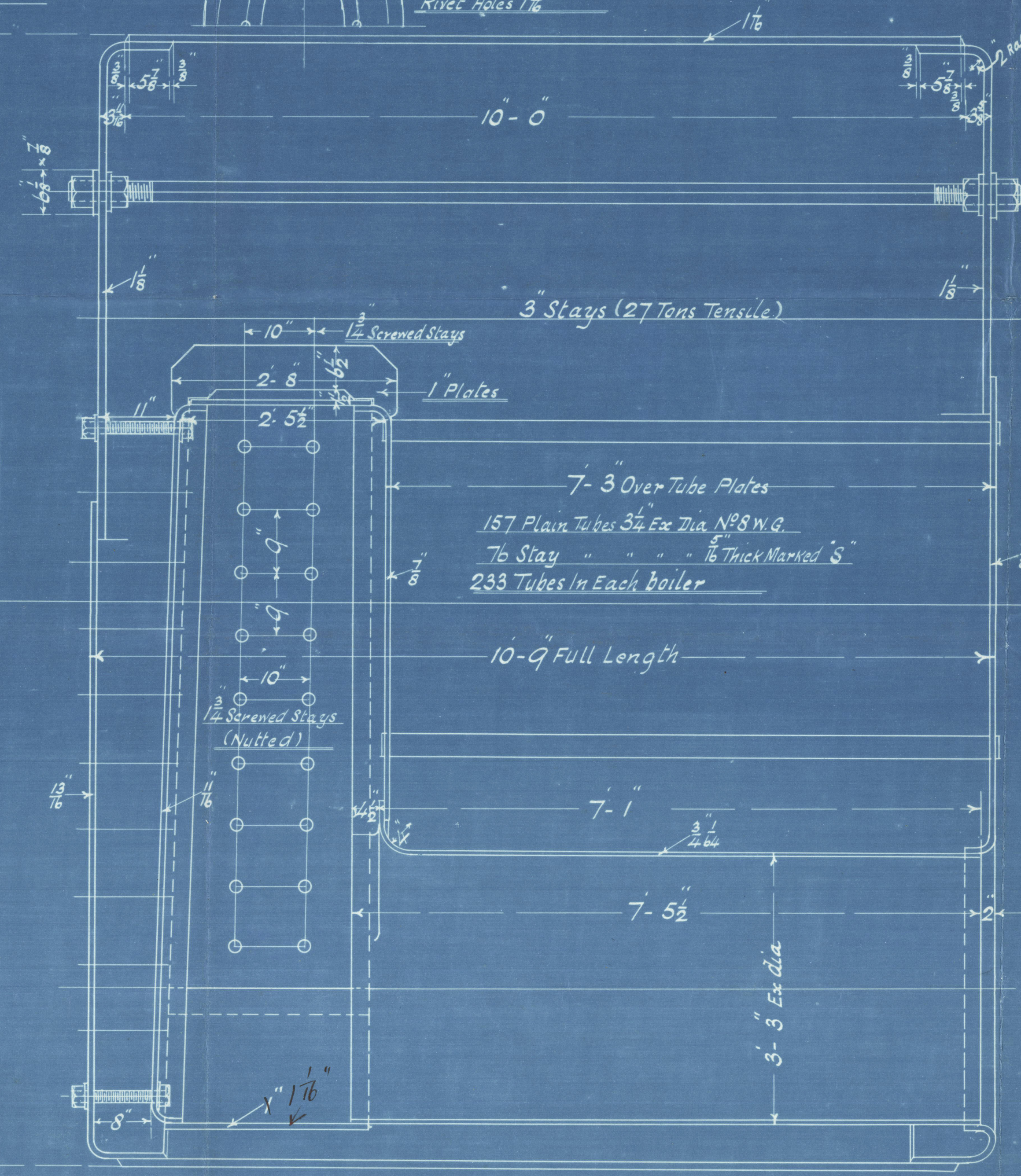
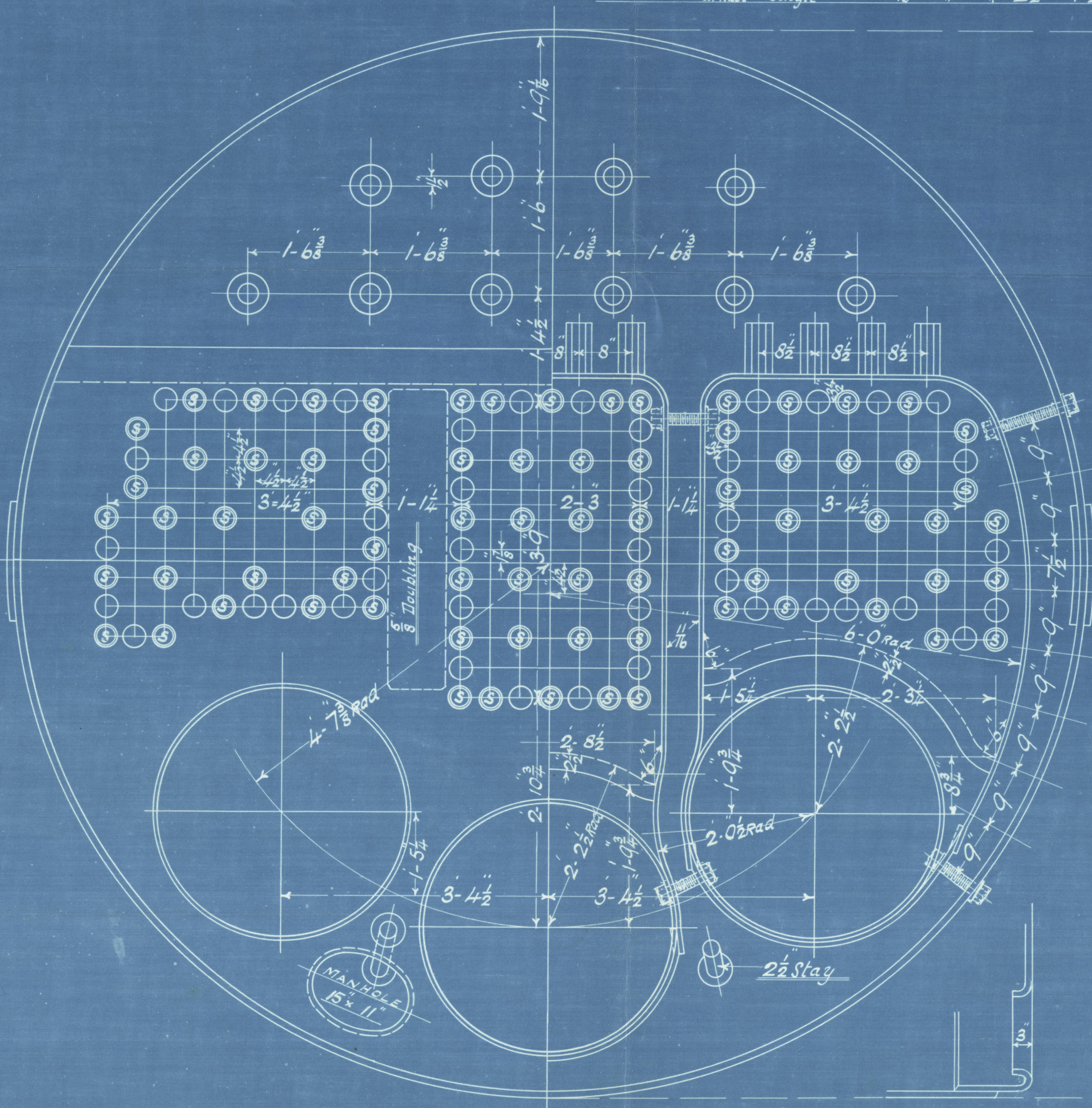


Stay tubes 5/8" Thick, Screwed 10 threads per inch Eff. area 2.255 sq. in.



Longitudinal seams fitted with double butt straps
Straps 1/2" thick Rivet Holes 1 1/2" dia Scale 1/2" = 1 foot.
Tensile strength of shell plates, butt straps & manhole stiffening rings 28 1/2 to 32 tons per square inch.
Tensile strength of girders 28 to 32 tons per square inch.

Riveting
Front & Back Seams double Riveted 1 1/2" Rivet Holes 3 1/2" Pitch 5 1/8" Lap
Com Cham Bott long " " " 2 1/2" " 4" "
" " " Furnace " Single " 1 1/2" " 2 1/2" " 2 1/2" "



J. Dickinson Hous

713

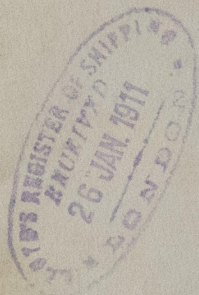
S. P. Austin & Sons

258

180

J/S Pagnon

Sld Rpt 25038.



RETAIN



© 2021

Lloyd's Register
Foundation

W816-0043

W816-0043 $\frac{3}{2}$

© 2021

ENCLOSURE

For Messrs. Lloyd's Surveyors
Lloyd's Register
of Shipping

FROM JOHN DICKINSON & SONS, LTD., SUNDERLAND.

Foundation