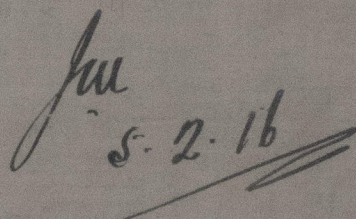
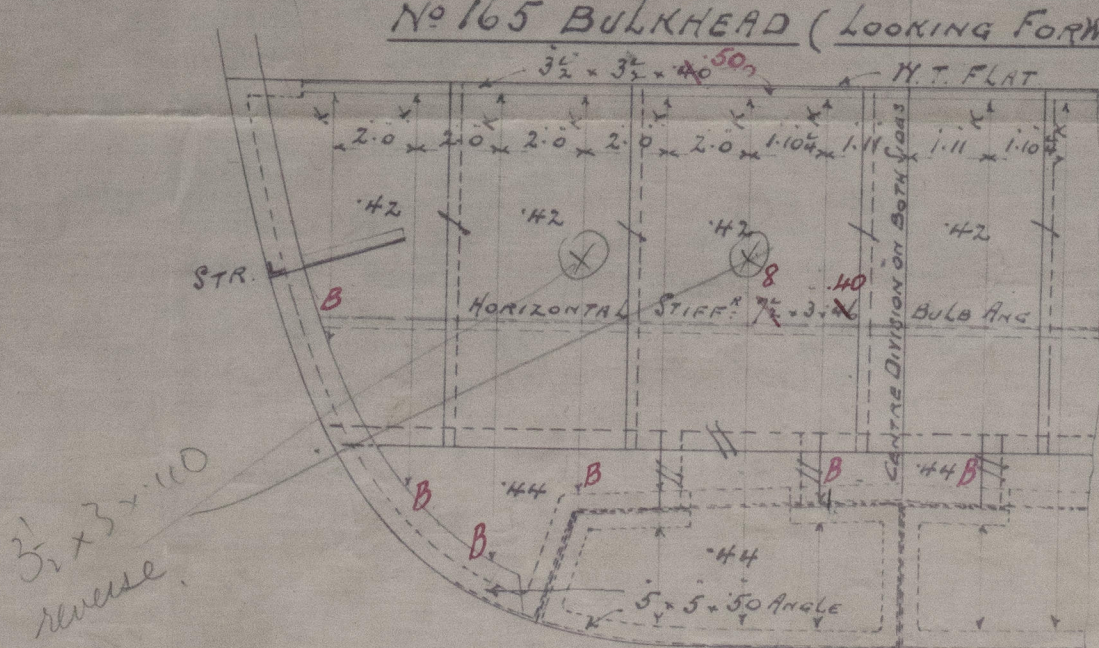


7-2-16

SCALE $\frac{1}{4}$ " = ONE FOOT.

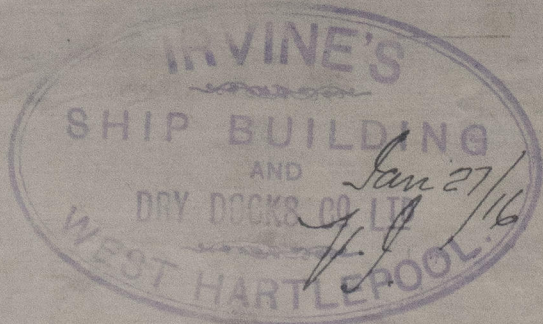


No 165 BULKHEAD (LOOKING FORWARD.)



VERTICAL STIFFENERS $\times \times \times$ BULB ANGLES

RIVETING - $\frac{3}{4}$ RIVS. $3\frac{3}{8}$ PITCH IN PLATING. $\frac{1}{2}$ PITCH IN STIFFERS



Irvine S. B. & D. D. L. L.

S. S. N° 557.

Plan of Deep Tanks, &c
in Fore Hold.

Is. Palmleaf.

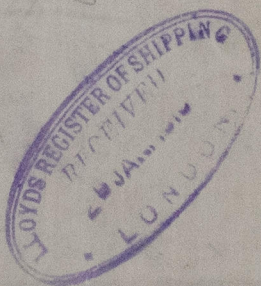
Rm. N° 15318.

WEST HARTLEPOOL

15/1
Fore Hold

See Amended plan of

N° 13



RETAIN

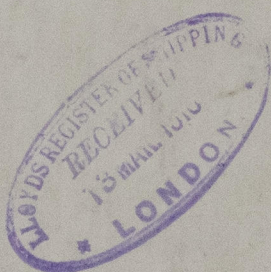


© 2021

Lloyd's Register
Foundation

W816-0076

W816-0076
9600-918M



© 2021

Lloyd's Register
Foundation