

Total Heating Surface = 4691 sq. feet.
Total Grate Surface = 119 sq. feet.

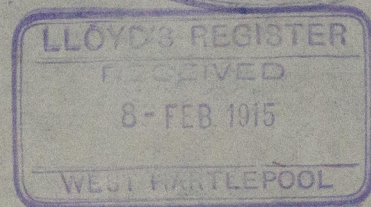
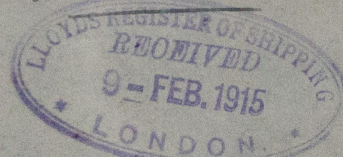
865

W853-0194

875
Certificate No. ~~865~~

The main entry
in
Page 11 No 865

180 LL to P



S.S. Merioneth

WEST HARTLEPOOL report 15251

RETAIN



© 2021

Lloyd's Register
Foundation