

# N<sup>o</sup> 578 MIDSHIP SECTION

PRINCIPAL DIM<sup>s</sup> 255'-0" x 36'-0" M<sup>LD</sup> x 17'-4" M<sup>LD</sup>

SCALE 1/2" = 1 FOOT

Breadth 36  
Depth 17.33  
B x D 623.33  
Length 255  
L x (B x D) 15999  
d = 14.5

Proportions  
D (To Poop Deck) 112 L = 10.06  
D (To Upper) 112 L = 14.7



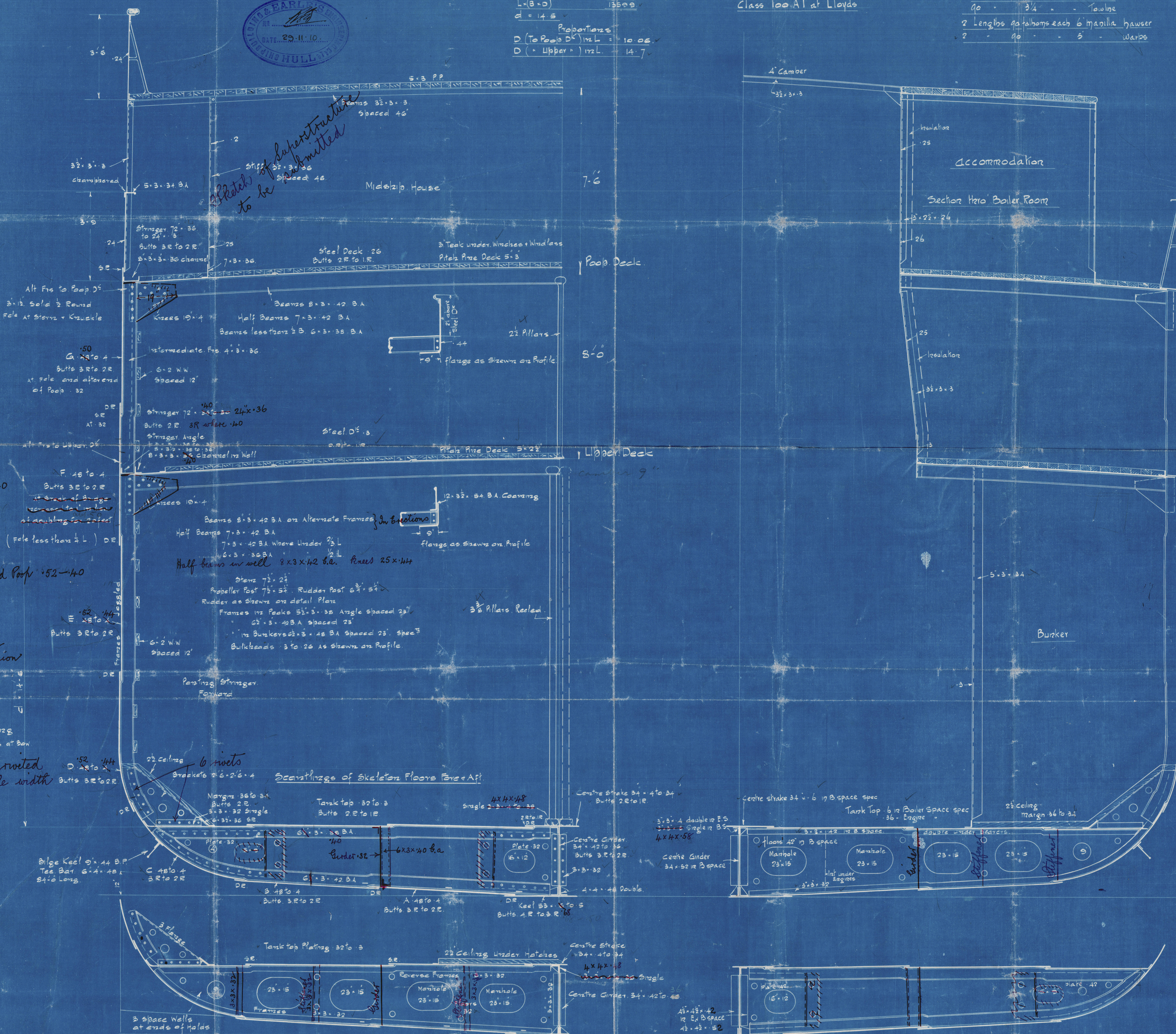
Class 100 A1 at Lloyds

Equipment if under 15,200

2 Bower Anchors 300 cwt each shackleless  
1 Stream 7/4 Ex slack  
1 Kedge 4 1/2  
240 fathoms 1/8 stud chain cables  
7500 3/4 steel wire stream  
90 3/4 Towing  
2 Lengths 90 fathoms each 6 manilla hawser  
2 90 5 Warps

21.11.10  
7.12.10  
Prescribed Particulars  
Sheet at Fore Poop 3'-0  
1/2 L from fore Poop 1-7 1/2  
Sheet at Aft Poop 3'-0  
Length of Poop + Fore 222'-3  
Tonnage Openings in front of Poop  
and in Aft end of Fore  
Tonnage Coeff 67

Equipment Numbers  
B x D x L = 13599  
Poop + Fore 222.3 x 8 x 7.5 = 1334  
House 70 x 6 x 7.5 = 3937  
9'-6 x 13'-0  
Captains house 22 x 45 x 5  
15198  
15280



Beyond Poop 72-40  
Doubled in well as  
shown in profile

Beyond Poop 52-40

Stakes E & D to be  
increased .04 for omission  
of 2 side stiffeners

Ice Plating  
4 Stakes at Bow

Shell butts quadruple riveted  
where stakes are over rule width

Scantlings of Skeleton Floors Fore & Aft

Scantlings of Skeleton Floors in Boiler Space

Scantlings of Solid Floors and Every 3rd Frame  
Stiffeners to be fitted to solid floors as shown

21.11.10

LR

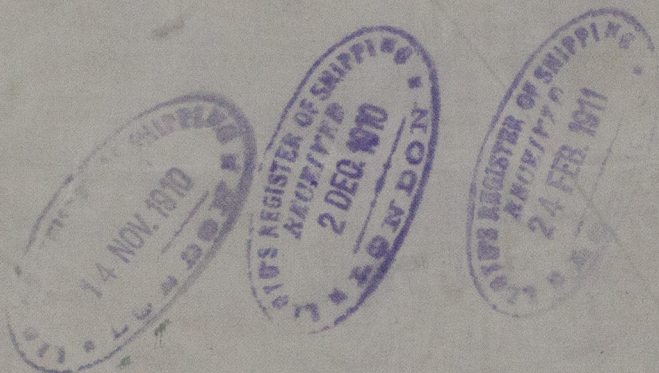
ORAW  
12.11.10



Earle's S. & C. Co.  
No 578.

Lloyd

Midship Section.



J. Harrogate

Hull Rpt No:

24240.

RETAIN



© 2020

Lloyd's Register  
Foundation

W864-0071