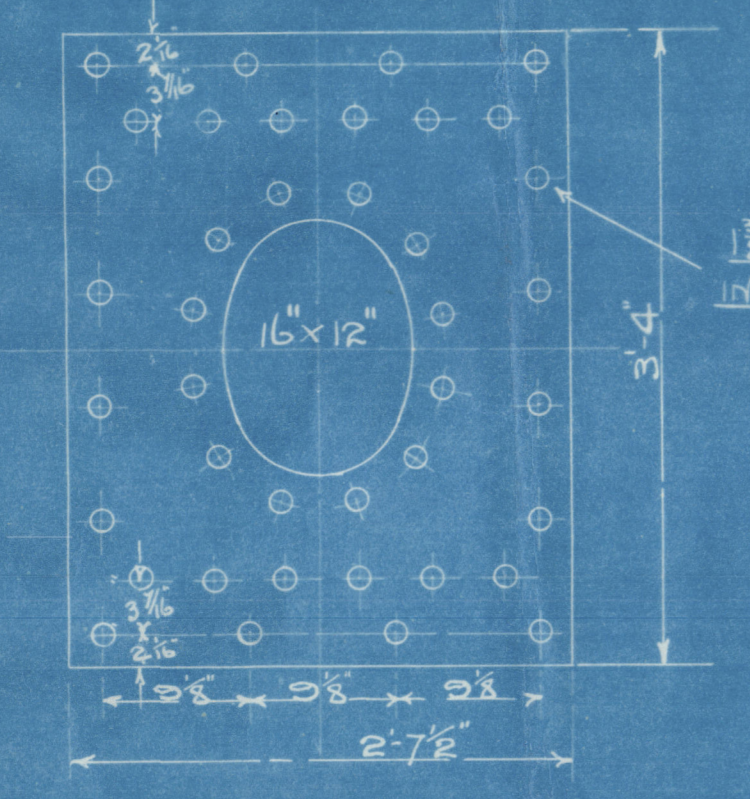


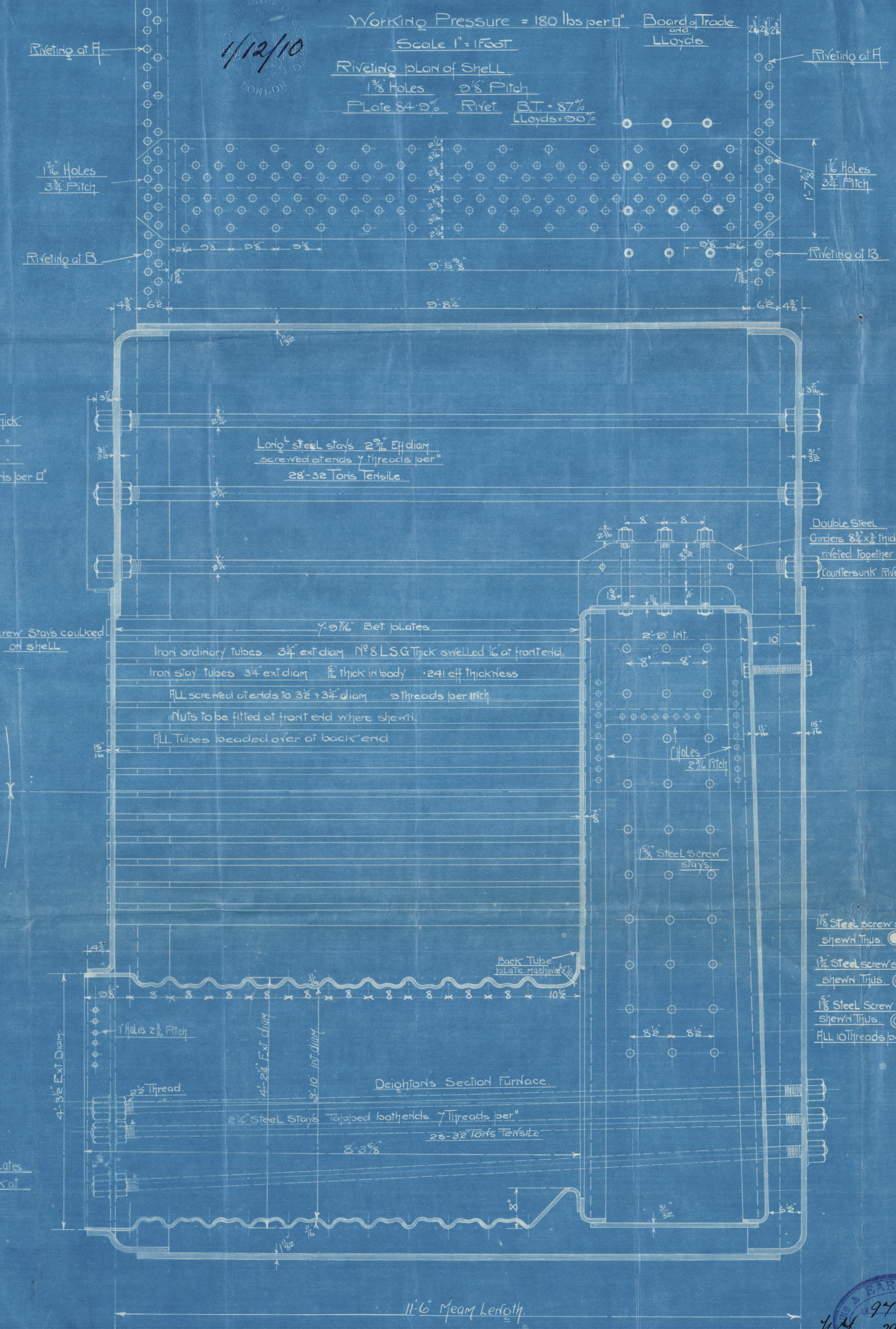
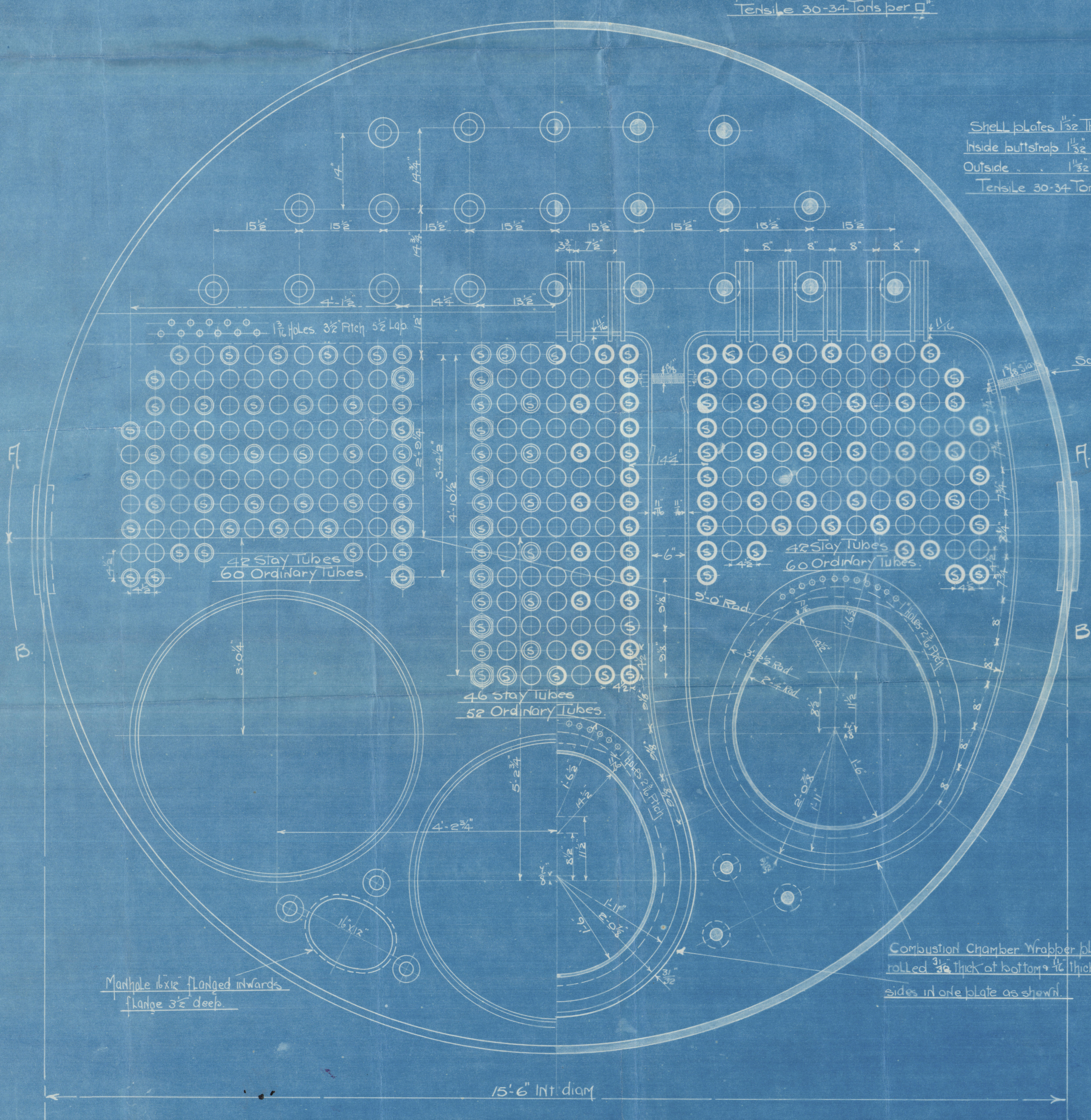
2 STEEL BOILERS N° 57S

Note

All plates, rivets & staybars to be of Siemens Martin Steel.
Shell plates, built up of a manhole doubling to have a tensile of 30-34 Tons per sq.
All rivet holes to be drilled in place after the plates are bent.
All flanged plates to be annealed.
The screw stays are 1 1/2", 1 3/4" & 2" eff. diam. screwed into both plates & nutted as shown, screwed with threads per".
All to be at right angles to C.C. plates. No washers to be fitted under nuts inside C.C.
Manhole in shell 16"x12" with shorter axis long.
Doubling plate 3'-4" x 2'-7 1/2" x 1 1/2" fitted round it.



Doubling plate round manhole 1 1/2" thick
Tensile 30-34 Tons per sq.



DIMENSIONS

	1 Boiler	2 Boiler
LENGTH OF FIRE BARS	6'-0"	6'-0"
AREA OF FIRE GRATE	60 sq ft	120 sq ft
DIAM OF TUBES OUTSIDE	3 3/4"	3 3/4"
LENGTH OF TUBES	7'-0 1/2"	7'-0 1/2"
N° OF TUBES	302	604
AREA THROUGH TUBES	13 sq ft	26 sq ft
SURFACE OF TUBES	2000	4000
TOTAL HEATING SURFACE	2600	5200
WORKING PRESSURE ST. Lloyds	170	170

9450.B
29.11.1910
Lloyd's

N° 57S

1743 B
26.11.1910

Messrs
Barclay & Co. Ltd.

Boulevard No. 548
St. St. Harrogate

No 1810
Lloyd's List
360 lbs.
T.B.
29.6.11

Hull R.R. No.
24241.



W864-0073



© 2020

Lloyd's Register
Foundation