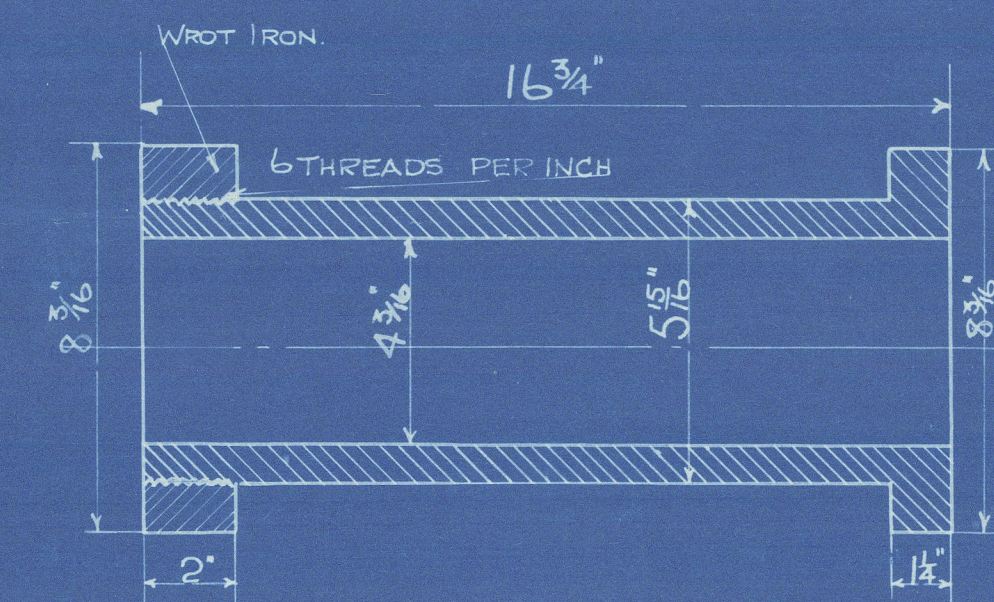


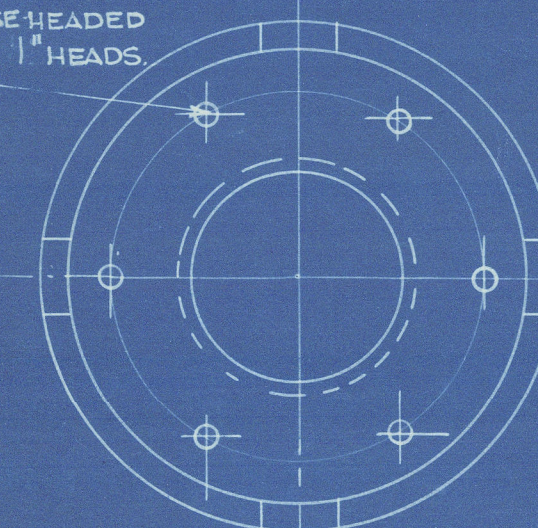
STERN GEARS. SHIP N° 582. SCALE-3"

8/9/13

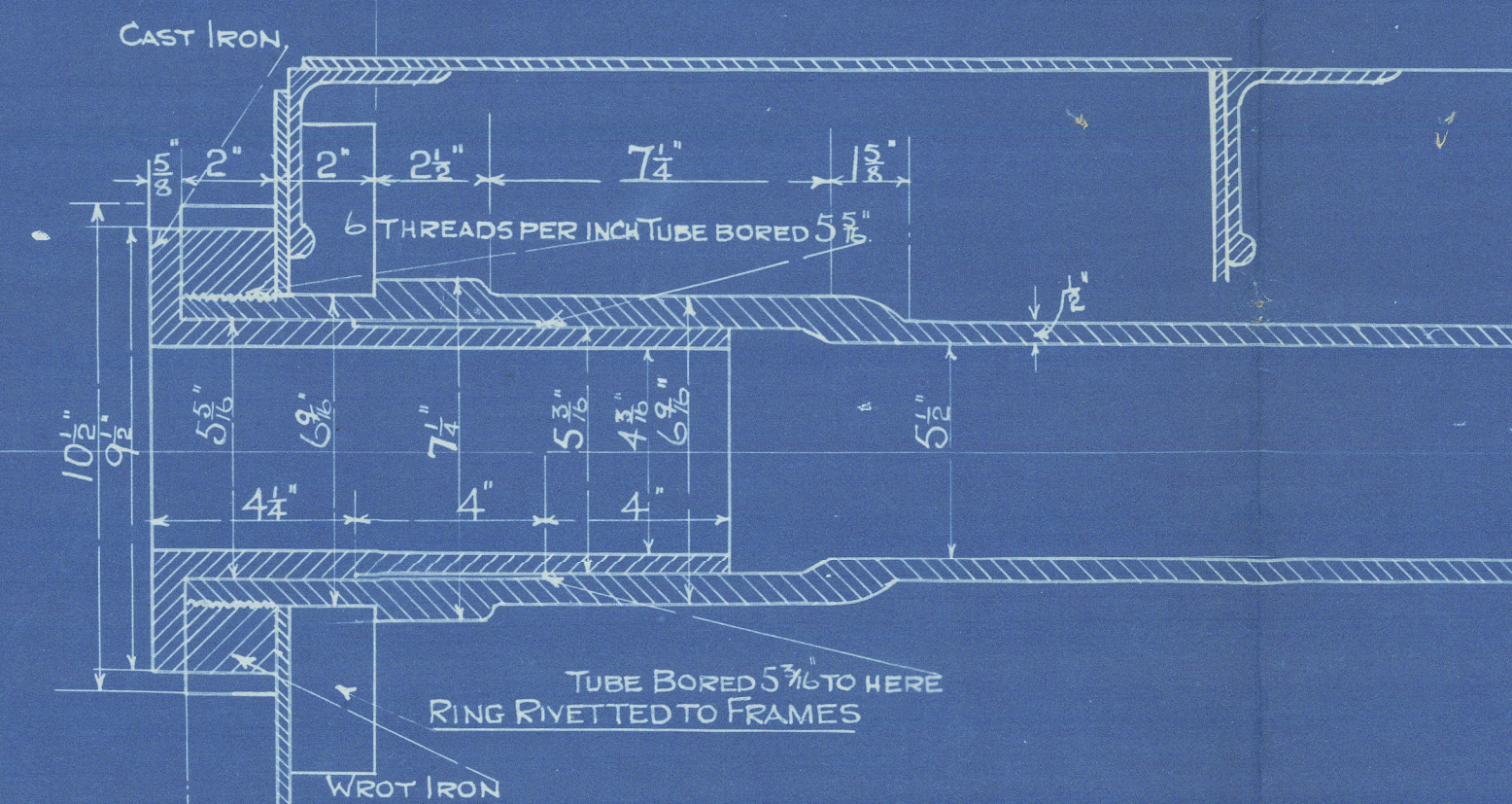


CAST IRON A BUSH.

SIX- 1/2 CHEESE HEADED
SCREWS WITH 1" HEADS

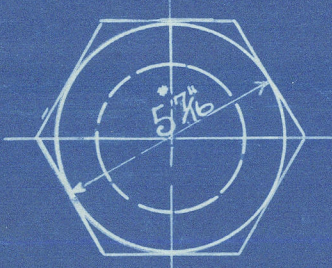
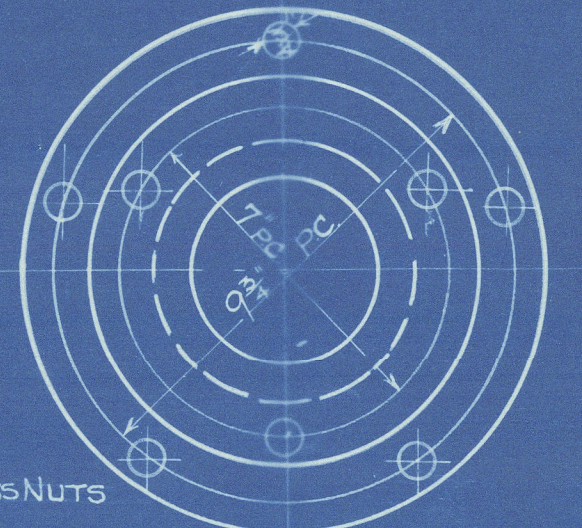
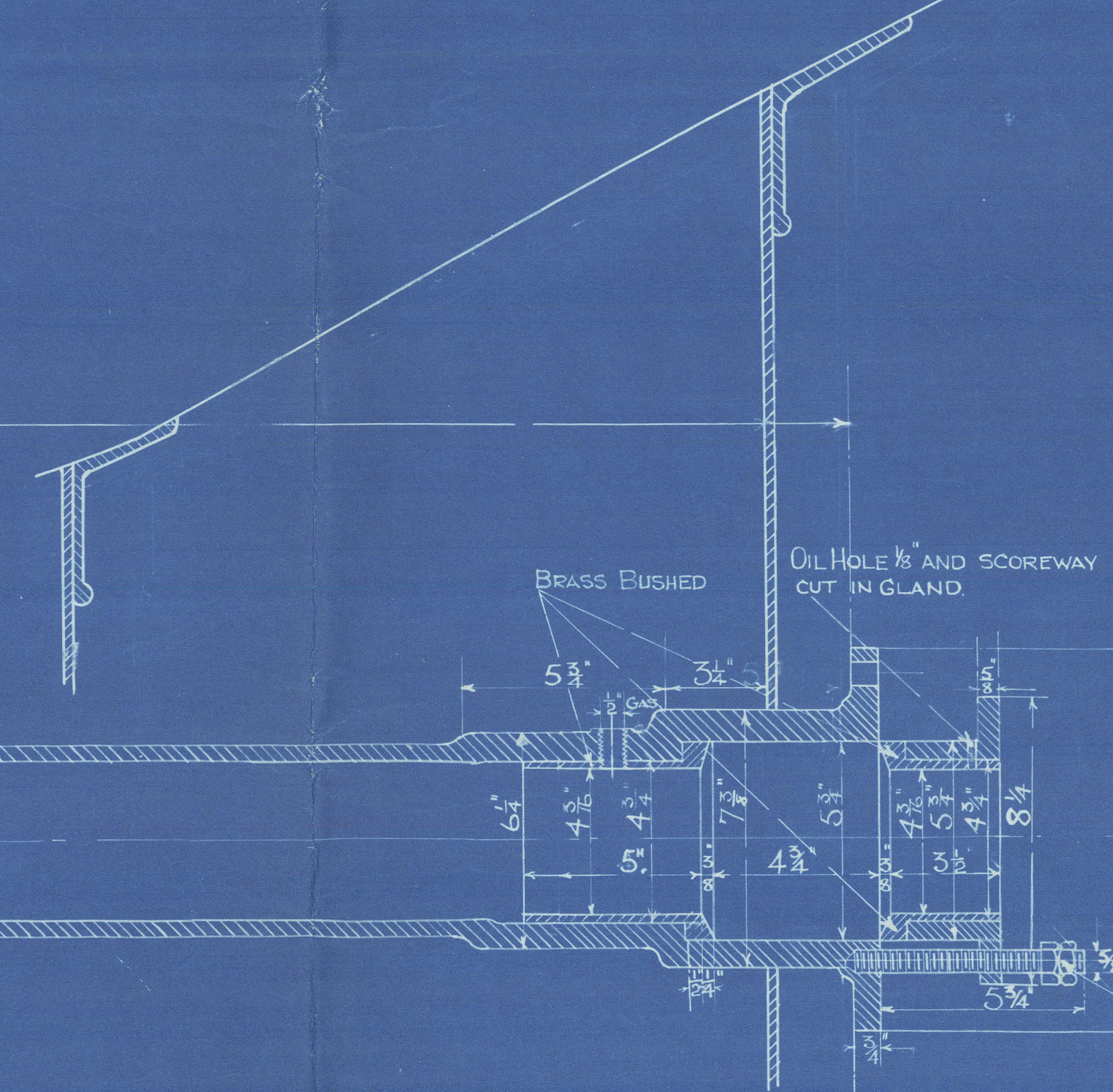


3 SCOREWAYS TO BE CUT IN BUSHES.



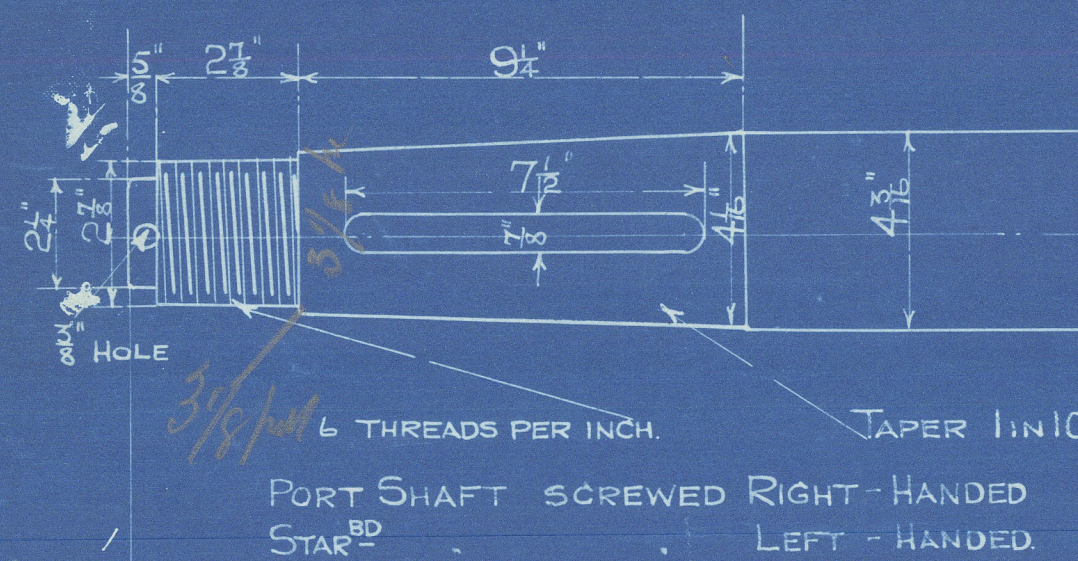
5'-0"

STERN TUBE
CAST IRON.



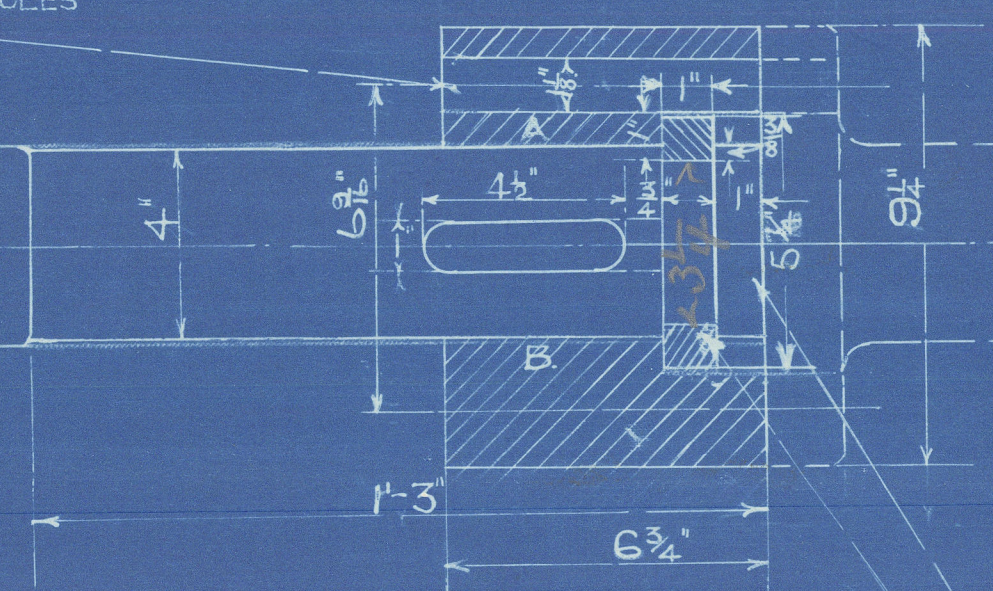
END VIEW OF NUT.

SPANNER FOR NUT
TO BE SUPPLIED.



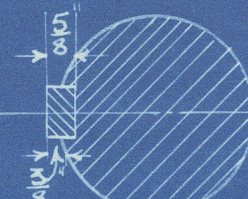
TAIL SHAFT
STEEL.

5- 15" BOLT HOLES



STEEL RING IN HALVES.

END OF SHAFT TO FIT AGAINST
COUPLING WHEN LOOSE COUPLING
IS IN POSITION.



SECTION AT A-B.
SHOWING POSITION
OF KEY.

ARR
6/9/13

FROM JAMES POLLOCK, SONS & CO., LTD.

Enclosure to

Lloyd's Register

Foundation

191

W872-0115 1/2

Stevetube & shafting.



Stern gear
Abdelat Northall
582



London Apt. No. 76266.

RETAILED

S.S. Kingsholm
Liv. 71687

W872-0115 2 1/2



© 2021

Lloyd's Register
Foundation