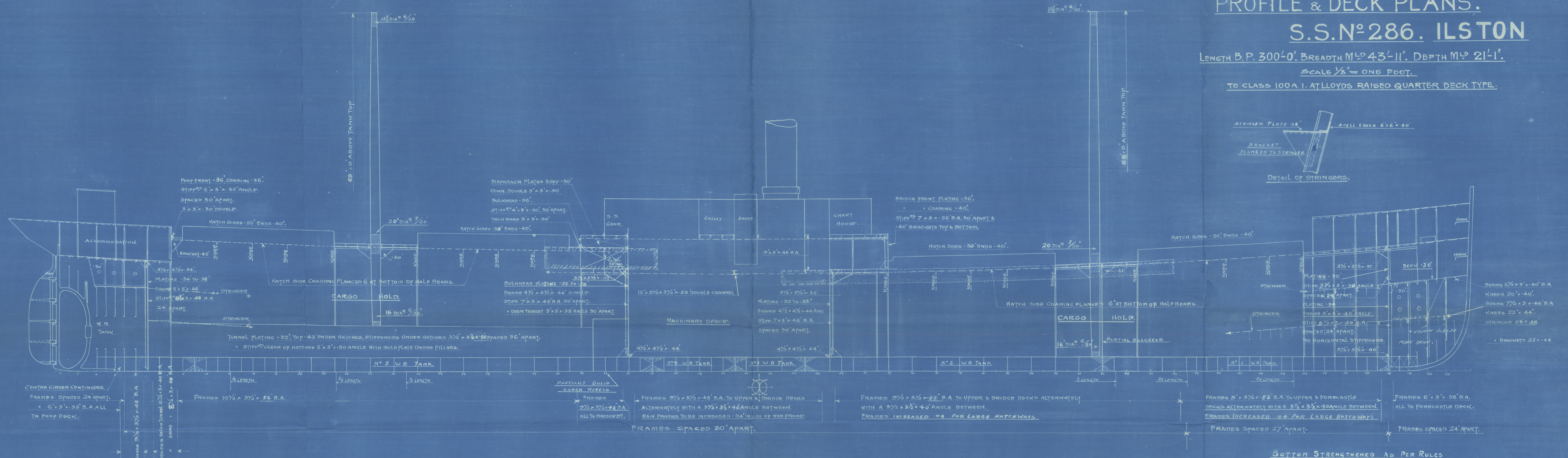
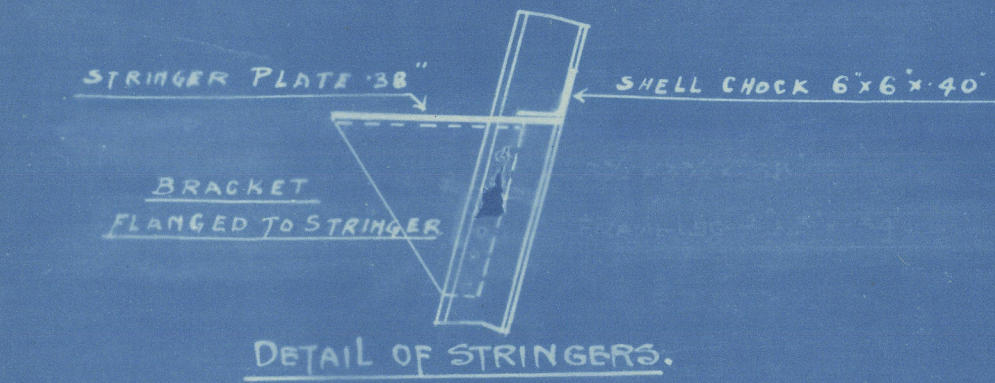


PROFILE & DECK PLANS. S.S.N^o 286. ILSTON

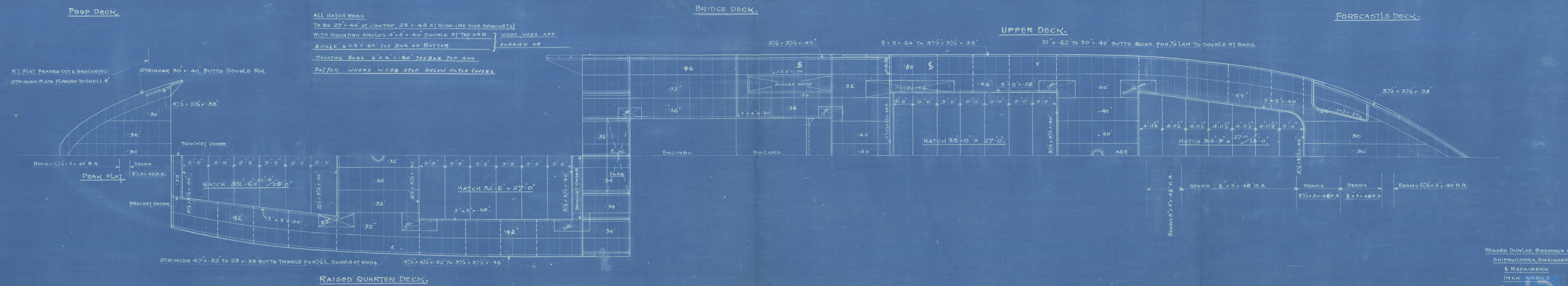
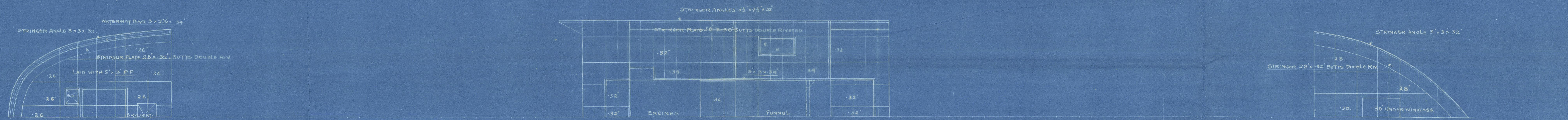
LENGTH B.P. 300'-0". BREADTH M^d 43'-11". DEPTH M^d 21'-1".

SCALE 1/8" = ONE FOOT.

TO CLASS 100 A. I. AT LLOYD'S RAISED QUARTER DECK TYPE.



BOTTOM STRENGTHENED AS PER RULES

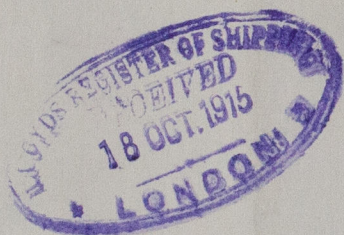


ALL HATCH WEBS
TO BE 27" x 44" AT CENTRE, 23" x 44" AT SIDE (NO SIDE BRACKETS)
WITH MOUNTING ANGLES 4" x 5" x 40" DOUBLE AT TOP AND
SINGLE 6" x 4" x 60" TEE BAR ON BOTTOM
MOUNTING BARS 6" x 9" x 100" TEE BAR TOP AND
BOTTOM WHERE WEBS STOP BELOW HATCH COVERS

AS BUILT.

Profile and deck plans
Messrs Dunlop, Bremner & Co
No 386
S.S. "Ilston"

Grk 1st Entry Report No 16927.



RETAIN

W872-0141



© 2021

Lloyd's Register
Foundation