

- NORTHUMBERLAND ENGINE WORKS -

- TRACING 368 -

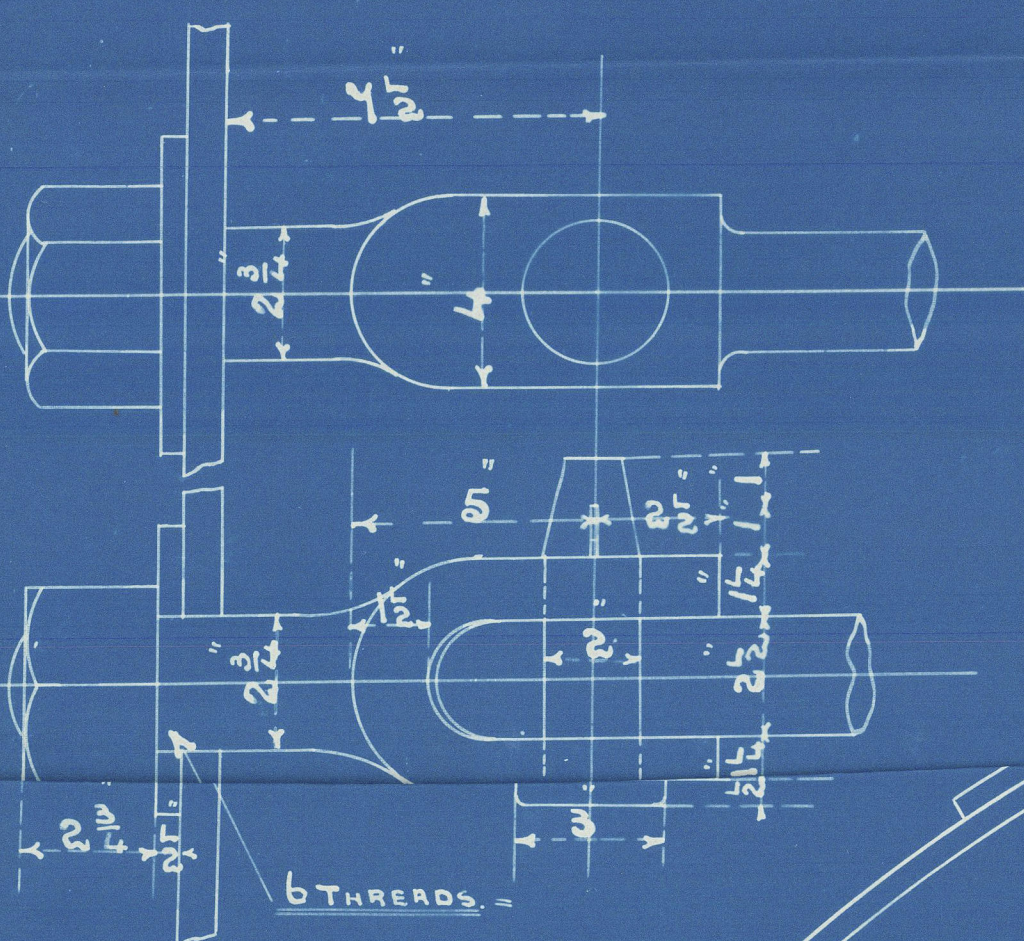
- SCHEDULE L -

- STEAM BOILER -

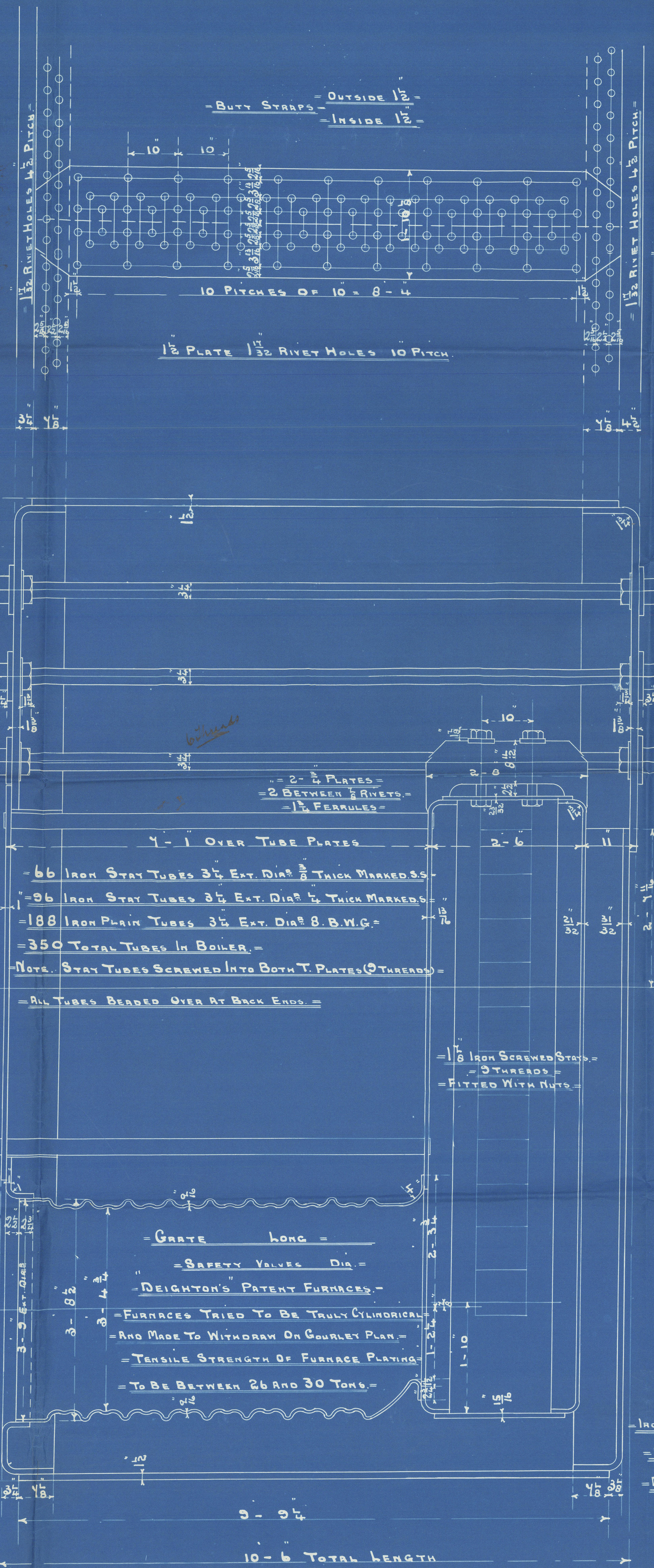
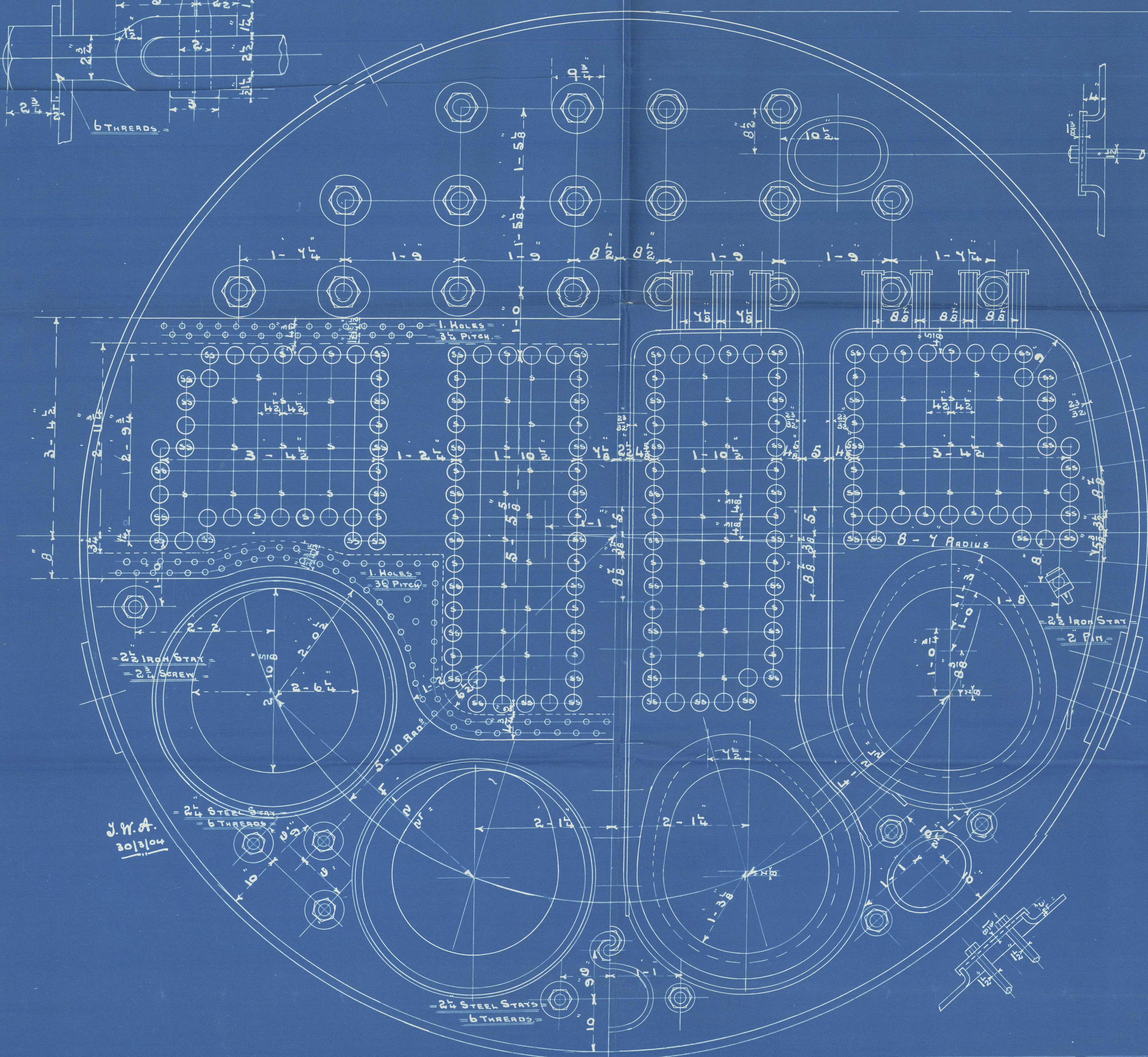
- SCALE 1 INCH = ONE FOOT. -

31.3.04

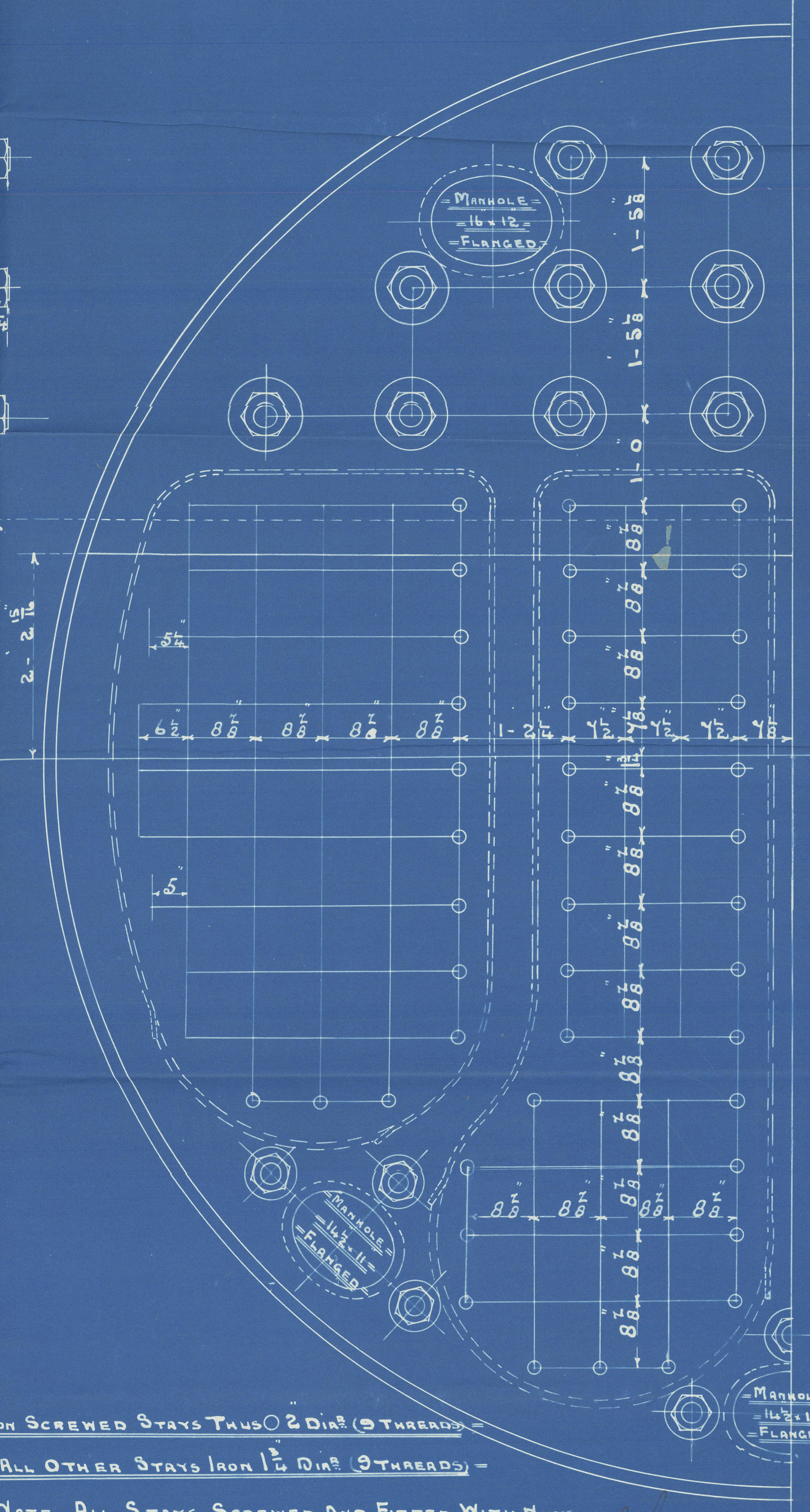
- IRON STAYS THUS. -
- NOT TO BE WELDED. -



No 1441



- WORKING PRESSURE = 180 LBS. -
- TEST PRESSURE = 360 -
- NOTE. ALL PLATES STAYS &c TO BE OF STEEL EXCEPT SCREENED STAYS -
- WHICH ARE MADE OF IRON -
- TENSILE STRENGTH OF SHELL PLATES AND BUTT STRAPS -
- TO BE NOT LESS THAN 23 TONS PER SQUARE INCH. -
- ALL HOLES DRILLED IN PLACE AFTER PLATES ARE BENT. -



- 1. THUS. -
- 1. OPPOSITE HAND. -
- CONTRACT 1566 -

N. E. M. Ct 1566
for

Armstrong & Co 2/5 754

S.S. 3/5 "Cago Manzanillo"

Newcastle Report 2 S.E.
180 W.P.

APR 47.661

No
Lloyds List
3 bolts
30 - 7. 24



© 2020

Lloyd's Register
Foundation

W880-0028