

STEEL BOILER.

DRAWING NO 3784.

HEATING SURFACE.

TUBES	2197.6
FURNACES	157.4
BACK TUBE PLATES	57.0
FRONT " "	50.0
COMBUSTION CHAMBERS	268.0

16'-6" INSIDE DIAMETER 10'-6" TOTAL LENGTH
180 LBS WORKING PRESSURE 360 LBS TEST PRESSURE

To Pass LLOYDS SURVEY

2 OFF

30.9.1914

PARTICULARS OF MATERIAL

DESCRIPTION	MATERIAL	TENSILE STRENGTH
SHELL PLATE BUTTS & MANHOLE PLATE	STEEL	29% TO 33 TONS
GIRDERS	"	28 " 32 "
ALL OTHER PLATES	"	26 " 30 "
MAIN STAYS	"	28 " 32 "
SCREWED STAYS	"	26 " 30 "
RIVETS	"	26 " 30 "

MACCOLL & POLLOCK LTD
DRAWING NO 3784
E A 30.9.1914
J.H.P. 1. OCT. 14.

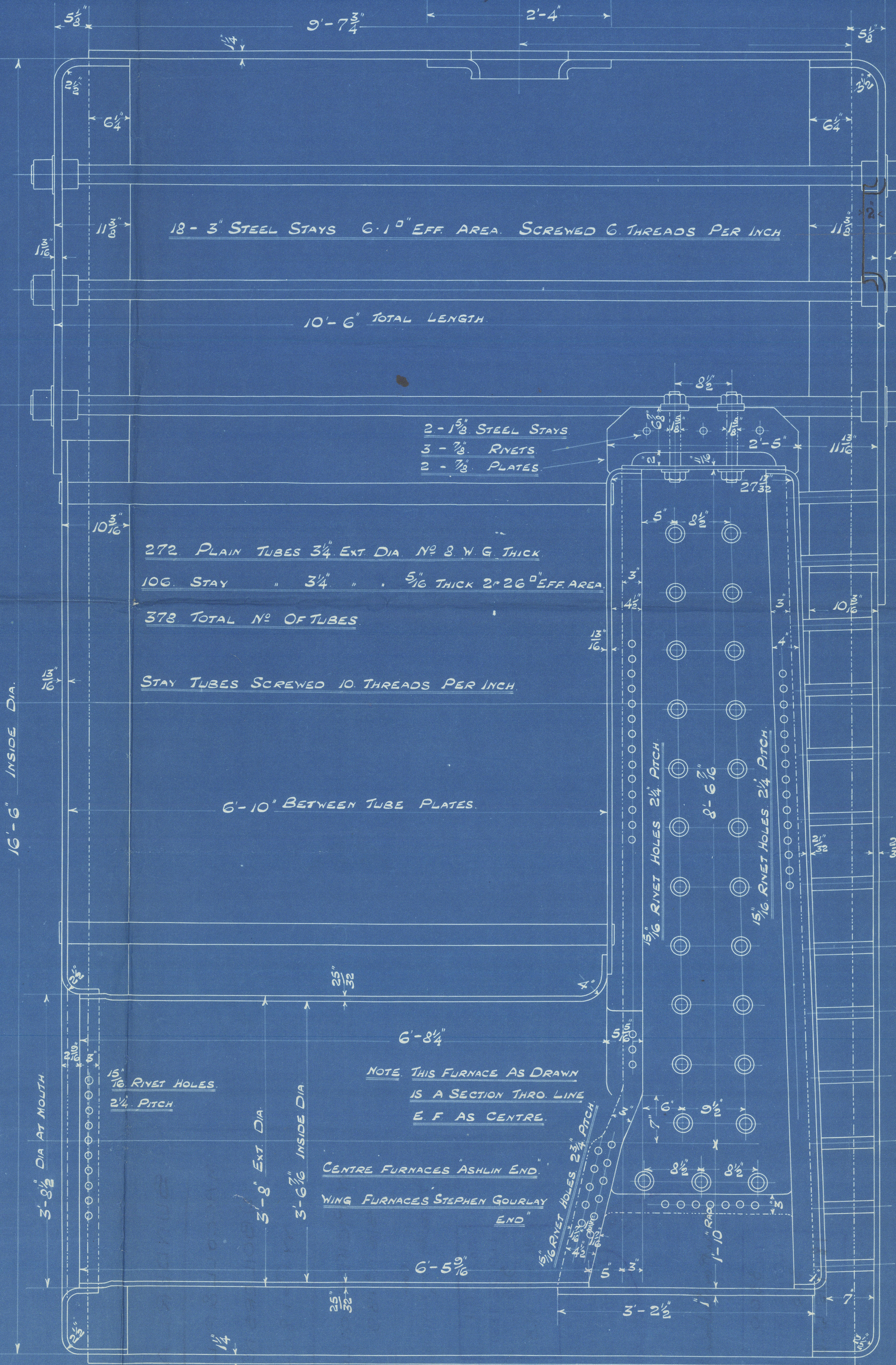
TOTAL 2730.0 $\frac{1}{2}$ FOR 1 BOILER
TOTAL 5460.0 $\frac{1}{2}$ FOR 2 BOILERS

GRATE SURFACE (5'-3" BAR) = 148.53 IN 2. BOILERS RATIO $\frac{148.53}{5460} = 38.76$

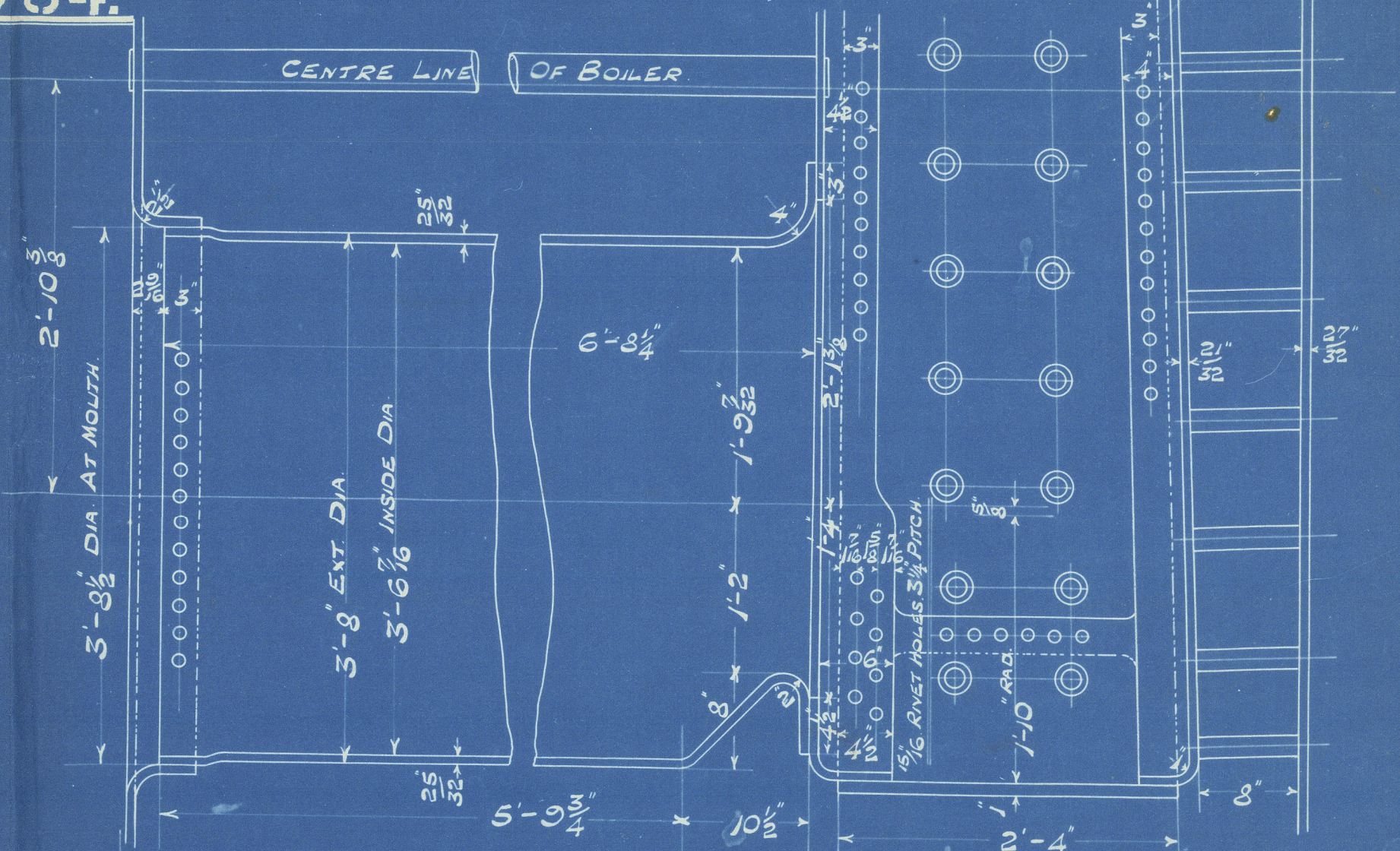
RIVETING ROUND TOP OF CIRCUMFERENTIAL SEAMS FROM A TO B



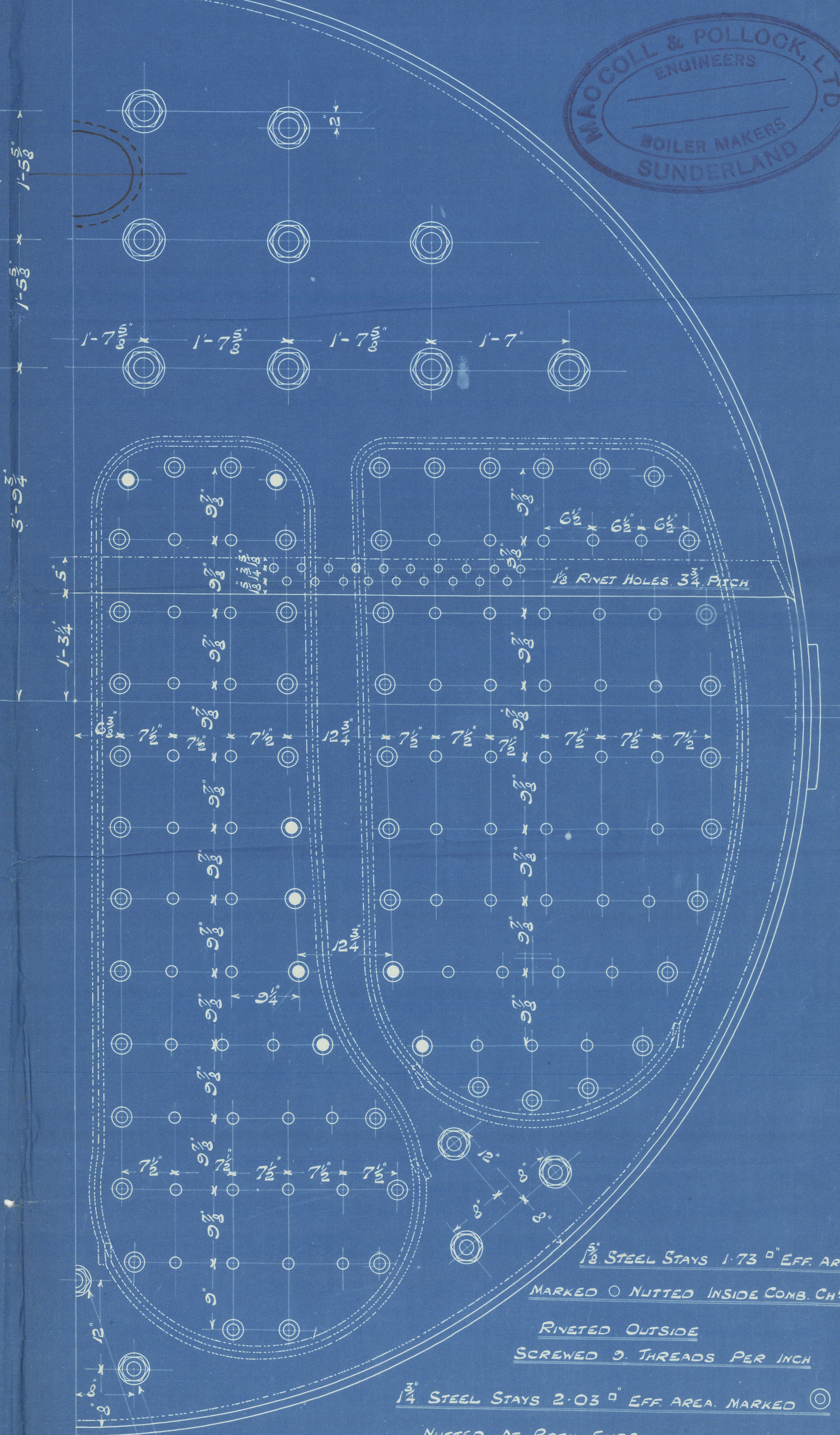
RIVETING ROUND BOTTOM OF CIRCUMFERENTIAL SEAMS FROM C TO D



SHELL PLATE 1/4
INSIDE BUTT STRAPS 1/8
OUTSIDE BUTT STRAPS 1/8
PERCENTAGE OF JOINT
PLATE 85.71%
RIVETS 87.62%



SECTION SHOWING WING FURNACES



MACCOLL & POLLOCK LTD
ENGINEERS
BOILER MAKERS
SUNDERLAND

CONTRACT NO 257

Lloyd's Register Foundation

SUNDERLAND

MACCOLL & POLLOCK LTD

(2) BOILERS NO 257

W.P. = 180 LBS

W. PICKERSGILL & SONS LTD

S/S NO 189

^{Pink}
Mark on boilers. -

^{Pink}

No. 3294
LLOYD'S TEST
360 lbs.
22-4-15 W.B.

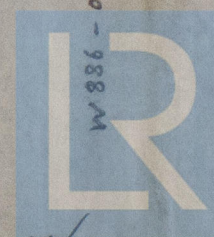


3300
Mark on stationary boiler. -

No. 3300
LLOYD'S TEST
360 lbs.
18-5-1915 L.C. 10

S. S. "elford"

SUNDERLAND RPT. NO. 26476



© 2020

Lloyd's Register
Foundation