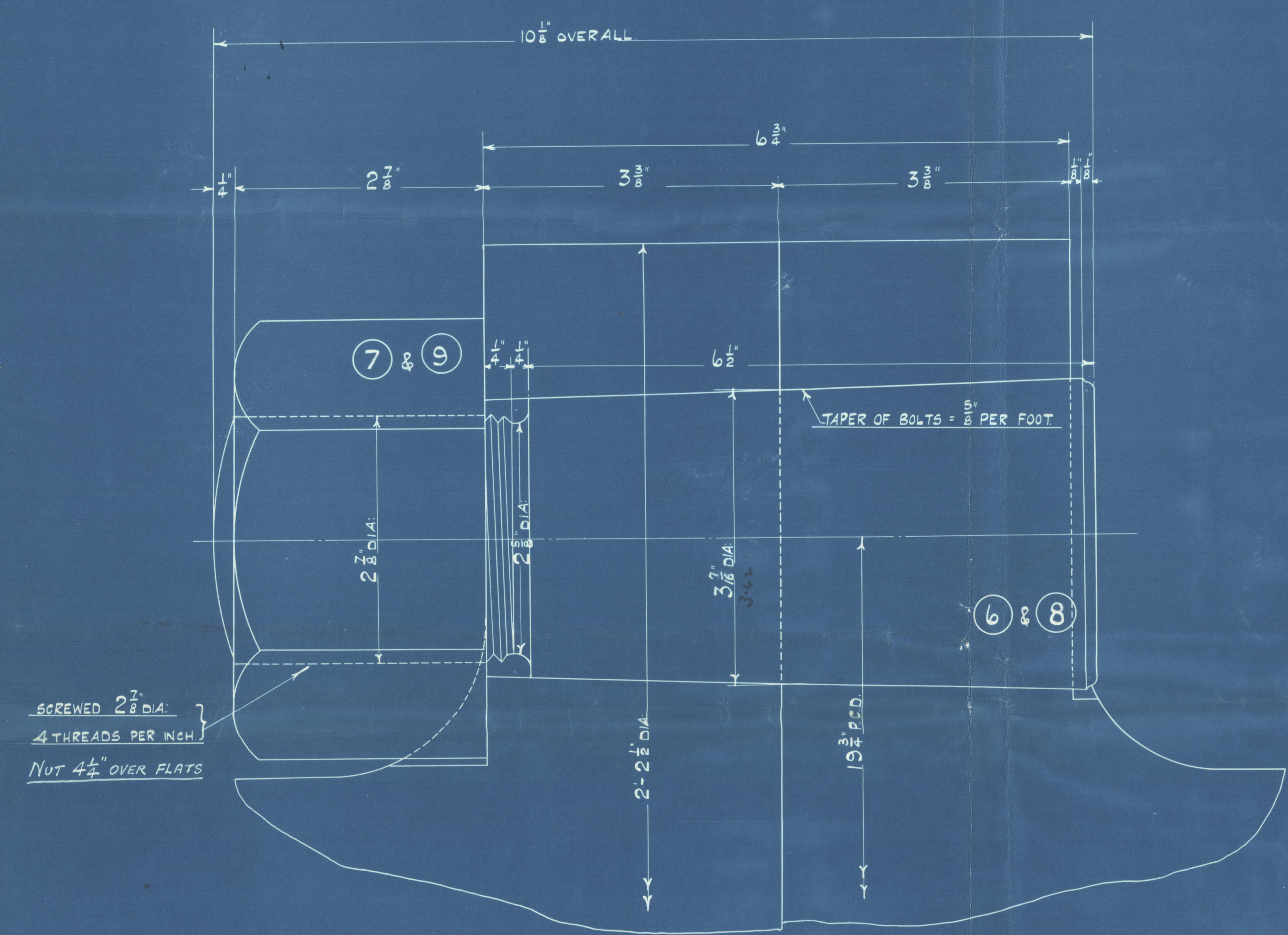
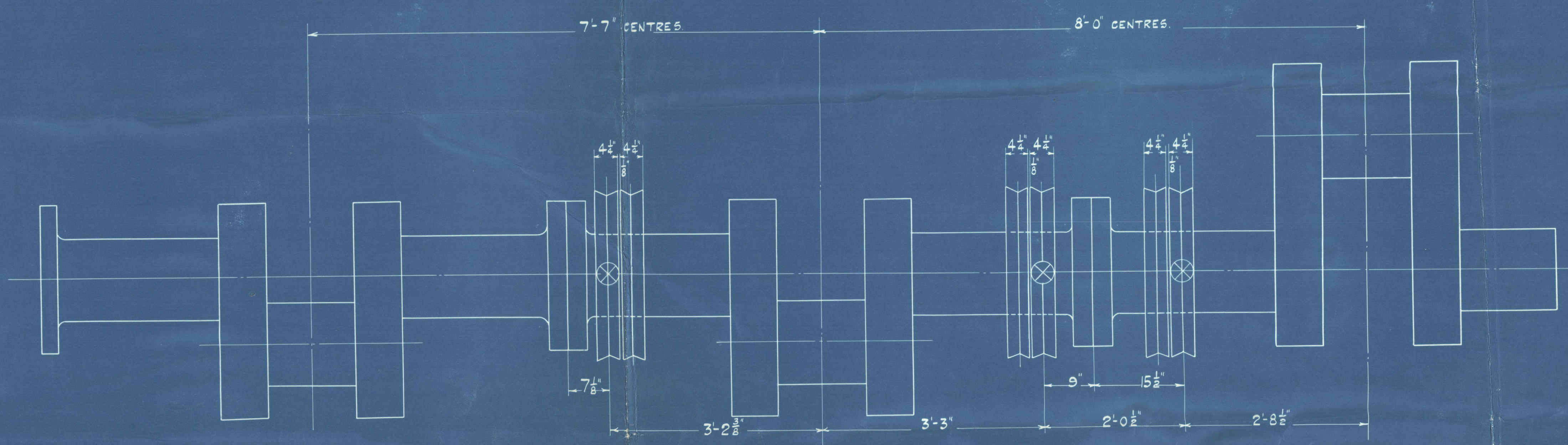


15/1/27



SCREWED 2 7/8\"/>

DETAIL OF COUPLING BOLT  
FULL SIZE.

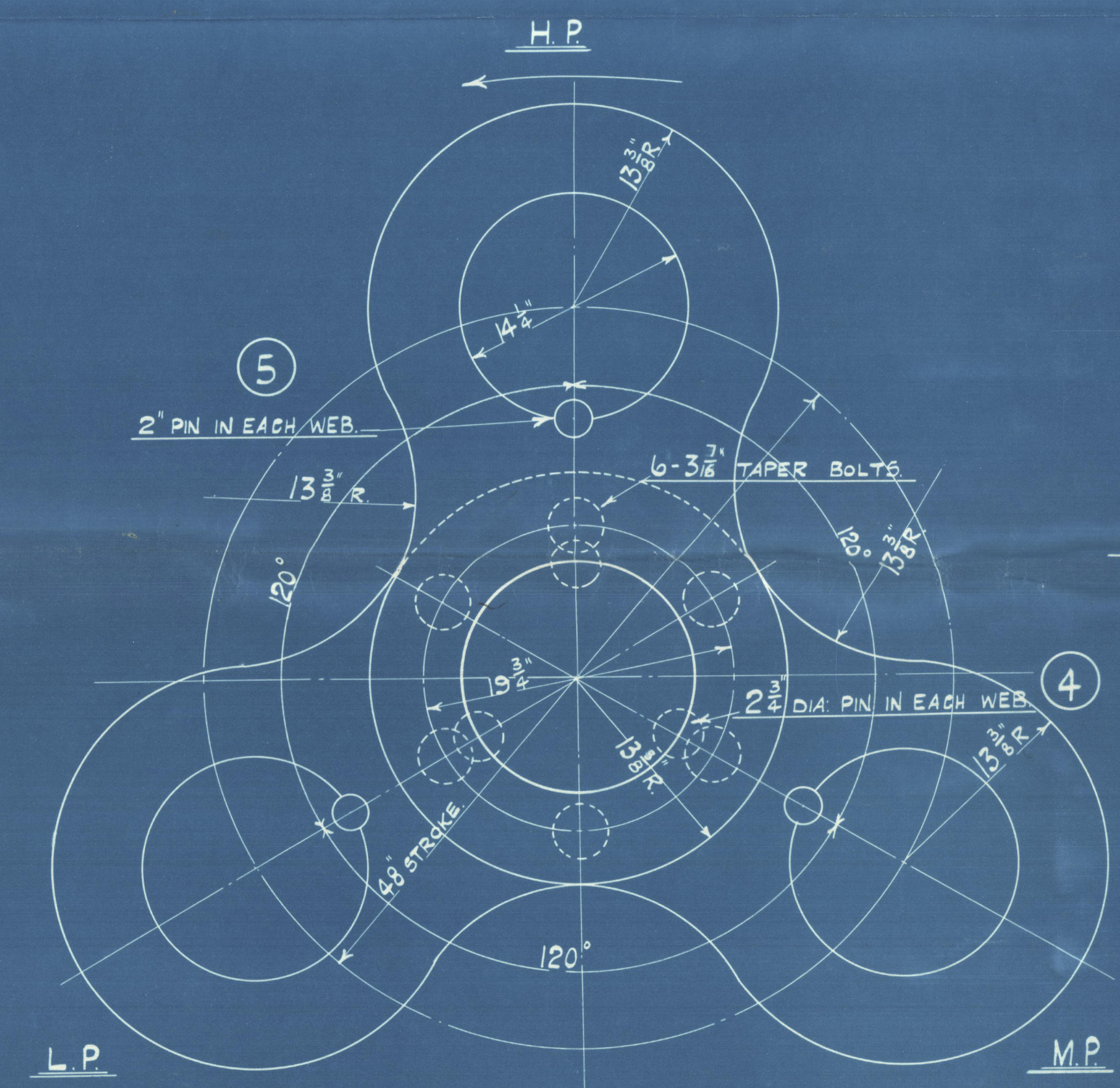


AHEAD SHEAVES MARKED THUS ⊗  
FOR DETAILS OF ECCENTRIC KEYS SEE DWG. OF ECCENTRICS.

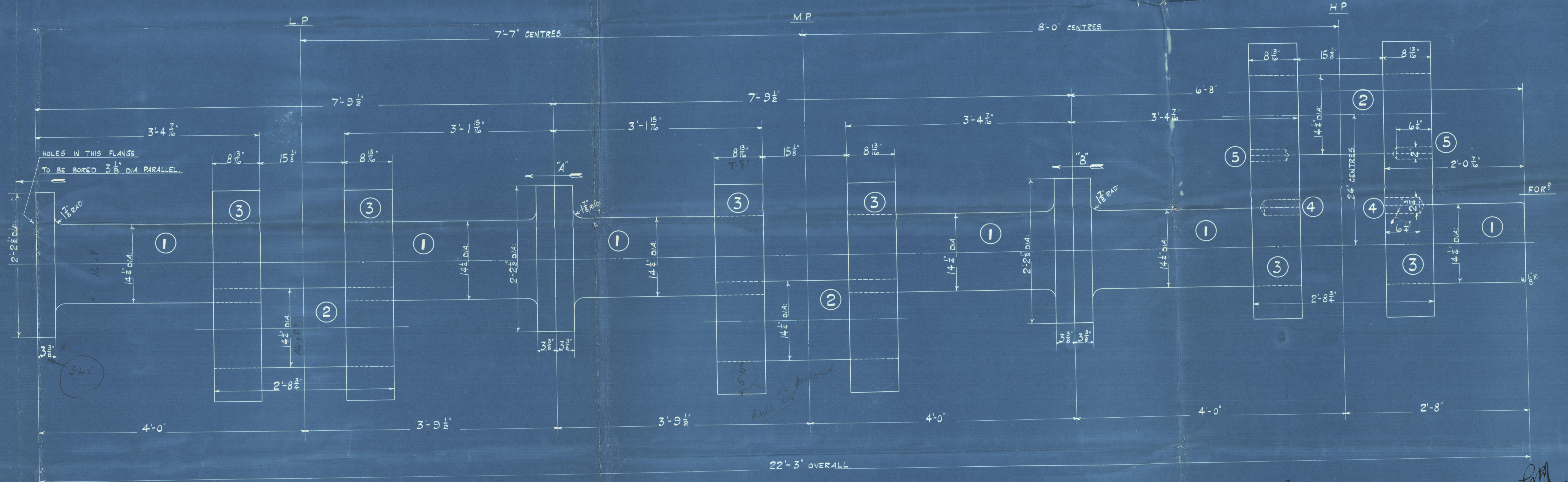
POSITION OF ECCENTRIC SHEAVES.  
SCALE - 1\"/>

CRANK SHAFT TO BE OF BEST FORGED STEEL.  
TO BE FINISHED COMPLETELY WITH BOLTS IN COUPLINGS A & B AS SHOWN.  
TO BE TO LLOYD'S REQUIREMENTS & SURVEY & TO OUR SATISFACTION.  
SIZE OF MAIN ENGINES: 26\"/>

LIST OF PARTS									
QUANTITIES GIVEN ARE FOR ONE ENGINE NO. ONLY									
QST MARK	DESCRIPTION	NO. OFF	WORKING	AS DEL. BY HAND	SPARE	MATERIAL	MAKERS	D.O. REMARKS	COST INDEX No. 107
1	CRANK JOURNALS	10	—	—	—	FORGED	W. H. & S. S.		2
2	" PINS	3	—	—	—	"	"		3
3	" WEBS	6	—	—	—	"	"		4
4	PINS FOR JOURNALS	6	—	—	—	STEEL	"		6
5	" CRANK PINS	6	—	—	—	"	"		6
6	COUPLING BOLTS	12	—	6	—	SPARES BY	W. H. & S. S.		5
7	NUTS FOR 6	12	—	6	—	W. I.	"		5
8	COUPLING BOLTS FOR AFT COUP.	6	—	—	—	STEEL	W. H. & S. S.		5
9	NUTS FOR 8	6	—	—	—	W. I.	"		5
10	WEAR-DOWN GAUGE	ONE	—	—	—	STEEL	"		5



END VIEW - LOOKING AFT.  
H.P. CRANK LEADS.



DRAWN BY  
CHECKED BY  
PASSED BY

DRAWING NO. 10.

# CRANKSHAFT.

SCALE - 1 1/2\"/>



ENGINE NO. 3668

12/1/27



Messrs  
R. W. Hawthorn Leslie & Co  
Crane Shaft  
No 3668. 8/5546

---

S.S. Ireland  
of  
London

---

NEWCASTLE ON TYNE.

Report No. 81827

---

W92-0042



© 2020

Lloyd's Register

FOR FURTHER INFORMATION