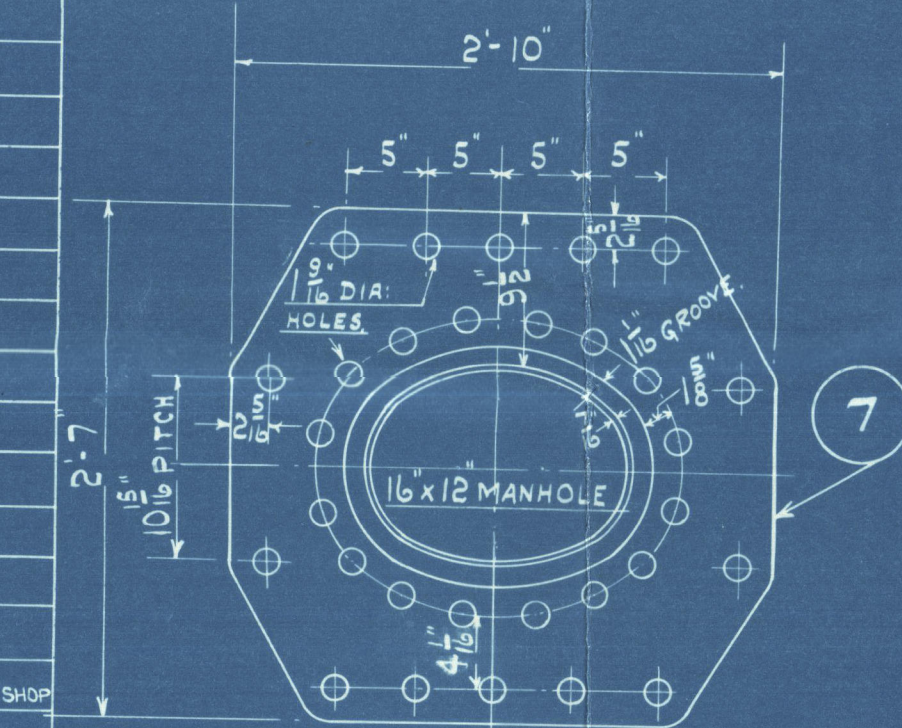
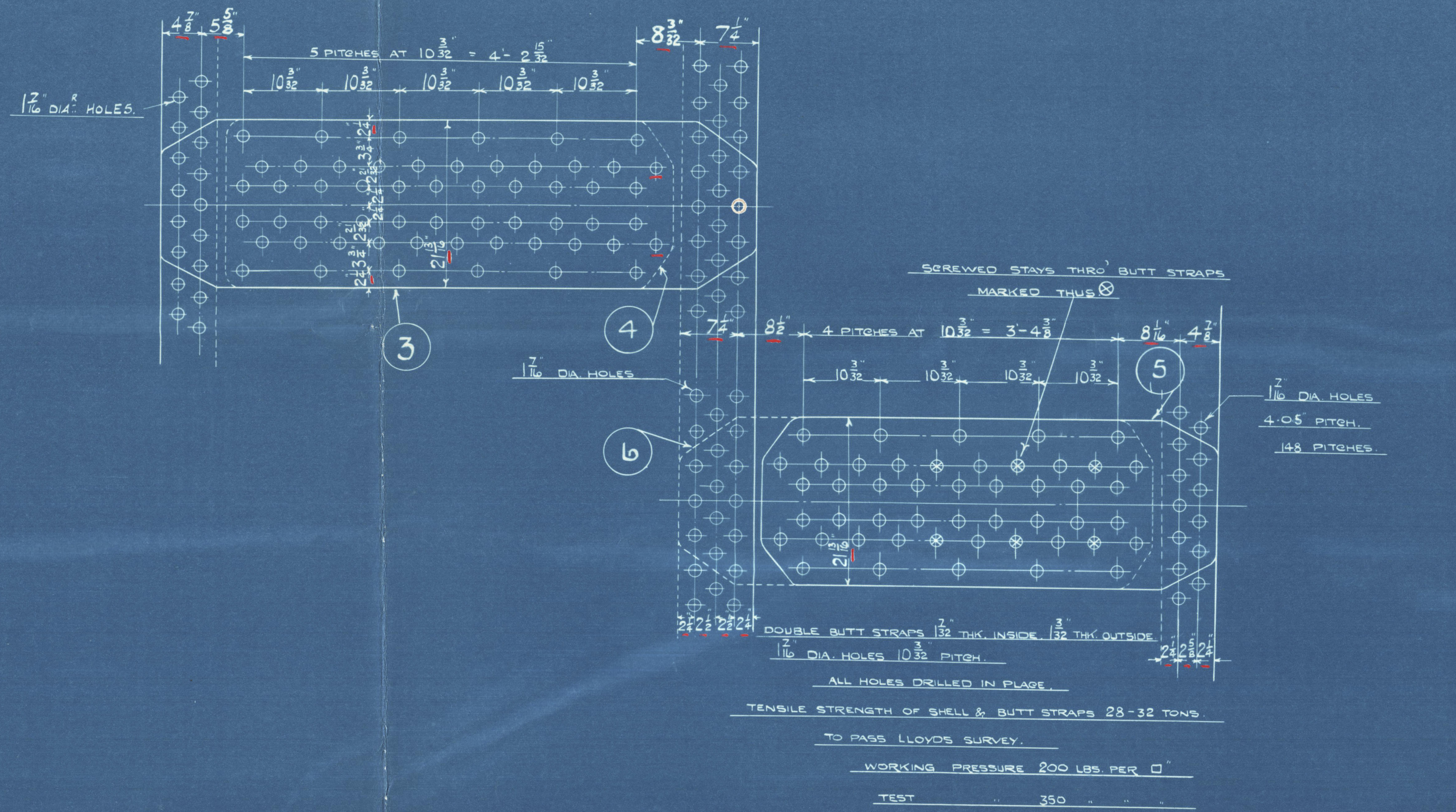
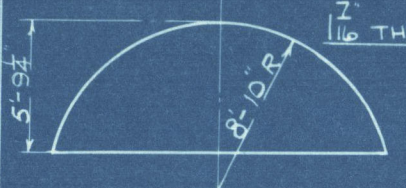
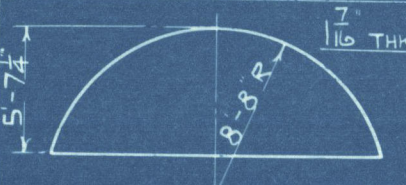
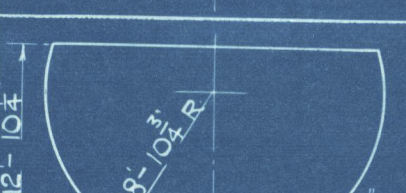
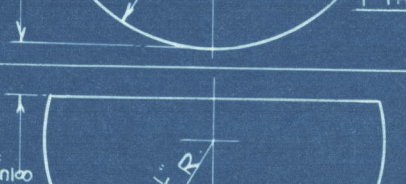
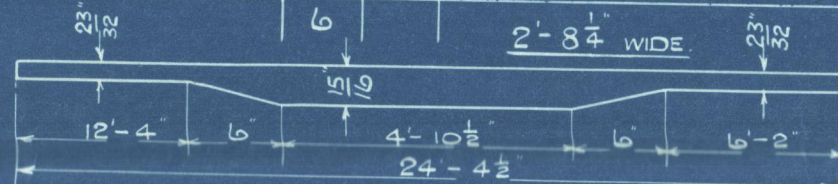
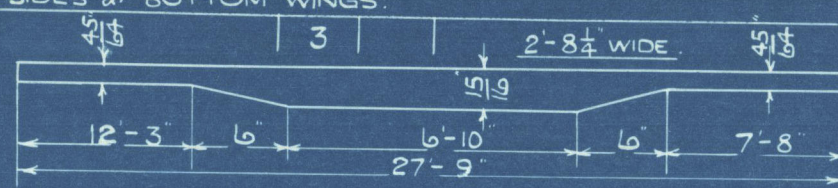


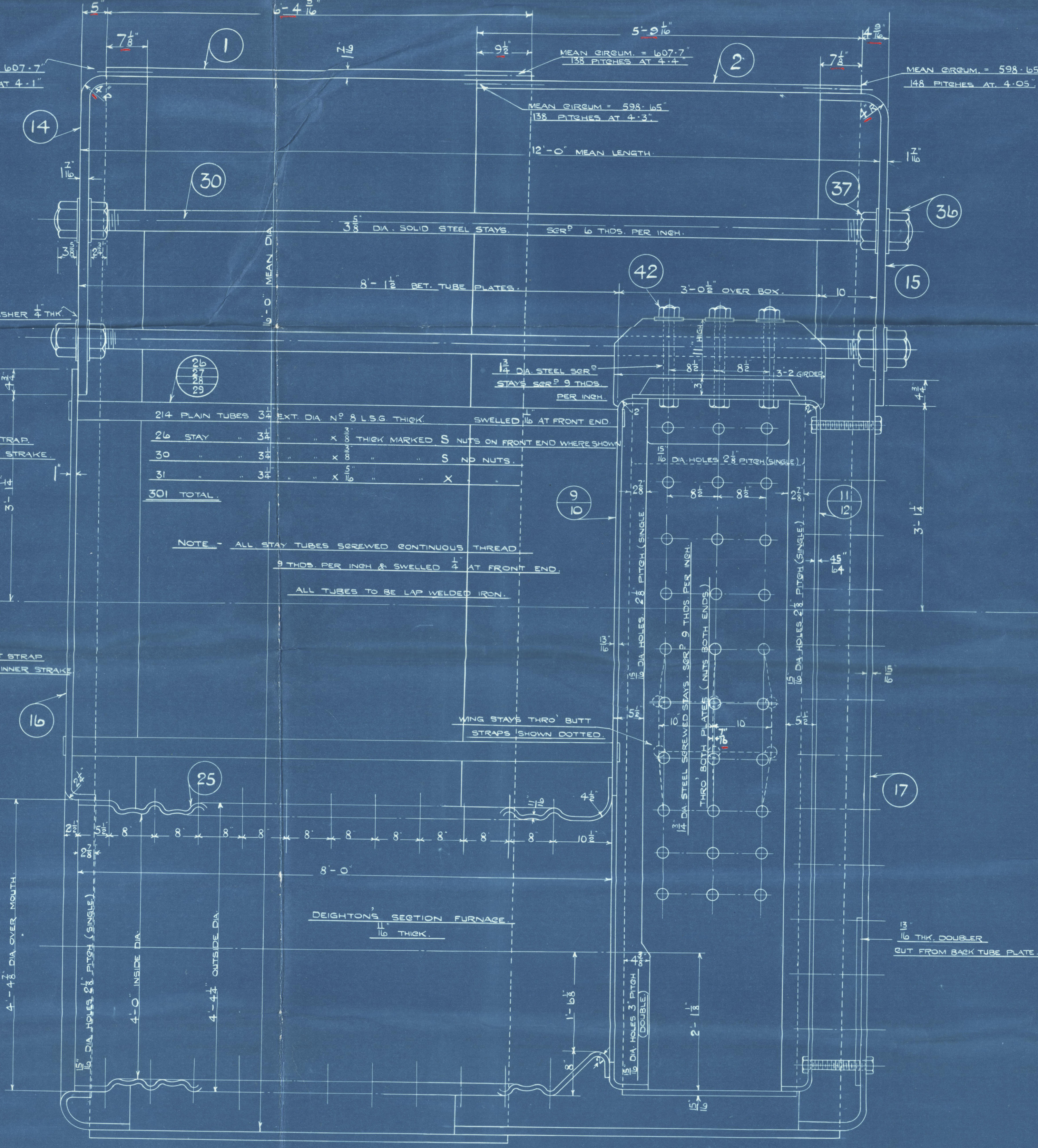
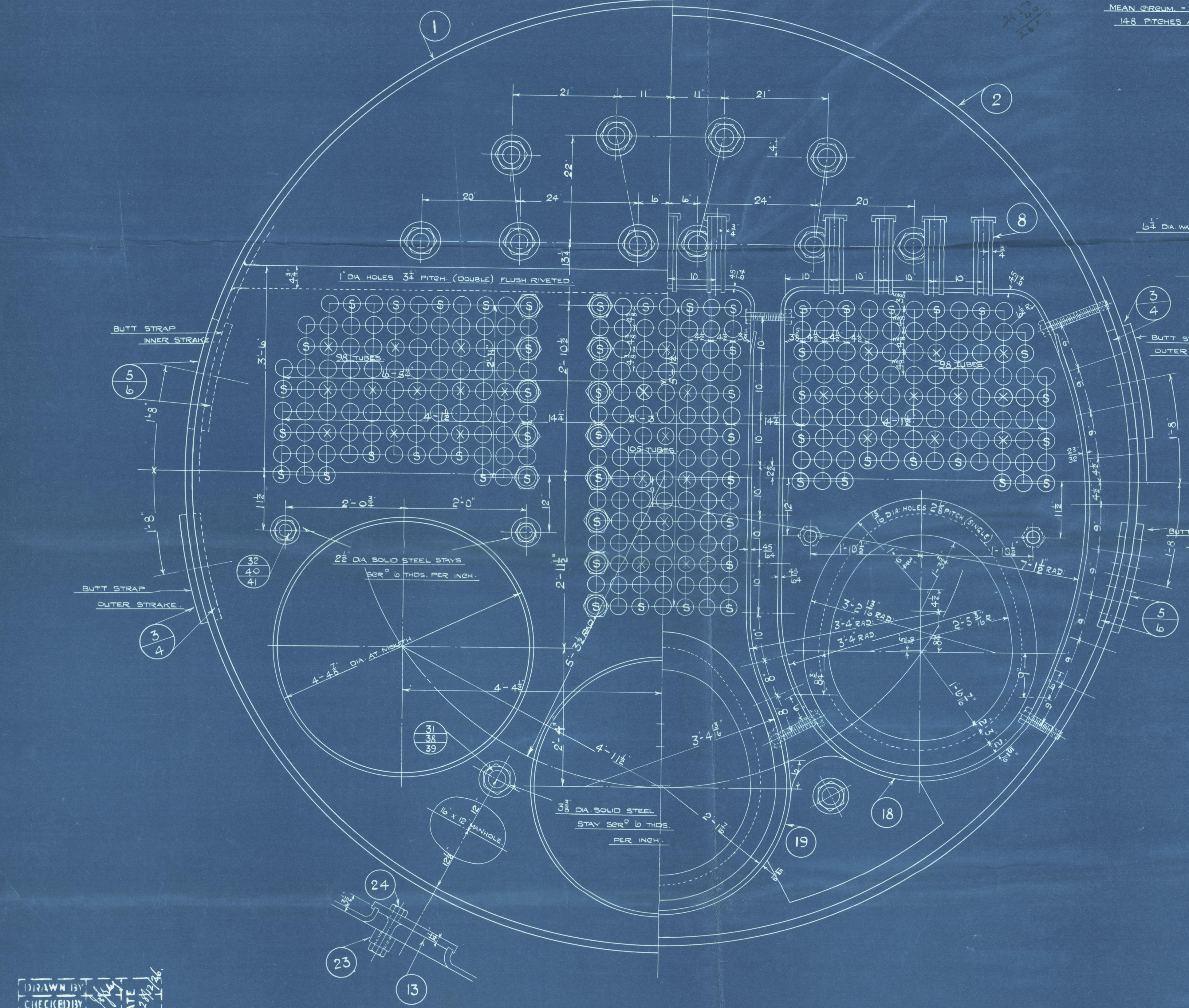
NO.	DESCRIPTION	QTY	DIMENSIONS	REMARKS	TESTS	NOTES
25	FURNACES	9	4'-0" DIA. 8'-0" LONG	STEEL 28-32	10	
26	PLAIN TUBES	142	3 1/2" EXT. DIA. 1/8" W.T.	IRON	10	
27	STAY	90	3/8" X 12'-9 1/2" LONG	STEEL	10	
28		98	3/8" X 12'-9 1/2" LONG	STEEL	10	
29		78	3/8" X 12'-9 1/2" LONG	STEEL	10	
30	STEAM SPACE STAYS	30	3/8" DIA. X 12'-9 1/2" LONG	STEEL	10	
31	WATER	6	3/8" X 12'-9 1/2" LONG	STEEL	10	
32	BREAST STAYS	12	2 1/2" X 8'-9 1/2" LONG	STEEL	10	
33	SCREWED	95	1 1/2" X 10'-0" LONG	STEEL	10	
34		27	2" X 10'-0" LONG	STEEL	10	
35		3	2 1/2" X 10'-0" LONG	STEEL	10	
36	STEAM SPACE STAY NUTS OUTER	60	3/8" X 3 1/2" DEEP	W.I.		
37	INNER	60	3/8" X 3 1/2" DEEP	W.I.		
38	WATER	12	3/8" X 3 1/2" DEEP	W.I.		
39	INNER	12	3/8" X 3 1/2" DEEP	W.I.		
40	BREAST STAY NUTS OUTER	24	2 1/2" X 2 1/2" DEEP	W.I.		
41	INNER	12	2 1/2" X 2 1/2" DEEP	W.I.		
42	COMB. CH. TOP NUTS	100	1 1/2" X 1 1/2" DEEP	W.I.		
43	SCREWED STAY	1265	1 1/2" X 1 1/2" DEEP	W.I.		
44		455	2" X 1 1/2" DEEP	W.I.		
45		36	2 1/2" X 1 1/2" DEEP	W.I.		
46	WASHERS			STEEL	AS REQ'D	
47	RIVETS			STEEL	AS REQ'D	



TESTS OF MATERIAL		
SHELL PLATES	28 - 32 TONS	
BUTT STRAPS	28 - 32	
COMPENSATING PLATE	28 - 32	
GIRDERS	28 - 32	
LONGIT. STAYS	28 - 32	
SC'S	28 - 30	
END PLATES	28 - 30	
ALL PLASING PLATES	28 - 30	
FURNACES	28 - 30	3 BLKS
HEATING SURFACE TUBES	2081	
FURNACES	203	
SIDES	176	
BACKS	95	
STAY TUBE PLATES	55	
FRONT	40	
TOTAL	2650	7950
GRATE AREA (6'-0" BAR)	72	216



QUANTITIES ARE MARKED FOR 3 BOILERS									
MARK	DESCRIPTION	NO OF PIECES	DIMENSIONS	REMARKS	TESTS	NOTES			
1	SHELL OUTER STRAKE	6	25'-4 1/2" X 4'-4 1/2" X 1 1/2"	STEEL 28-32					
2	INNER	6	25'-4 1/2" X 4'-4 1/2" X 1 1/2"	STEEL 28-32					
3	BUTT STRAPS OUTER (OUTER)	6	6'-4 1/2" X 5'-9 1/2" X 1 1/2"						
4	INNER (INNER)	6	6'-4 1/2" X 1'-10 1/2" X 1 1/2"						
5	OUTER (INNER)	6	4'-10" X 1'-10 1/2" X 1 1/2"						
6	INNER (INNER)	6	4'-11" X 1'-10 1/2" X 1 1/2"						
7	COMPENSATING PLATE	3	5'-1 1/2" X 1'-10 1/2" X 1 1/2"						
8	GIRDERS	6	3'-2 1/2" X 1'-5" X 1 1/2"						
9	BACK TUBE PLATE CENTRE	3	11'-5 1/2" X 5'-3" X 1 1/2"	28-30					
10	WINGS	6	9'-1 1/2" X 6'-0" X 1 1/2"						
11	COMB. CH. BACK CENTRE	3	11'-4" X 5'-0" X 1 1/2"						
12	WINGS	6	9'-0" X 5'-0" X 1 1/2"						
13	MANHOLE DOOR END	6	1'-9" X 1'-5" X 1 1/2"	28-30					
14	TOP	3				10 / 15 PLAT. DOOR PATTERN			
21	DOGS	6				SEE 97" 108" 149.8 PLATE FROM BORD			
22	BOLTS	6				TAKEN FROM STOCK PLANTHORN SHAW PATTERN (62 LBS)			
23	DOGS	12				SEE 97" 108" 149.8			
24	BOLTS	12				TAKEN FROM STOCK PLANT DOOR PATTERN (146 LBS)			
14	TOP END PLATE FRONT			28-30		10 / 3			
15	BACK								
16	BOT. END FRONT								
17	BACK								
18	COMB. CH. SIDES & BOTTOM WINGS	3							
19	COMB. CH. SIDES & BOTTOM CENTRE	3							



DRAWN BY
CHECKED BY
PASSED BY

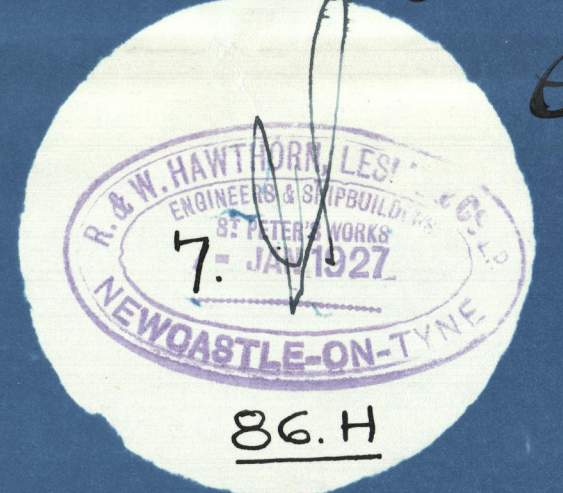
DRAWING NO 101.

MAIN BOILER.

3 - OFF.

SCALE - 1" = ONE FOOT.

ENGINE NO 3668.



Amendments marked in red ink
E.R.
8/1/27.

Amended plan. No 3668.
Amendments shown in red

R. W. Hawthorn Leslie & Co Ltd
3 Boilers. HP 200 lb per sq. in.
(Ship No 546)

Safety valves High Lift Coils turns
Two 2 $\frac{7}{8}$ " diam for D.B.

HP Bri. Two. 2 $\frac{1}{4}$ " diam

S S Ireland
London

NEWCASTLE ON TYNE.

REPORT No. 81827.

W92-0045



© 2020

Lloyd's Register
Foundation