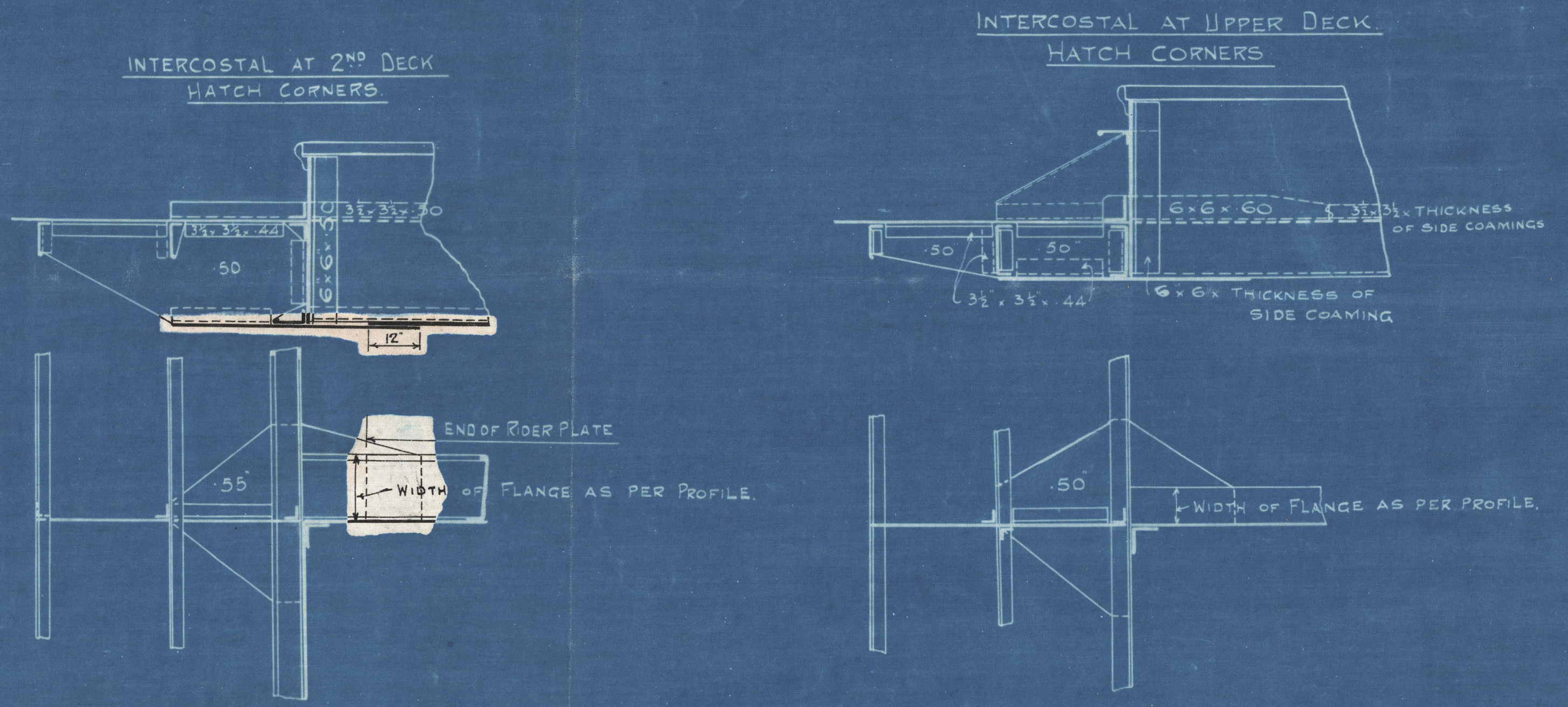


2/27/24

N^o 582.4.

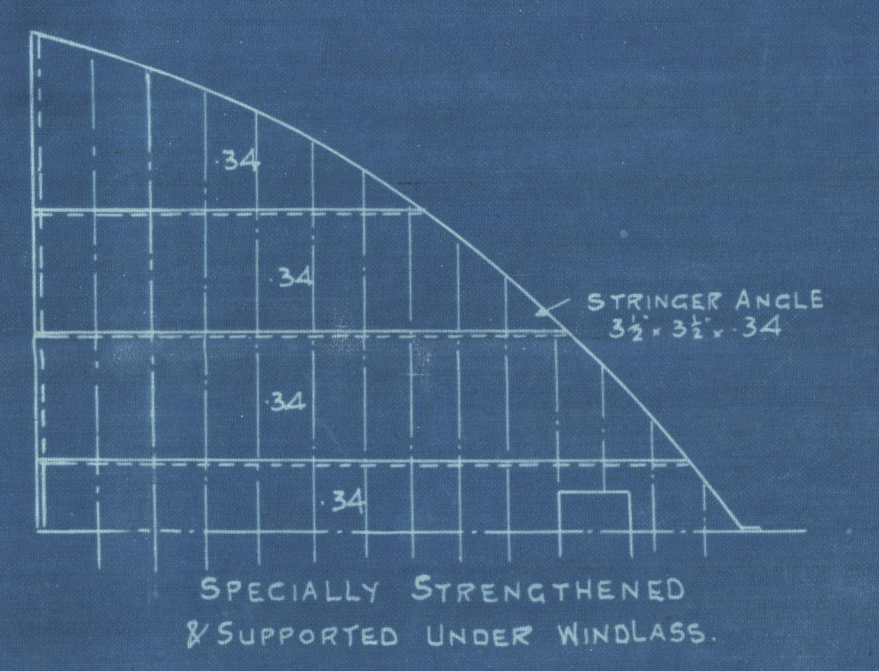


PROFILE & DECK PLANS.

375-0 x 52-3 3/4 MD x 36-3 3/4 MD.

SCALE 1/8" = 1 FOOT

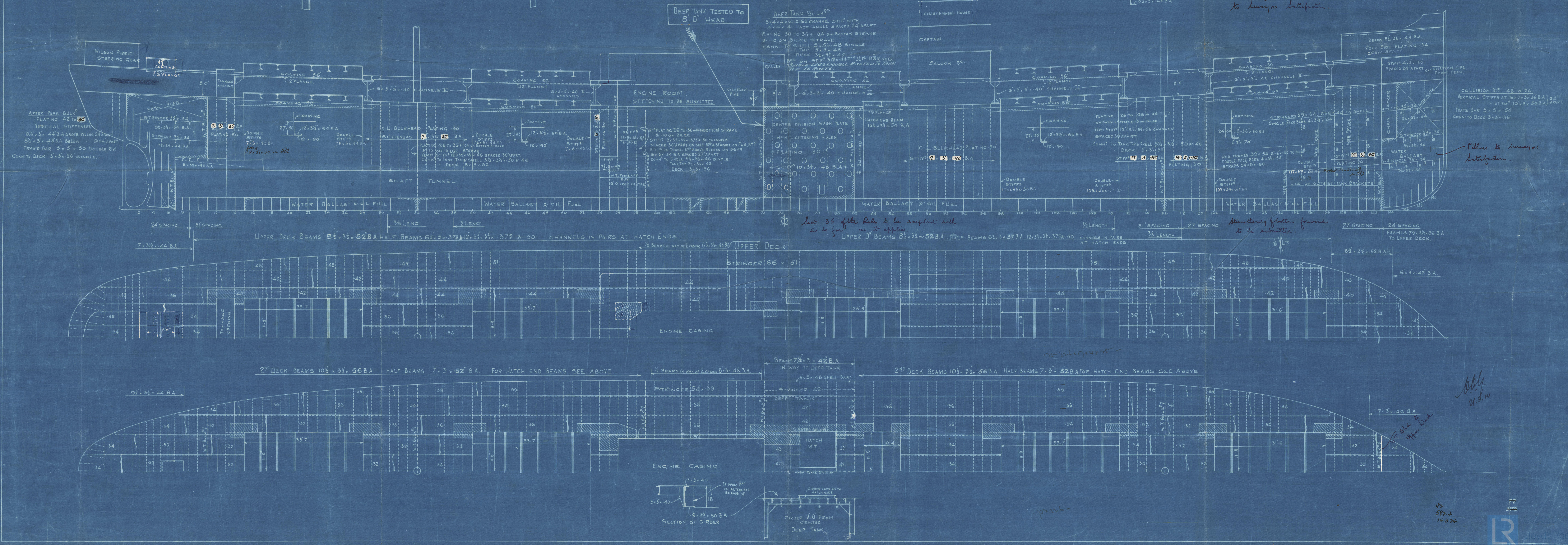
FOR A DRAUGHT NOT EXCEEDING THAT
CONTEMPLATED FOR COMPLETE SUPERSTRUCTURE VESSEL.



PILLARS AT HATCH ENDS TO BE DOUBLE CHANNELS
BACK TO BACK OF SCANTLINGS AS SHOWN, OR
EQUIVALENT ARRANGEMENT.

- 2ND DECK HATCH END BEAMS
- N^o 1 HATCH FORWARD END 24' x 50"
- N^o 1 HATCH AFTER END 24' x 50"
- N^o 2, 4, & 5 HATCH ENDS 27' x 50"
- N^o 3 HATCH FORWARD END 14' x 40"

Windless, Windies, Meats +
Steering gear supported
to Surveyors Satisfaction.



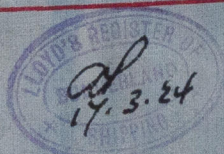
Pillars to Surveyors
Satisfaction.

2/27/24

DOXFORDS

582 & 584

PROFILE & DECK PLANS



Motorskip "Cinemoot" no 582

GUNDERLAND RPT. NO. 28918

Motorskip westmoor no 584

GUNDERLAND RPT. NO. 28940

W92-0074



© 2020

Lloyd's Register
Foundation