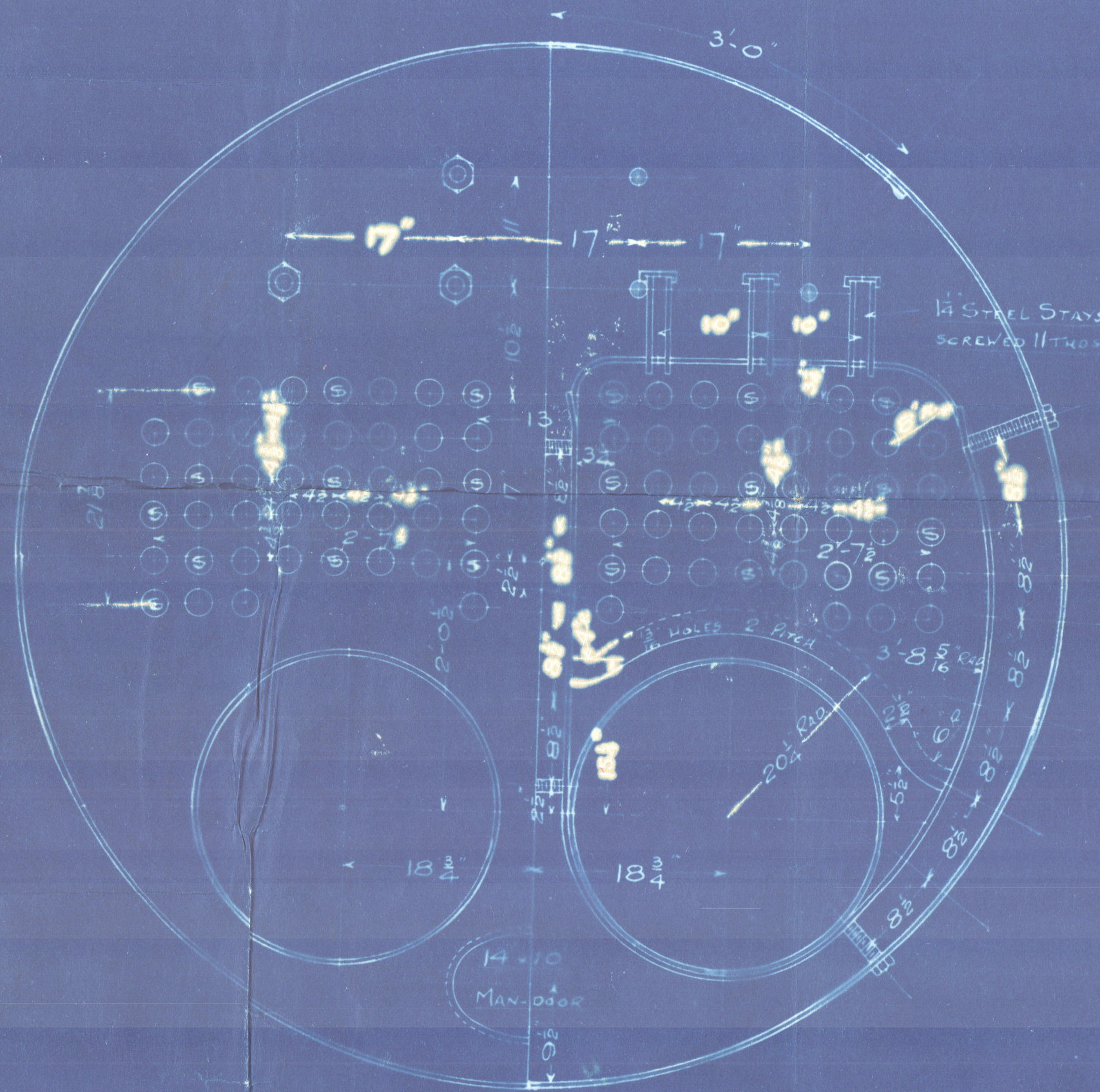


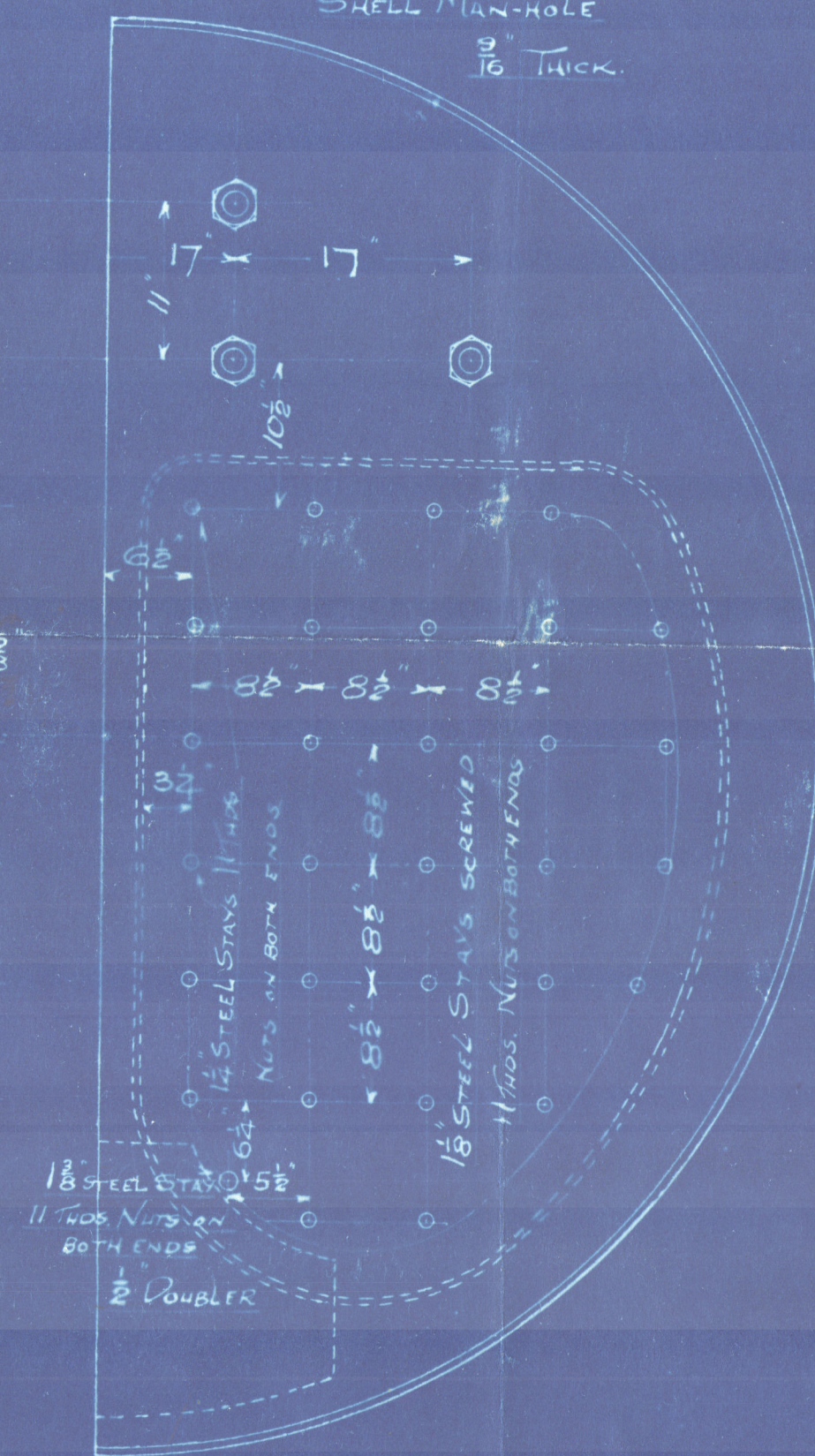
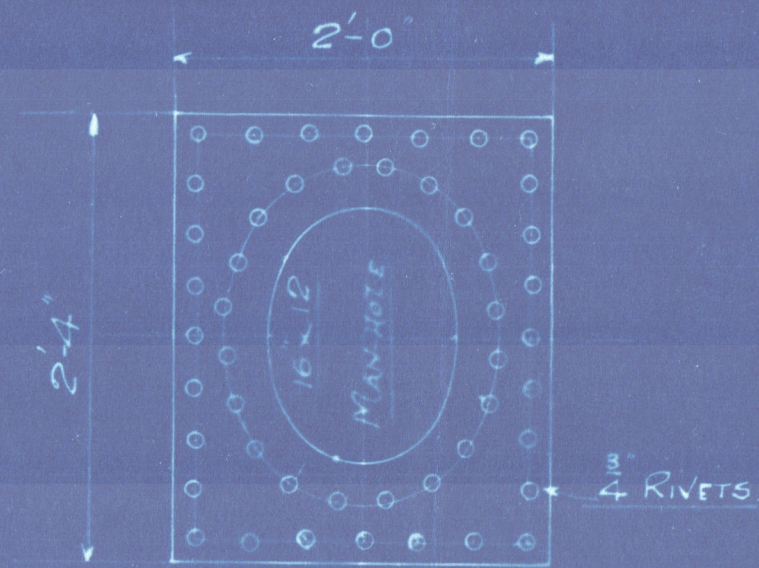
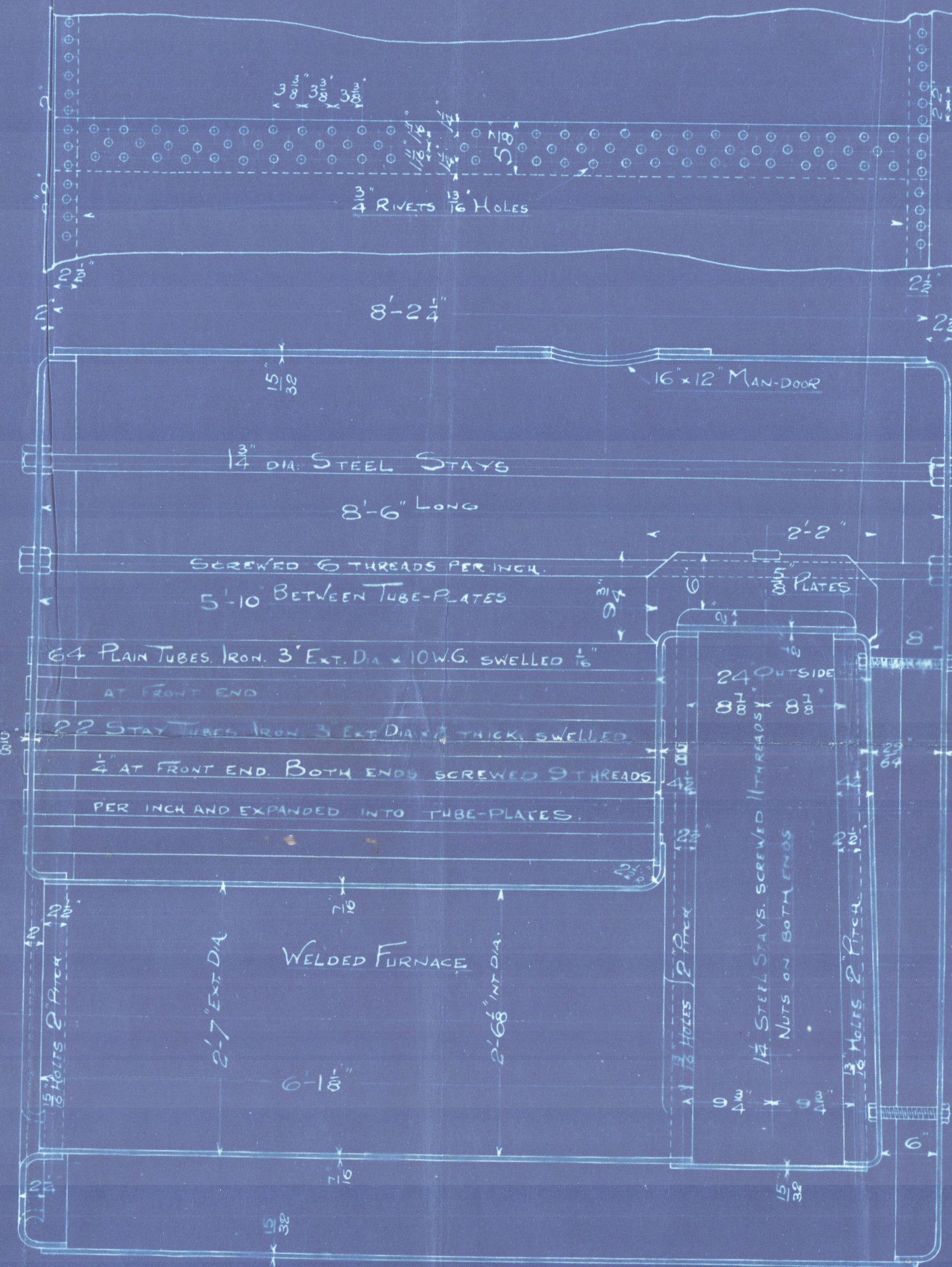
2/5/07

SHELL AND COMPENSATING RING - 28 TO 32 TON STEEL
LONG STAYS - 27 TO 32 TON STEEL
PLATE PERCENTAGE = 75.9
RIVET " = 83



HEATING SURFACE

TUBES	394 f
COMB. CHAMBS.	85 f
FURNACES	50 f
TOTAL	529 f



MARINE BOILER 8'-6" DIA x 8'-6" LONG.

80/85 W.P. ——— LLOYD'S SURVEY ———

SCALE 1" = 1 FOOT. ——— 30th APRIL 1907 ———

JOB N° 820

TRACING N° 194



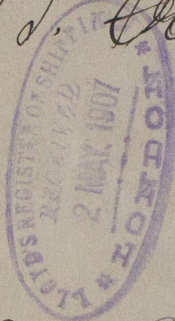
© 2020 Lloyd's Register Foundation

RETAIN

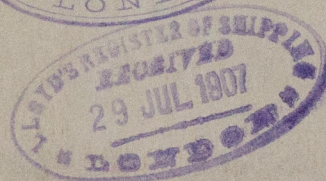
Craig & Lawsons

N^o 820

J. J. "Craigforth"



Gl. Rpt. N^o 26003.



© 2020

Lloyd's Register
Foundation

W946-0038