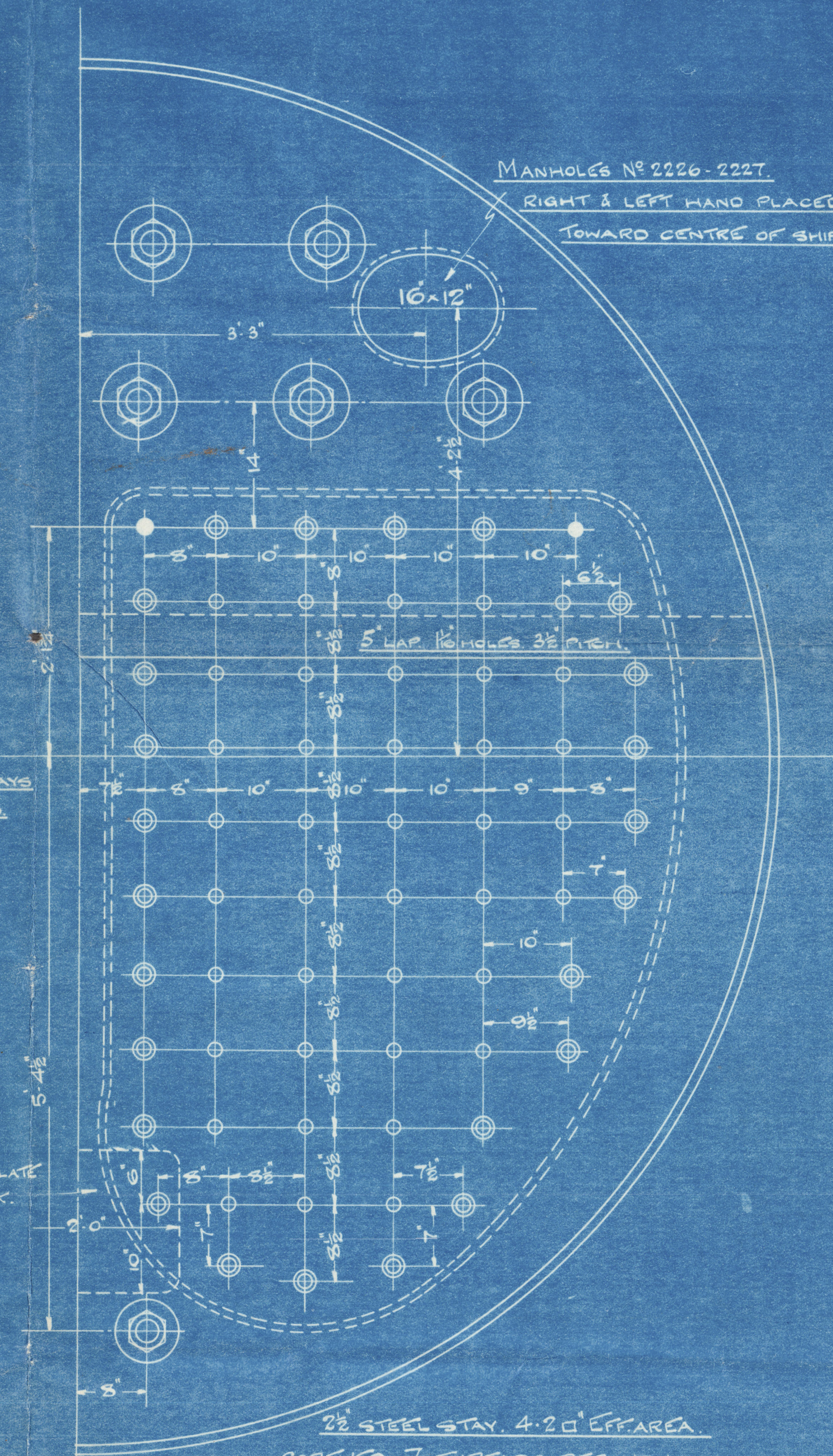
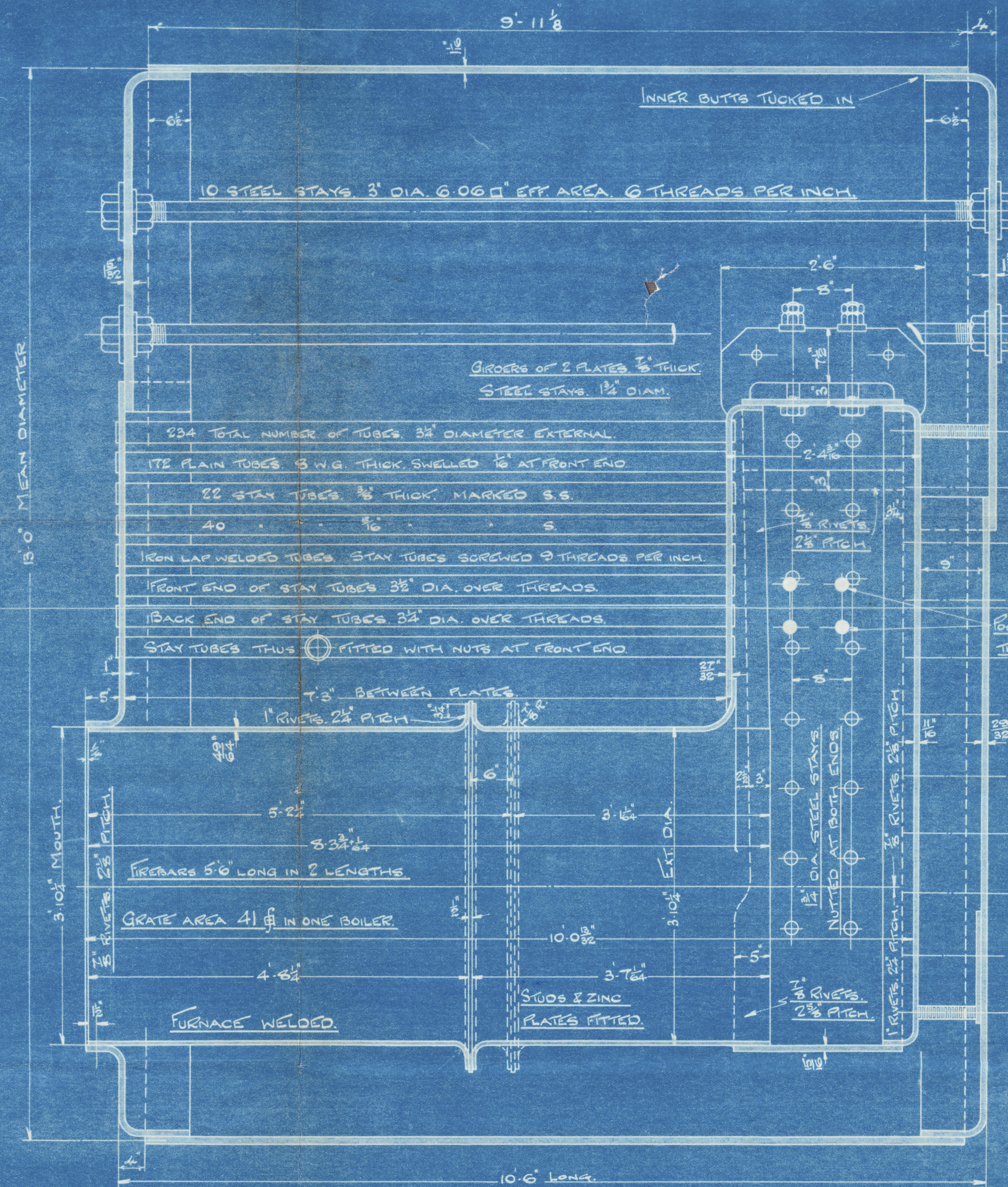
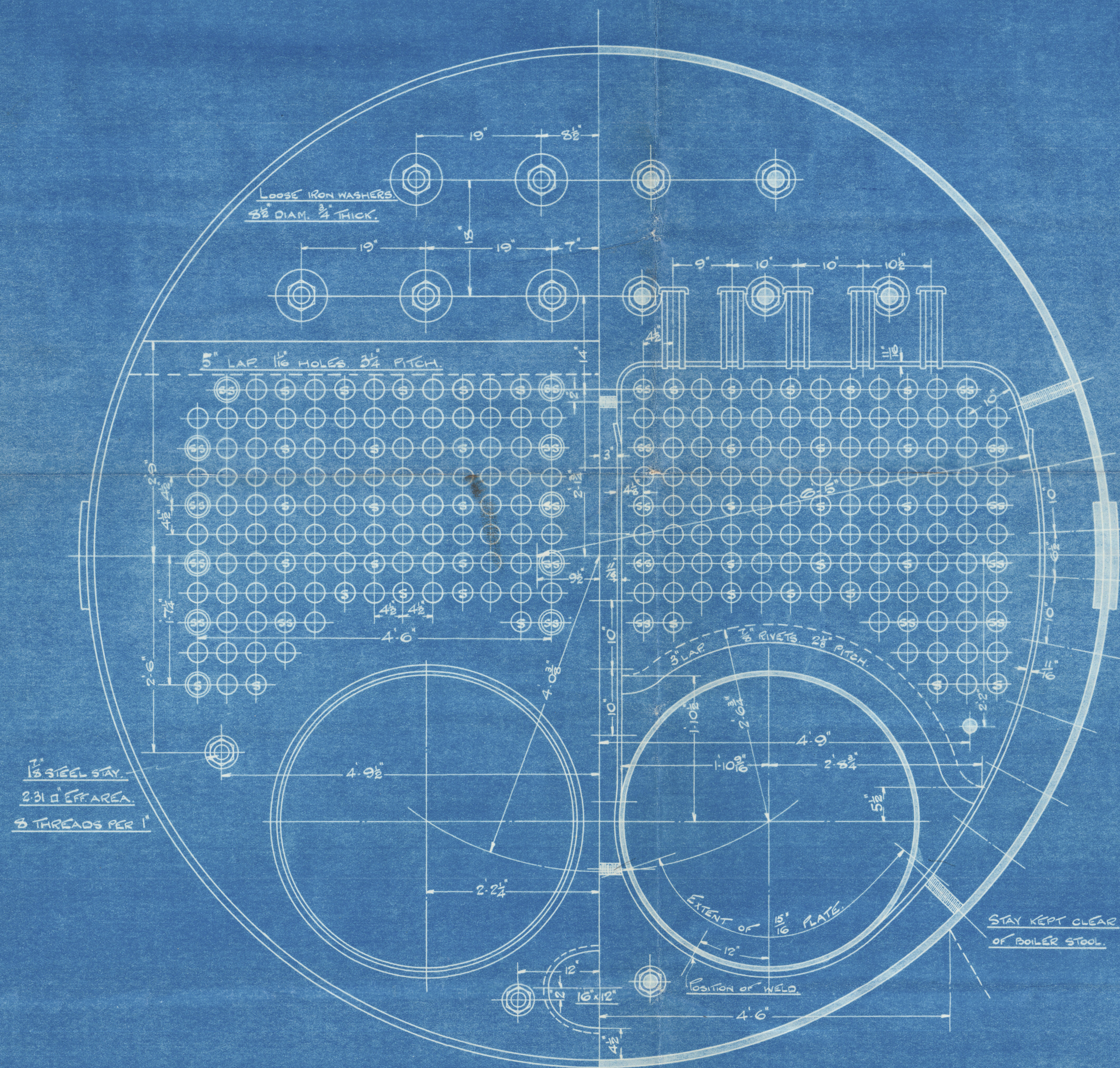
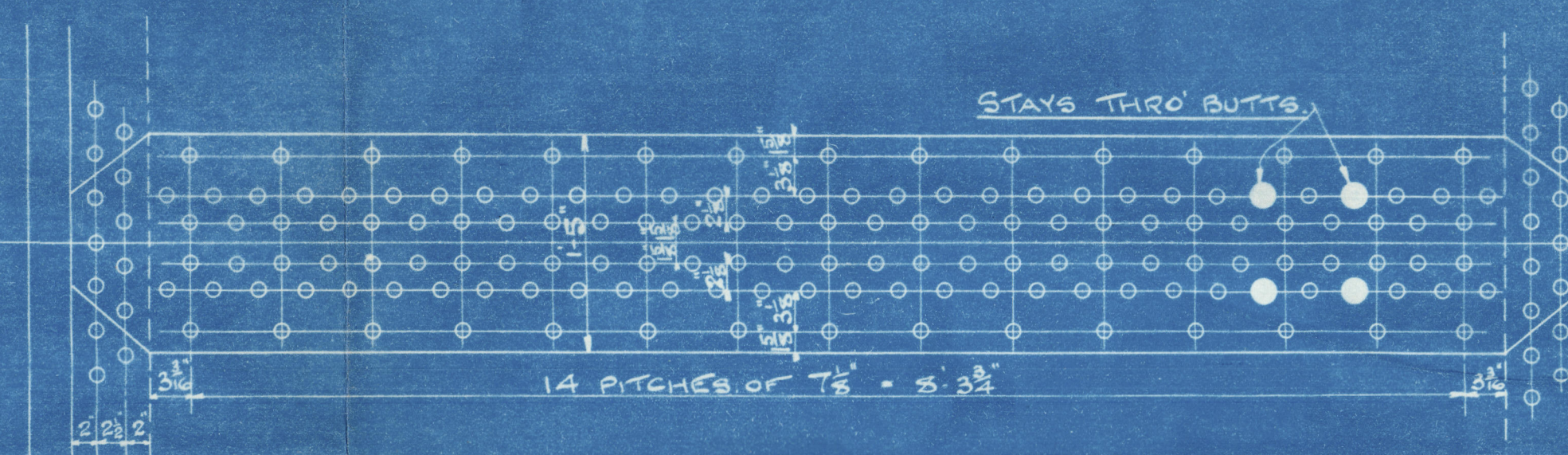


24/11/13

HEATING SURFACE	
TUBES	1443
FURNACES	87
CHAMBERS	163
FRONT TUBE PLATE	23
TOTAL FOR 1 BOILER	1721
" " 2 "	3442

LONGITUDINAL SEAMS. 1" DIA. RIVETS. $\frac{1}{16}$ " HOLES. $\frac{7}{8}$ " PITCH.
 CIRCULAR SEAMS. $\frac{1}{16}$ " DIA. RIVETS. $\frac{1}{4}$ " HOLES. $3\frac{1}{2}$ " PITCH.
 INNER BUTT STRAP 1" THICK. OUTER BUTT STRAP $\frac{1}{16}$ " THICK.



No 2226. To PASS LLOYD'S REQUIREMENTS FOR A WORKING PRESSURE OF 130 LBS PER SQ. INCH.

No 2227. British Corporation

TENSILE STRENGTH OF SHELL PLATES, BUTTS & MANHOLE RING.	
END PLATES & INTERNAL PLATES.	26 - 30
LONGITUDINAL STAYS.	28 - 32
SCREWED STAYS.	26 - 30
GIRDER PLATES.	26 - 30



BOILERS No M 2226. 2227

2 BOILERS.

SCALE 1 INCH = 1 FOOT.

No 2226. For MESSRS THE NORTH OF IRELAND SHIPBUILDING Co. SS No 59

No 2227. For MESSRS THE GREENOCK & GRANGEMOUTH DOCKYARD Co. LTD. SS No 360

DRAWN BY J.H. G.V.B.

CHECKED BY J.H. G.V.B.

PASSED BY

DRAWING No. 6346

Ans.
24/11/13
J.P.R.
24/11/13

Richardsons, Westgarth & Co. Ld.

Main Boilers

N^o: 2226

for

The North of Ireland

S. B. Co. SS N^o 59

8/8 Brake

Belfast 7428

180 lbs W. P.

No. 5264
LLOYD'S TEST
360 lbs
27. 3. 14 J.K.

Mdb.

Rpt. 85 lbs.



RETAIR

© 2021

Lloyd's Register
Foundation