



# SCOTIA ENGINE WORKS BOILER

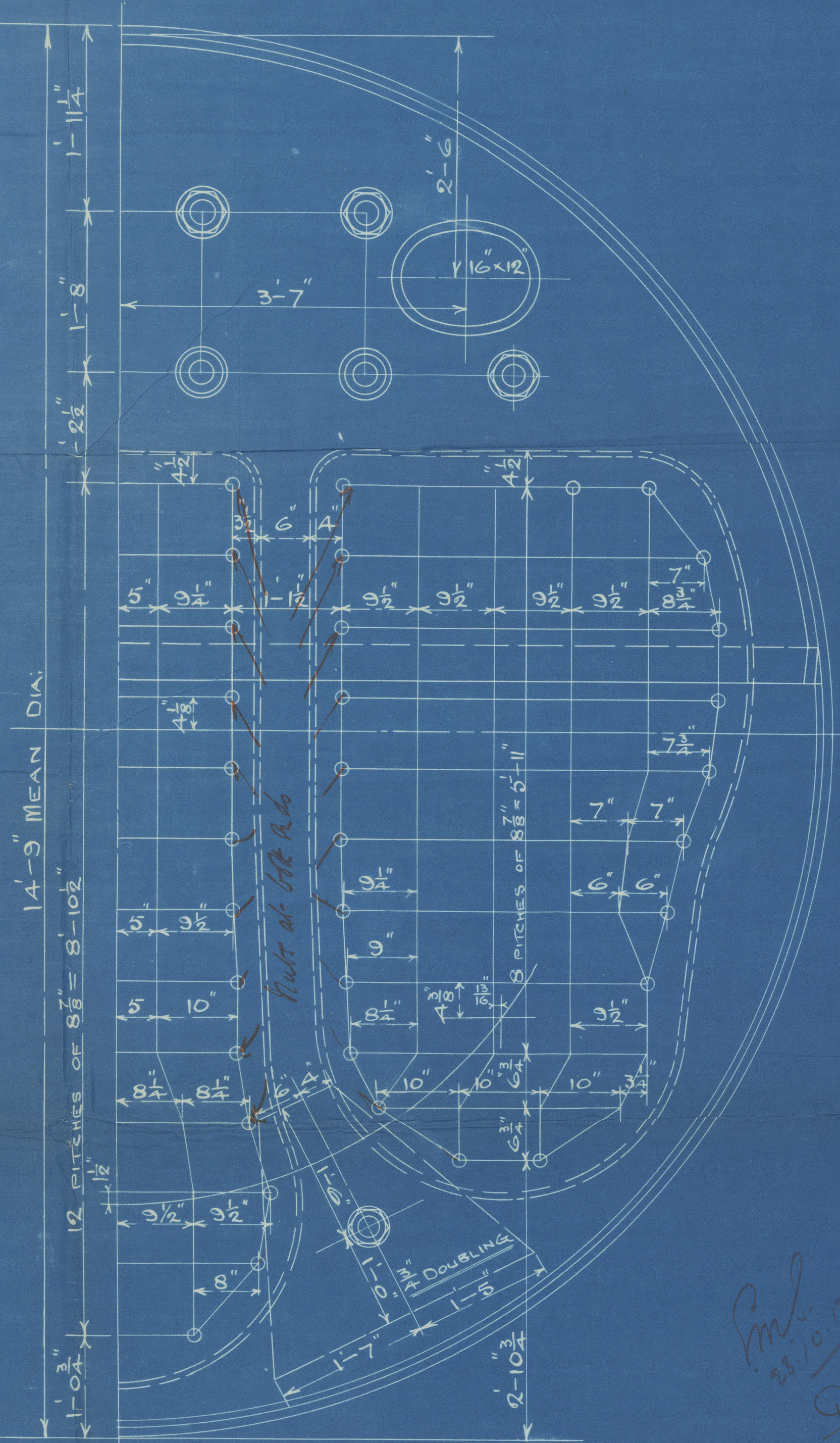
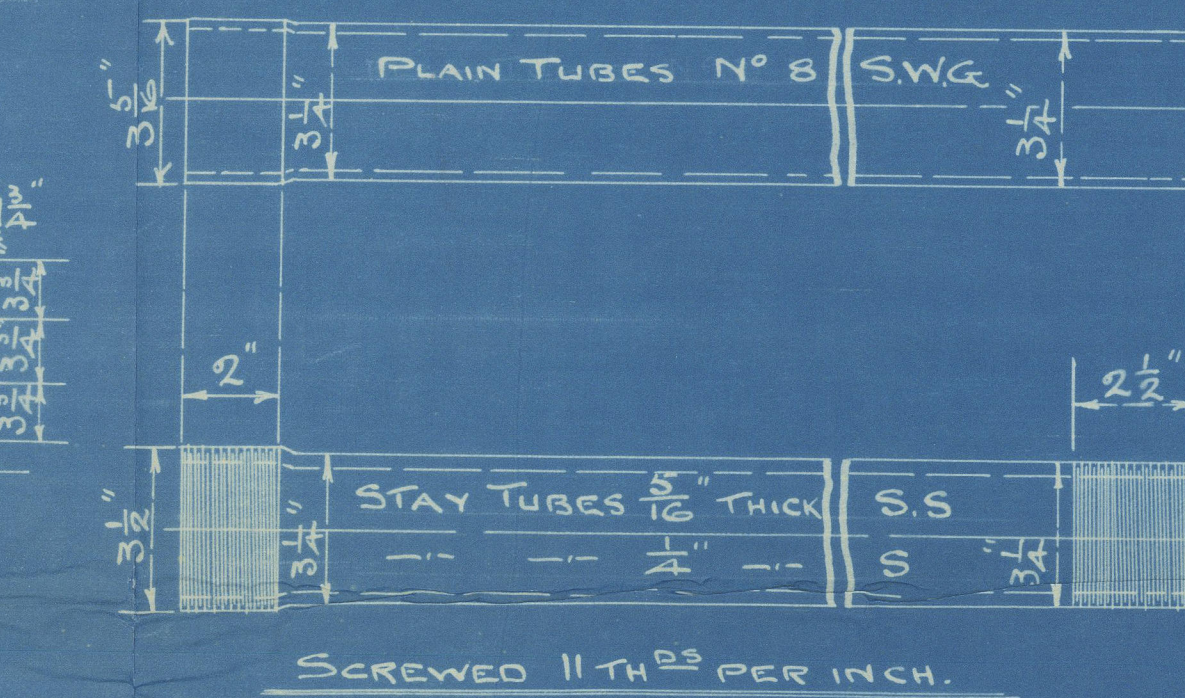
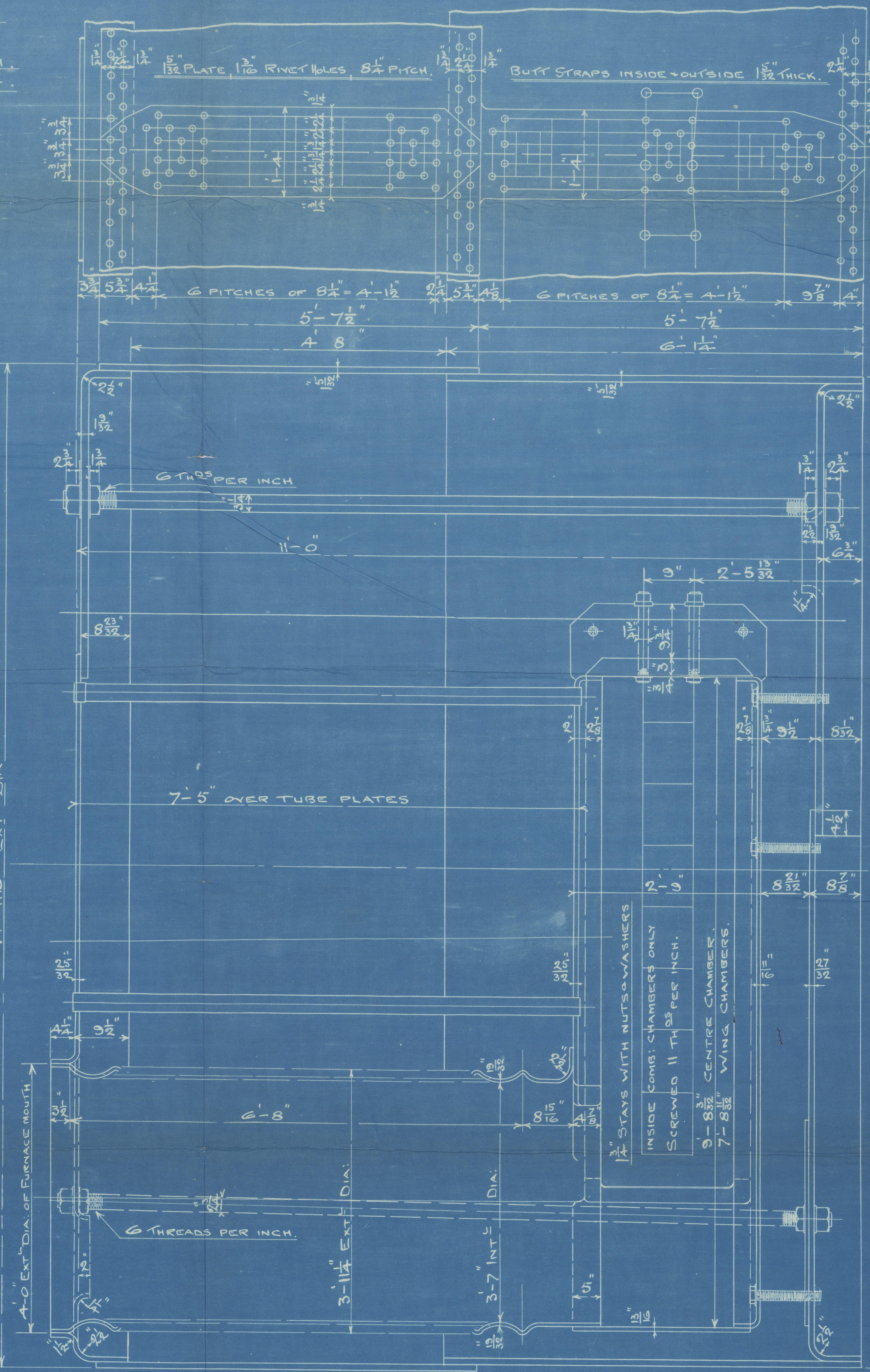
24/10/13

SCALE: 1 INCH TO ONE FOOT  
WRITTEN DIMENSIONS ONLY TO BE TAKEN

WORKING PRESSURE 180 LBS PER SQ INCH.

TOTAL HEATING SURFACE  
WITHOUT FRONT TUBE PLATES  
= 6620  $\text{ft}^2$

TENSILE STRENGTH OF SHELL PLATES + BUTT STRAPS  
28 TO 32 TONS PER SQ INCH.  
GIRDER PLATES + LONGITUDINAL STAYS  
28 TO 32 TONS PER SQ INCH.  
ALL OTHER PLATES, STAYS + RIVETS 26 TO 30  
ALL PLATES, STAYS + RIVETS OF STEEL.  
ALL TUBES OF WROST IRON.  
ALL RIVET HOLES DRILLED IN PLACE.  
RIVETING HYDRAULIC.



N° S 2103  
N° OFF 3

STAYS IN COMB. CHAMBER BACKS  
18 STAYS WITH NUTS + WASHERS INSIDE COMB. CHAMBERS ONLY.  
NUTS AT BOTH ENDS  
ALL SCREWED 11 THREADS PER INCH.

Final  
28/10/13  
JWR  
23/10/13



SUNDERLAND.

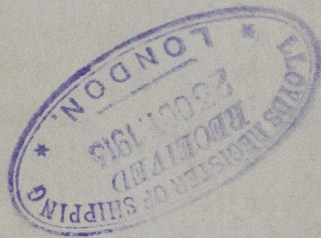
Richardson, Westgarth & Co. Ltd.

3 Bales No. 2103.

180 lbs

for  
W. Pickering & Son's

No. 185



No. 3223
LLOYD'S TEST
360 lbs.
J.T.F. 17.6.14

No. Beemah

Sld Rpt no 26242

RETAIN



© 2020

Lloyd's Register  
Foundation

W954-0124



WILLIAM LLOYD GIBBS JUNIOR  
JANUARY 1871

*Handwritten notes in cursive script, including the word "Lloyd" and other illegible text.*

