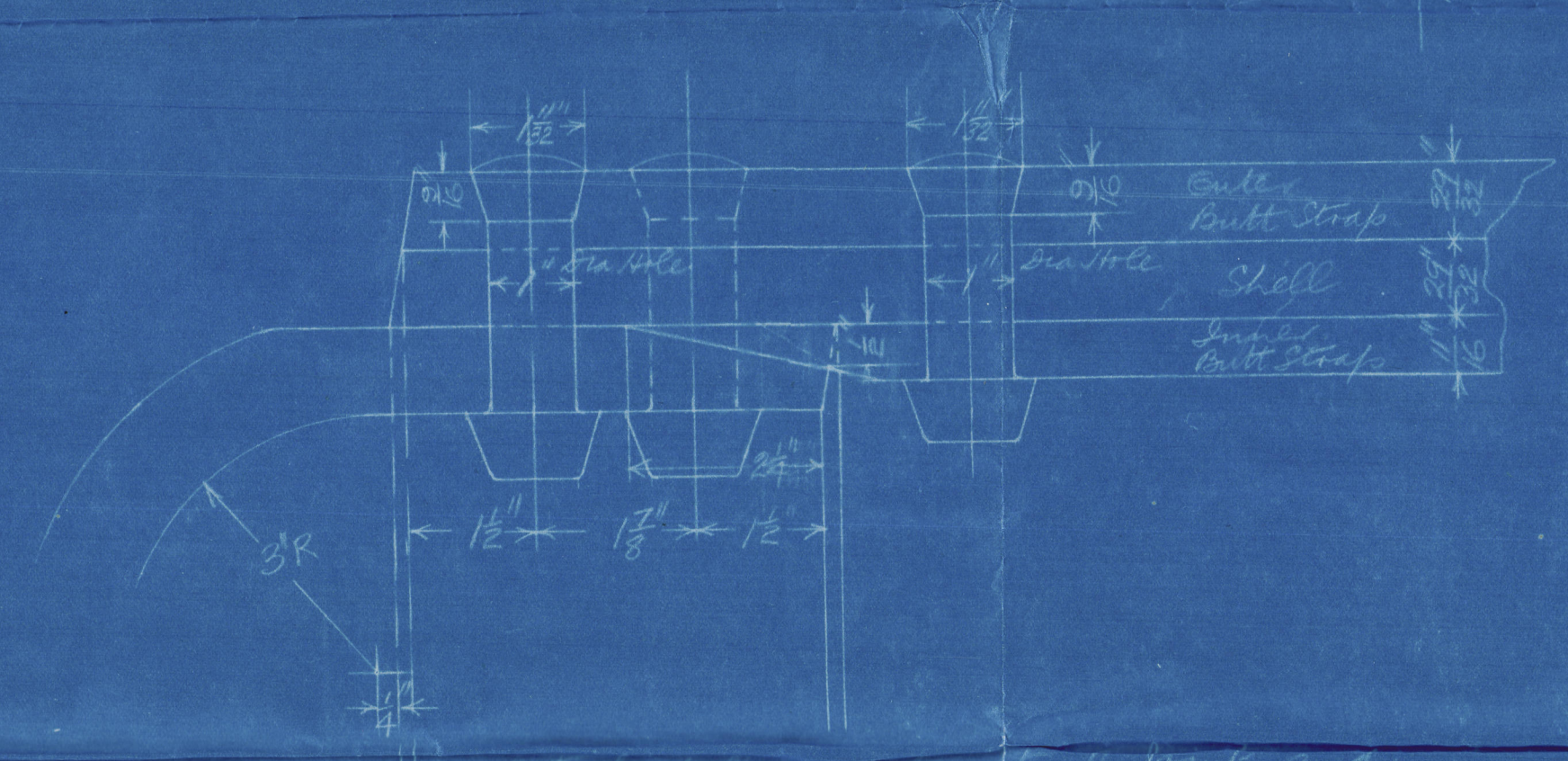
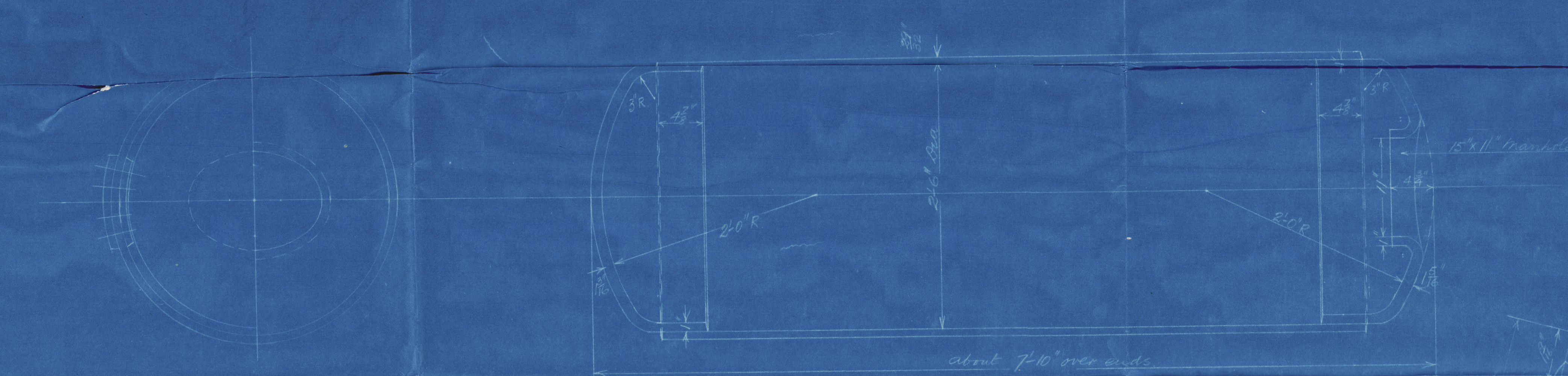
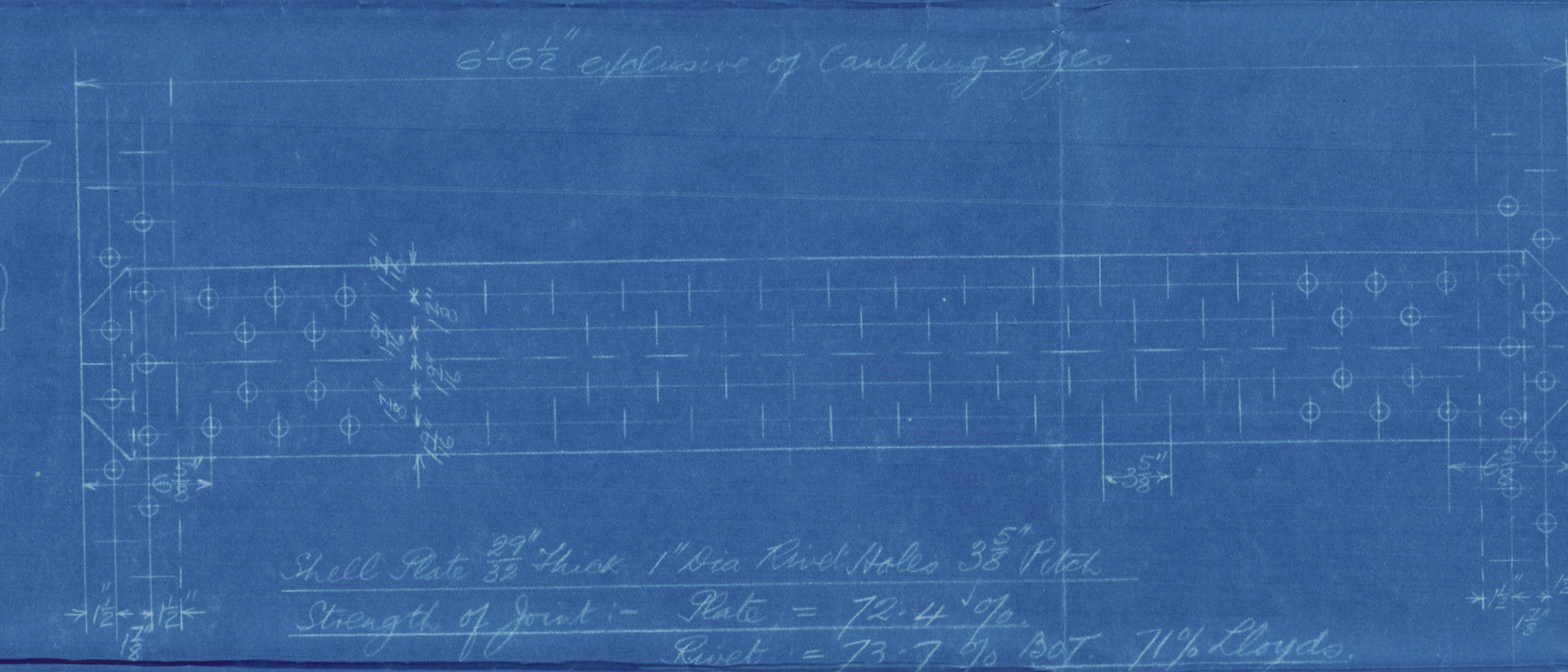


20/8/15



Detail of circumferential joint and locking in of inside butt strap.
Half Size

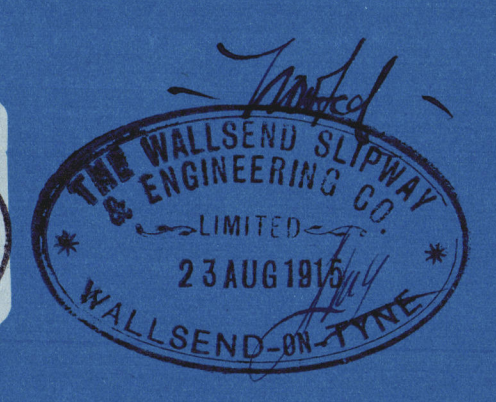
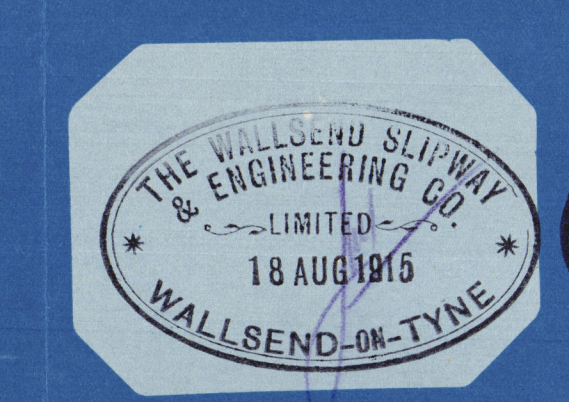


Detail of longitudinal joint
Half Size

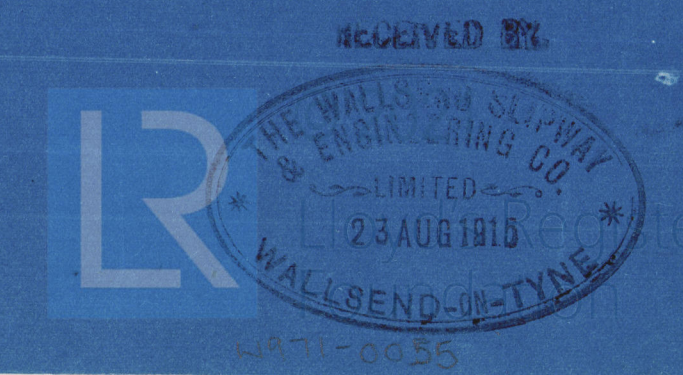
Shell Plate $\frac{3}{32}$ " thick, 1" dia Rivet Holes $3\frac{5}{8}$ " Pitch
Strength of Joint:- Plate = 72.4 $\frac{1}{2}$ "
Rivet = 73.7 $\frac{1}{2}$ " Rivet 71% Lloyd's.
Outside Butt Strap $\frac{3}{32}$ " thick, Inside Butt Strap $\frac{1}{16}$ " thick
Circumferential joint Rivets Pitched 26 Pitch
of 3.73" in circumference 1" dia Rivet Holes
Tensile Strength of Shell Plates Butt Straps = 28 to 32 tons $\frac{1}{2}$ "
" " Ranged Plates = 26 to 30 " "
Shell hydraulic tested where practicable.
all holes drilled in place after bending
Working Pressure = 600 lbs per $\frac{1}{2}$ "
" " = 1200 " " "

CHECKED BY J.H.B.
DATE 12-8-15

Contract No 728
Starting Air Reservoir
To pass Board of Trade and
Lloyd's Requirements
Scale 1 1/2 inches = 1 foot
One Off



J.R.R.
20.8.15



"
H.M.S. "Abelia"
"

Air reservoir

600 lbs pressure

Wallace & Shipman & Eng Co

Newcastle 19/8/15



In Se. "ABELIA"
NEWCASTLE ON TYNE.

Report No. 68055



© 2021

Lloyd's Register
Foundation