

SS. N° 931 M.

MIDSHIP SECTION.

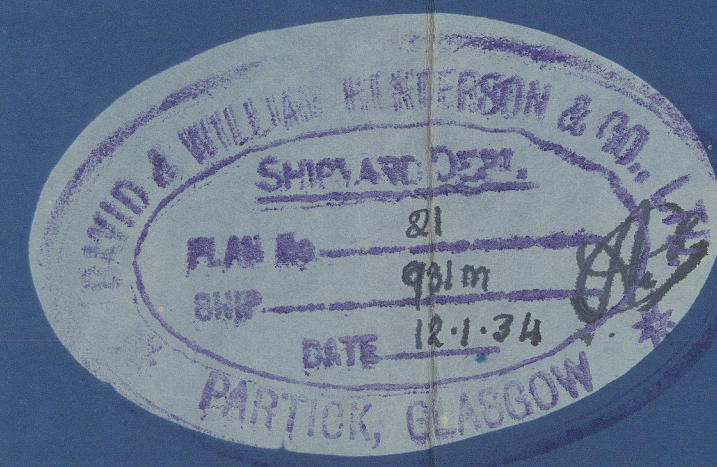
Scale: $\frac{1}{2}$ " = 1 Foot

DIMENSIONS. 412'-0" x 56'-0" x 30'-7" MLD. TO UPPER DK.

TO CLASS 100 A1 AT LLOYDS. FS VESSEL. 55% ERECTIONS. HATCHES 22'-0" WIDE.

BRIDGE DECK HATCH 20'-0" WIDE

— ALL BULB ANGLES N.B.S. —



D. = 30.58
L x D = 12558.06
L x (B + D) = 35640.96
L x D = 13.44 to U.D. 9.65 to B.D.
d for MARGIN 22.5 to U.D. 14.00 to 2nd DECK.
d for FRAMES 22.5 to U.D. 16.65 to 2nd DECK.

— EQUIPMENT NUMERAL —

L x (B + D) = 35641
POOP 45 (10 x 41.03) = 314
BRIDGE 45 (11.25 x 140.18) = 1162
FORECASTLE 45 (9.0 x 44.54) = 301
BRIDGE DECK CASING 5 (4 x 40.5) = 244
SALOON HOUSE 5 (4.5 x 31) = 116

— EQUIPMENT —

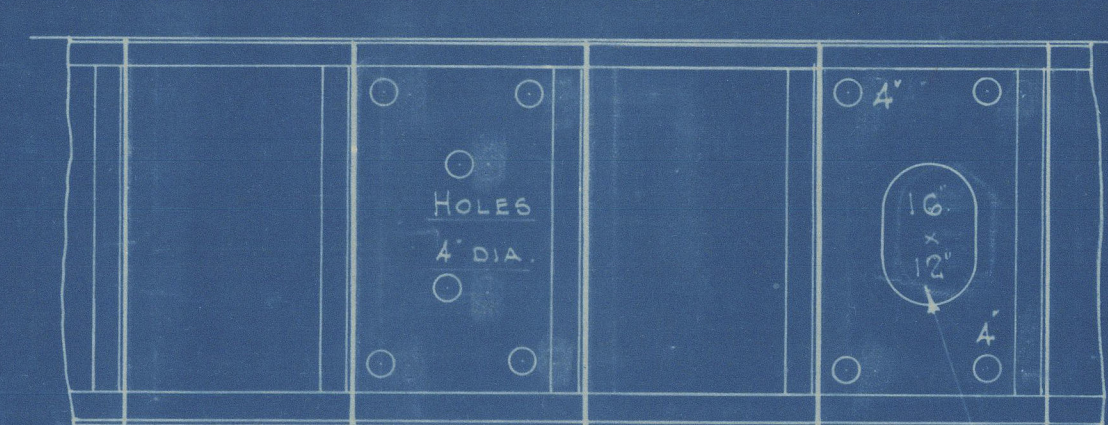
3 BOWER ANCHORS. 64 B4 CENTS EACH. STOCKLESS.
1 STREAM ANCHOR. 18 CENTS. EX STOCK.
240 FATHOMS OF $\frac{3}{16}$ " STUD CHAIN CABLE.
90 FATHOMS OF $\frac{1}{16}$ " STREAM CHAIN OR 5 STEEL WIRE. 6" x 12 FLEXIBLE.
120' OF $\frac{1}{2}$ " STEEL WIRE TONLINE. 6" x 24 SPEC. FLEXIBLE.
2 OF 30 FATHOMS 8 HEMP OR 2 $\frac{1}{2}$ " STEEL WIRE. HANGERS 6" x 24 SPEC. FLEXIBLE.
2 OF 90' OF 4" HEMP OR 2 $\frac{1}{2}$ " WAFES. Do Do.

— FRAMING —

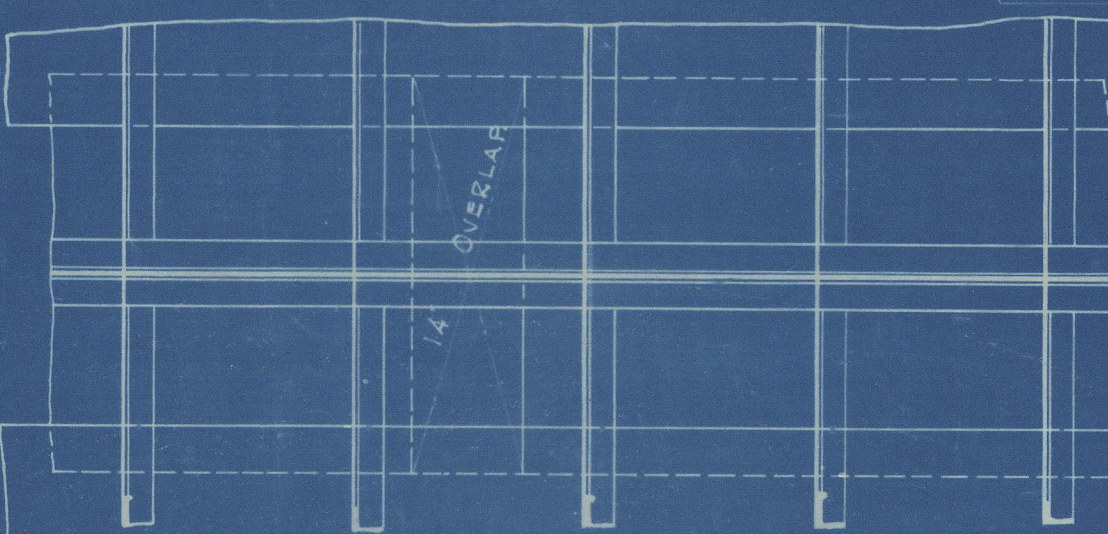
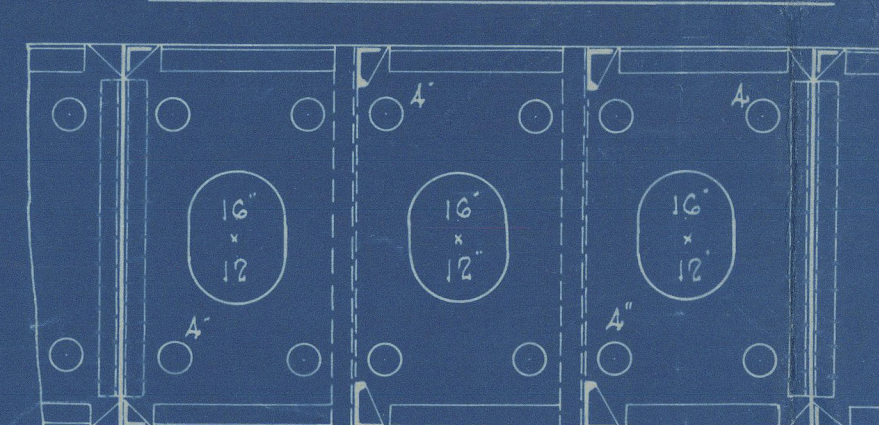
SIDE FRAMES SPACED 28 1/2" APART 24' FORD 1/2" LEN. 24' IN PEAKS.
" 15' x 4' x 4' x 4" TO UPPER DECK.
" 8' x 3 1/2" x 55' B.A. IN PEAKS.
" 8' x 3 1/2" x 35' B.A. IN POOP. 24' IN EDGE ON ALTERNATE FR. SCARPHED TO MAIN FRAME.
AND CARRIED DOWN TO 2nd DECK IN WAY OF SAME, SCARPHED TO MAIN FRAME.
REMAINDER OF FRAMES BETWEEN 2nd & UPPER DECK 8' x 3 1/2" x 35' B.A. SCARPHED.
ALL x 66' IN PERMANENT BUNKERS.
HOLD FRAMES IN WAY OF 2nd DECK 10' x 3 1/2" x 40' B.A. + 66' IN B.S. & BUNKERS.
INTERMEDIATE FRAMES IN POOP 5' x 3' x 36' B.A. UNATTACHED.
" IN FORECASTLE 6' x 3' x 36' B.A. SCARPHED.
FANTING FRAMES ABAFT COLLISION BULKHEAD FOR 22' O' ABAFT STEEL IN CONJUNCTION WITH BULB ANGLE FACE BARS. 15' x 4' x 4' x 60' C. WITH 4' x 4' x 60' REVERSE BAR.
" AT PEAK BULKHEAD = 35' O'

STEM 10' x 2 1/2"
STERNPOST 10 1/2" x 4 1/4"
RUDDERPOST 10 1/2" x 4 1/4"

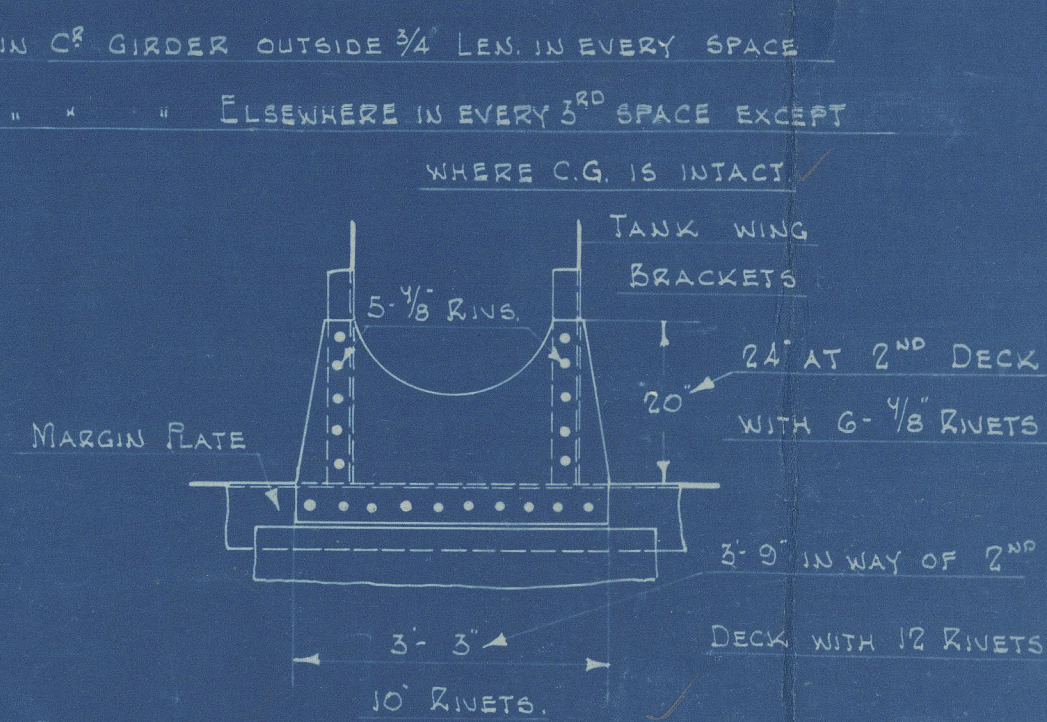
ELEVATION OF C⁸ GIRDER EXCEPT WHERE INTACT.



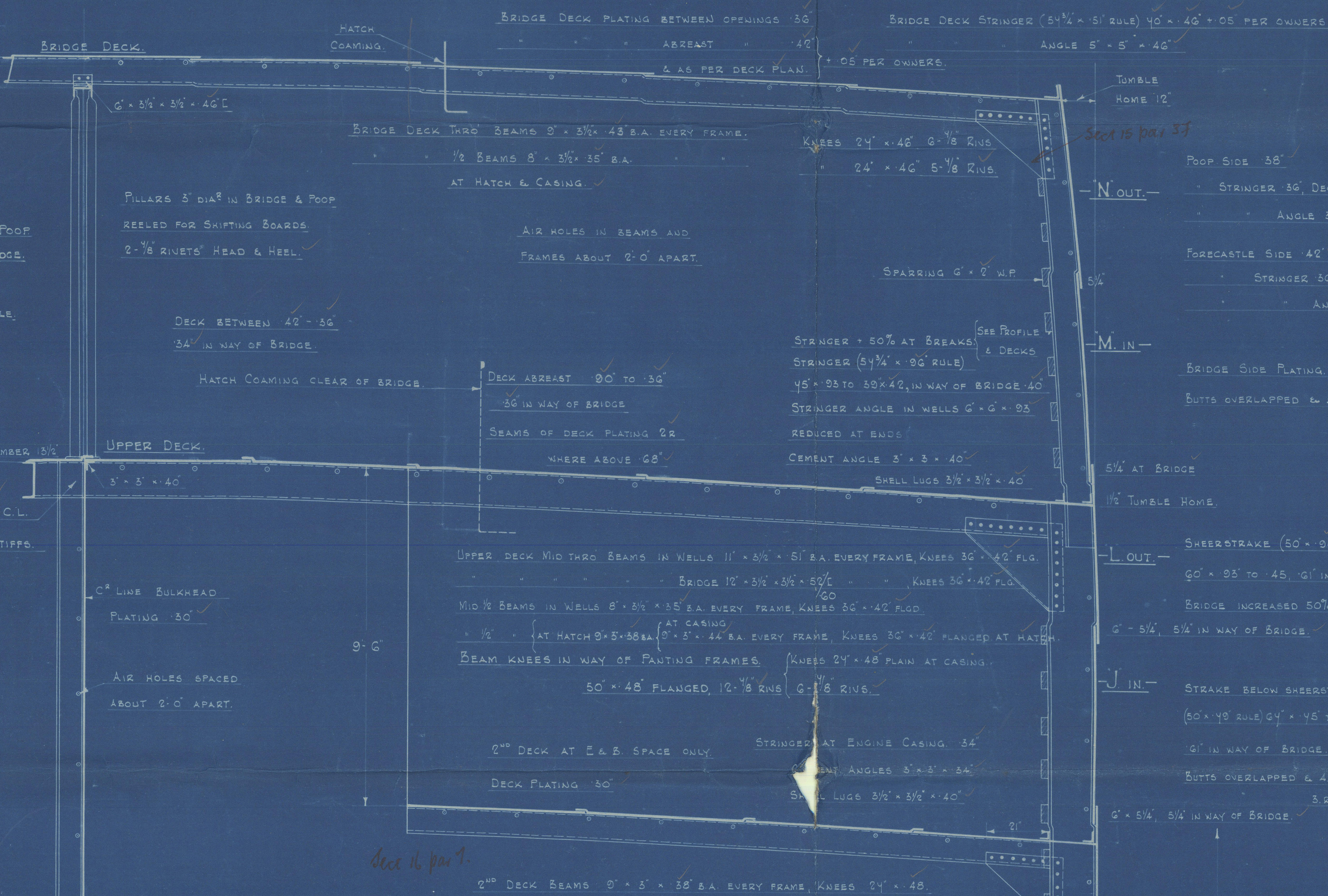
ELEVATION OF SIDE GIRDER



PLAN OF KEEL PLATE LAPS

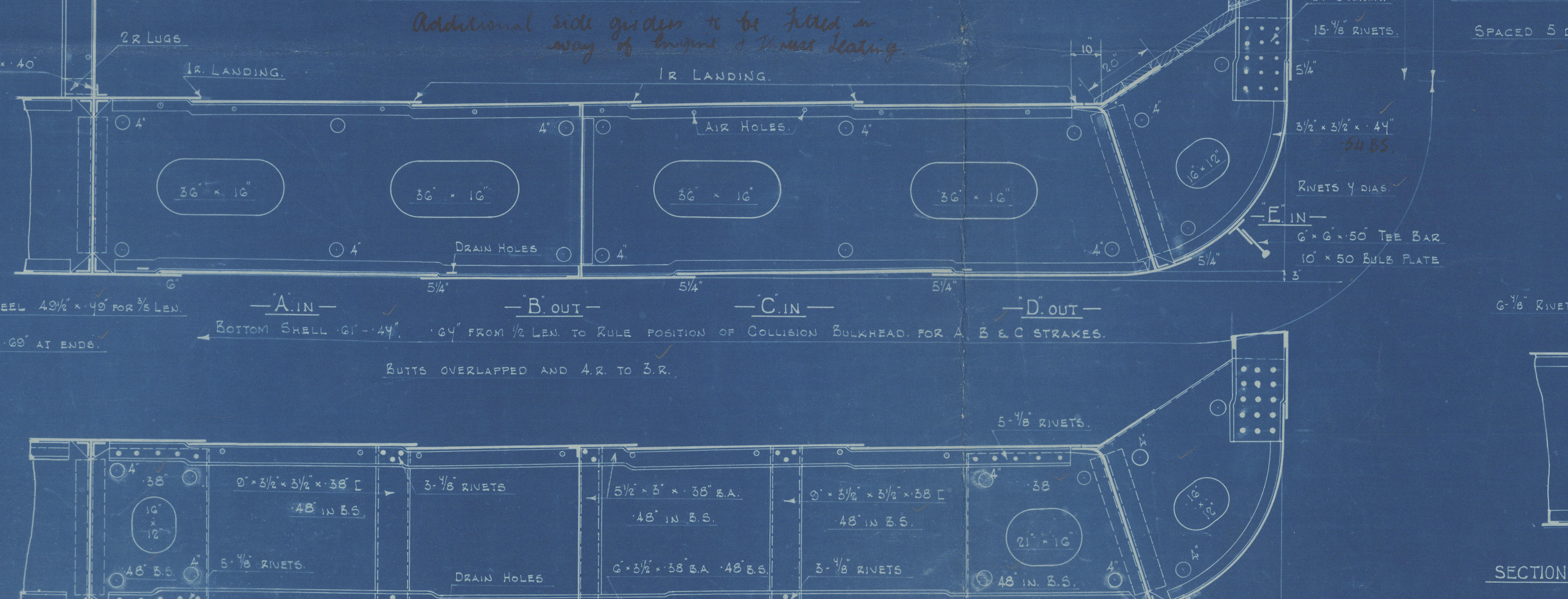


DETAIL OF MARGIN GUSSET PLATE



— DOUBLE BOTTOM —

CENTRE GIRDER 40' x 50' to 40' 50' B.S. MARGIN (RULE 3 1/4") x 50' 50' B.S.
SOLID FLOORS EVERY 3" FRAME, ON EVERY FRAME IN B.S. UNDER 8 BEARERS, FOR 1/2" LENGTH.
FLOORS 38 (46' AT WT DIVISION EXCEPT 28' B.S. WITH STIFFS AS PER TABLE 48, SPACED 30" APART) FLOORS 55 IN B.S. 40' B.S. PER SIDE GIRDERS & BRACKETS INSIDE TANK, 38' (46' B.S. + 05 PER OWNERS) 40' B.S. PER OWNERS. (OWNERS, INC. WT. FLOORS TANK C⁸ STRAKE 61' x 50' to 40' 50' B.S. REMAINDER OF TANK TOP 40' to 38' 50' B.S. (50' B.S. + 02 PER OWNERS)
TANK TOP CEILED UNDER HATCHES. NO OIL FUEL IN DOUBLE BOTTOM.
TANK SIDE BRACKETS (24" RULE) 45' x 4' in way of UPPER DECK, (44' in B.S. + 06 PER OWNERS) 54' B.S.
PLATE GUSSETS ON EVERY FRAME 40' 50' B.S. CONTINUOUS PLATE IN WAY OF FANTING FRAMES.
C⁸ GIRDER BOTTOM ANGLES 4' x 4' x 52' 48' OBLE TOP ANGLES 3 1/2" x 5 1/2" x 48' 48' OBLE 50' IN B.S.
" VERTICAL ANGLES 5' x 5' x 40' (UNDER ENGINE SPACE) TRUSTAND 5' x 5' x 50' UNDER 8 BEARERS 3 1/2" x 5 1/2" x 40' IN HOLDS. 50' IN B.S. (108 PER OWNERS IN B.S.)
MARGIN SHELL ANGLES 3 1/2" x 3 1/2" x 50'.
TANK FRAMES 3 1/2" x 3 1/2" x 40' (5' x 5' x 40' FOR 1/2" LENGTH. (SEE SIDE GIRDER ATTACHMENTS) 15' CENTRES.
TANK KEY FRAMES 4 1/2" x 3 1/2" x 40' OBLE IN B.S. TO BEYOND GIRDER OUTSIDE ENGINE (SAT. UNDER THRU 3 1/2" x 5 1/2" x 40' DOUBLE 3 1/2" x 3 1/2" x 50' B.S. DOUBLE UNDER BOILER BEARERS. 3 1/2" x 5 1/2" x 40' ELSEWHERE. (24' x 44' IN B.S. SIDE GIRDER BOTTOM ANGLES 3 1/2" x 3 1/2" x 40' DOUBLE FROM 1/2" LEN. TO 1/2" LEN. FOR 1/2" LEN. OF 22' FRAMES) SPACE PER OWNERS TOP ANGLES 3' x 5' x 40' DOUBLE UNDER ENGINE (SEATING) 3 1/2" x 5 1/2" x 40' IN B.S. CLEAR OF VERTICAL ANGLES 3' x 5' x 38' 48' IN B.S. + 06 PER OWNERS) 51' IN B.S. PER OWNERS. (SEATING PER OWNERS. 50' B.S. MARGIN VERTICAL OUTSIDE ANGLES 5' x 5' x 44' SINGLE, 14' 1/2" RIVETS EACH WAY. 3 1/2" x 5 1/2" x 42' IN B.S. 54' IN B.S. INSIDE 5' x 3 1/2" x 42' SINGLE 3 1/2" x 3 1/2" x 42' IN B.S. 50' IN B.S.) SPARRING 6' x 2' W.P.



— SECTION AT BRACKET FLOORS —

SECTION WHERE 2nd DECK FITTED

Glasgow

Messrs. D. & W. Henderson & Co. Ltd.

Yard No 9317.

Amended Midship Section

Yhd

GLASGOW REPORT No. 54894

Loch Lomond

GLASGOW REPORT No. 54981



© 2020

Lloyd's Register
Foundation

W982-0041