

14.2.29

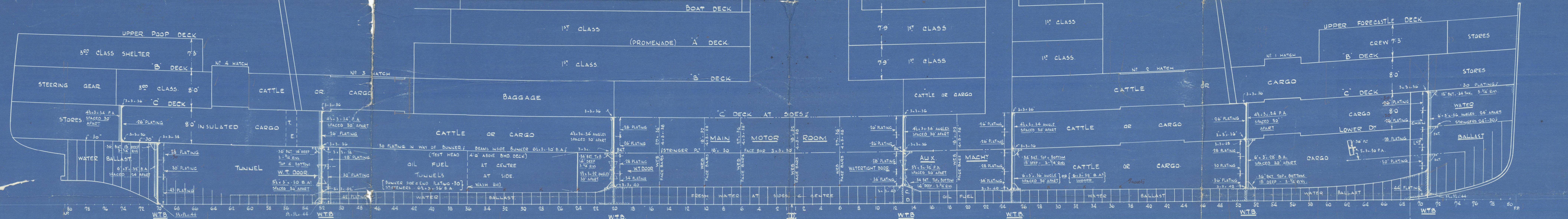
No 870.

WATERTIGHT BULKHEAD SCANTLINGS.

SCALE = 1" 0"

DIMS 320' 0" x 45' 6" x 19' 0" MLD TO UPPER D.K.

TO CLASS 100 A.1. WITH FREEBOARD - 14' 9" DRAFT MLD

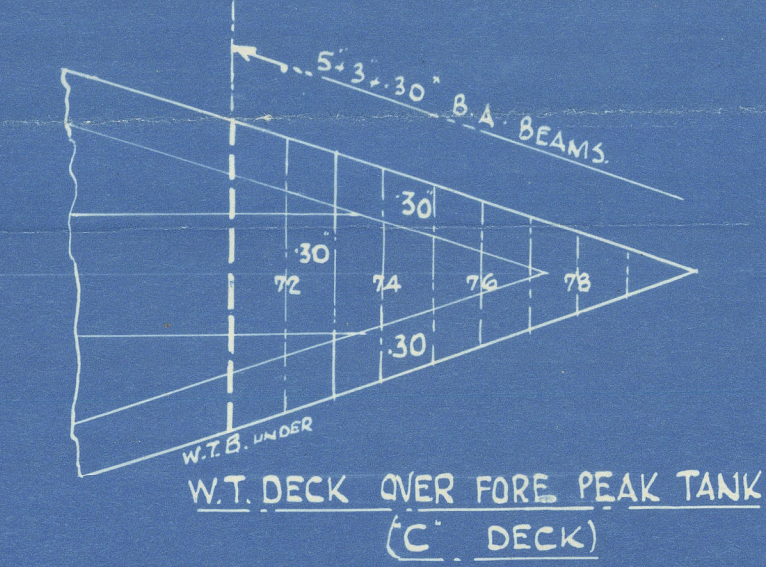
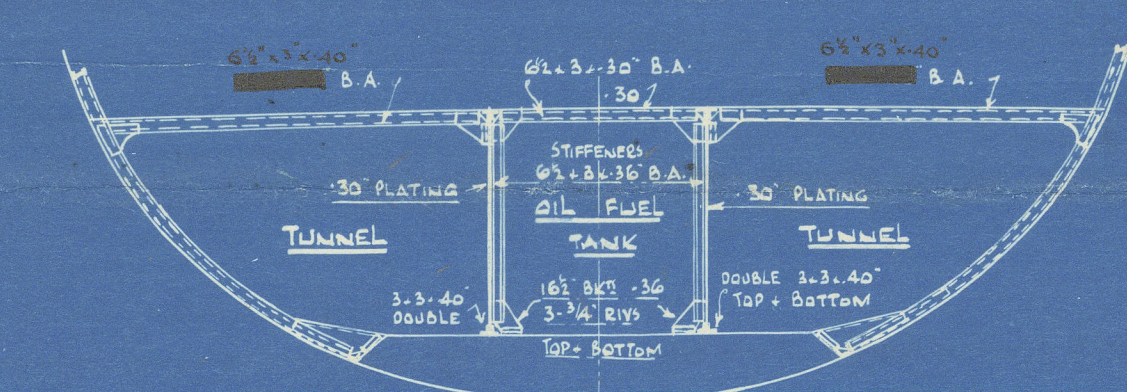
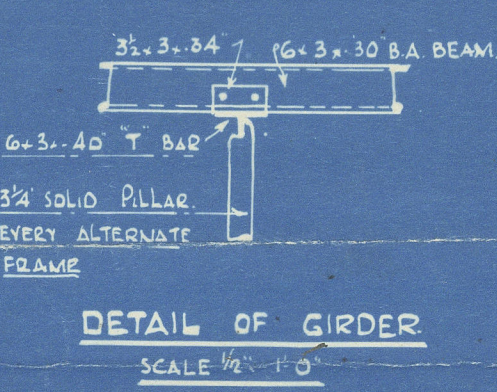
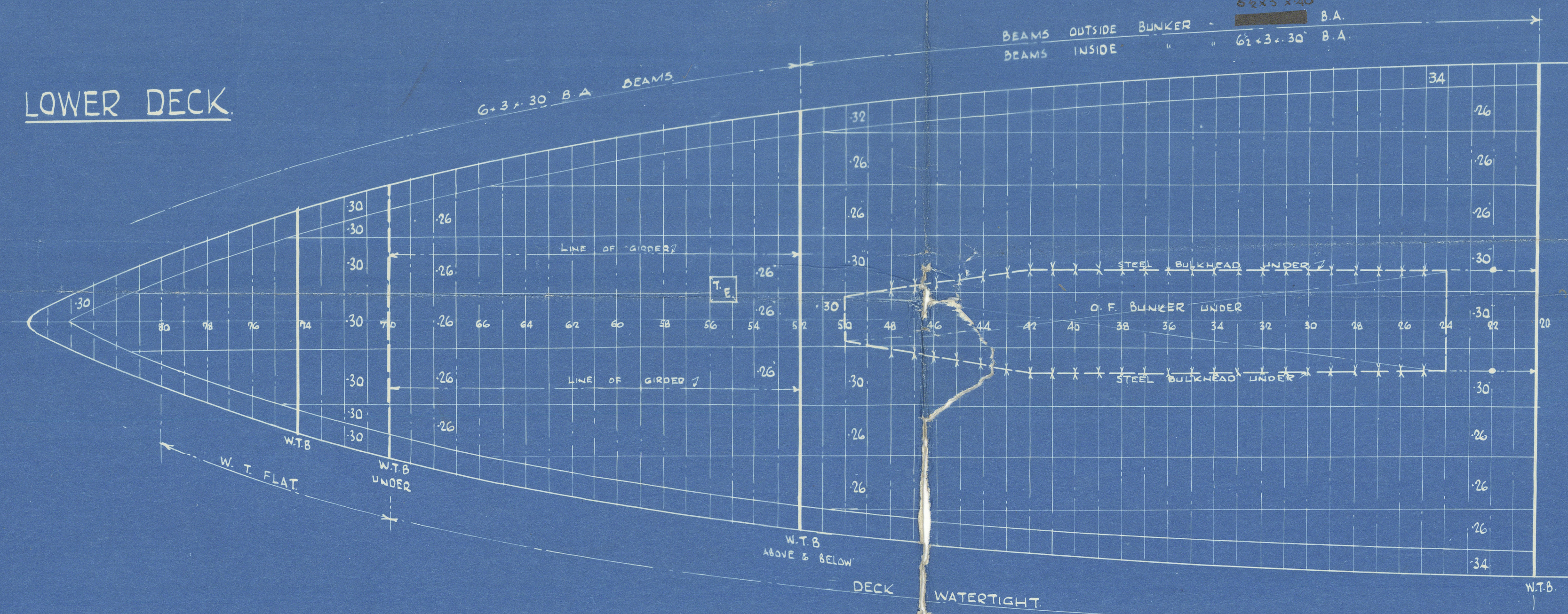


PEAK FRAMES - 5/8" x 3" x 28' B.A. FITTED TO UPPER POOP DECK

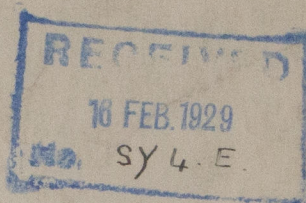
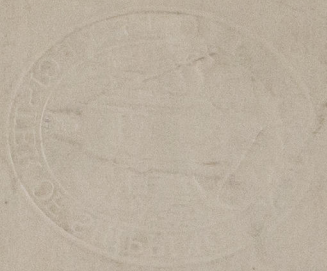
FRAME SPACING - 24" THROUGHOUT.
 FRAMING - 6" x 3" x 30' B.A. ON EVERY FRAME TO BRIDGE DECK
 5" x 3" x 30" ANGLE ON ALTERNATE FRAMES. BRIDGE TO PROMENADE & BOAT DECKS - SCARPHED 16" BELOW BRIDGE DECK.
 INTERMEDIATE FRAMES BETWEEN BRIDGE & PROMENADE DECKS - 12" x 2 1/2" x 26" ANGLE
 WHERE NO BOAT DECK.

PEAK FRAMES - 5/8" x 3" x 28' B.A. FITTED TO UPPER FORECASTLE DECK

LOWER DECK



W.J.
 14.2.29.



Harland & Wolff Ltd.

Nº 870

~~Watertight Bulkhead~~
Profile with Bhd Scantlings

S.S. "Innisfallen"

RETAIN



© 2020

Lloyd's Register
Foundation

W 984-0071