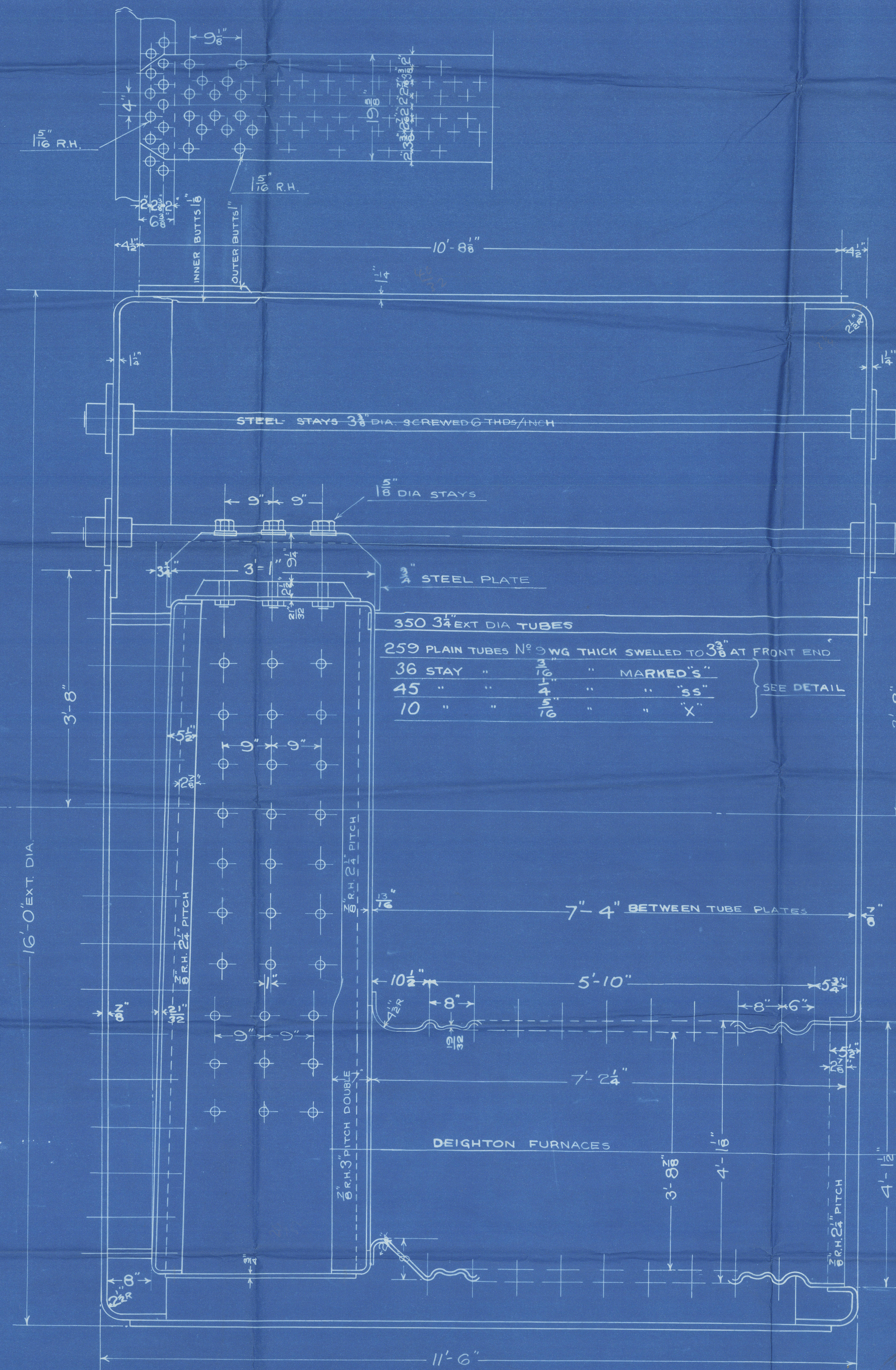
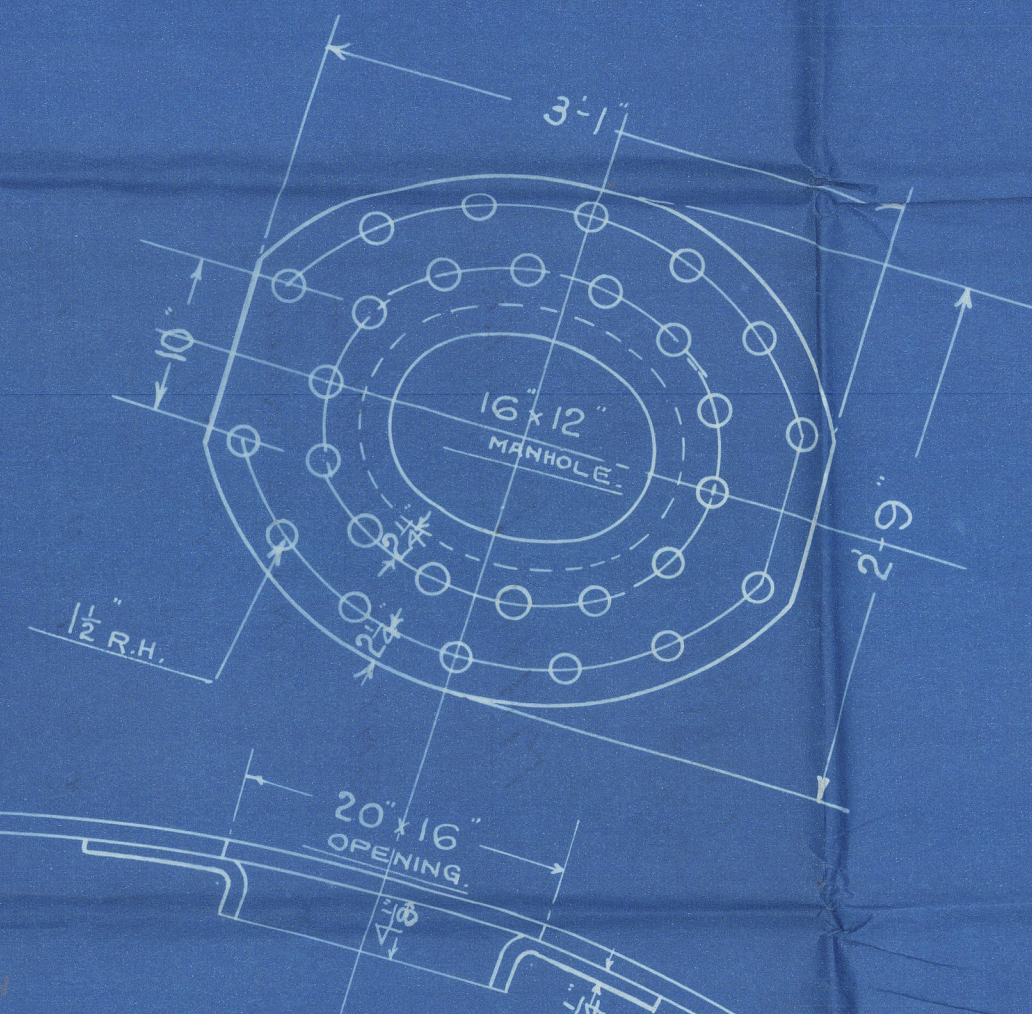
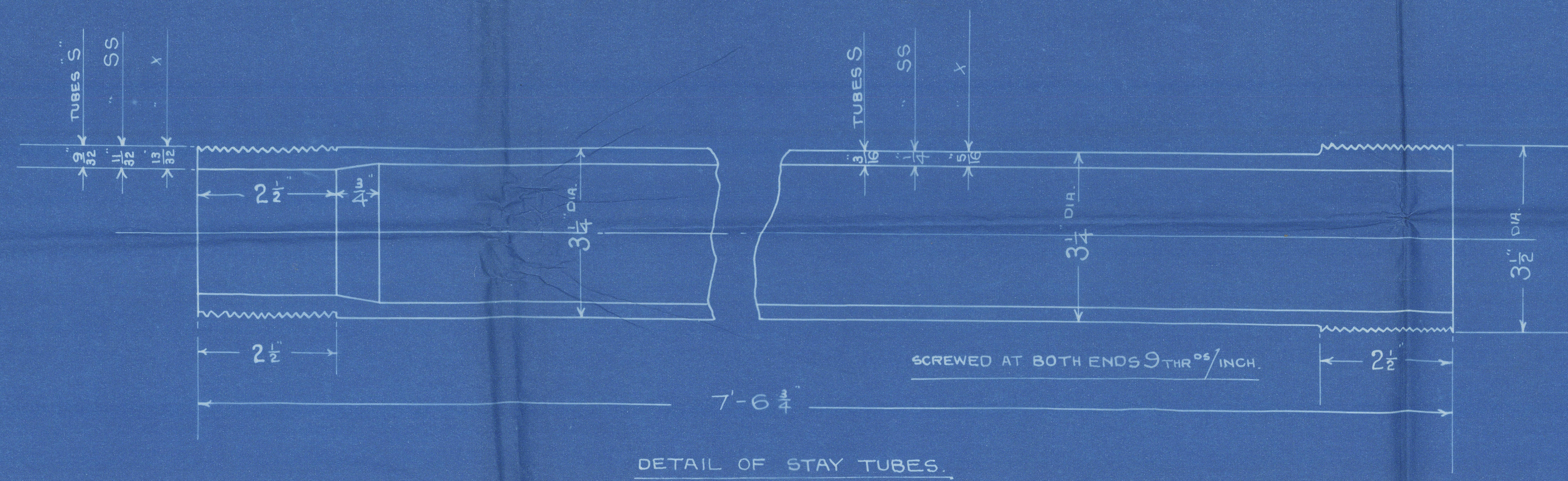


LIMIT OF TENSILES

SHELLS & BUTT STRAPS	28-32 TONS	SIEMENS MARTIN STEEL
GIRDER PLATES	28-32 "	" " "
ALL OTHER PLATES	26-30 "	" " "
LONGITUDINAL STAYS	28-32 "	" " "
SCREWED STAYS	26-30 "	" " "
RIVET BARS	26-30 "	" " "
TUBES	—	WROUGHT IRON

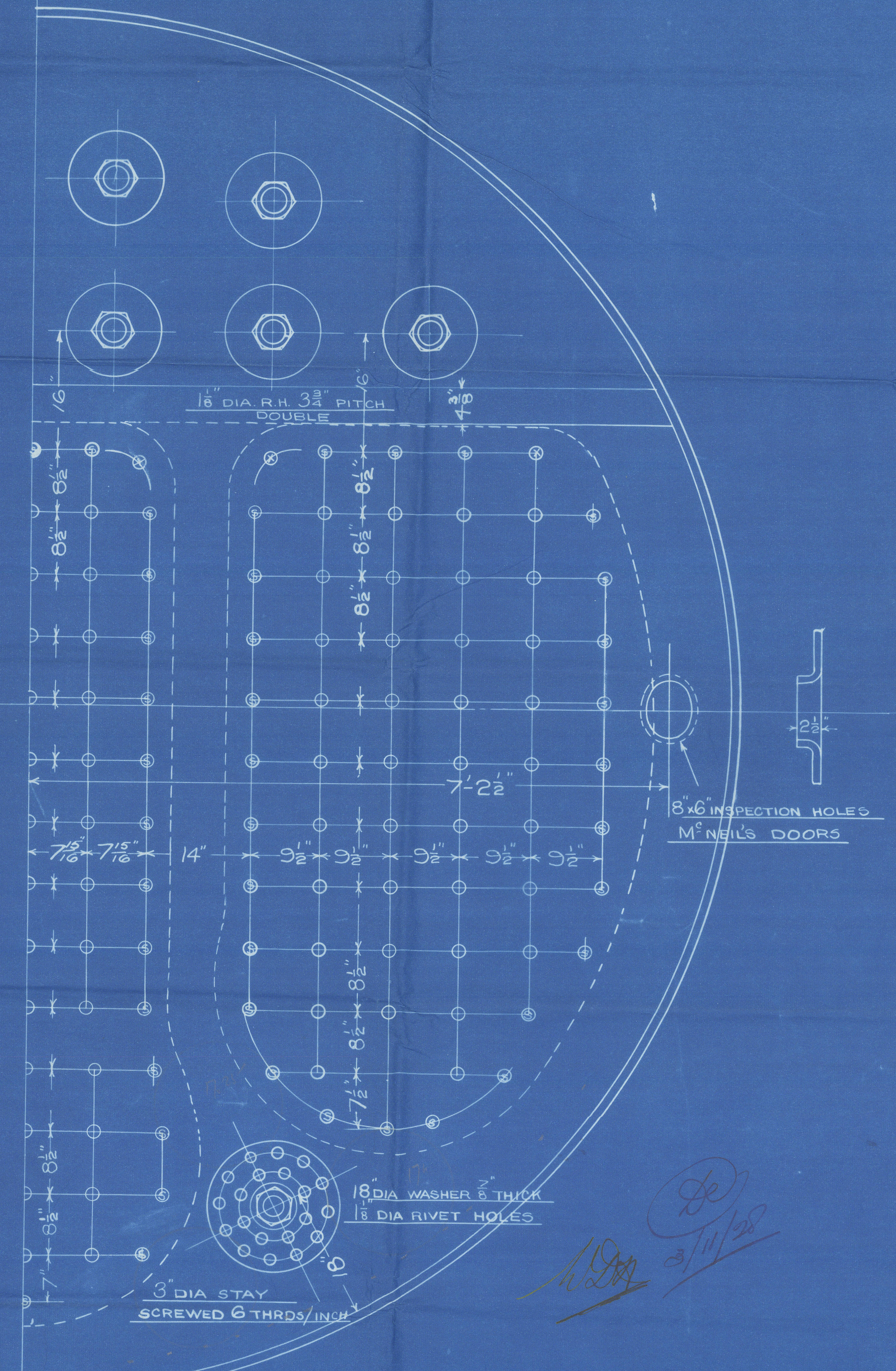
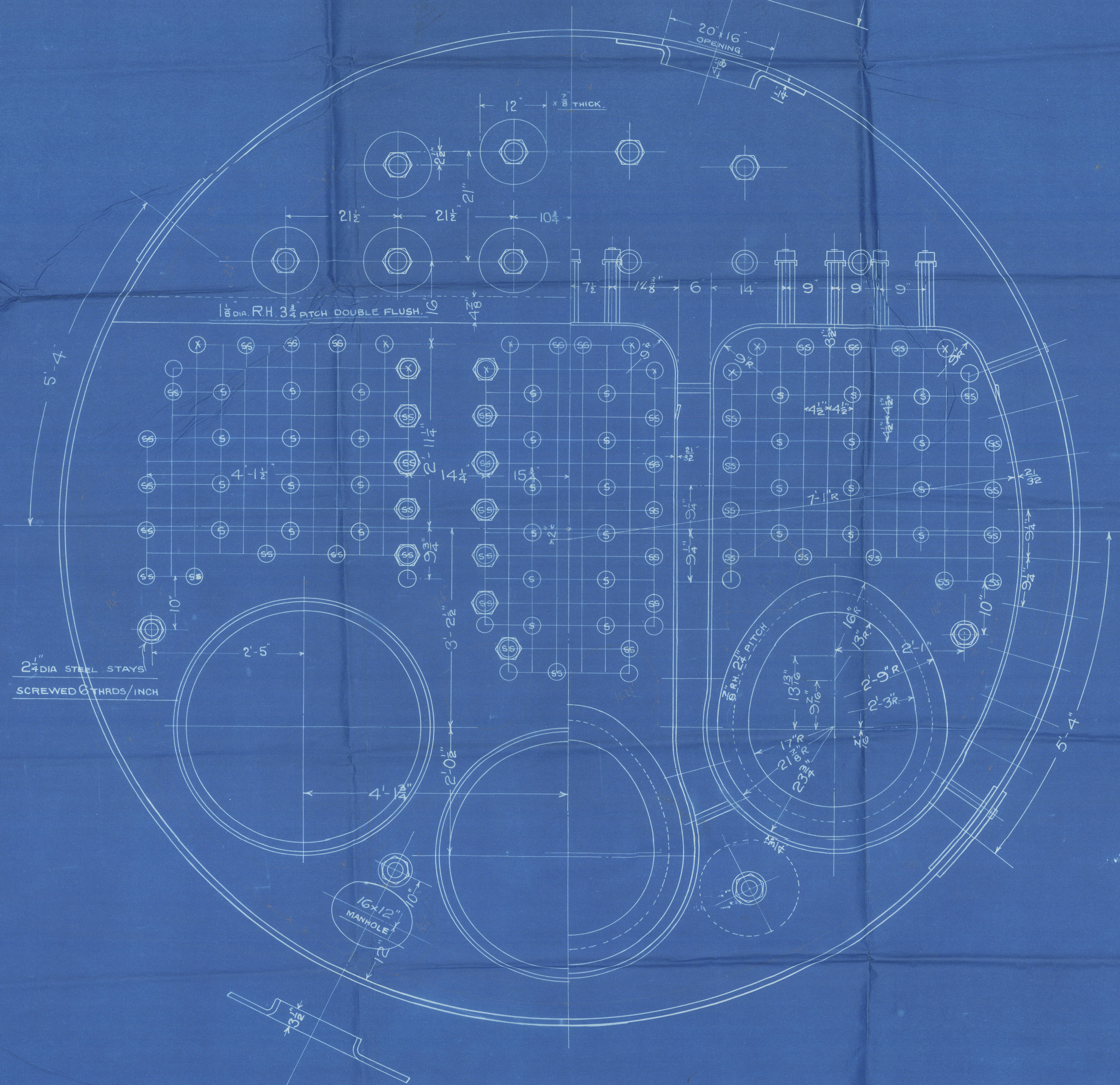
BOILER PARTICULARS

	1 BOILER	3 BOILERS
HEATING SURFACE OF TUBES	2180 #	6540 #
" " " FURNACES	150 "	450 "
" " " COMB. CHAMBS	260 "	780 "
" " " BACK TUBE PLATE	54 "	162 "
" " " FRONT -	40 "	120 "
TOTAL	2684 "	8052 #
GRATE SURFACE (5'-0" BARS)	57.5 #	172.5 #
RATIO $\frac{H}{G}$	46.6	
AREA THRO' TUBES		

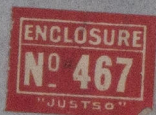


MARK	DIA	THREAD	EFF AREA
○	1 5/8	9	1.73 sq
⊗	1 7/8	9	2.36 sq
⊗	2 1/8	9	3.09 sq

ALL SCREWED STAYS TO BE NUTTED AT BOTH ENDS EXCEPT AT SHELL



s/s "Harby"



MAIN BOILERS

CENTRAL MARINE

ENGINE WORKS

No 1016

WM. GRAY & CO. LD.

S.S. No 1016.

N103755
Lloyds Test
320 lb
WP 180 lb
8.3.24 RDS

W. H. L. R. 26223



Lloyd's Register
Foundation

W1984-0237