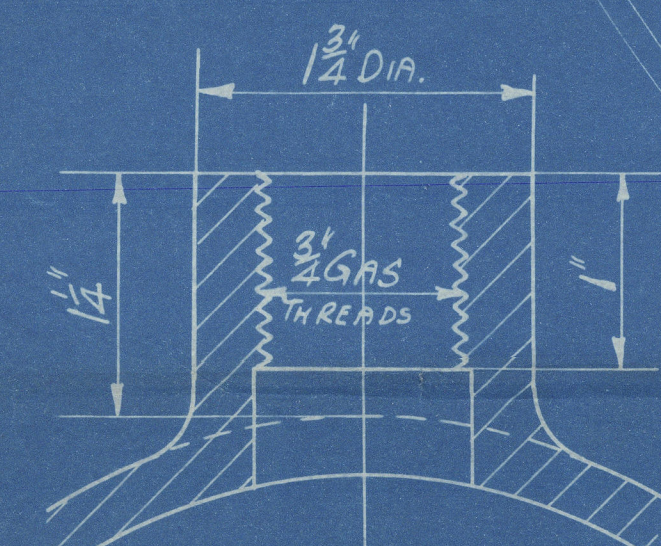
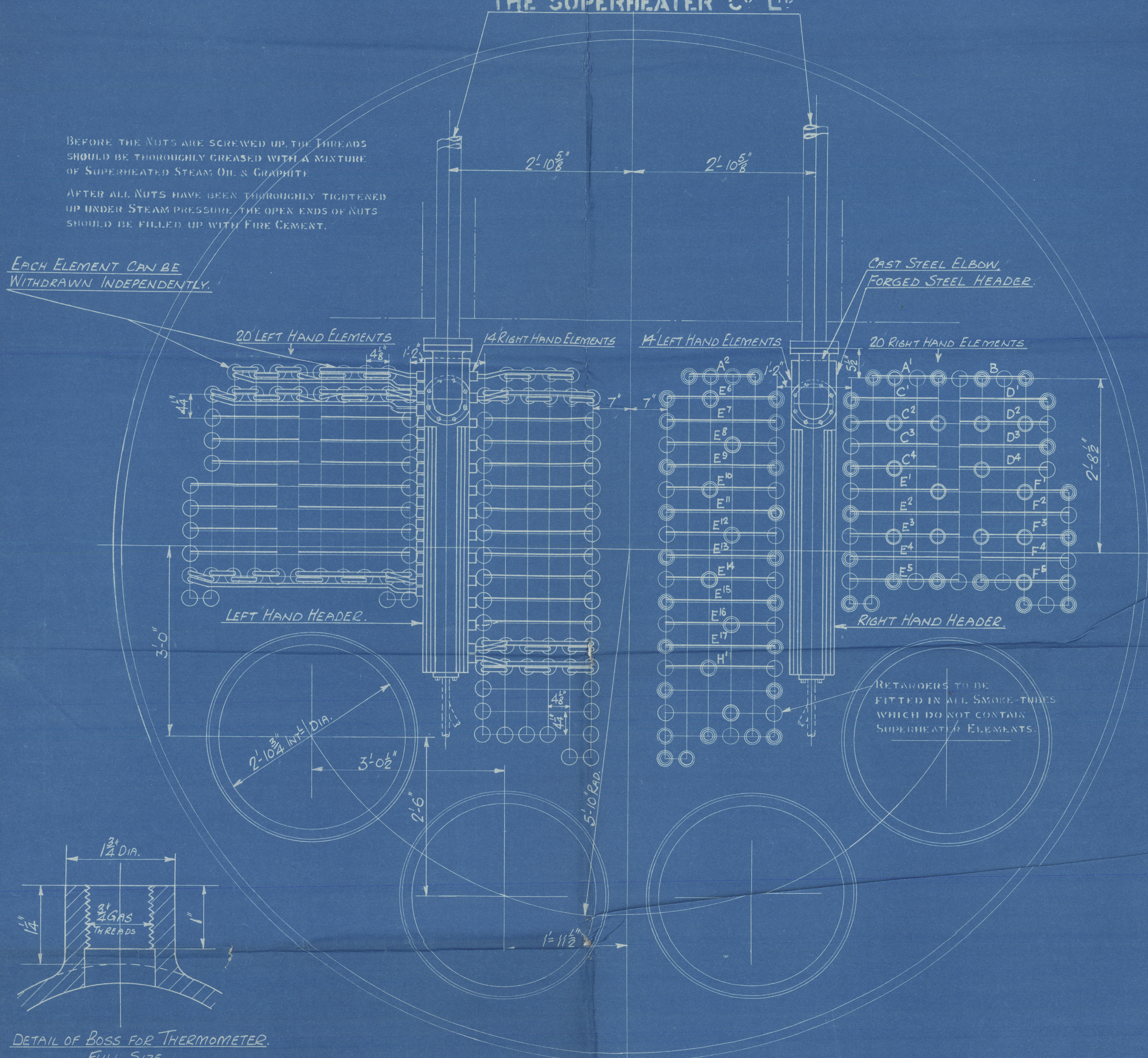


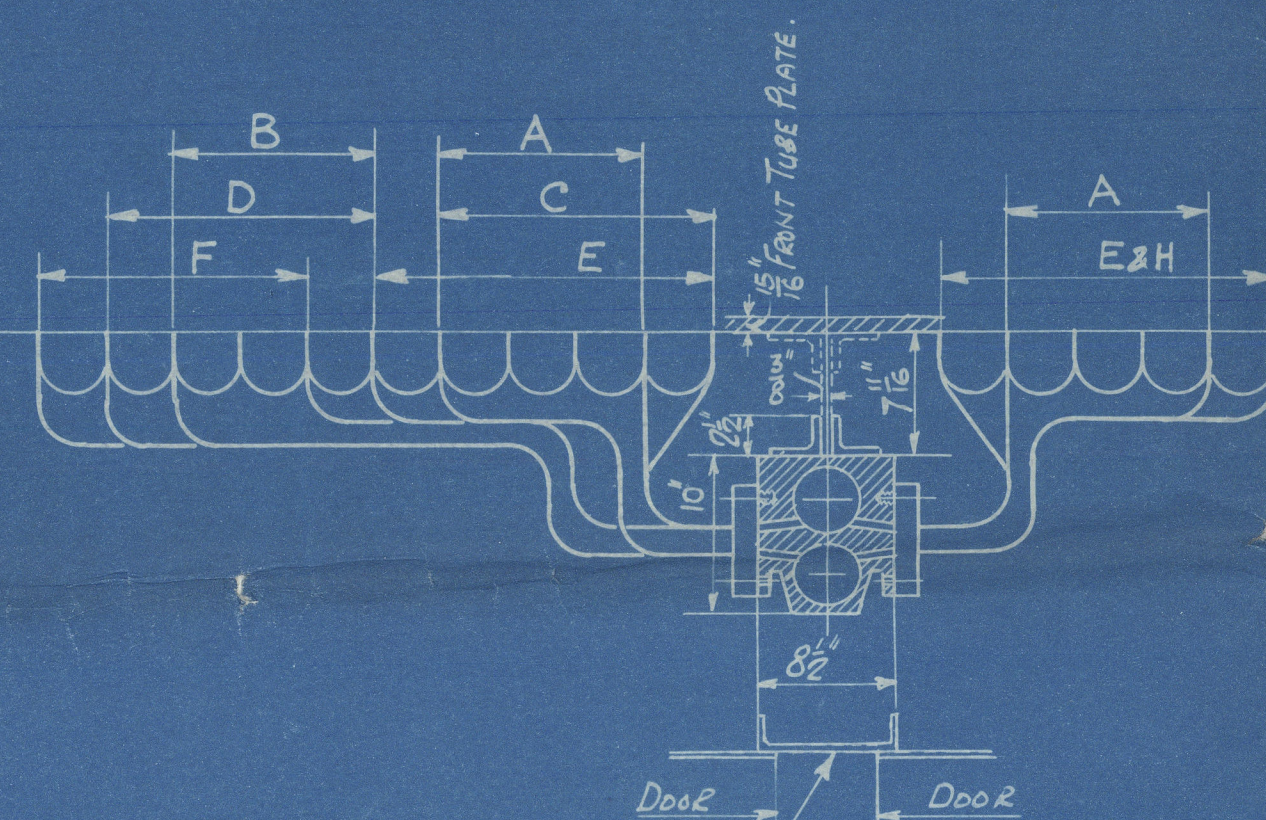
4" IN. DIA. STEAM PIPES
NOT SUPPLIED BY
THE SUPERHEATER CO. LTD.

BEFORE THE NUTS ARE SCREWED UP, THE THREADS SHOULD BE THOROUGHLY GREASED WITH A MIXTURE OF SUPERHEATED STEAM OIL & GRAPHITE.
AFTER ALL NUTS HAVE BEEN THOROUGHLY TIGHTENED UP UNDER STEAM PRESSURE, THE OPEN ENDS OF NUTS SHOULD BE FILLED UP WITH FIRE CEMENT.

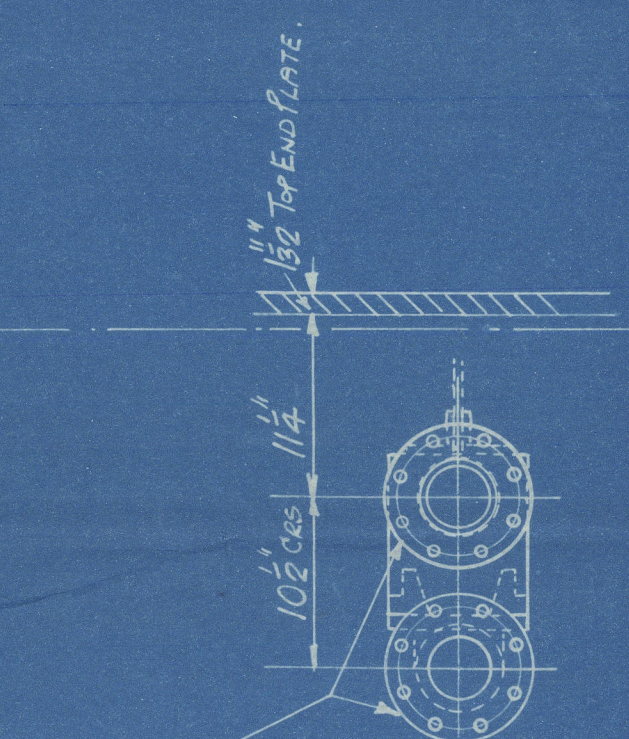
EACH ELEMENT CAN BE WITHDRAWN INDEPENDENTLY.



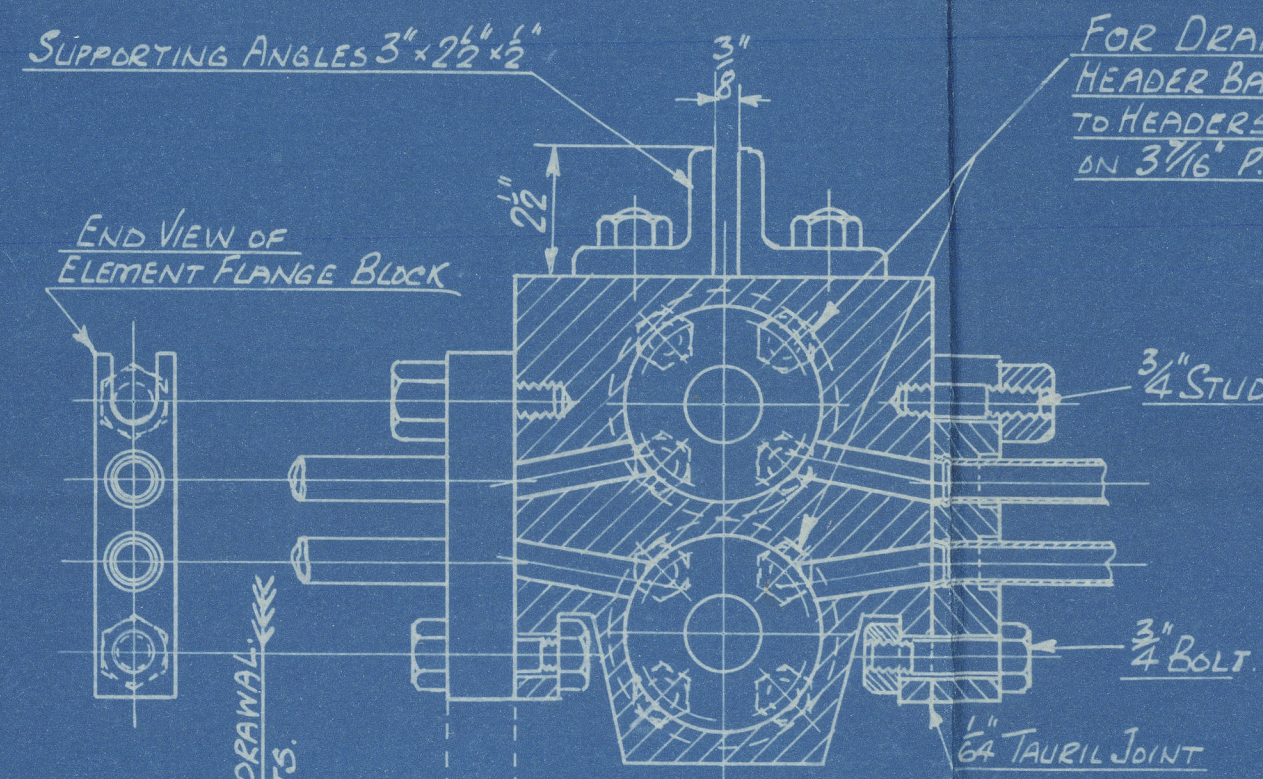
DETAIL OF BOSS FOR THERMOMETER.
FULL SIZE.



STILE PLATE NOT TO EXCEED WIDTH OF HEADER.

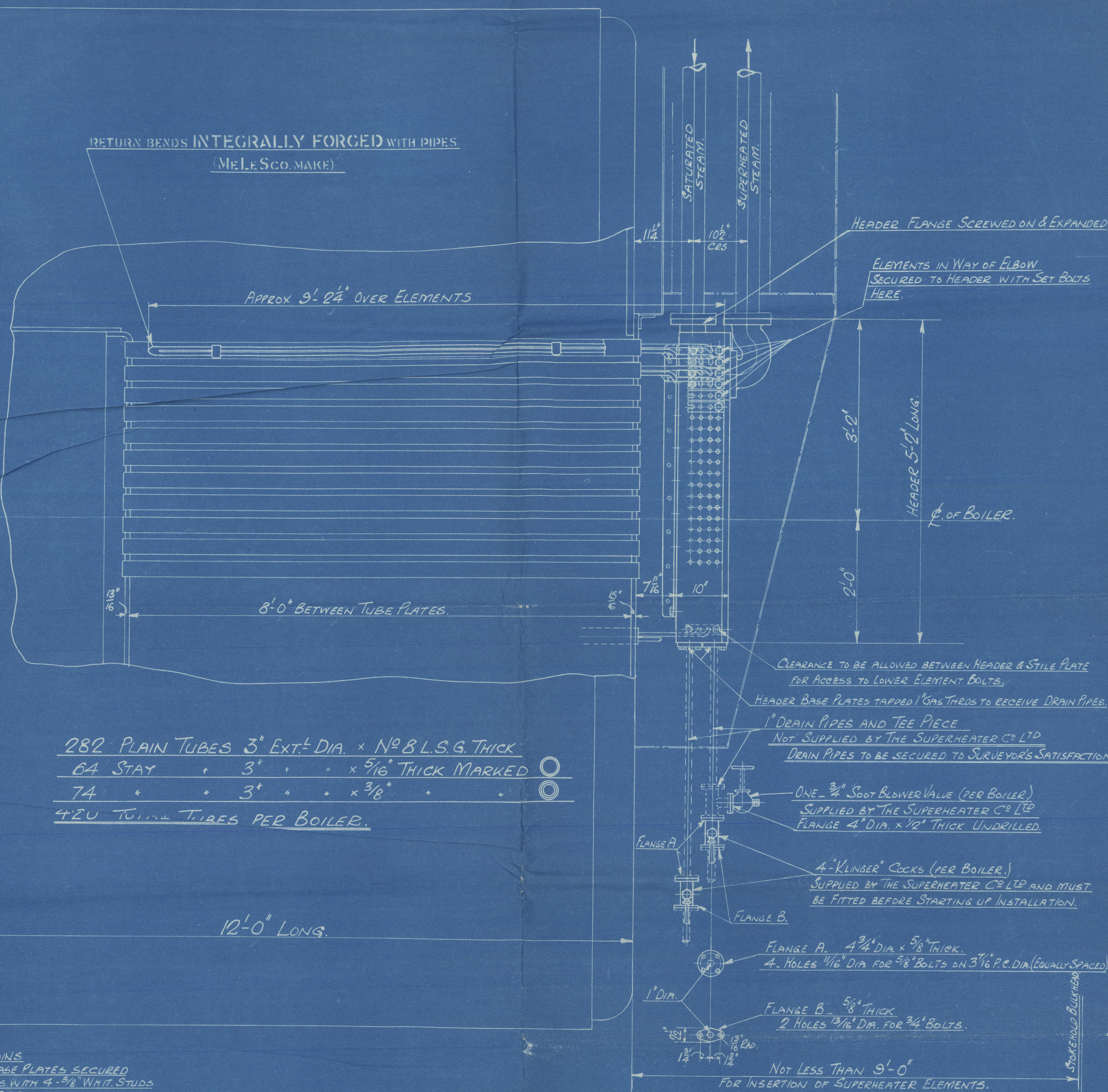


9" DIA. FLANGES & 1 1/4" THICK
8-1 3/16" DIA. HOLES FOR 3/4" BOLTS
ON 7 1/2" P.C. DIA.



SECTION THRO' HEADER (BELOW ELBOW)
SHOWING ATTACHMENT OF SUPERHEATER ELEMENTS.
SCALE: 3" = ONE FOOT.

16'-3" EXT. DIA.



282 PLAIN TUBES 3" EXT. DIA. x N° 8 L.S.G. THICK
64 STAY . 3" . . . x 5/16" THICK MARKED
74 . . . 3" . . . x 3/8" . . .
420 TURN TUBES PER BOILER.

MAIN			
NUMBER OF BOILERS	3 PER SHIP	(FORCED DRAUGHT - COAL OR OIL FIRED)	
WORKING PRESSURE	= 220 LBS PER SQ. IN.	PER BOILER	PER SHIP
GRATE AREA	= 63.33 sq. ft.		190 sq. ft.
HEATING SURFACE	= 3202 sq. ft.		9606 sq. ft.

TO PASS LLOYD'S SURVEY
TEST PRESSURE 660 LBS PER SQ. IN.

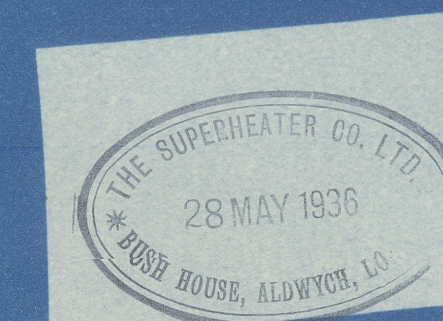
THE DESIGN SHOWN ON THIS DRAWING IS PROTECTED BY PATENTS OWNED AND CONTROLLED BY
THE SUPERHEATER CO. LTD.
BUSH HOUSE LONDON W.C.2

TITLE ARRANGEMENT OF SUPERHEATER
R.B. TYPE.

REF. CKD. DRAWING NO.
10478 11/15 MN 10590

JOHN READHEAD & SONS LTD

ENGINE N°s 507 & 508



SCALE
1" = 1 FOOT
DWG. TO
27/1/35

MESSRS J. READHEAD & SON'S

YARD NOS 507 & 508

ARRANGEMENT of
SUPERHEATERS

MAIN BOILERS

S/S. Daltistan
NEWCASTLE ON TYNE.

Report No. 95095.

W 997-0048

95095



© 2020

Lloyd's Register
Foundation