

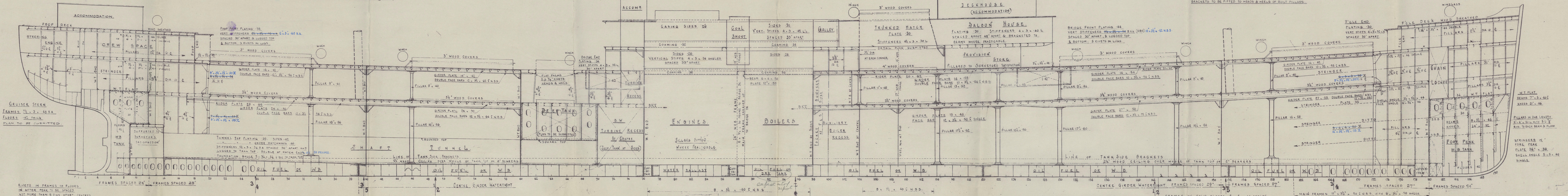
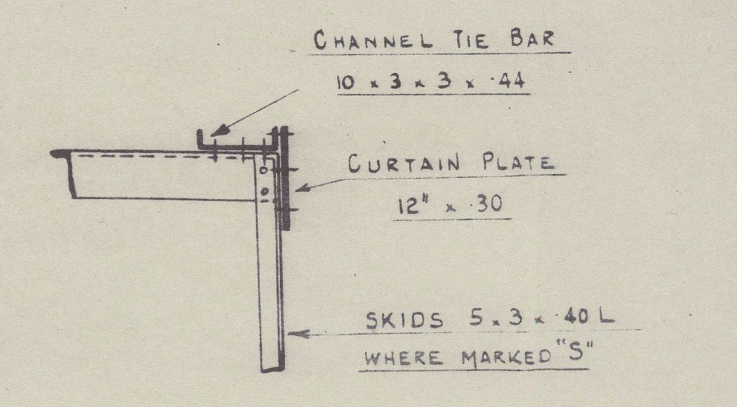
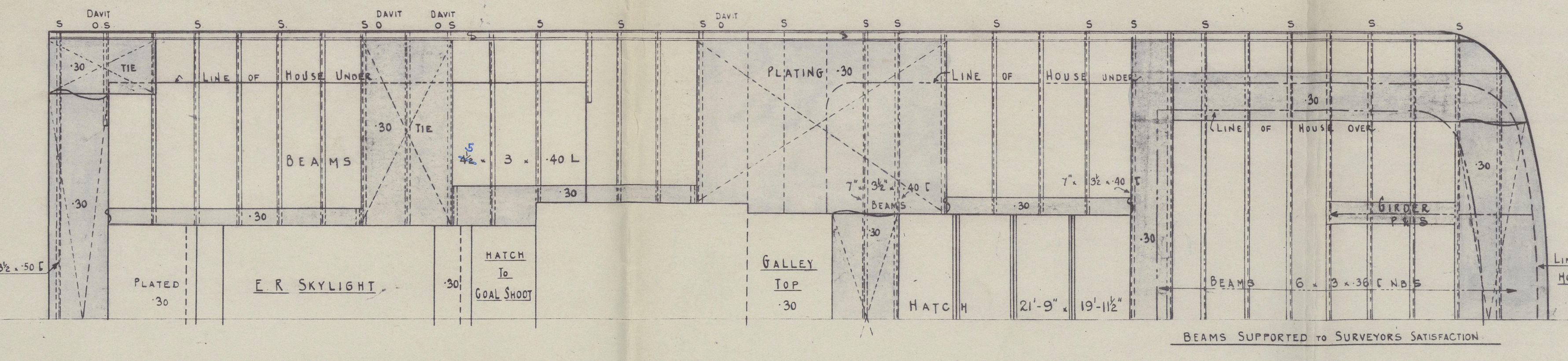
No 507-8.
PROFILE & DECKS PLAN.
DIMENSIONS AS PER RULE.

LENGTH B.P. 450'-00"
BREADTH MLD. 58'-29"
DEPTH MLD. 32'-08"

CLASS 100 A.I. + FULL SCANTLING VESSEL
SCALE 1/8" = 1 FOOT.
SPEED = 14 KNOTS (SERVICE)

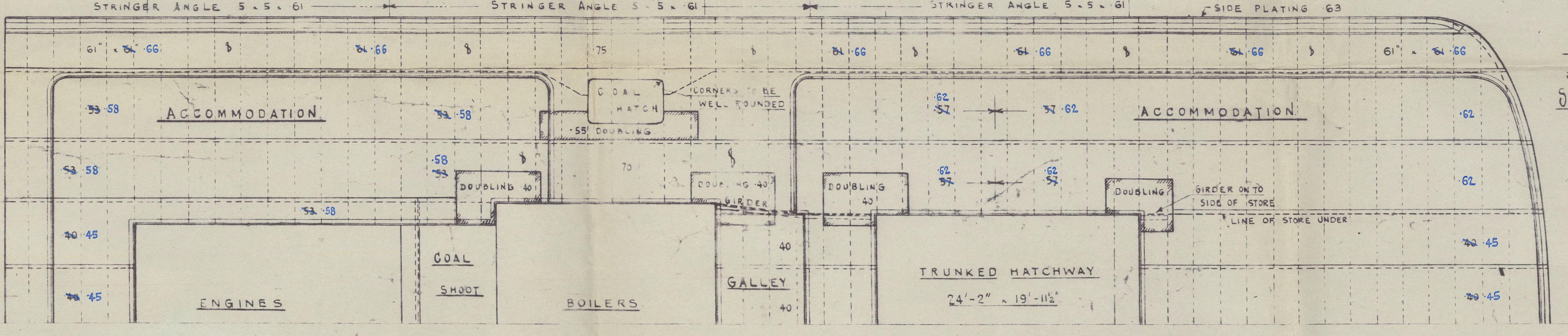
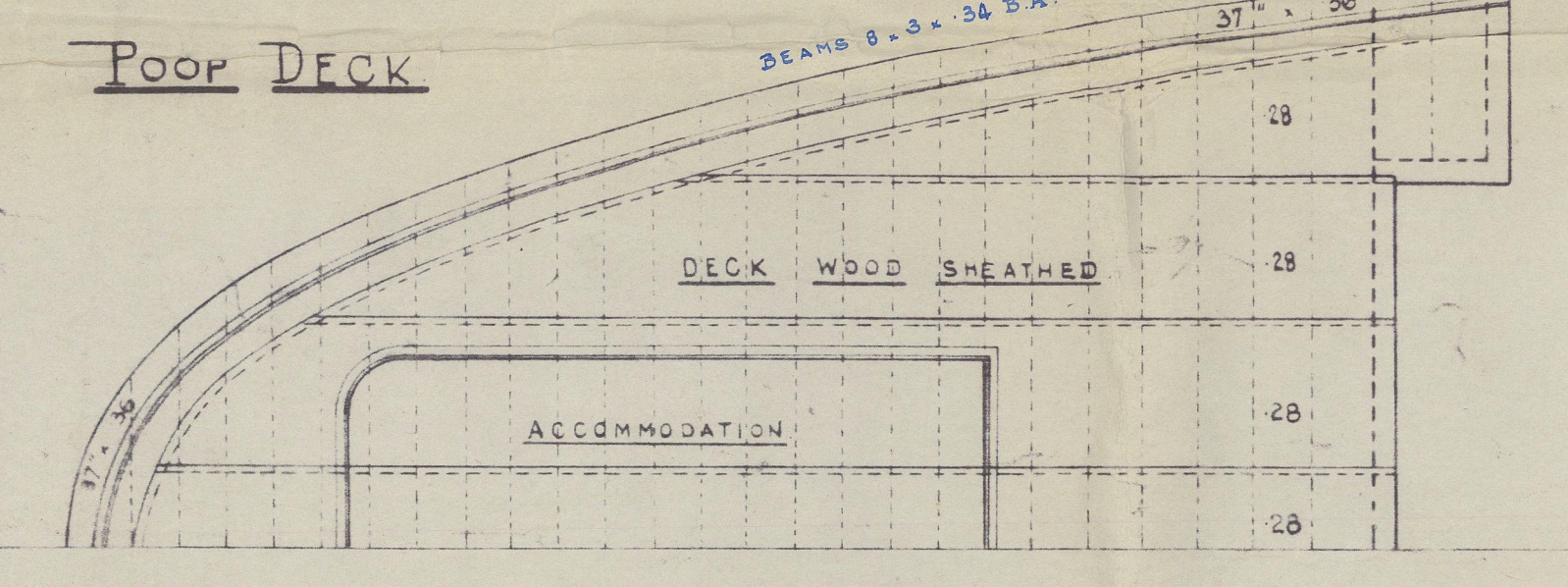
PROMENADE DECK.
OF 5" x 3" TEAK.
& 5" x 3" PINE.

SCANTLING, AS BUILT,
TO BLUE.



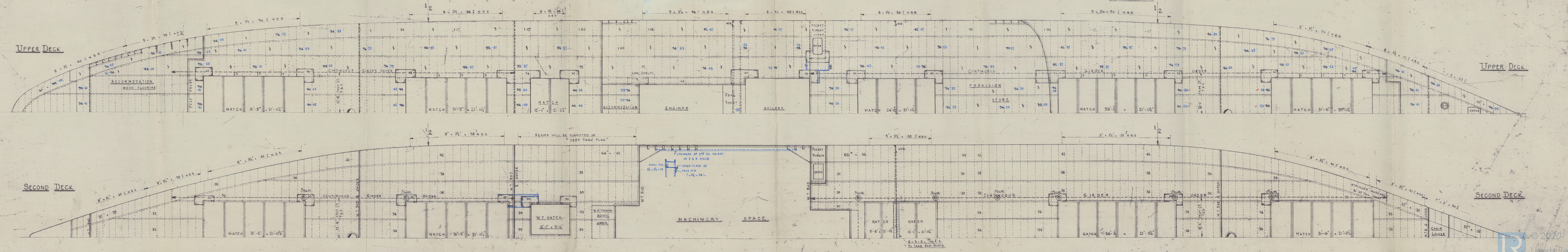
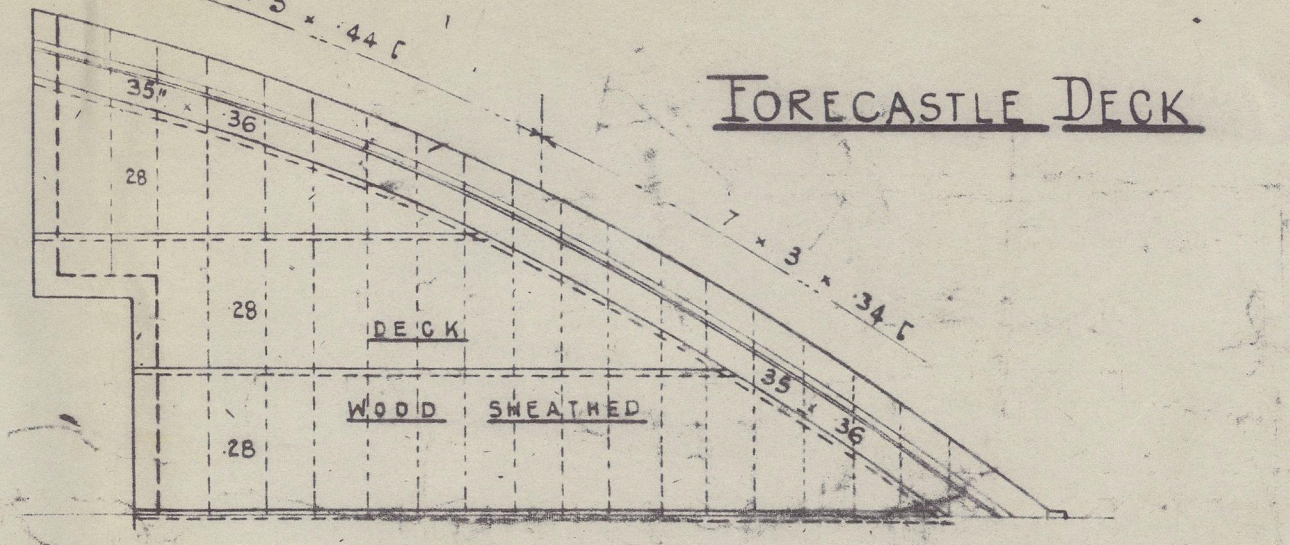
PARTICULARS FOR FREEBOARD

80% OF LENGTH INCLUDING CRUISER STERN	588' 28"
LENGTH BETWEEN PERPENDICULARS	450' 00"
BREADTH MOULDED	58' 29"
DEPTH MOULDED TO UPPER DECK	32' 08"
80% OF DEPTH MOULDED	27' 27"
MOULDED DISPLACEMENT AT 80% DEPTH MLD	15,200 T
CURVE OF FINENESS	
APPROX. TIME PER INCH = 71.5	
FOUND OF BEAM NO. 14	
SCANTLING CLASS 100 A.I. + FULL SCANTLING VESSEL	
SHEER, AFT SIDE OF UPPER DECK	5' 3"
PERPENDICULAR	10' 6"
LENGTH OF POOP & 37' 3" IN CENTRE	82' 1" 3" SHEER
BRIDGE	140' 2" 0" CENTRE
POOP	35' 1" 0" CENTRE



BRIDGE DECK
SHEATHED WITH 3" x 3" PINE.

JOHN READHEAD & SONS LTD
SHIPBUILDERS, ENGINEERS & C.
SOUTH SHIELDS.



JOHN READHEAD & SONS. L^D NO 507.

S. S. "ARMANISTAN"

PROFILE Y DECKS (AS BUILT)

NEWCASTLE ON TYNE.

Report No. 94668

RETAIN

S/S. BALTISTAN

NEWCASTLE ON TYNE.

Report No. 95095

RETAIN



© 2020

Lloyd's Register
Foundation