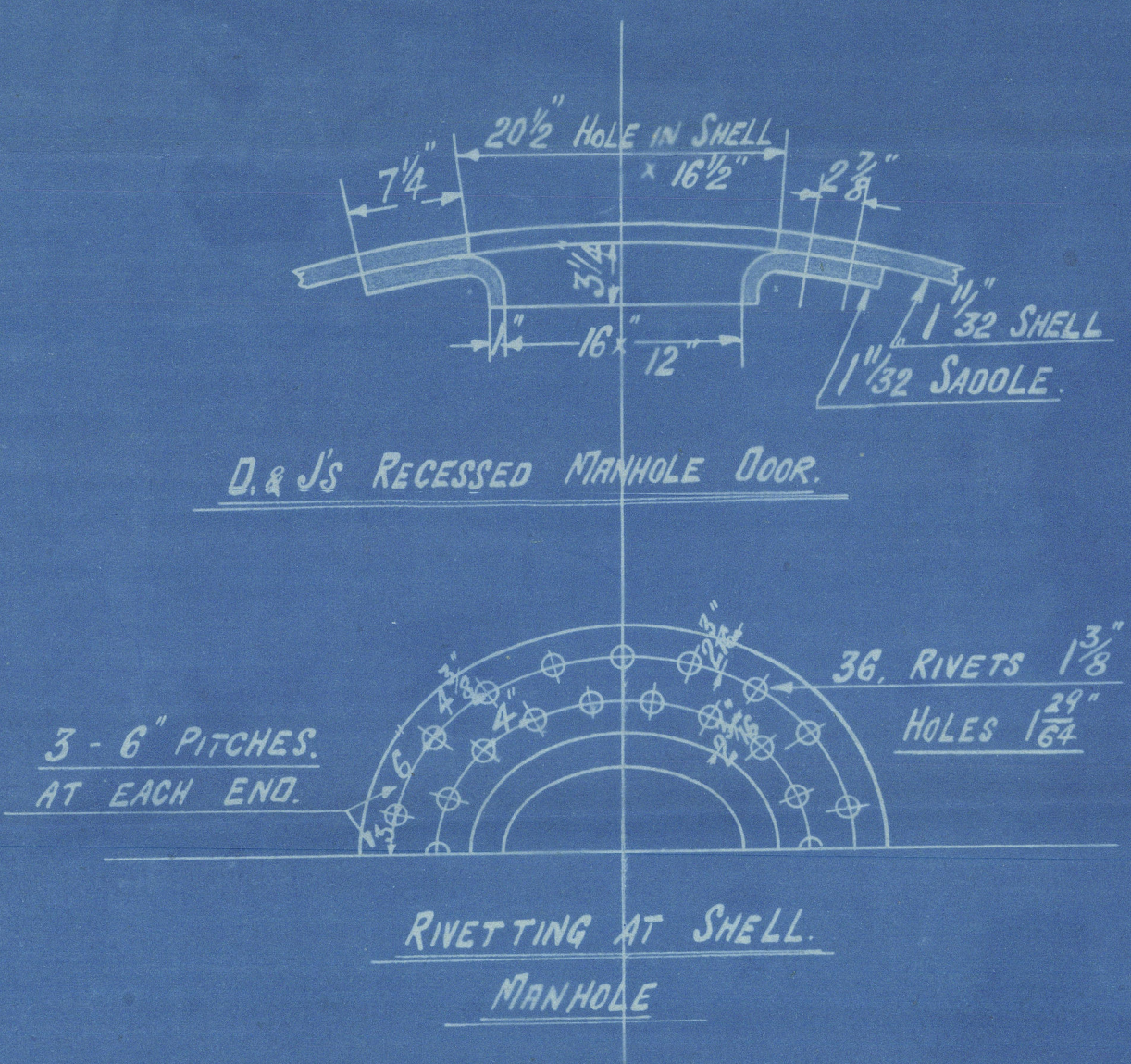
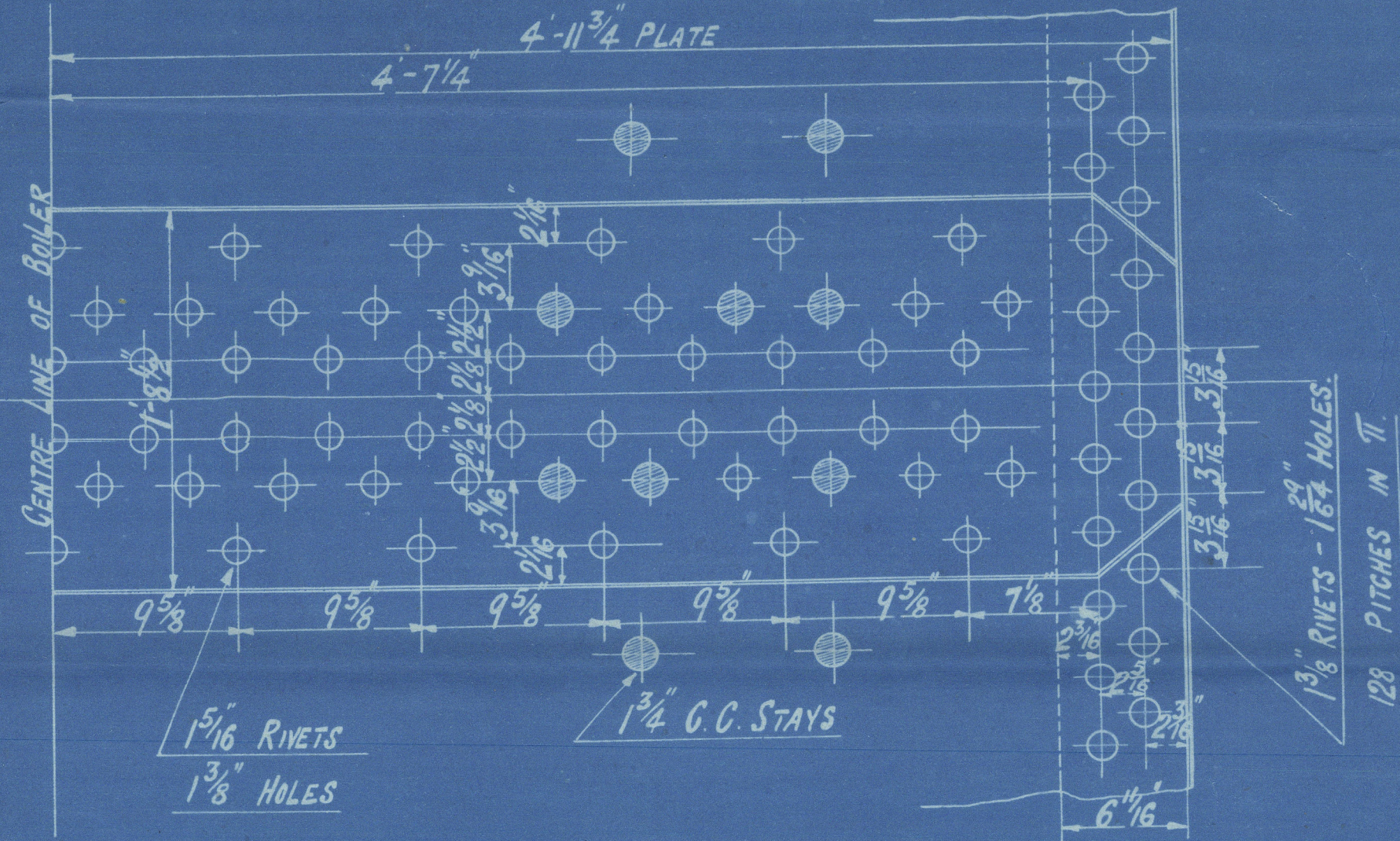


Nº 11,968.

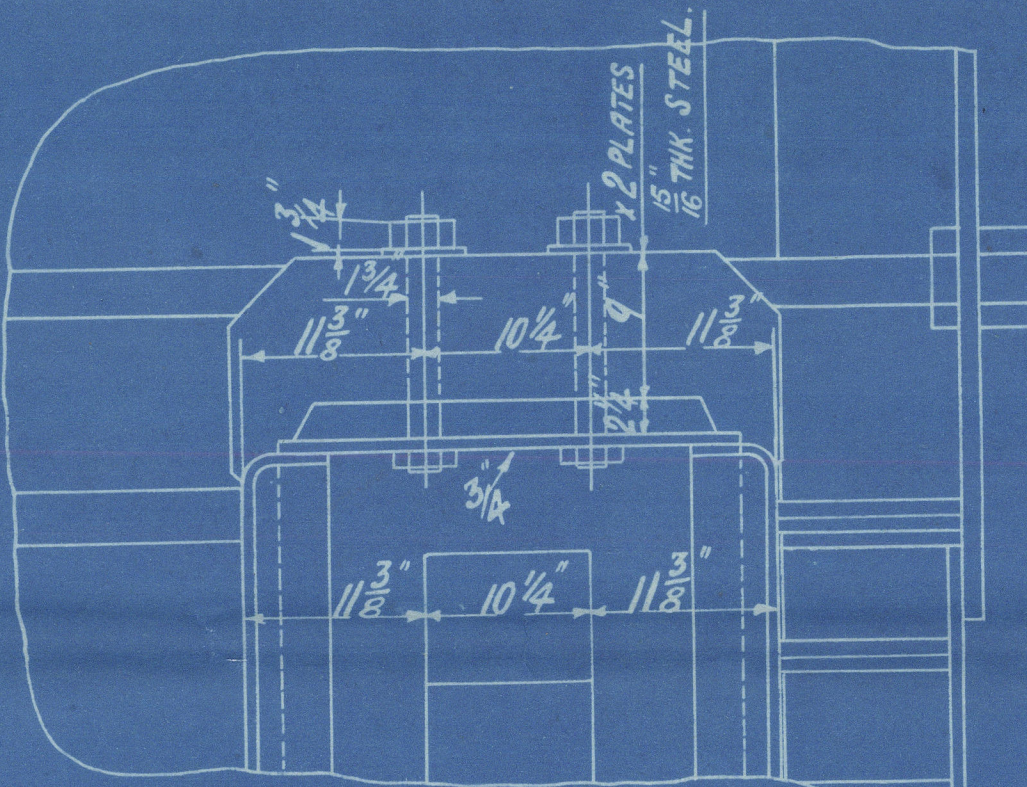
17/1/19



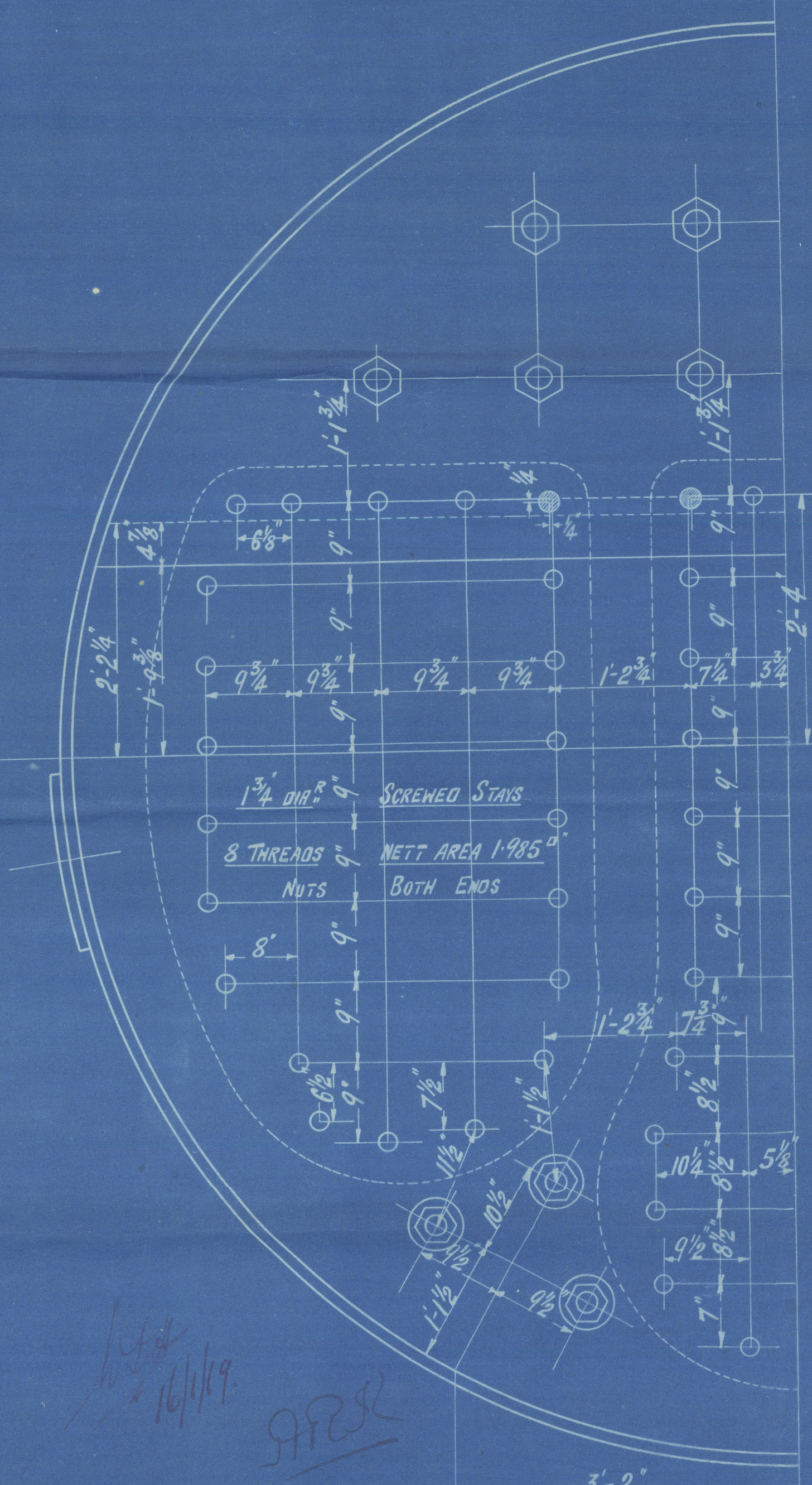
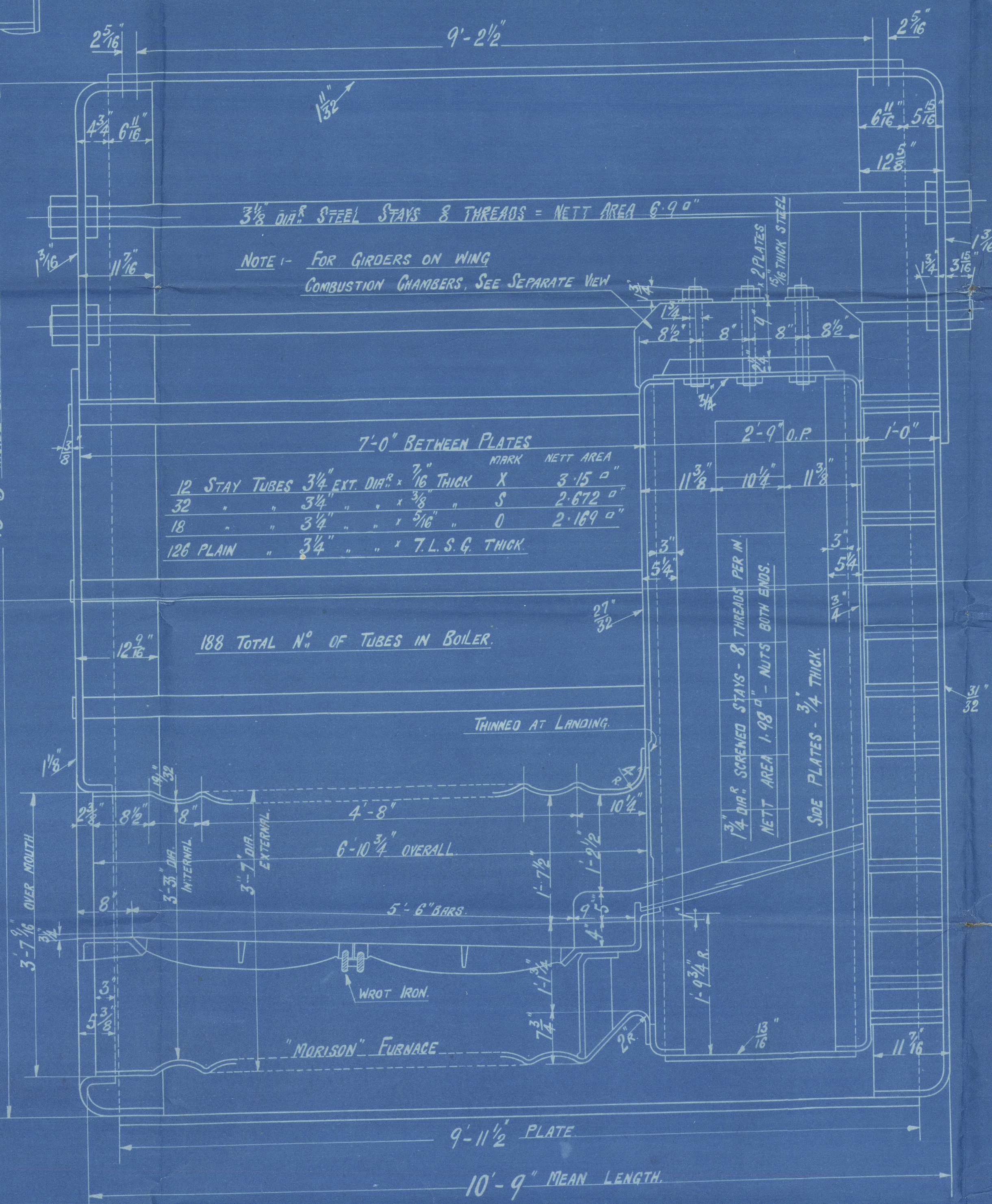
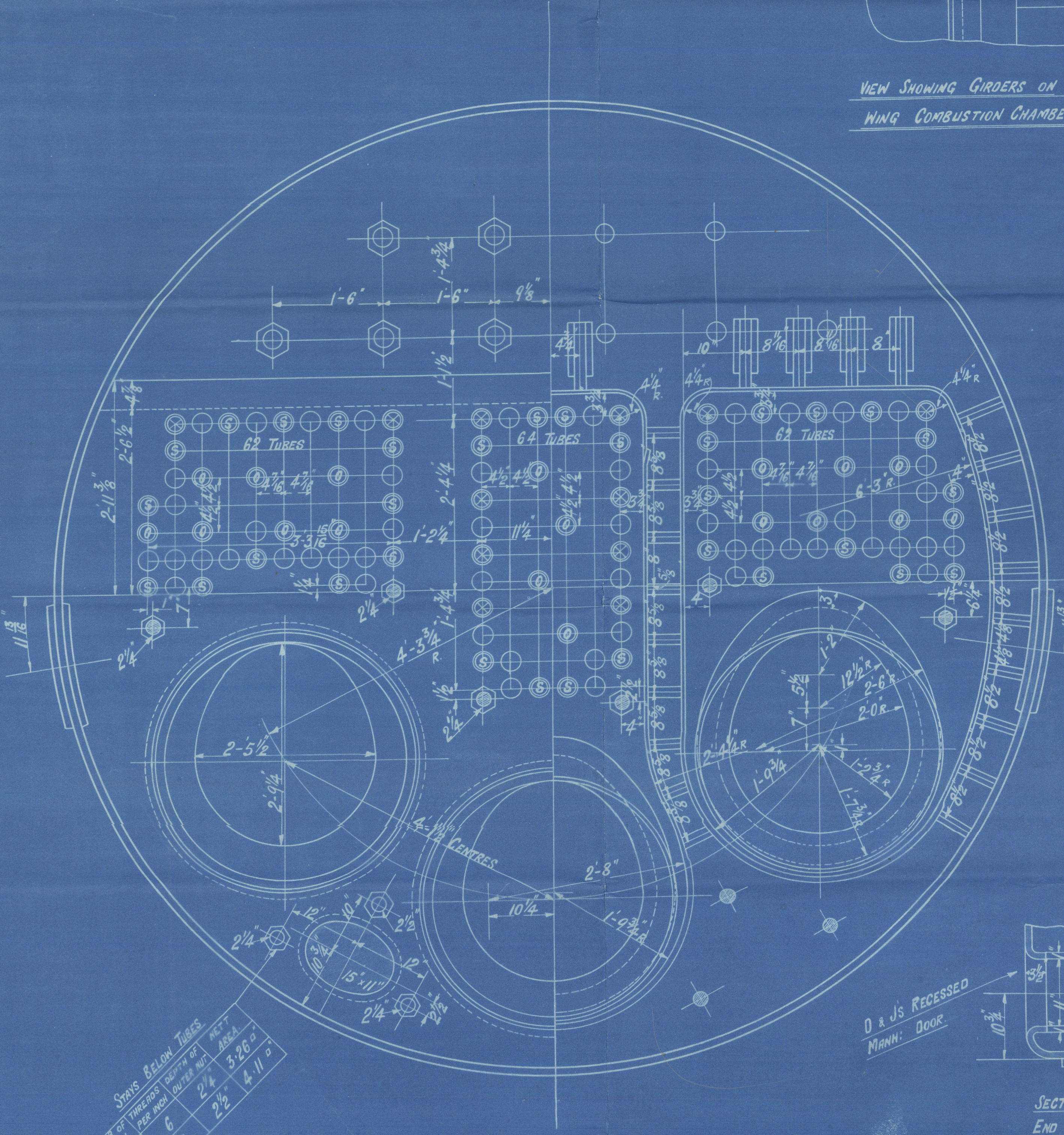
PARTICULARS	
HEATING SURFACE IN 188 TUBES	1119 #
" " 3 COMB. CHAMBERS	228 #
" " 3 FURNACES	141 "
" " TOTAL	1488 "
GRATE SURFACE (5'-6" BARS)	53 3/8 "
AREA THRO' TUBES	7.9 "
RATIO HEATING SURFACE GRATE SURFACE	27.7
" GRATE SURFACE AREA THRO' TUBES	6.8
STEAM SPACE CUB. FEET	299.



RIVETING ETC.	
LONGITUDINAL SEAMS (TREBLE RIVETTED DOUBLE BUTT STRAPS).	
SHELL 1 1/32" RIVETS 1 3/8" HOLES 1 3/8" PITCH 9 3/8" PLATE 85.6 %	SHELL PLATES
RIVETS 88.3 % BUTT STRAPS 1 3/8" THICK.	AND BUTT STRAPS TO HAVE A TENSILE STRENGTH OF 28 TO 32 TONS PER SQUARE INCH.
CIRCUMFERENTIAL SEAMS (DOUBLE RIVETTED LAP).	
RIVETS 1 3/8" HOLES 1 3/8" PITCH 3 1/8" PLATE 83.5 % RIVETS 50.3 %	ALL HOLES DRILLED IN PLACE. BOILER STEEL - TUBES IRON.
UNDER BOARD OF TRADE & LLOYD'S SURVEY FOR A WORKING PRESSURE OF 200 LBS. PER SQ. IN.	



VIEW SHOWING GIRDERS ON WING COMBUSTION CHAMBERS ONLY.



ONE S. E. BOILER FOR Nº 483.

SCALE: 1" = 1 FOOT.

483.

DUNSMUIR & JACKSON.

I.S.E. BOILER. N^o 483.

200 LBS.

N^o 15368

LLOYDS TEST

350 LBS

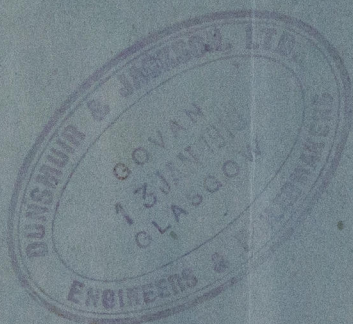
W.P. 200 LBS

1-7-20

J.E.S.

St. Francis

GLASGOW REPORT No. 140686



© 2020

Lloyd's Register
Foundation