

7.6.70

5/8/82

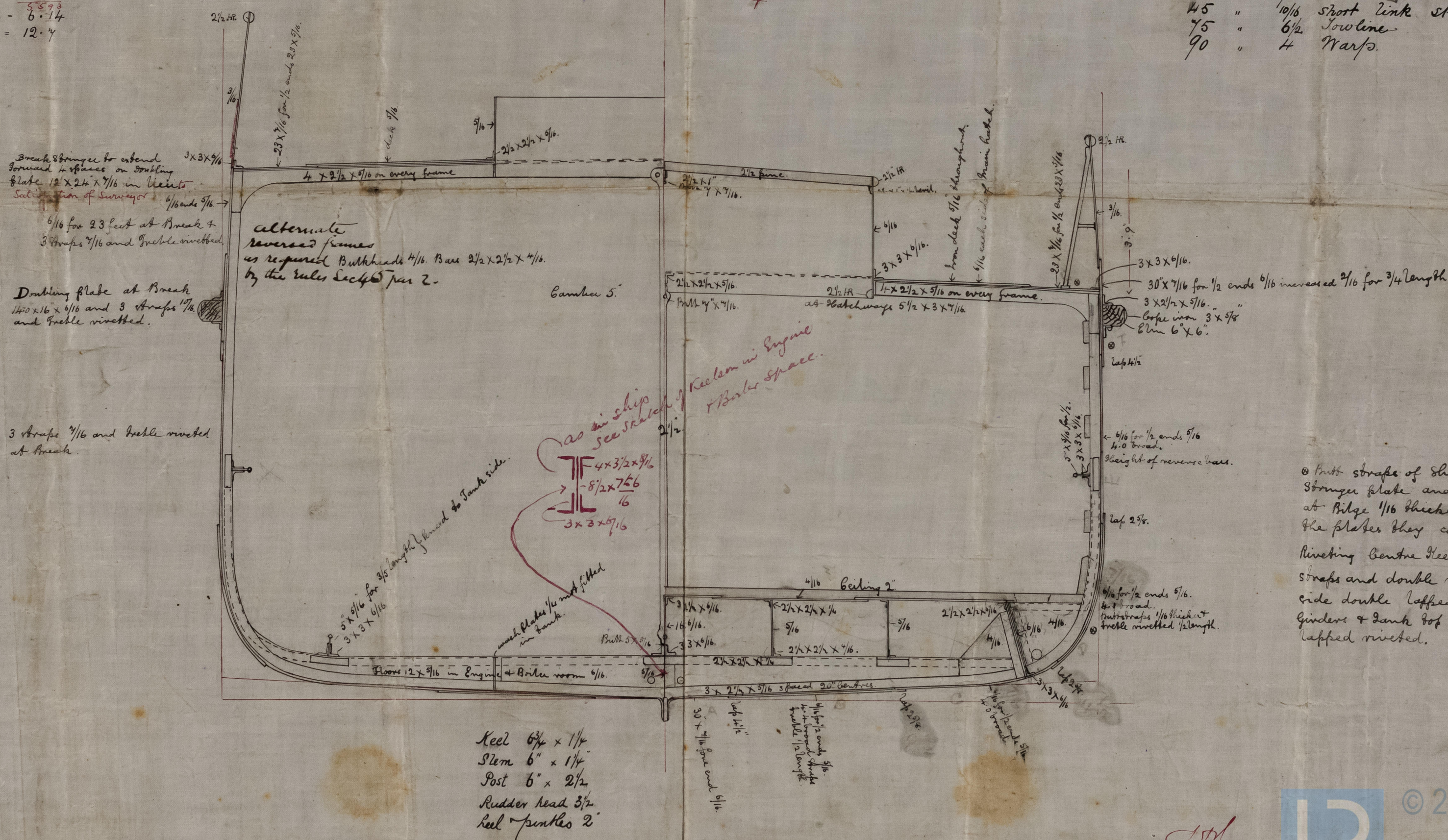
Scale $\frac{1}{2}'' = \text{one foot.}$

Length moulded 129' 0".
Breadth " 21' 0"
Depth of hold 9' 2".

$\frac{1}{2}B = 10.6$
 $D = 10.2$
 $\frac{1}{2}g = \frac{18.9}{39.5 \times 129 = 5085}$
 Breadth to length = 6.14
 Depth to length = 12.4

Equipment No 5098 + $\frac{1}{10}$ = 6607

2 Bowers	on	stock	$5\frac{3}{4}$	Cut	each
1 Stream)	—	—	$1\frac{1}{2}$	—	—
1 Kedge	—	—	$3\frac{1}{4}$	—	—
165 Fms	14/16	stick		Chain	Cable
45 "	10/16	shoot		link	stream chain
75 "	6/2			lowline	
90 "	4			Warps	



8 Butt straps of Shearbrake
Stringer plate and 1 Brake
at Ridge $1/16$ thicker than
the plates they connect.
Riveting Centre Nelson double
straps and double riveted. Tank
side double lapped riveted.
Girders & Tank top single
lapped riveted.

26/6/82

UNN1036-0141

Is Holme Wood (ex Scale Force)
Barrow Fz. Rpt. p. 3636. *W.H.*

Now

Holme Wood



1410-936-014



© 2021

Lloyd's Register
Foundation